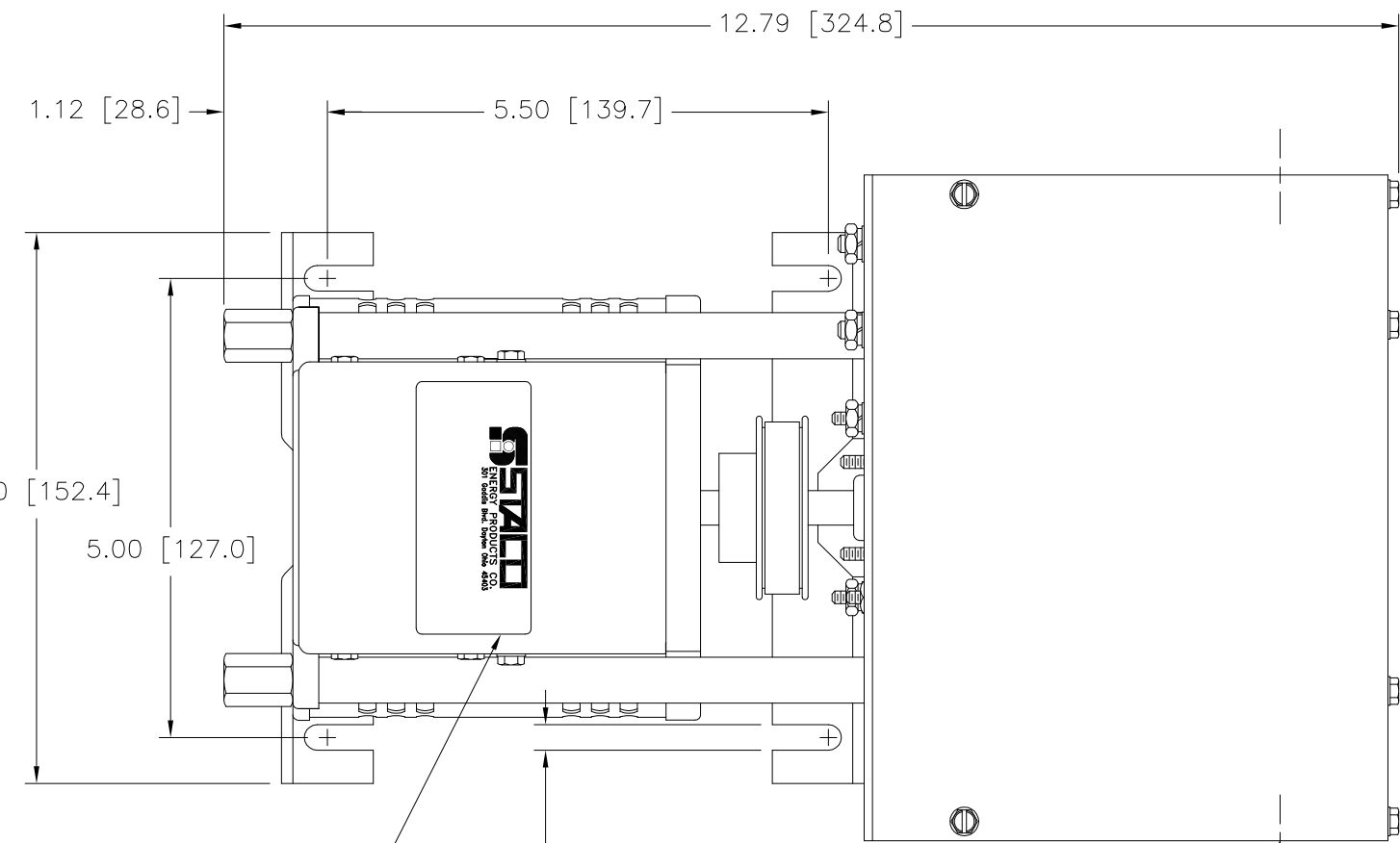


(4) STANDOFFS TAPPED
 1/4-28 X .38 [9.5] DEEP
 FOR MOUNTING BOLTS
 .88 [22.2] DIA. KNOCKOUT
 (2) PLACES FOR
 WIRING CONNECTIONS



NAMEPLATE
 .28 [7.1]
 (4) PLACES FOR
 CUSTOMER MOUNTING
 .88 [22.2] DIA. KNOCKOUT
 (4) PLACES FOR
 MOTOR CONNECTIONS

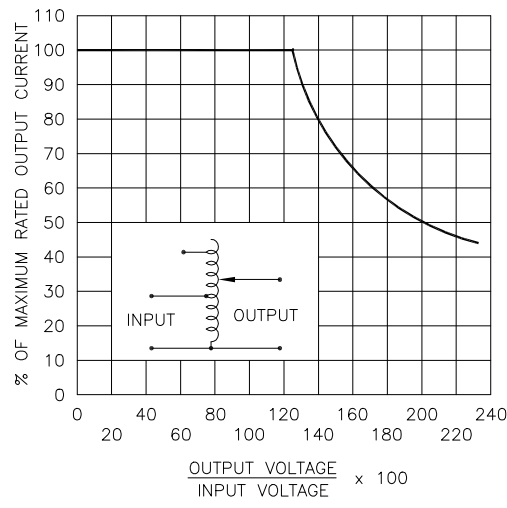
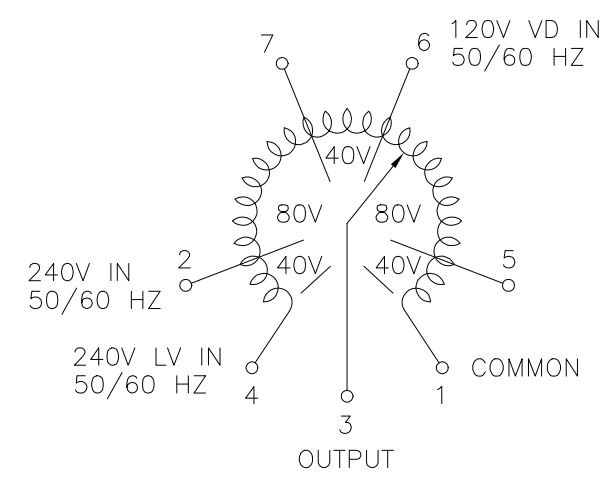


FIGURE A
 MAXIMUM OUTPUT CURRENT OF ANY
 DUAL INPUT VOLTAGE OR VOLTAGE DOUBLER
 UNIT OPERATED AT LOWER INPUT VOLTAGE.

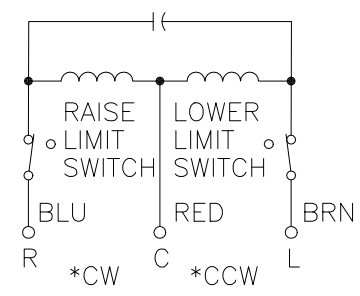
MAXIMUM OUTPUT CURRENT IN OUTPUT VOLTAGE RANGE FROM 0 TO 25% ABOVE LINE VOLTAGE. AT HIGHER OUTPUT VOLTAGES, THE OUTPUT CURRENT MUST BE REDUCED ACCORDING TO THE DERATING CURVE FIGURE A.

§ MAXIMUM KVA AT MAXIMUM OUTPUT VOLTAGE AND CORRESPONDING DERATED OUTPUT CURRENT. MAXIMUM KVA FOR LOWER VOLTAGES MAY BE CALCULATED FROM DERATING CURVE FIGURE A.

+ MOTOR DRIVEN UNITS USE TERMINAL CONNECTIONS FOR CCW INCREASING VOLTAGE, AS VIEWED FROM BASE END.



SCHMATIC
 VIEW FROM BASE END
 FUSE RECOMMENDED BUT NOT SUPPLIED



MOTOR CIRCUIT
 120V, 50/60 HZ
 * ROTATION AS VIEWED
 FROM MOTOR END
 MOTOR SPEED: SEE CHART

SPEED (SECONDS)	MODEL NUMBER
5	5M1020BCT
15	15M1020BCT
30	30M1020BCT
60	60M1020BCT

WIRING	INPUT		OUTPUT				SHAFT ROTATION TO INCREASE VOLTAGE	TERMINAL CONNECTIONS		
	VOLTS	HERTZ	CONSTANT CURRENT LOAD		CONSTANT IMPEDANCE LOAD			FOR INCREASING VOLTAGE AS VIEWED FROM BASE END +		
			MAX. AMPS	MAX. KVA	MAX. AMPS	MAX. KVA		INPUT	JUMPER	OUTPUT
SINGLE PHASE	240	50/60	0-240	3.5	0.84	5.0	1.20	CW	1-4	4-3
			0-280	3.5	0.98	—	—	CCW	1-4	1-3
	120	50/60	0-280	3.5#	0.42§	—	—	CW	1-2	1-3
			0-280	3.5#	0.42§	—	—	CCW	4-7	4-3

UNLESS OTHERWISE SPECIFIED, TOLERANCE IS # DECIMALS .XX .0005 .002 .005 .010 .020 .050 .100 .150 .200 .300 .500 .750 1.000 1.500 2.000 3.000 5.000 7.500 10.000 Holes Angles Draft 1° 1-1/2° UNITS IN [mm] TITLE: SPEC. CONTROL DRAWING MOTORIZED VARIABLE XFMR. MODEL: M1020BCT MATERIAL: ALL DIMENSIONS APPLY AFTER PLATING THE INFORMATION AND DESIGN DISCLOSED HEREIN WAS ORIGINATED BY AND IS THE PROPERTY OF STACO ENERGY PRODUCTS CO., WHICH RESERVES ALL PATENT, PROPRIETARY, DESIGN, MANUFACTURING, REPRODUCTION, USE AND SALE RIGHTS THEREOF, AND TO ANY ARTICLE DISCLOSED THEREIN EXCEPT TO THE EXTENT RIGHTS ARE EXPRESSLY GRANTED TO OTHERS. THE FOREGOING DOES NOT APPLY TO VENDOR PROPRIETARY PARTS. DRAWN BY S.A. SMITH DATE 9/24/97 CHECKER DATE ENGINEER DATE WEIGHT APPROX. 16.75 LBS CODE IDENT. NO. 83008 DWG. NO. 031-2510 SHEET 1 OF 1

