



Quality Products. Service Excellence.

ABS Plastic Multipurpose Enclosures w/ Card Guides 1591 Series

Flame Retardant, General Purpose, Flanged Lid or Bottom

Key Features



- Ideally suited for vertical mounting of printed circuit boards (internal side walls include molded in card guides - see photo to the right).
- Integral card guides accept 1.5 mm (0.062") P.C. cards.
- Lap joint construction provides protection against access of dust and splashing water.
- Designed to meet IP54.
- Standard versions are molded from easy to machine flame retardant ABS plastic which carries a UL flammability rating of 94V-0.
- Economy versions are molded from general purpose (not flame-retardant) plastic.
- On standard versions the lid is secured with M3 x 10 mm Phillips machine screws, threaded into integral brass bushings. Perfect for applications when repetitive assembly and disassembly are required (see photo below to the right).
- Economy versions are assembled with self tapping screws into fully plastic posts.
- Black enclosures include black screws, all others - standard nickel finish screws.

Alternatives

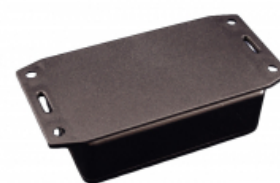
- If EMI/ RFI Shielding is required, try series **1591R**.
- If card guides are not required or horizontal mounting of printed circuit boards is preferred, try series **1591XX**.
- For transparent polycarbonate versions, try series **1591T**.

Photo Features

1591 Series enclosures are available in four colors.

- Gray ("GY")
- Black ("BK")
- Beige ("BG")
- Blue ("BU")





Integral card guides accept 1.5 mm (0.062") P.C. cards. Machine screws thread into brass bushing to attach the lid.

Available with wall mounting flanges molded into the lid.

Also available with an accessory flange attached to the bottom.

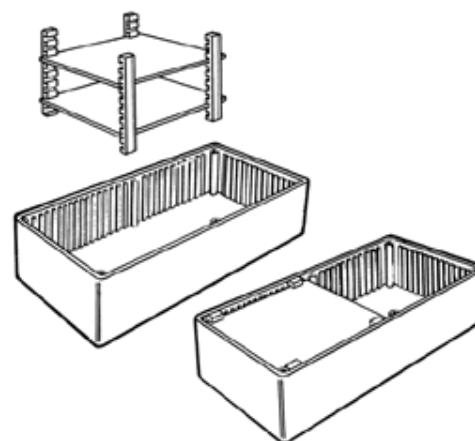
P.C. Board Card Adaptors:

- Allows mounting of PC boards horizontally within the enclosure.
- Molded from Flame retardant ABS plastic

Part Number **1591Z6** - Package of 6

Part Number **1591Z50** - Package of 50

Part Number **1591Z100** - Package of 100



Enclosures Without Mounting Flanges

| Flame Retardant ABS Enclosures | | | | General Purpose ABS Enclosures | | Length | Width | Depth (less lid) | Clear Lid Accessory |
|--------------------------------|---------|---------|---------|--------------------------------|----------|--------|-------|------------------|---------------------|
| Beige | Black | Blue | Gray | Black | Gray | | | | |
| 1591MBG | 1591MBK | 1591MBU | 1591MGY | 1591MSBK | 1591MSGY | 3.30 | 2.20 | 0.80 | 1591LC |
| 1591LBG | 1591LBK | 1591LBU | 1591LGY | 1591LSBK | 1591LSGY | 3.30 | 2.20 | 1.40 | 1591LC |
| 1591ABG | 1591ABK | 1591ABU | 1591AGY | 1591ASBK | 1591ASGY | 3.90 | 2.00 | 0.80 | 1591AC |
| 1591SBG | 1591SBK | 1591SBU | 1591SGY | 1591SSBK | 1591SSGY | 4.30 | 3.20 | 1.60 | 1591SC |
| 1591BBG | 1591BBK | 1591BBU | 1591BGY | 1591BSBK | 1591BSGY | 4.40 | 2.40 | 1.10 | 1591BC |
| 1591CBG | 1591CBK | 1591CBU | 1591CGY | 1591CSBK | 1591CSGY | 4.70 | 2.60 | 1.40 | 1591CC |
| 1591TBG | 1591TBK | 1591TBU | 1591TGY | 1591TSBK | 1591TSGY | 4.70 | 3.20 | 2.20 | 1591TC |
| 1591UBG | 1591UBK | 1591UBU | 1591UGY | 1591USBK | 1591USGY | 4.70 | 4.70 | 2.20 | 1591UC |
| 1591VBG | 1591VBK | 1591VBU | 1591VGY | 1591VSBK | 1591VSGY | 4.70 | 4.70 | 3.50 | 1591VC |
| 1591GBG | 1591GBK | 1591GBU | 1591GGY | 1591GSBK | 1591GSGY | 4.80 | 3.70 | 1.20 | 1591GC |
| 1591DBG | 1591DBK | 1591DBU | 1591DGY | 1591DSBK | 1591DSGY | 5.90 | 3.20 | 1.80 | 1591DC |
| 1591HBG | 1591HBK | 1591HBU | 1591HGY | 1591HSBK | 1591HSGY | 6.50 | 2.80 | 1.00 | 1591HC |
| 1591EBG | 1591EBK | 1591EBU | 1591EGY | 1591ESBK | 1591ESGY | 7.48 | 4.33 | 2.23 | 1591EC |

Enclosures With Mounting Flanges

| | | | |
|----------------------------------|----------------------------------|--------------------------------|------------------------------------|
| Flame Retardant ABS, Flanged Lid | General Purpose ABS, Flanged Lid | Flame Retardant, Bottom Flange | General Purpose ABS, Bottom Flange |
|----------------------------------|----------------------------------|--------------------------------|------------------------------------|

| Flame Retardant ABS, Flanged Lid | | General Purpose ABS, Flanged Lid | | Flame Retardant, Bottom Flange | | General Purpose ABS, Bottom Flange | | Length | Width | Depth (less lid) | Clear Lid Accessory |
|-------------------------------------|-----------|-------------------------------------|-----------|-----------------------------------|------------|---------------------------------------|------|--------|-------|------------------------|------------------------|
| Black | Gray | Black | Black | Gray | Black | Gray | Gray | | | | |
| 1591MFLBK | 1591MFLGY | 1591MSFLBK | 1591MF2BK | 1591MF2GY | 1591MF2SBK | 1591MF2SGY | 3.30 | 2.20 | 0.80 | 1591LC | |
| 1591LFLBK | 1591LFLGY | 1591LSFLBK | 1591LF2BK | 1591LF2GY | 1591LF2SBK | 1591LF2SGY | 3.30 | 2.20 | 1.40 | 1591LC | |
| 1591AFLBK | 1591AFLGY | 1591ASFLBK | 1591AF2BK | 1591AF2GY | 1591AF2SBK | 1591AF2SGY | 3.90 | 2.00 | 0.80 | 1591AC | |
| 1591SFLBK | 1591SFLGY | 1591SSFLBK | 1591SF2BK | 1591SF2GY | 1591SF2SBK | 1591SF2SGY | 4.30 | 3.20 | 1.60 | 1591SC | |
| 1591BFLBK | 1591BFLGY | 1591BSFLBK | 1591BF2BK | 1591BF2GY | 1591BF2SBK | 1591BF2SGY | 4.40 | 2.40 | 1.10 | 1591BC | |
| 1591CFLBK | 1591CFLGY | 1591CSFLBK | 1591CF2BK | 1591CF2GY | 1591CF2SBK | 1591CF2SGY | 4.70 | 2.60 | 1.40 | 1591CC | |
| 1591TFLBK | 1591TFLGY | 1591TSFLBK | 1591TF2BK | 1591TF2GY | 1591TF2SBK | 1591TF2SGY | 4.70 | 3.20 | 2.20 | 1591TC | |
| 1591UFLBK | 1591UFLGY | 1591USFLBK | 1591UF2BK | 1591UF2GY | 1591UF2SBK | 1591UF2SGY | 4.70 | 4.70 | 2.20 | 1591UC | |
| 1591VFLBK | 1591VFLGY | 1591VSFLBK | 1591VF2BK | 1591VF2GY | 1591VF2SBK | 1591VF2SGY | 4.70 | 4.70 | 3.50 | 1591VC | |
| 1591GFLBK | 1591GFLGY | 1591GSFLBK | 1591GF2BK | 1591GF2GY | 1591GF2SBK | 1591GF2SGY | 4.80 | 3.70 | 1.20 | 1591GC | |
| 1591DFLBK | 1591DFLGY | 1591DSFLBK | 1591DF2BK | 1591DF2GY | 1591DF2SBK | 1591DF2SGY | 5.90 | 3.20 | 1.80 | 1591DC | |
| 1591HFLBK | 1591HFLGY | 1591HSFLBK | 1591HF2BK | 1591HF2GY | 1591HF2SBK | 1591HF2SGY | 6.50 | 2.80 | 1.00 | 1591HC | |
| 1591EFLBK | 1591EFLGY | 1591ESFLBK | 1591EF2BK | 1591EF2GY | 1591EF2SBK | 1591EF2SGY | 7.48 | 4.33 | 2.23 | 1591EC | |

Data subject to change without notice

© 2018. Hammond Manufacturing Ltd. All rights reserved.