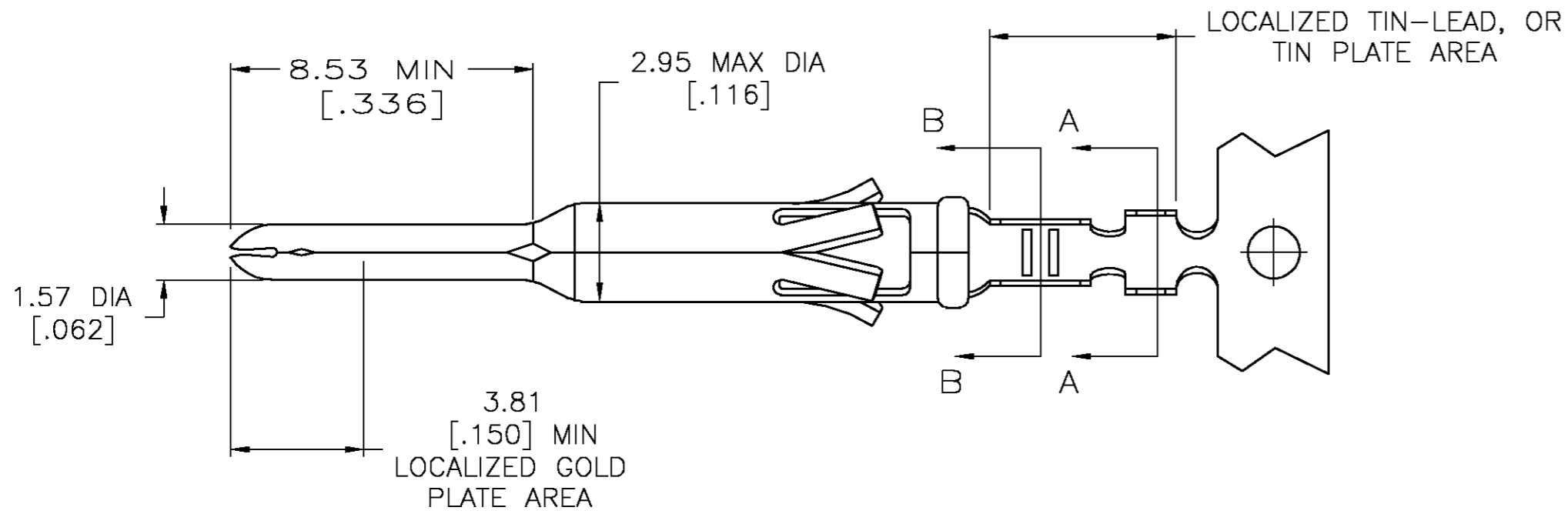
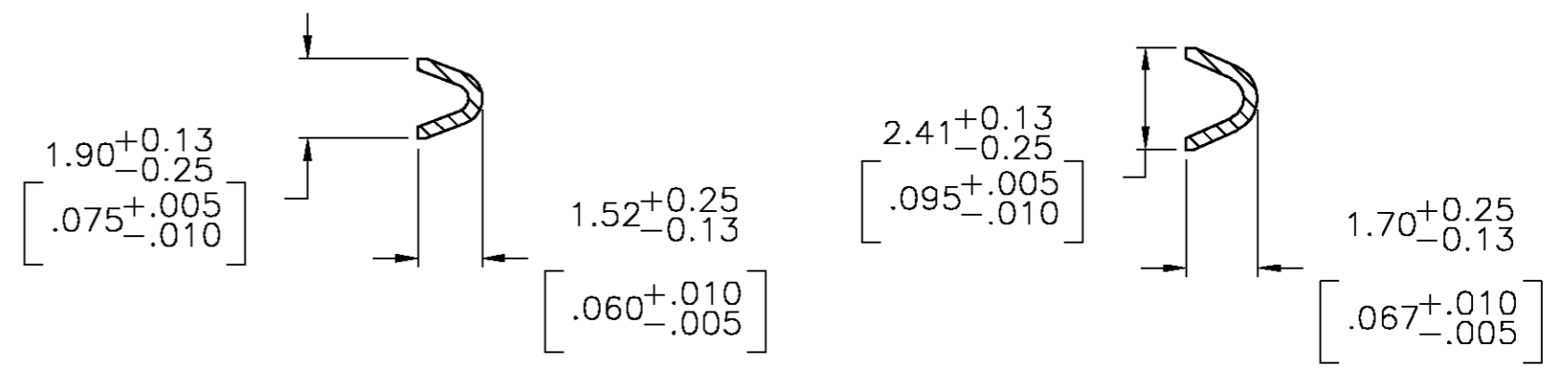
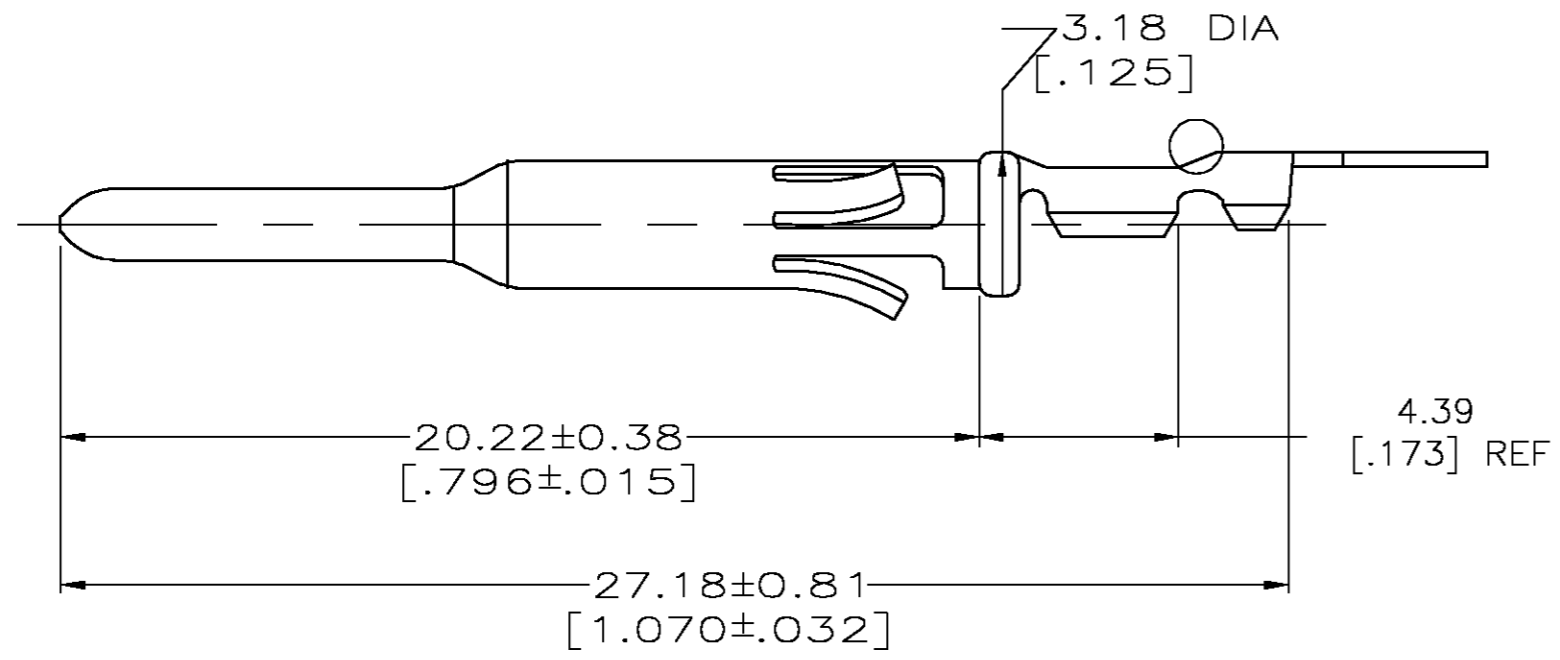
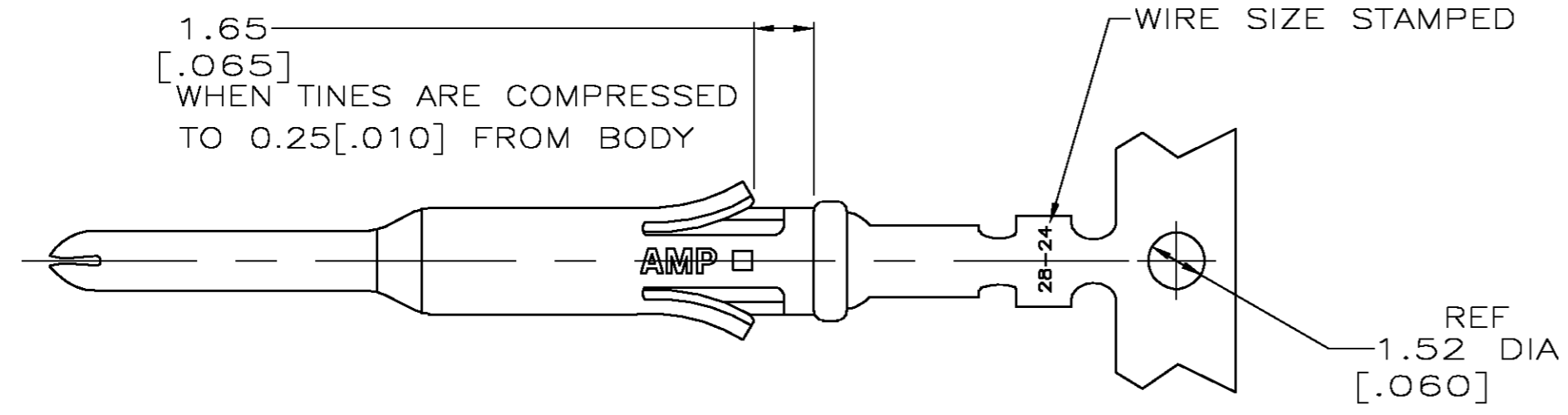


THIS DRAWING IS UNPUBLISHED. RELEASED FOR PUBLICATION
 © COPYRIGHT BY TYCO ELECTRONICS CORPORATION. ALL RIGHTS RESERVED.

LOC		DIST		REVISIONS			
P	LTR	DESCRIPTION	DATE	DWN	APVD		
FT	0	H	REVISED PER 0G3B-1175-04	12/21/04	SS	GS	



1. WIRE RANGE 28-24 AWG.
 2. INSULATION RANGE 0.89-1.40 [.035-.055] DIA.
 3. FOR LOOSE PIECE PART SEE DWG 66595.
- Ⓐ 0.76um [.000030] MIN GOLD IN LOCALIZED GOLD PLATE AREA, 1.27um [.000050] MIN TIN-LEAD IN LOCALIZED TIN-LEAD PLATE AREA, BOTH OVER 1.27um [.000050] MIN NICKEL.
- Ⓑ TIN PLATED.
- Ⓒ GOLD PLATING PER MIL-G-45204, TIN PER MIL-T-10727 AND NICKEL PER QQ-N-290.
- Ⓓ 0.76um [.000030] MIN GOLD IN LOCALIZED GOLD PLATE AREA, 1.27um [.000050] MIN TIN IN LOCALIZED TIN PLATE AREA, BOTH OVER 1.27um [.000050] MIN NICKEL.

DESCRIPTION	FINISH	PART NO.
REVERSE REELED FOR MINI-APPICATOR	Ⓐ	1-66585-0
REVERSE REELED FOR MINI-APPICATOR	Ⓐ	66585-4
-	Ⓐ	66585-3
REVERSE REELED FOR MINI-APPICATOR	Ⓐ	66585-2
-	Ⓐ	66585-1

THIS DRAWING IS A CONTROLLED DOCUMENT.

DWN D.HARDY 06/15/94
 CHK R.STONE 06/22/94

APVD -

PRODUCT SPEC -

APPLICATION SPEC -

MATERIAL BRASS PER MIL-C-50

FINISH SEE TABLE Ⓐ

WEIGHT -

CUSTOMER DRAWING

NAME CONTACT, PIN, STRIP, TYPE VI, MULTIMATE

SIZE A2 CAGE CODE 00779 C=66585

SCALE 6:1 SHEET 1 OF 1 REV H