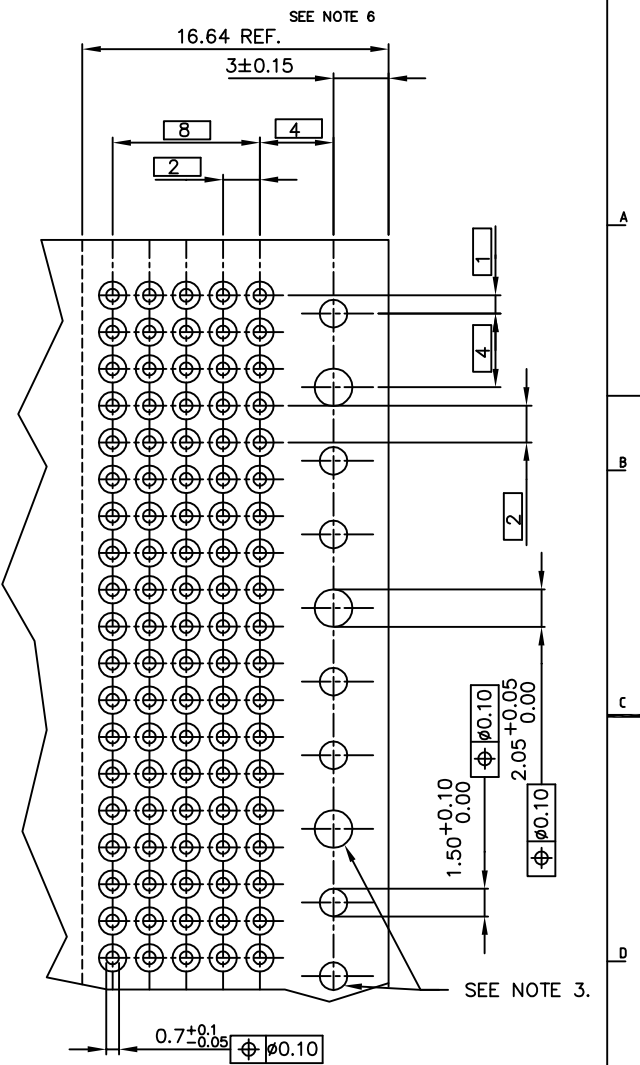
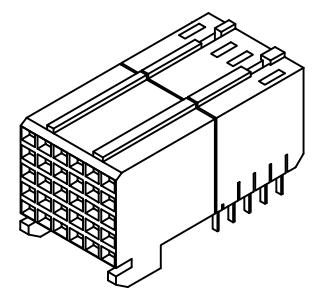
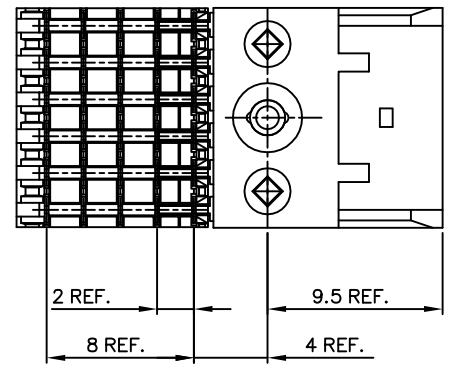
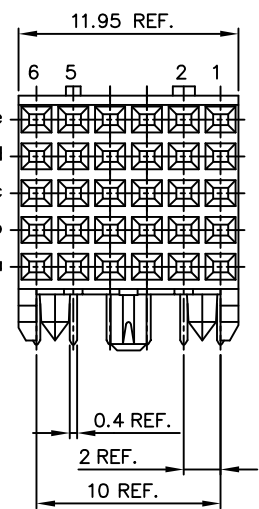
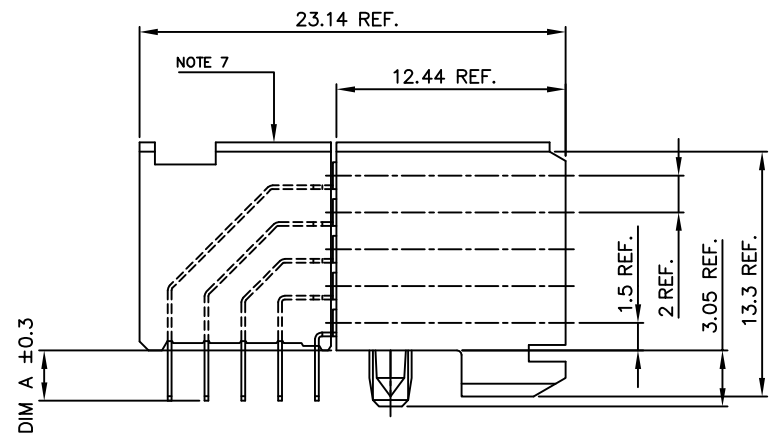


| PLATING CONTACT AREA: | |
|-----------------------|-------------------|
| DASH NR: | PERFORMANCE LEVEL |
| -1YY/1YYLF | TELCORDIA CO |
| -2YY/2YYLF | CUSTOMER SPECIAL |
| -3YY/3YYLF | CUSTOMER SPECIAL |

| PC BOARD VERSIONS | | | LOADING CONFIGURATION |
|-------------------|---------------|-------|-----------------------|
| PRODUCT NR: | PCB THICKNESS | DIM A | FULLY LOADED |
| 85863-X02/X02LF | 1.6 | 2.90 | |
| 85863-X12/X12LF | 2.4 | 3.53 | |

* SPECIFY LOADING P/N SEE PAGE 2



RECOMMENDED HOLE PATTERN, COMPONENT SIDE.

- NOTES:
- BODY MAT'L: LIQUID CRYSTAL POLYMER 30% GLASS
FLAME RETARDANT ACC. UL 94-V0
 - TERMINAL MATERIAL: PHOSPHOR BRONZE.
 - INDICATED HOLES ARE UNPLATED.
 - PLATING SOLDER TAILS 2-8 μ m SnPb 90-97 OR 2-8 μ m PURE Sn
 - PRODUCT MARKING: PART NUMBER & BATCH ID.
 - SET BACK FOR TAIL BLOCK
 - TOP SURFACE OF PRESS BLOCK MAY EXTEND UP TO 0.4MM HIGHER THAN HOUSING. THIS MAY AFFECT THE TAIL LENGTH BEFORE APPLICATION TO A BOARD.
 - THIS PRODUCT MEETS EUROPEAN UNION DIRECTIVES AND OTHER COUNTRY REGULATIONS AS DESCRIBED IN GS-22-008
 - THE HOUSING WILL WITHSTAND EXPOSURE TO 260DEGREE PEAK TEMPERATURE FOR 10 SECONDS IN A WAVE SOLDER APPLICATION.

PC BOARD THICKNESS \bar{n} 0.2
(SEE TABLE)

| | | | | | | | | | |
|-------------|-----------|---------------------------------------|----------|---------------|---|--------|----------------|-------------|--------------|
| mat'l. code | | tolerances unless otherwise specified | | CUSTOMER COPY | www.fciconnect.com | | | | |
| SEE NOTE | | | | | | | | | |
| ltr | ecn no | dr | date | linear | projection | | | | |
| H | 06-012848 | dr | 09/06/12 | | file | | | | |
| | | | | angles | 5 ROW R.A. S.T.B. SIGNAL RECEPT. 12 mm MOD.PP | | | | |
| D | 0604-0104 | Clu | 041222 | dr | R. VISSCHERS | 941005 | product family | METRAL (tm) | code |
| E | 0607-0169 | Cent | 05/15/07 | engr | E. FELJEN | 941005 | size | dwg no | 213 |
| F | 0608-0171 | TER | 8/26/08 | chr | E. FELJEN | 941005 | scale | 5:1 | A2 |
| G | 0609-0068 | Cent | 06/06/08 | app | E. FELJEN | 941005 | | 85863 | sheet 1 of 2 |
| sheet | revision | H | H | | | | | | |
| index | sheet | 1 | 2 | | | | | | |


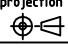
The data furnished herein is for information only. It is not intended to be used as a substitute for the original drawing. FCI Electronics is not responsible for any errors or omissions in this document.

| PRODUCT NO | PCB THICKNESS | DIM "A" | ROW | 6 | 5 | 4 | 3 | 2 | 1 |
|--------------------------|---------------|---------|-----|---|---|---|---|---|---|
| 85863-X03 85863-X03LF | 1.6 | 2.90 | E | X | X | X | - | X | X |
| | | | D | X | X | X | - | X | X |
| | | | C | X | X | X | X | - | - |
| | | | B | X | X | X | - | X | X |
| | | | A | X | X | X | - | X | X |

| LOAD PATTERN | |
|--------------|------------|
| X | LOADED |
| - | NOT LOADED |

This data is classified "restricted" information. Reproduction or communication of this data
 without written approval from the originator is prohibited.
 Property of FCI Inc.
 © FCI Inc.

All rights are reserved. Reproduction or transmission in any form
 without written approval from the originator is prohibited.
 Property of FCI Inc.
 © FCI Inc.

| | | | | | | | |
|-------------|----------------|---------------------------------------|---------------------|---------------|---|---|--|
| mat'l. code | | tolerances unless otherwise specified | | CUSTOMER COPY | |  www.fciconnect.com | |
| ltr | ecr no | dr | date | linear | projection | title 5 ROW R.A. S.T.B. SIGNAL RECEPT. 12 mm MOD.PP | |
| H | | | | angles |  | product familMETRAL (tm) code size dwg no 213 | |
| | | dr | R. VISSCHERS 941005 | mm | scale | A2 85863 sheet 2 of 2 | |
| | | engr | E. FEIJEN 941005 | | 5:1 | | |
| | | chr | E. FEIJEN 941005 | | | | |
| | | app | E. FEIJEN 941005 | | | | |
| sheet index | revision sheet | | | | | | |