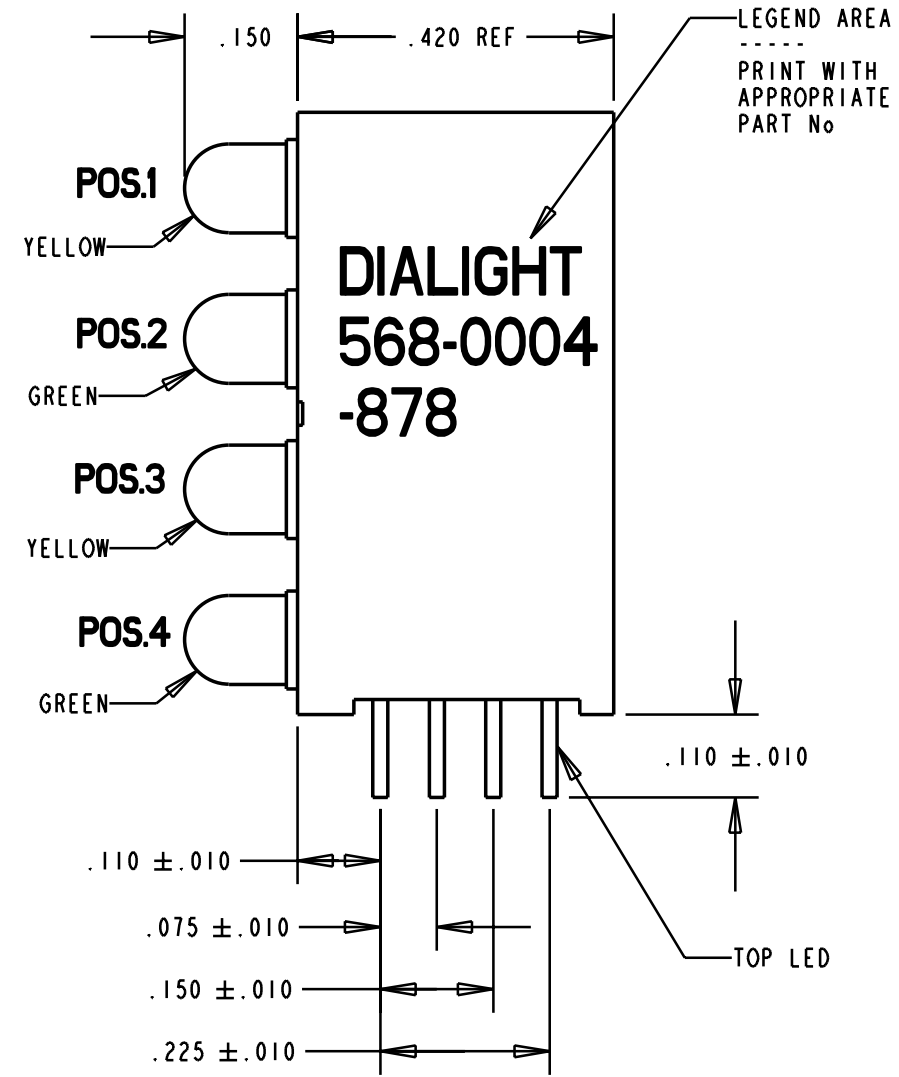
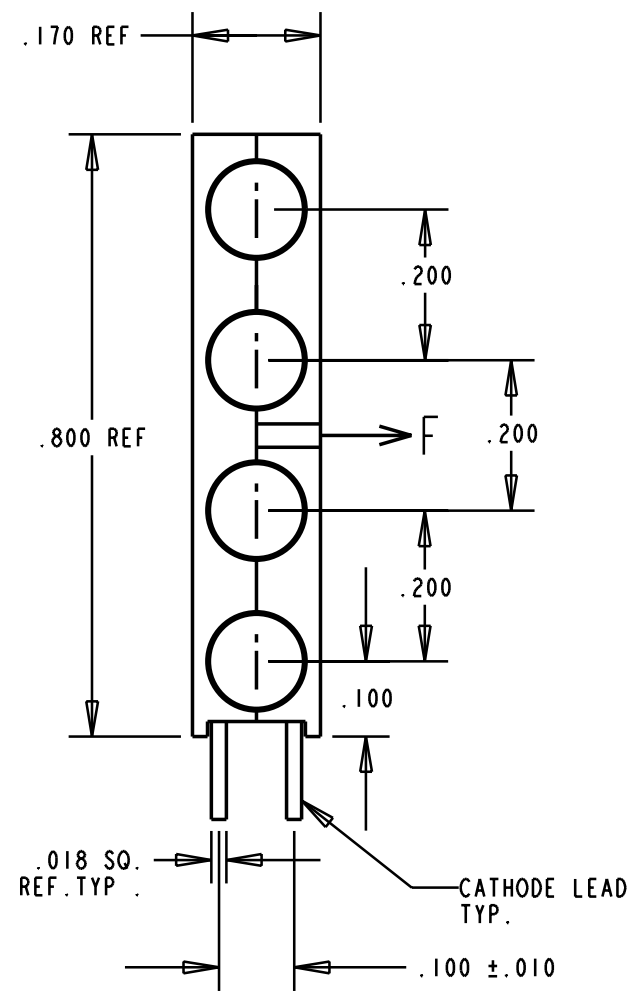
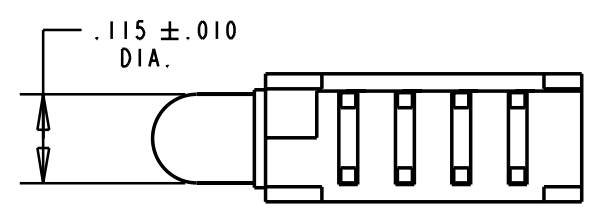
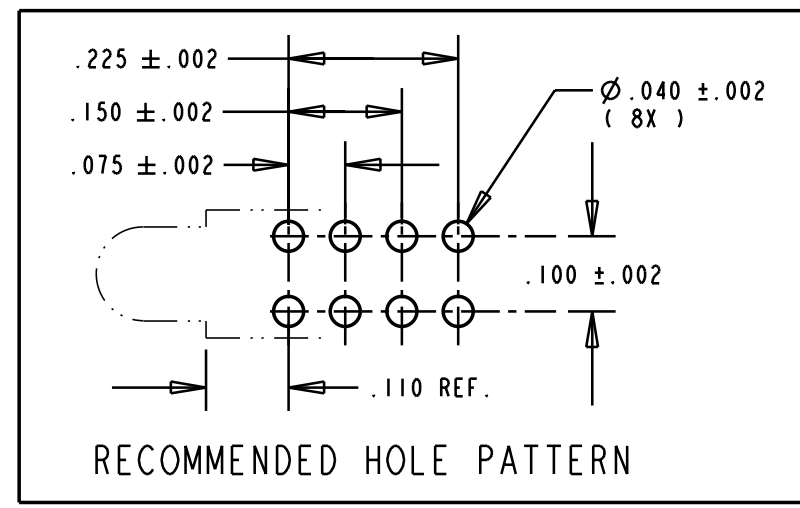


REV.	ECN NO.	REVISIONS	DRN.	CKD.	APP.	DATE
A	—	NEW RELEASE	DC			



OPERATING CHARACTERISTICS AT 25°C AMBIENT						
CHARACTERISTICS	L.E.D. COLOR	MIN	TYP	MAX	UNITS	TEST CONDITIONS
LUMINOUS INTENSITY	YELLOW	1.0	1.6		mcd	$I_f = 2 \text{ mA}$
	GREEN	1.0	2.1			
FORWARD VOLTAGE	YELLOW		1.9	2.7	V	$I_f = 2 \text{ mA}$
	GREEN		1.8	2.2		
REVERSE VOLTAGE	ALL	5			V	$I_R = 50 \mu\text{A}$
PEAK WAVELENGTH	YELLOW		583		nm	
	GREEN		565			
VIEWING ANGLE	ALL		50		Degree	

ABSOLUTE MAXIMUM RATING AT 25°C AMBIENT		UNITS	YELLOW	GREEN
TOTAL POWER		mW	36	24
D.C. FORWARD CURRENT		mA	7.0	7.0
LEAD SOLDERING TEMPERATURE, 5 SEC., 1/16" FROM BODY		°C	260	260
OPERATING TEMPERATURE		°C	-55 TO +100	-20 TO +100
STORAGE TEMPERATURE		°C	-55 TO +100	-55 TO +100



NOTES:
 1- LEADS TO FIT INTO HOLES SPACED AS PER HOLE PATTERN.
 2- LED LEAD DIMENSIONS SHOWN ARE MEASURED AT HOUSING EXIT.
 3- DIALIGHT PART NO. 568-0004-878.

THIS DRAWING AND THE CONTENTS HEREIN ARE CONFIDENTIAL AND THE SOLE PROPERTY OF DIALIGHT. REPRODUCTION OF THIS DRAWING OR CONSTRUCTION OF ANY PARTS WITHIN THIS DRAWING ARE FORBIDDEN WITHOUT THE WRITTEN CONSENT OF DIALIGHT.

SCALE 4:1	DRAWING NUMBER	REV
ALL DIM'S IN: INCHES	C-16555	A
TOLERANCES: UNLESS OTHERWISE SPECIFIED	TITLE	
FRACTIONS: ±1/64	4X1 CBI BLOCK WITH .110 LEAD TRIM	
DECIMALS (.XX): ±.020	MATERIAL	
DECIMALS (.XXX): ±.015		
ANGLES: ±3°		
FINISH:		
FSCM 83330	Dialight	1913 ATLANTIC AVE. MANASQUAN, N.J. 08736
	SHEET OF	FAMILY TABLE: