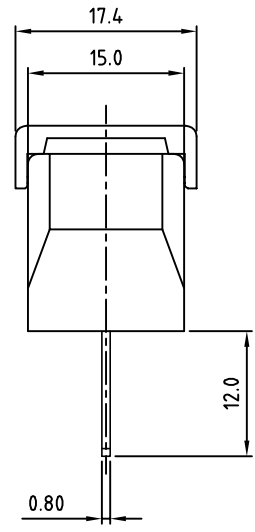
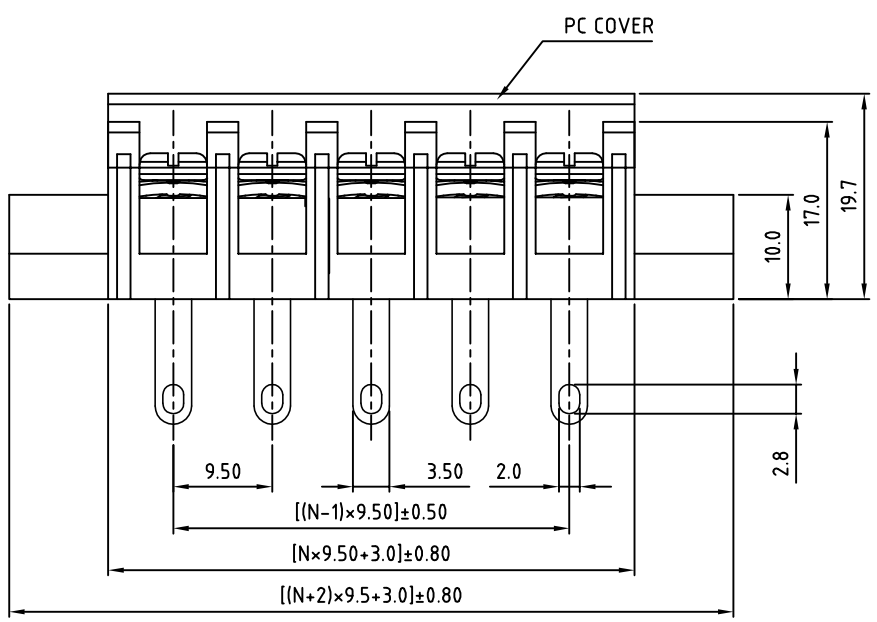
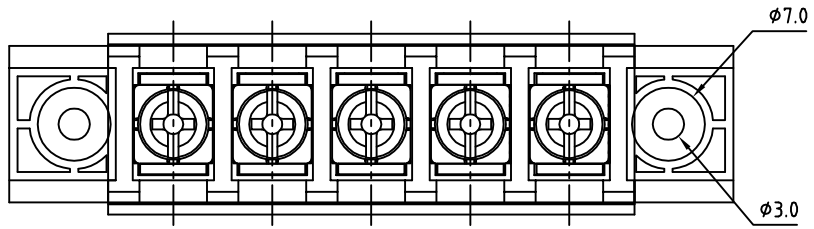


SIGN	DATE	DESCRIPTION	APPROVER
THIS IS CAD DRAWING, DO NOT REVISE MANUALLY!!!			



- SPECIFICATIONS**
- VOLTAGE & CURRENT: 300 V, 20 A
- WITHSTANDING VOLTAGE: AC 2000 V/Min
- INSULATION RESISTANCE: 1000 MΩ OR MORE AT DC 500 V
- TEMPERATURE RANGE: -40 °C ~ +105 °C
- SCREW TORQUE VALUE: 12 Lb-in.
- WIRE RANGE: 22 - 12AWG
- 1) MOLDED PARTS: THERMOPLASTIC, UL 94 V-0 BLACK
- 2) TERMINAL: BRASS, 0.8t, Tin PLATED
- 3) TERMINAL SCREWS: STEEL, Ni PLATED, M3.5
- 4) COVER MATERIAL: PC
- APPROVAL: us

RoHS Compliant

PART NUMBER: **OSTYK505XX130**

NO. OF POLES

- 02: 2 POLES
- 03: 3 POLES
- 04: 4 POLES

30: 30 POLES

N=Number of poles

THESE DRAWINGS AND SPECIFICATIONS ARE THE PROPERTY OF ON-SHORE TECHNOLOGY, INC. AND SHALL NOT BE REPRODUCED, COPIED OR USED IN ANY MANNER WITHOUT THE PRIOR WRITTEN CONSENT OF ON-SHORE TECHNOLOGY, INC.



TITLE		OSTYK-505 W/Flange&With Cover Series				
PART NO.		OSTYK505XX130			DWG NO.	OSTYK505XX130.DWG
APPROVED	CHECKED	DESIGNED	DRAWN	CUST NO.	Tolerance	
Shi Jun 2007.07.18	Seamus 2007.07.18	LUCY 2007.7.18	LUCY 2007.7.18		X. ±0.50	
					UNIT: mm	
					SCALE: NONE	
SHEET: 01/01					REV.: B	
					X.X ±0.30	
					X.XX ±0.10	
					X° ±1°	