

Housing set - HC-MOT-AFL-SET - 1409053

Please be informed that the data shown in this PDF Document is generated from our Online Catalog. Please find the complete data in the user's documentation. Our General Terms of Use for Downloads are valid (<http://download.phoenixcontact.com>)



Connector on motor side, EMC metal housing attachment incl. crimp contact insert, with flat seal and coated protective cover, without crimp contacts, housing with coatable thick-layer passivation



Key commercial data

| | |
|----------------------|----------|
| Packing unit | 1 PCE |
| Custom tariff number | 79070000 |
| Country of origin | Germany |

Technical data

General

| | |
|---|--|
| Pollution degree | 3 |
| Surge voltage category | III |
| Insertion/withdrawal cycles | ≥ 100 |
| Design | MOT |
| Conductor cross section | 0.35 mm ² ... 2.5 mm ² (Power crimp contacts) 0.14 mm ² ... 1 mm ² (Control crimp contacts) |
| Connection cross section AWG | 20 ... 14 (Power crimp contacts) 26 ... 18 (Control crimp contacts) |
| Stripping length of the individual wire | 6 mm (Power crimp contacts) 4.5 mm (Control crimp contacts) |

Ambient conditions

| | |
|---------------------------------|-------------------|
| Ambient temperature (operation) | -30 °C ... 100 °C |
| Degree of protection | IP67 |

Material data

| | |
|---|------|
| Inflammability class according to UL 94 | V0 |
| Seal material | EPDM |

Housing set - HC-MOT-AFL-SET - 1409053

Technical data

Material data

| | |
|--|--------------|
| Housing material | GD-Zn |
| Contact material | Copper alloy |
| Contact surface material | Au |
| Material of contact surface, power contact | Au |
| Material of contact surface, control contact | Au |
| Contact carrier material | PA |

Electrical characteristics

| | |
|----------------------------------|------------------------------------|
| Rated voltage for power contacts | 400/800 V |
| Rated voltage (III/3) | 250 V (Signal) |
| Rated surge voltage | 6 kV (Phase/housing power circuit) |
| | 8 kV (Phase/phase power circuit) |
| | 4 kV (Control circuit) |
| Rated current | 16.5 A (power contacts) |
| | 2.5 A (control contacts) |

Technical data according to UL approval

| | |
|---------------------------------|--------|
| Nominal voltage, power contact | 600 V |
| Nominal current, power contact | 16.5 A |
| Nominal voltage, signal contact | 250 V |
| Nominal current, signal contact | 2.5 A |

Classifications

eCl@ss

| | |
|------------|----------|
| eCl@ss 4.0 | 27140816 |
| eCl@ss 4.1 | 27140816 |
| eCl@ss 5.0 | 27143424 |
| eCl@ss 5.1 | 27143424 |
| eCl@ss 6.0 | 27143424 |
| eCl@ss 7.0 | 27440209 |
| eCl@ss 8.0 | 27440209 |

ETIM

| | |
|----------|----------|
| ETIM 4.0 | EC000437 |
| ETIM 5.0 | EC000437 |

UNSPSC

| | |
|-------------|----------|
| UNSPSC 6.01 | 30211923 |
|-------------|----------|

Housing set - HC-MOT-AFL-SET - 1409053

Classifications

UNSPSC

| | |
|---------------|----------|
| UNSPSC 7.0901 | 39121522 |
| UNSPSC 11 | 39121522 |
| UNSPSC 12.01 | 39121522 |
| UNSPSC 13.2 | 39121522 |

Approvals

Approvals

Approvals

CSA / CSAus / GOST / UL Listed / cCSAus

Ex Approvals

Approvals submitted

Approval details

| | |
|--------------------------------|-------|
| CSA | |
| mm ² /AWG/kcmil | 18 |
| Nominal current I _N | 2.5 A |
| Nominal voltage U _N | 250 V |

| | |
|--------------------------------|-------|
| CSAus | |
| mm ² /AWG/kcmil | 18 |
| Nominal current I _N | 2.5 A |
| Nominal voltage U _N | 250 V |

| | |
|------|--|
| GOST | |
|------|--|

Housing set - HC-MOT-AFL-SET - 1409053

Approvals

| | |
|--------------------------------|-------|
| UL Listed | |
| mm ² /AWG/kcmil | 18 |
| Nominal current I _N | 2.5 A |
| Nominal voltage U _N | 250 V |

| |
|--------|
| cCSAus |
|--------|

Accessories

Accessories

Coding element

Coding profile - CP-HCC 4 - 1600027



Coding profile, Number of positions: 1, Color: red

Protective cover

Protective cap - HC-MOT-SD-L-KU - 1409147



Coated protective cover for the housing on the motor side

Seal

Grommet - HC-MOT-AFL-FL-DI - 1409257

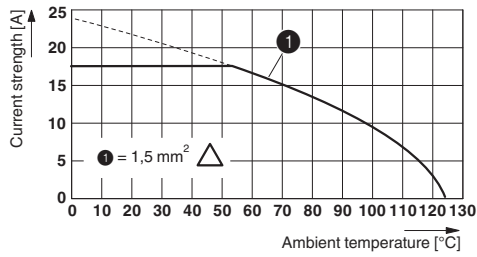


Flat gasket for flange

Housing set - HC-MOT-AFL-SET - 1409053

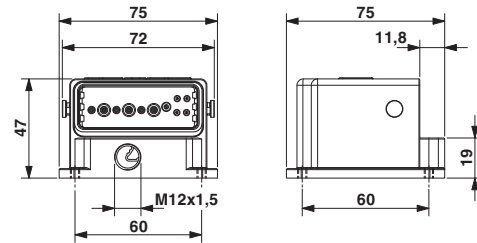
Drawings

Diagram



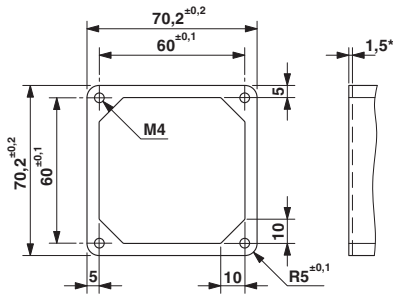
Derating diagram

Dimensioned drawing



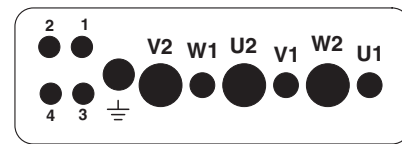
Dimensional drawing

Dimensioned drawing



Flange drawing (1.5* interface dimensions up to this height).

Schematic diagram



Connector pin assignment, connection side