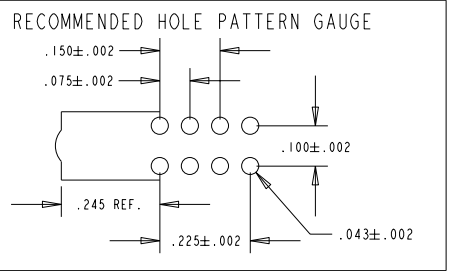
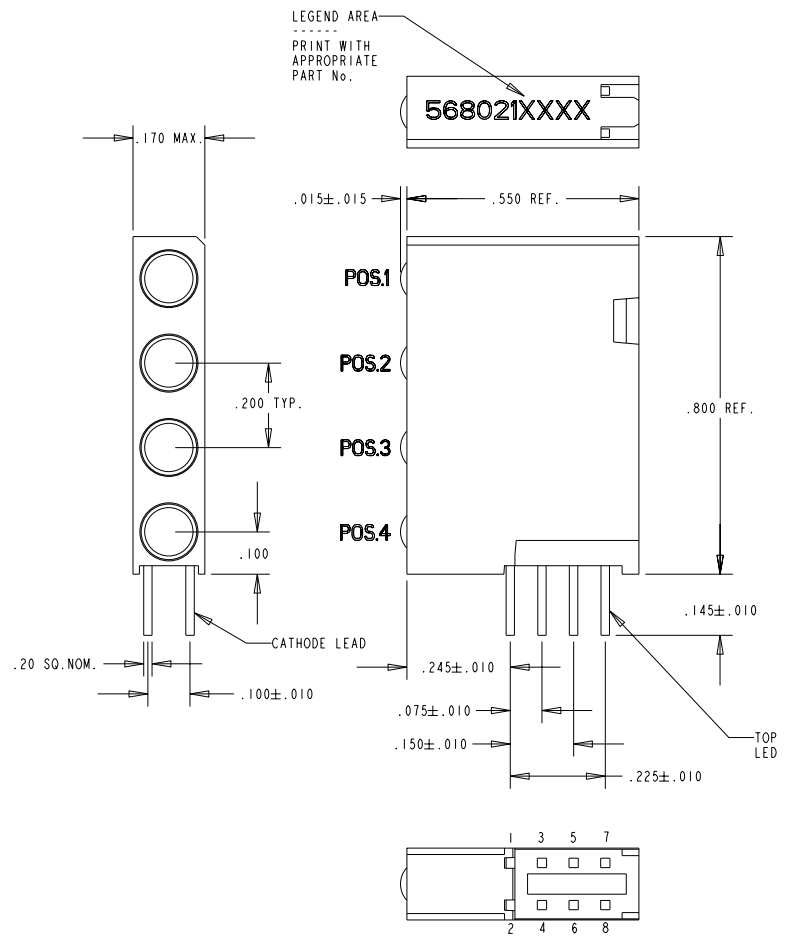
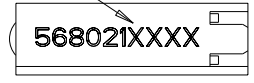


PART NUMBER	LED COLOR			
	POS.1	POS.2	POS.3	POS.4
568-0212-222	GREEN	GREEN	GREEN	GREEN
568-0213-333	YELLOW	YELLOW	YELLOW	YELLOW

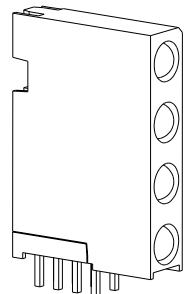
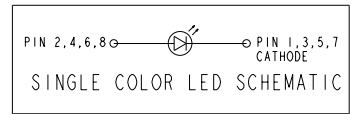
- NOTES:
- LEADS TO FIT INTO HOLES SPACED AS PER HOLE PATTERN GAUGE
 - LEAD DIMENSIONS SHOWN ARE MEASURED AT HOUSING EXIT
 - FOR DIALIGHT PART NUMBER: 568-021X-XXX

LEGEND AREA
 PRINT WITH
 APPROPRIATE
 PART No.



OPERATING CHARACTERISTICS AT 25°C AMBIENT						
CHARACTERISTICS	L.E.D. COLOR	MIN	TYP	MAX	UNITS	TEST CONDITIONS
LUMINOUS INTENSITY	GREEN	1.0	1.6		mcd	I F = 2 mA
	YELLOW	1.0	1.6			
FORWARD VOLTAGE	GREEN		1.9	2.2	V	I F = 2 mA
	YELLOW		1.8	2.7		
REVERSE CURRENT	ALL			10	μA	V R = 5 V
PEAK WAVELENGTH	GREEN		565		nm	
	YELLOW		585			
VIEWING ANGLE	ALL		60		Degree	

ABSOLUTE MAXIMUM RATING AT 25°C AMBIENT			
	GREEN	YELLOW	UNITS
POWER DISSIPATION	20		mW
CONTINUOUS FORWARD CURRENT	7		mA
FORWARD SURGE CURRENT (10 μ SEC PULSE)	500		mA
LEAD SOLDERING TEMPERATURE, 5 SEC., 1/16" FROM BODY	260		°C
OPERATING TEMPERATURE	-55 TO 100		°C
STORAGE TEMPERATURE	-55 TO 100		°C



THIS DRAWING AND THE CONTENTS HEREIN ARE CONFIDENTIAL AND THE SOLE PROPERTY OF DIALIGHT. REPRODUCTION OF THIS DRAWING OR CONSTRUCTION OF ANY PARTS WITHIN THIS DRAWING ARE FORBIDDEN WITHOUT THE WRITTEN CONSENT OF DIALIGHT.		
SCALE: DRAWING SCALE ALL DIM'S IN: INCHES (MM)	DRAWING NUMBER C-16953	REV A
TOLERANCES: UNLESS OTHERWISE SPECIFIED FRACTIONS: ±1/64 DECIMALS (.XX): ±.01 DECIMALS (.XXX): ±.005 DECIMALS (.XXXX): ±.0005 ANGLES: ±1°	TITLE EXTENDED 4x1 SINGLE CBI BLOCK	
FINISH:	MATERIAL	
FSCM 83330	Dialight	1501 ROUTE 34 SOUTH FARMINGDALE, NJ 07727
	SHEET OF	FAMILY TABLES: