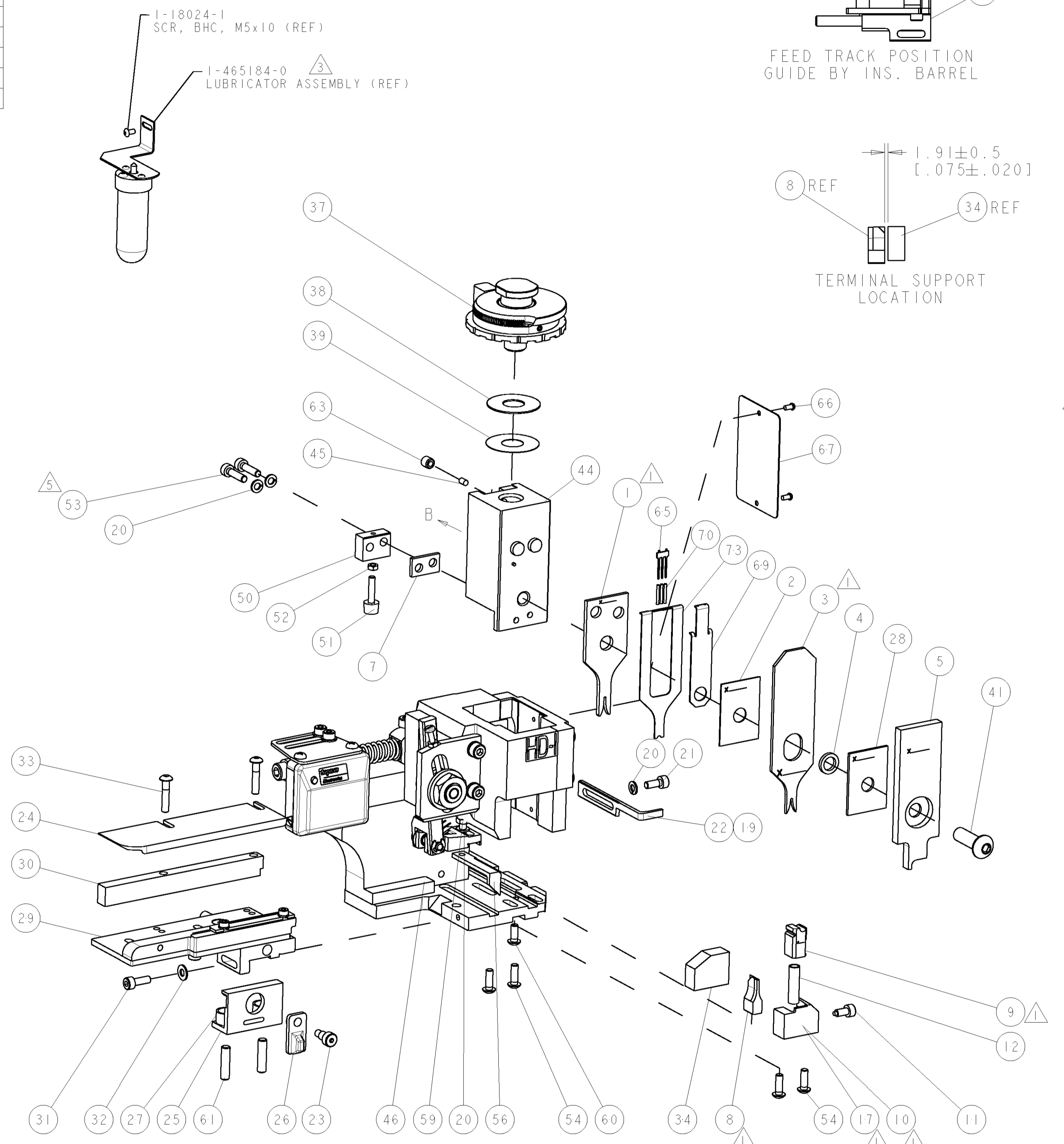


PART NUMBER	REV	TERMINATOR	FEED TYPE	DESCRIPTION
1528818-1	A	LEADMAKER	MECH POST FEED	CUTS CARRIER
1528818-2	A	BENCH	MECH PRE FEED	CUTS CARRIER
1528818-6	A	LEADMAKER	MECH POST FEED	CONTINUOUS CARRIER
7-1528818-1	A	LEADMAKER	MECH POST FEED	-1 AND SPARE PARTS
7-1528818-2	A	BENCH	MECH PRE FEED	-2 AND SPARE PARTS
7-1528818-6	A	LEADMAKER	MECH POST FEED	-6 AND SPARE PARTS
7-1528818-7	A	-	-	SPARE PARTS KIT

CRIMP DATA		BERG TERMINAL		BERG/TYCO CRIMP SPECS	
TERMINAL NAME: C.T.W. MALE PIN CONTACT					
CRIMP	SIZE	TYPE	RANGE		
WIRE	1.17 [0.046 IN]	F	26-22 AWG		
INSUL	1.57 [0.062 IN]	O	1.10-1.52 [0.043-0.060 IN]		
WIRE STRIP LENGTH		APPL INSTRUCTIONS			
3.30-4.10 [1.30-1.61 IN]		408-8322 & 408-8490			
TERMINAL APPL SPEC		FEED		8.90 [0.350 IN]	
TERMINALS APPLIED		TYCO TERM PN			
-		MANUF'S TERM PN		MANUF'S TERM PN	
-		1949424-1		75967-312	
-		1949424-2		75967-322	
-		1949424-3		75967-332	
-		1949424-4		75967-362	
WIRE SIZE	CRIMP HEIGHT	REF SETTING		-	
24 AWG	0.81-0.86 [0.032-0.034 IN]	C7		-	

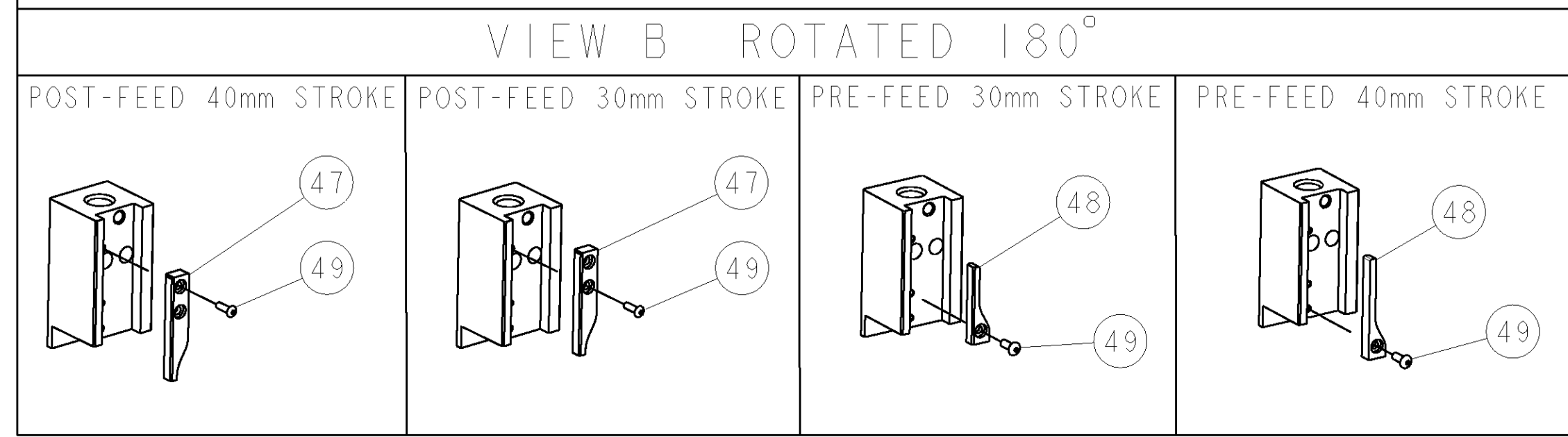


SET UP GAGE		REVISONS	
458637-3	LOC A	DIST 66	
REV	DATE	BY	APPD
A	01AUG2007	DP	MC

REV	DATE	BY	APPD	DESCRIPTION	ITEM NO	
-	-	-	-	1490525-3	DEPRESSOR, WIRE	73
-	-	-	-	-	-	72
-	-	-	-	1338705-3	DOCUMENTATION PACKAGE	71
-	3	3	3	2-23147-2	SPRING, COMPRESSION	70
-	-	-	-	1490524-1	DEPRESSOR, SPACER	69
-	-	-	-	-	-	68
-	-	-	-	461264-5	PLATE, IDENTIFICATION	67
-	2	2	2	21017-2	SCREW, DRIVE	66
-	-	-	-	1424350-1	HOLDER, PIN, WIRED	65
-	-	-	-	-	-	64
-	-	-	-	3-18031-0	SCR, SET, CUP POINT M6 X 6.0	63
-	-	-	-	-	-	62
-	2	2	2	2-18032-5	SCR, SET, FLT POINT M5 X 20.0	61
-	-	-	-	18024-7	SCR, BTN SKT HD CAP (M4 X 10.0)	60
-	-	-	-	5-18022-2	SCR, HEX HD CAP M4 X 8.0	59
-	-	-	-	-	-	58
-	-	-	-	-	-	57
-	-	-	-	1338685-1	PAWL, FEED	56
-	-	-	-	-	-	55
-	4	4	4	18024-8	SCR, BTN SKT HD CAP (M4 X 12.0)	54
-	2	2	2	1-18023-3	SCR, SKT HD CAP M4 X 16.0	53
-	-	-	-	18030-1	NUT, HEX, REG M3	52
-	-	-	-	811242-5	BUMPER, HOLD DOWN	51
-	-	-	-	690753-2	SPACER, TONKER	50
-	-	-	-	18024-3	SCR, BTN SKT HD CAP (M3 X 10.0)	49
-	-	-	-	1338675-1	CAM, UNIVERSAL PRE FEED	48
-	-	-	-	1338676-1	CAM, UNIVERSAL POST-FEED	47
-	-	-	-	1320999-3	APPLICATOR SUBASSEMBLY, HDI	46
-	-	-	-	690191-1	PLUG, NYLON	45
-	-	-	-	1338660-1	RAM	44
-	-	-	-	-	-	43
-	-	-	-	-	-	42
-	-	-	-	-	-	41
-	-	-	-	2-18024-6	SCR, BTN SKT HD CAP (M8 X 25.0)	40
-	-	-	-	-	-	39
-	-	-	-	690125-1	SHIM SUB-ASSY	38
-	-	-	-	469367-8	SHIM	37
-	-	-	-	879103-3	FINE ADJUST HEAD ASSEMBLY	36
-	-	-	-	-	-	35
-	-	-	-	2-1320934-2	SUPPORT, TERMINAL	34
-	-	-	-	1-18024-0	SCR, BTN SKT HD CAP (M4 X 20.0)	33
-	-	-	-	18027-2	WASHER, FLAT, REG M4	32
-	-	-	-	1-18023-2	SCR, SKT HD CAP M4 X 12.0	31
-	-	-	-	1-1320908-7	SPACER, STRIP GUIDE	30
-	-	-	-	1633073-1	STRIP GUIDE ASSEMBLY	29
-	-	-	-	1-455888-2	SPACER, CRIMPER	28
-	-	-	-	1-22284-0	SPRING, COMPRESSION	27
-	-	-	-	356835-1	LEVER, DRAG RELEASE	26
-	-	-	-	240792-1	DRAG, TERMINAL	25
-	-	-	-	1320928-1	PLATE, STRIP GUIDE	24
-	-	-	-	980371-4	SCR, SKT HD SHLDR 5.0 DIA X 6.0	23
-	-	-	-	690472-2	STRIPPER	22
-	-	-	-	1-18023-1	SCR, SKT HD CAP M4 X 10.0	21
-	-	-	-	18025-2	WASHER, SPRG LOCK, REG M4	20
-	-	-	-	690472-1	STRIPPER	19
-	-	-	-	-	-	18
-	-	-	-	1338684-1	SHEAR HOLDER, FRONT	17
-	-	-	-	-	-	16
-	-	-	-	-	-	15
-	-	-	-	-	-	14
-	-	-	-	-	-	13
-	-	-	-	3-22280-3	SPRING, COMPRESSION	12
-	-	-	-	356885-4	STOP, SHEAR	11
-	-	-	-	1320921-1	SHEAR HOLDER, FRONT, CUT	10
-	-	-	-	462006-1	FLOATING SHEAR, FRONT	9
-	-	-	-	4-1633138-9	ANVIL, COMBINATION	8
-	-	-	-	3-240641-7	SPACER	7
-	-	-	-	-	-	6
-	-	-	-	2-455889-0	DEPRESSOR, SHEAR	5
-	-	-	-	238011-7	BLOCK, CRIMPER SPACER	4
-	-	-	-	1-1633510-1	CRIMPER, INSUL O	3
-	-	-	-	455888-5	SPACER, CRIMPER	2
-	-	-	-	5-568176-2	CRIMPER, WIRE	1

- △ RECOMMENDED SPARE PARTS.
- 2. GREASE RAM, CAM, CAM FOLLOWER AND FEED ROD LIGHTLY.
- △ CERTAIN TERMINALS REQUIRE LUBRICATION. REFER TO THE APPLICATOR INSTRUCTION SHEET FOR MORE INFORMATION.
- 4. LUBRICATE DAILY PER THE APPLICATOR INSTRUCTION SHEET SUPPLIED WITH THE APPLICATOR.
- △ ITEM 53, CUT TO LENGTH AT ASSEMBLY.
- △ WIRE RANGE STATED IS THAT OF THE TERMINAL.
- △ INSULATION RANGE STATED IS THAT OF THE APPLICATOR, TERMINAL INSULATION RANGE IS 0.91-1.52 [0.036-0.060 IN]
- △ WIRE CRIMP DATA SUPPLIED BY TERMINAL MANUFACTURER, ALL OTHER DATA CALCULATED BY TYCO ELECTRONICS UK LTD.

* WARNING
ON INSTALLATION, SET WIRE DISC TO LARGEST WIRE SIZE SETTING. USE OF SETTINGS BELOW MIN. REQUIRED CRIMP HEIGHT SETTING WILL CAUSE DAMAGE TO CRIMP TOOLING.



REV	DATE	BY	APPD	DESCRIPTION	ITEM NO				
-	-	-	-	-	84				
-	-	-	-	-	83				
-	-	-	-	-	82				
-	-	-	-	-	81				
-	-	-	-	-	80				
-	-	-	-	-	79				
-	-	-	-	-	78				
-	-	-	-	-	77				
-	-	-	-	-	76				
-	-	-	-	-	75				
-	-	-	-	-	74				
-77	-76	-72	-71	-6	-2	-1	PART NO	DESCRIPTION	ITEM NO

DIMENSIONS:	TOLERANCES UNLESS OTHERWISE SPECIFIED:	REV	DATE	BY	APPD	DESCRIPTION	ITEM NO
mm [IN]	0 PLC ± 1 PLC ± 3 PLC ± 4 PLC ± ANGLES ±	26	JUN2007	PROUSE	26	JUN2007	PROUSE
MATERIAL:	FINISH:	NAME		NAME		NAME	
-	-	M. CLIFFORD		M. CLIFFORD		M. CLIFFORD	
APPLICATION SPEC		PRODUCT SPEC		APPLICATION SPEC		PRODUCT SPEC	
See Table		See Table		See Table		See Table	
WEIGHT		SIZE		CAGE CODE		DRAWING NO	
-		A1		00779		C=1528818	
CUSTOMER DRAWING		SCALE		SHEET		OF	
-		3:5		1		REV	
-		-		-		A	