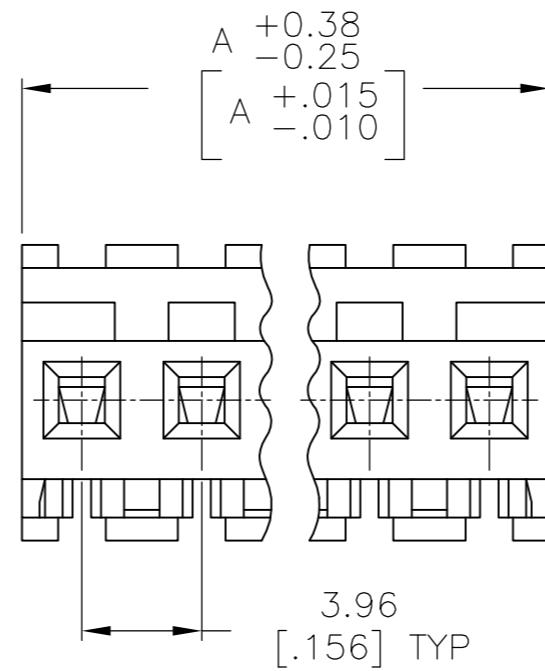
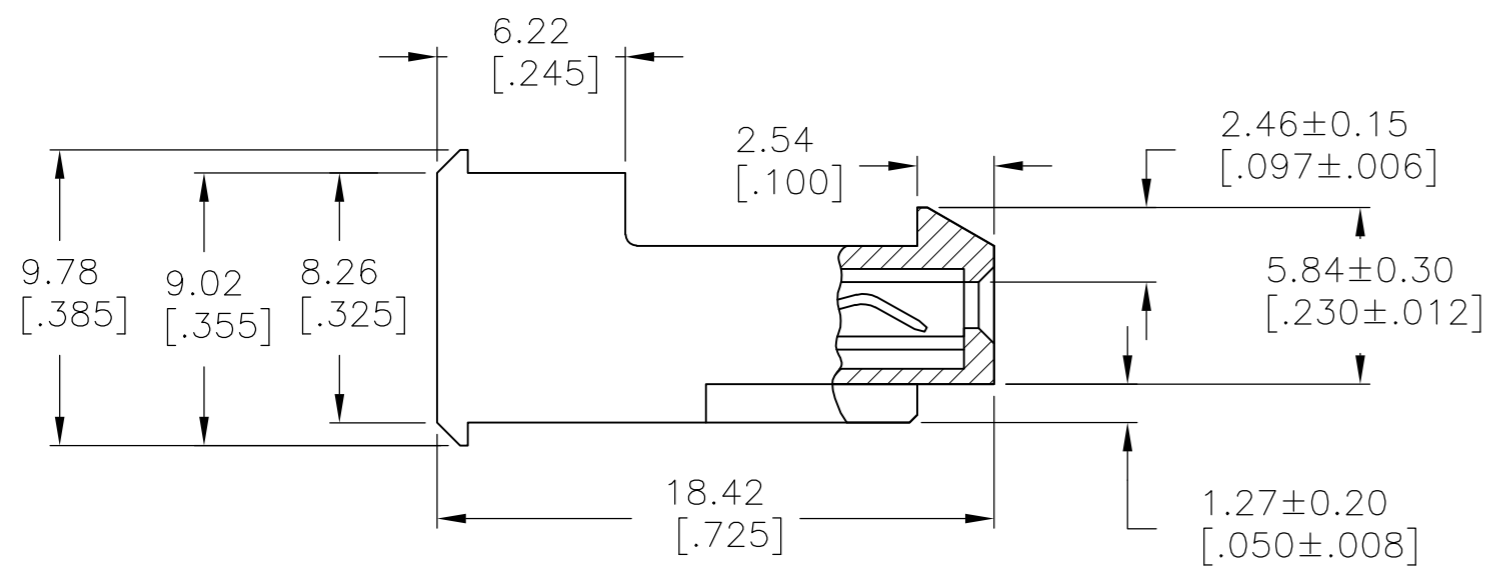
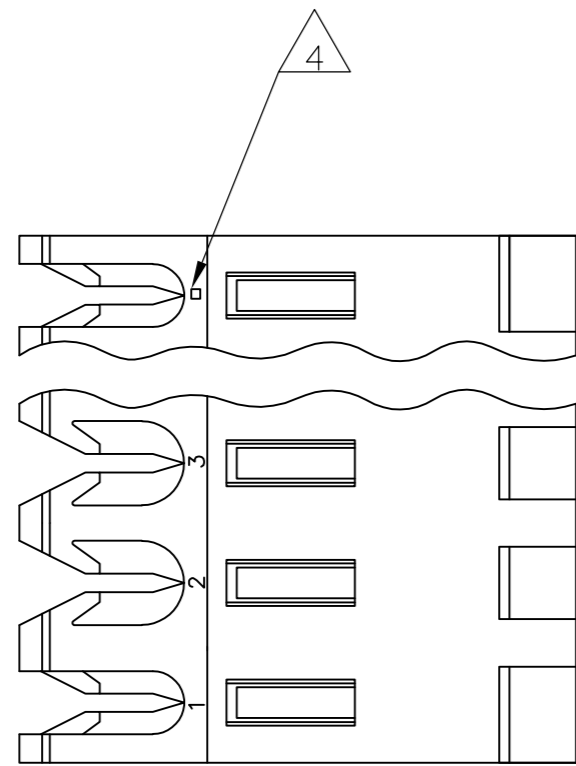


THIS DRAWING IS UNPUBLISHED. RELEASED FOR PUBLICATION  
 © COPYRIGHT - By - ALL RIGHTS RESERVED.

LOC		DIST		REVISIONS			
P	LTR	DESCRIPTION		DATE	DWN	APVD	
CM	00	T		REVISED PER ECO-12-007612	03AUG12	KH SM	



1 MATERIAL: CONNECTOR - NYLON UL94V-2.  
 CONTACTS - 0.30[.012] THICK COPPER ALLOY  
 0.00076[.000030] GOLD THK OR 0.00008[.000003] MIN THK  
 GOLD FLASH OVER 0.00068[.000027] THK PALLADIUM NICKEL,  
 PER TE CONNECTIVITY'S DISCRETION. IN CONTACT  
 AREA WITH BRIGHT TIN-LEAD FOR 641229-2 THRU  
 2-641229-4, MATTE WHISKER MITIGATED TIN FOR  
 3-641229-2 THRU 5-641229-4 OVER NICKEL UNDERPLATE.

2 CONTACTS ACCEPT 22 AWG WIRE WITH 2.41[.095] MAX INSULATION DIAMETER.

3 CONTACTS MUST ACCEPT 1.14±0.03 [.045±.001] SQUARE POST AND REMAIN LOCKED IN POSITION.

4 IDENTIFICATION NUMBER FOR LAST CIRCUIT MAY NOT APPEAR ON ALL ASSEMBLIES.

5 DIMENSIONS IN BRACKETS ARE IN INCHES.

6 HOUSING FEATURES ARE: FEED-THRU WITH LOCKING RAMP.

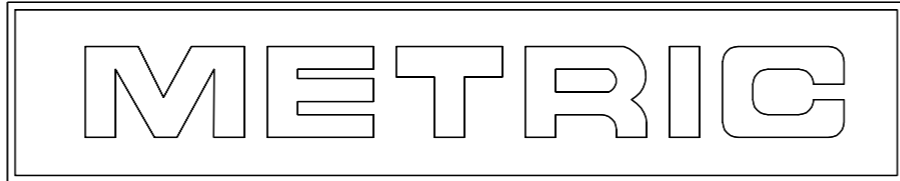
7 OBSOLETE PARTS: OBSOLETE CIS STREAMLINING PER D.RENAUD/D.SINISI

8 RED COLOR STRIPE ON HOUSING (NOT SHOWN) MAY RUN DOWN BETWEEN RIBS.

DIM A	NO OF CIRCUITS	PART NO
95.10 [3.744]	24	5-641229-4
91.14 [3.588]	23	5-641229-3
87.17 [3.432]	22	5-641229-2
83.21 [3.276]	21	5-641229-1
79.25 [3.120]	20	5-641229-0
75.29 [2.964]	19	4-641229-9
71.32 [2.808]	18	4-641229-8
67.36 [2.652]	17	4-641229-7
63.40 [2.496]	16	4-641229-6
59.44 [2.340]	15	4-641229-5
55.47 [2.184]	14	4-641229-4
51.51 [2.028]	13	4-641229-3
47.55 [1.872]	12	4-641229-2
43.59 [1.716]	11	4-641229-1
39.62 [1.560]	10	4-641229-0
35.66 [1.404]	9	3-641229-9
31.70 [1.248]	8	3-641229-8
27.74 [1.092]	7	3-641229-7
23.77 [.936]	6	3-641229-6
19.81 [.780]	5	3-641229-5
15.85 [.624]	4	3-641229-4
11.89 [.468]	3	3-641229-3
7.92 [.312]	2	3-641229-2
95.10 [3.744]	24	2-641229-4
91.14 [3.588]	23	2-641229-3
87.17 [3.432]	22	2-641229-2
83.21 [3.276]	21	2-641229-1
79.25 [3.120]	20	2-641229-0
75.29 [2.964]	19	1-641229-9
71.32 [2.808]	18	1-641229-8
67.36 [2.652]	17	1-641229-7
63.40 [2.496]	16	1-641229-6
59.44 [2.340]	15	1-641229-5
55.47 [2.184]	14	1-641229-4
51.51 [2.028]	13	1-641229-3
47.55 [1.872]	12	1-641229-2
43.59 [1.716]	11	1-641229-1
39.62 [1.560]	10	1-641229-0
35.66 [1.404]	9	641229-9
31.70 [1.248]	8	641229-8
27.74 [1.092]	7	641229-7
23.77 [.936]	6	641229-6
19.81 [.780]	5	641229-5
15.85 [.624]	4	641229-4
11.89 [.468]	3	641229-3
7.92 [.312]	2	641229-2

7 SUPERCEDED

7 SUPERCEDED



THIS DRAWING IS A CONTROLLED DOCUMENT.

DIMENSIONS: mm [INCHES]	TOLERANCES UNLESS OTHERWISE SPECIFIED:	DWN J. HUFFMAN 08 MAR 95	TE Connectivity
0 PLC ± -	1 PLC ± -	CHK R. SWING 08 MAR 95	
2 PLC ± -	3 PLC ± 0.13 [.005]	APVD D. CLARK 08 MAR 95	MTA-156 CONNECTOR ASSEMBLY, 22 AWG, STANDARD
4 PLC ± -	ANGLES ± 0° 30'	PRODUCT SPEC 108-1051	
MATERIAL 1	FINISH 1	APPLICATION SPEC 114-1020	SIZE A2
CUSTOMER DRAWING		WEIGHT -	CAGE CODE 00779
		SCALE 4:1	DRAWING NO C-641229
		SHEET 1 OF 1	RESTRICTED TO -
		REV T	