

THIS DRAWING IS UNPUBLISHED. RELEASED FOR PUBLICATION  
 © COPYRIGHT BY TYCO ELECTRONICS CORPORATION. ALL INTERNATIONAL RIGHTS RESERVED.

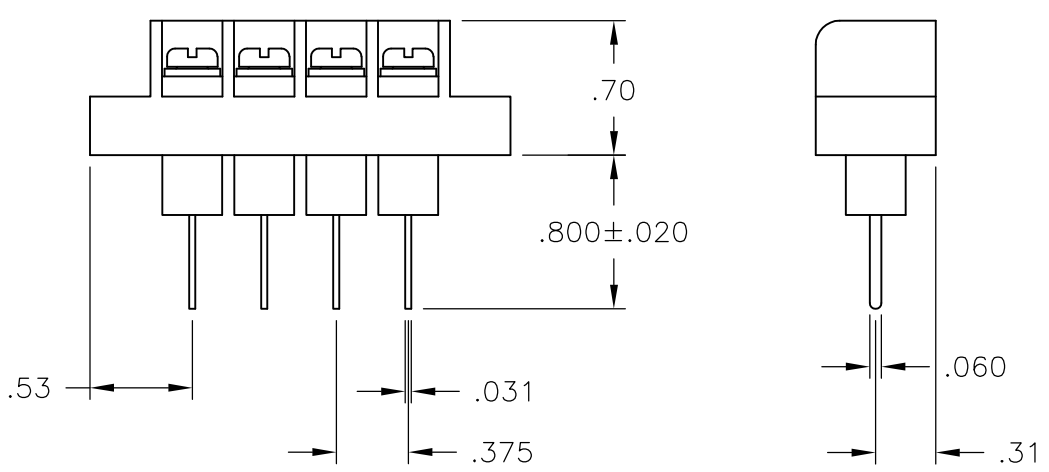
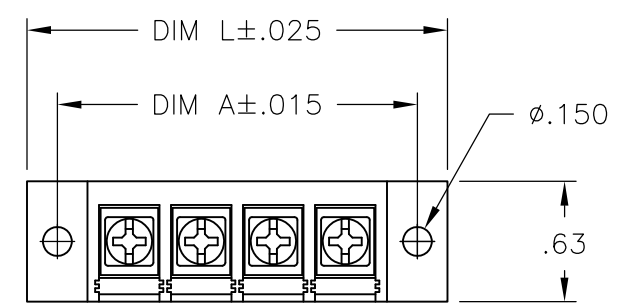
LOC	DIST	REVISIONS					
FT	0	P	LTR	DESCRIPTION	DATE	DWN	APVD
			A	REVISED PER ECO-10-013203	25JUN10	HMR	CR

MATERIALS:  
 HOUSING: THERMOPLASTIC, UL94V-0, BLACK.  
 TERMINALS: BRIGHT TIN OVER COPPER ALLOY.  
 SCREWS: #6-32 STEEL, ZINC PLATING W/ CLEAR CHROMATE.

ELECTRICAL:  
 CURRENT RATING: 20A.  
 OPERATING VOLTAGE: 300V.  
 WIRE RANGE: 12-22 AWG.

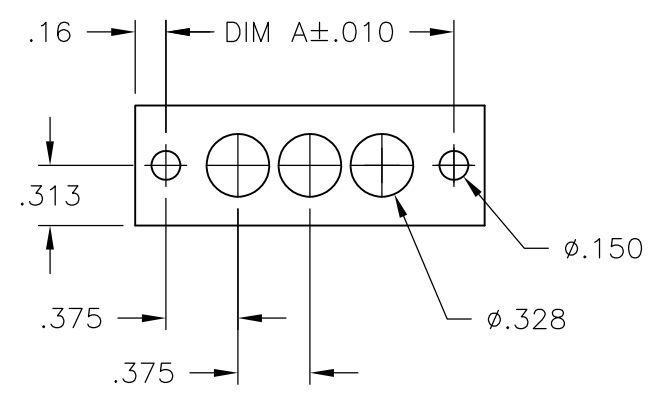
MECHANICAL:  
 RECOMMENDED TORQUE: 7 IN-LB.  
 OPERATING TEMP.: 105°C MAX.

1 TURRET IS FILLED WITH EPOXY.



7.439	7.125	18	BC6-W308-18	1-1776008-8
7.064	6.750	17	BC6-W308-17	1-1776008-7
6.689	6.375	16	BC6-W308-16	1-1776008-6
6.314	6.000	15	BC6-W308-15	1-1776008-5
5.939	5.625	14	BC6-W308-14	1-1776008-4
5.564	5.250	13	BC6-W308-13	1-1776008-3
5.189	4.875	12	BC6-W308-12	1-1776008-2
4.814	4.500	11	BC6-W308-11	1-1776008-1
4.439	4.125	10	BC6-W308-10	1-1776008-0
4.064	3.750	9	BC6-W308-09	1776008-9
3.689	3.375	8	BC6-W308-08	1776008-8
3.314	3.000	7	BC6-W308-07	1776008-7
2.939	2.625	6	BC6-W308-06	1776008-6
2.564	2.250	5	BC6-W308-05	1776008-5
2.189	1.875	4	BC6-W308-04	1776008-4
1.814	1.500	3	BC6-W308-03-286	2-1776008-0
1.814	1.500	3	BC6-W308-03	1776008-3
1.439	1.125	2	BC6-W308-02-285	1-1776008-9
1.439	1.125	2	BC6-W308-02	1776008-2

SEE FIGURE 1  
 SEE FIGURE 1



RECOMMENDED PCB LAYOUT

THIS DRAWING IS A CONTROLLED DOCUMENT.		DWN	S SCHLEGEL	1/14/05	Tyco Electronics Corporation Harrisburg, PA 17105-3608			
DIMENSIONS: INCHES		CHK	S. YODER	1/14/05				
TOLERANCES UNLESS OTHERWISE SPECIFIED:		APVD	S. YODER	1/14/05	NAME			
0 PLC ± - 1 PLC ± - 2 PLC ± .01 3 PLC ± .005 4 PLC ± - ANGLES ± -		PRODUCT SPEC		BC6-W308-XX ASSEMBLY				
MATERIAL		APPLICATION SPEC		SIZE		CAGE CODE	DRAWING NO	RESTRICTED TO
FINISH		WEIGHT		A3		00779	C-1776008	-
CUSTOMER DRAWING				SCALE	NTS	SHEET	1 OF 1	REV
								A