

ATLANTIC VERSION TERMINATOR INTERFACE ADAPTER	PART NUMBER	REVISION	DESCRIPTION	FEED TYPE	APPLICATOR STYLE CONVERSION CHART						
					CONVERT TO	PART NUMBERS REQUIRED					
						PNEUMATIC FEED	2119950-1	1338685-1	5-18022-5	2119641-1	2119799-1
2151911-1	B	FINE CRIMP HEIGHT ADJUST	MECHANICAL	SERVO LATCH PLATE	2119951-1	-	8-2151911-5	1901094-3	2-1752354-6	2168400-6 (QUANTITY 2)	
				SMART APPLICATOR	2161326-1	-	8-2151911-4	-	-	-	
2151911-2	B	FINE CRIMP HEIGHT ADJUST	PNEUMATIC	MECHANICAL FEED	2119949-1	1338685-1	5-18022-5	2119653-1	-	-	
				SERVO LATCH PLATE	2119951-1	-	8-2151911-5	1901094-3	2-1752354-6	2168400-6 (QUANTITY 2)	
2151911-5	B	FINE CRIMP HEIGHT ADJUST	SERVO LATCH PLATE	MECHANICAL FEED	2119949-1	1338685-1	5-18022-5	2119653-1	-	-	
				PNEUMATIC FEED	2119950-1	1338685-1	5-18022-5	2119641-1	2119799-1	2063440-1	
2151911-6	B	NON-CRIMP HEIGHT ADJUST	SERVO LATCH PLATE	-	-	-	-	-	-	-	
2151911-7	B	FINE CRIMP HEIGHT ADJUST	NONE	-	-	-	-	-	-	-	
7-2151911-7	A	CRIMP TOOLING KIT	-	-	-	-	-	-	-	-	

APPLICATOR DATA		
CRIMP	SIZE	TYPE
WIRE	2.03 mm [.080]	F
INSUL	4.06 mm [.160]	O

APPLICATOR INSTRUCTIONS 408-10389

TERMINAL DATA: TE TERMINAL		TE CRIMP SPECIFICATION	
TERMINAL NAME: AMP MCP 2.8K FLAT TYPE RECEPTACLE			
WIRE STRIP LENGTH	INSULATION DIAMETER RANGE		
3.70-4.30 mm [.146-.169 IN]	Ø1.40-2.70 mm [.055-.106 IN]		
TERMINAL APPLICATION SPECIFICATION	(C)114-18387 Rev E		
TERMINALS APPLIED	(A)114-18050		

TE TERMINAL	TE SEAL	CABLE DIAMETER
(C) 1241394-1	(C) 1241394-3	(C) 963294-1
(C) 1241394-2	(C) 963293-1	Ø2.0-2.7

TERMINAL DATA: TE TERMINAL		TE CRIMP SPECIFICATION	
TERMINAL NAME: JUNIOR-POWER-TIMER CONTACT A			
WIRE STRIP LENGTH	INSULATION DIAMETER RANGE		
4.20-4.80 mm [1.65-.189 IN]	Ø1.40-2.70 mm [.055-.106 IN]		
TERMINAL APPLICATION SPECIFICATION	(A)114-18050		
TERMINALS APPLIED	(B)114-18051 Rev E		

TE TERMINAL	TE SEAL	CABLE DIAMETER
(A) 964286-1	(A) 6-964286-6	(B) 963294-1
(A) 964286-2	(B) 1-964300-3	(B) 963293-1
(A) 1-964286-1	(B) 2-964300-1	Ø2.0-2.7
(A) 2-964286-1	(B) 4-964300-1	
(A) 4-964286-1		

WIRE SIZE	CRIMP HEIGHT mm [INCH]	CRIMP HEIGHT REFERENCE SETTING
1.00mm2	1.20+/-0.05 [1.047+/-0.002]	8.5
0.75mm2	1.18+/-0.05 [1.046+/-0.002]	8.7
0.50mm2	1.15+/-0.05 [1.045+/-0.002]	9.1

- 1 RECOMMENDED SPARE PARTS
- 2 GREASE BEARING SURFACES LIGHTLY
- 3 LUBRICATE DAILY PER THE APPLICATOR INSTRUCTION SHEET SUPPLIED WITH THE APPLICATOR.
- 4 APPLICATOR SPECIFIC DATA TO BE ENTERED INTO BLANK MEMORY CHIP AT ASSEMBLY. SEE BELOW FOR PART NUMBER:  
 MECHANICAL FEED WITH "SMART APPLICATOR" CONVERSION: 8-2151911-4  
 PNEUMATIC FEED WITH "SMART APPLICATOR" CONVERSION: 8-2151911-4  
 SERVO FEED WITH "FINE CRIMP HEIGHT ADJUST": 8-2151911-5  
 SERVO FEED WITH "NON-CRIMP HEIGHT ADJUST": 8-2151911-6
- 5 ADJUSTMENT OF THE STRIPPER MAY BE REQUIRED WHEN MOVING THE APPLICATOR BETWEEN BENCH AND LEADMAKER APPLICATIONS.
- 6 APPLY PART NUMBER 1-23419-5 LOCTITE TO THREADS OF ITEMS 62. APPLY PART NUMBER 2-23419-6 LOCTITE TO THREADS OF ITEMS 242. FOR -6 ONLY APPLY PART NUMBER 1-23419-5 LOCTITE TO THREADS OF ITEM 37.
- 7 GREASE THREADS, GROOVE AND O-RING ON ITEMS 35 & 252.
- 8 MAGNET, ITEM 166 MUST BE ORIENTED CORRECTLY IN ORDER TO PROPERLY ACTUATE THE COUNTER.
- 9 CRIMP HEIGHT REFERENCE SETTING WAS THE SETTING USED WHEN THE APPLICATOR WAS QUALIFIED AT THE FACTORY. ADJUSTMENT MAY BE NECESSARY WHEN RUNNING APPLICATOR IN THE FIELD.
- 10 SPARE FEED CAM STORAGE LOCATION REFER TO INSTRUCTION SHEET FOR ADDITIONAL INFORMATION.
- 11 TO CONVERT THE APPLICATOR TO A NON-CARRIER CUTTING STYLE, REMOVE ITEM 13 AND ATTACH TO THE LOCATION ON THE BACK SIDE OF THE HOUSING. REFER TO INSTRUCTION SHEET FOR ADDITIONAL INFORMATION.
- 12 WHEN ASSEMBLING A NON CRIMP HEIGHT ADJUST APPLICATOR (-6) USE SHIMS FROM ITEM 260 TO ACHIEVE A NOMINAL SHIM HEIGHT OF 4.60.
- 13 THIS APPLICATOR APPLIES TERMINAL WITH A SEAL.
- 14 APPLY TORO-SEAL IN ALLEN SOCKET TO FILL HOLE AFTER FLAT HD HAS BEEN ADJUSTED TO CORRECT HEIGHT AT QUALIFICATION. APPLY #1-23419-5 LOC-TITE TO THREADS.

**\*WARNING**  
 ON INSTALLATION, SET WIRE DISC, ITEM 40 TO LARGEST WIRE SIZE SETTING. USE OF SETTINGS BELOW MINIMUM REQUIRED CRIMP HEIGHT SETTING WILL CAUSE DAMAGE TO CRIMP TOOLING.

THIS APPLICATOR IS SEPCIFIC FOR USE IN A STRIPPER SEAL TERMINATING UNIT.

ITEM NO	DESCRIPTION	ITEM NO
260	APPLICATOR SHIM PACK	260
252	O-RING, .676 ID, .070 DIA. MAT.	252
250	PUSH ROD, AIR FEED	250
249	BUSHING, LCH5-12, MISUMI	249
248	FEED CAM, AIR FEED	248
247	DETENT PIN	247
246	SPRING, COMPRESSION	246
-77	PART NO	-77

**ATLANTIC VERSION**  
 Shown on sheets 1 of 4 & 2 of 4  
 (Pacific version shown on sheets 3 of 4 & 4 of 4)

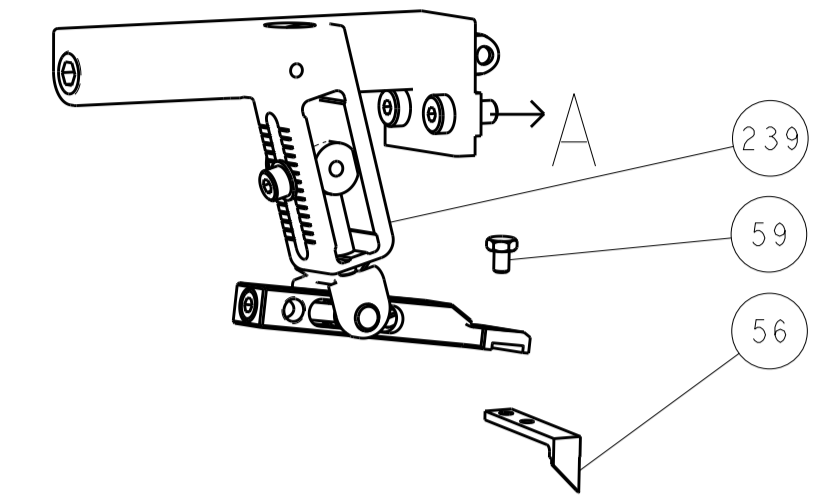
SET UP GAUGE	LOC	DIST	REVISIONS			
2119599-1	A	66	REV	DATE	BY	APPV
			A	RELEASED	13MAY2013	GH
			A1	ECR-13-014296	11SEP2013	CC
			A2	ECR-15-001855	05FEB2015	KH
			B	ECR-16-014424	12OCT2016	YY

REV	DATE	BY	APPV	DESCRIPTION	ITEM NO
-	-	-	-	RAM, AMP STYLE, SIDE FEED, NON-ADJ.	245
-	1	1	1	CAM, SNAIL, INSULATION ADJUSTMENT	244
-	1	1	1	WASHER, WAVE SPRING, CREST-TO-CREST	243
-	1	1	1	RETAINER, INSULATION DIAL	242
-	1	1	1	SCR, SKT HD CAP M3 X 4.0	241
-	-	2	2	SHCS, LOW HEAD, RoHS, M5 X 16	240
-	-	-	-	MECHANICAL FEED ASSEMBLY	239
-	-	-	-	AIR FEED MODULE	238
-	-	1	1	TAG, IDENTIFICATION	213
-	-	1	1	SPACER, FEEDER	198
-	1	1	1	STRIPPER, SIDE FEED	182
-	1	1	1	NUT, HEX, REG, RoHS, M3.5	181
-	1	1	1	STANDOFF, HOLD-DOWN	180
-	1	1	1	PIN, SLOTTED SPRING 3.0 X 20.0	177
-	1	1	1	SPRING, COMPRESSION	176
-	1	1	1	GUIDE PIN, HOLDDOWN	175
-	1	1	1	GUIDE PIN, HOLDDOWN	174
-	-	-	-	RING, RETAIN, EXTERN, 3/16 CRESCENT	172
-	1	1	1	MAGNET, RARE EARTH HIGH ENERGY	166
-	REF	REF	REF	COUNTER, MAGNETIC	164
-	-	-	-	SPRING, FEED FINGER	163
-	-	-	-	PIN, RETAIN, GRVD, 3/16 X .854	137
-	-	-	-	HOLDER, FEED FINGER, AF	136
-	-	REF	REF	MEMORY CHIP, PROGRAMMED	135
-	-	1	1	SERVO FEED LATCH ASM	133
-	1	1	1	WASHER, FLAT, REG M4	119
-	-	REF	REF	FEED FINGER ASSEMBLY, SF	117
-	1	1	1	SPACER, CRIMPER	82
-	1	1	1	DOCUMENTATION PACKAGE	71
-	1	-	-	TAG, IDENTIFICATION	67
-	2	2	2	SCREW, DRIVE, RH, RoHS, 2 x .188	66
-	1	-	-	LIMITER, ADJUSTMENT BOLT	63
-	3	-	-	SCR, SET, SOC, CONE POINT, M3 x 4.0	62
-	1	1	1	SCR, BHSC, RoHS (M4 X 8)	60
-	-	-	-	SCR, HEX HD CAP, M4 X 6.0	59
-	1	1	1	SCR, FLT SKT HD CAP M3 X 10.0	57
-	-	-	-	PAWL, FEED	56
-	4	4	4	SHCS, LOW HEAD, RoHS, M4 X 12	54
-	2	2	2	SCR, SKT HD CAP, RoHS, M4 X 12.0	53
-	1	1	1	NUT, HEX, REG, RoHS, M3	52
-	1	1	1	BUMPER, HOLD DOWN	51
-	1	1	1	SPACER, TONKER	50
-	-	-	-	SCR, SKT HD CAP M4 X 6.0	49
-	-	-	-	FEED CAM, PRE FEED	48
-	-	-	-	FEED CAM, POST FEED	47
-	1	1	1	APPLICATOR BASIC ASSEMBLY, SF	46
-	1	-	-	RAM, AMP STYLE, SIDE FEED	44
-	1	1	1	SCR, BHSC, RoHS (M8 X 25)	41
-	1	-	-	DISC, NUMBERED FA WIRE ADJUSTMENT	40
-	1	-	-	APPLICATOR SHIM PACK	39
-	1	1	1	RAM WASHER, PRECISION	38
-	1	1	1	FA HEAD, ATLANTIC STYLE	37
-	1	-	-	BOLT, ADJUSTMENT	35
-	1	1	1	SUPPORT, TERMINAL	34
-	2	2	2	SCR, BHSC, RoHS (M4 X 20)	33
-	1	1	1	HEX HEAD, FLANGED, M5 x 8mm LONG	32
-	1	1	1	SPACER, STRIP GUIDE	30
-	1	1	1	ASSEMBLY, STRIP GUIDE	29
-	1	1	1	SPACER, CRIMPER	28
-	1	1	1	STRIP GUIDE	24
-	1	1	1	INSERT, SHEAR	13
-	1	1	1	SPRING, COMPRESSION	12
-	1	1	1	STOP, SHEAR	11
-	1	1	1	SHEAR HOLDER, FRONT	10
-	1	1	1	FLOATING SHEAR, FRONT	9
-	1	1	1	ANVIL, COMBINATION	8
-	1	1	1	SPACER	7
-	-	-	-	-	6
-	1	1	1	DEPRESSOR, SHEAR	5
-	1	1	1	BLOCK, CRIMPER SPACER	4
-	1	1	1	CRIMPER, INSULATION O	3
-	1	1	1	SPACER, CRIMPER	2
-	1	1	1	CRIMPER, WIRE PREMIUM	1
-77	-7	-6	-5	PART NO	-77

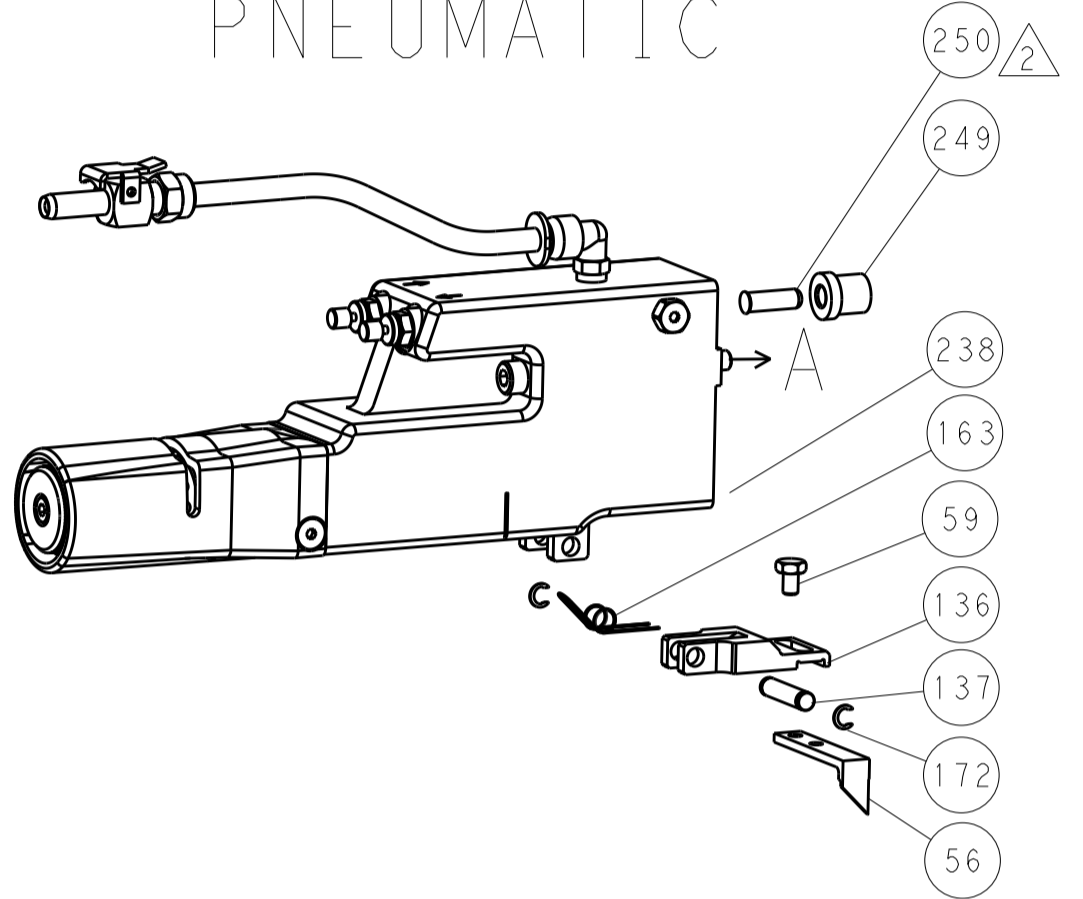
DIMENSIONS: mm 	TOLERANCES UNLESS OTHERWISE SPECIFIED: 0 PLC ± 1 PLC ± 2 PLC ± 3 PLC ± 4 PLC ± ANGLES ± FINISH	DWN: HOFFNER 18MAR2013 CHK: T. ELBIN 19MAR2013 APPV: T. ELBIN 19MAR2013 PRODUCT SPEC APPLICATION SPEC WEIGHT MATERIAL	NAME: Ocean Side Feed Applicator SIZE: A1 CAGE CODE: 00779 DRAWING NO: C-2151911 RESTRICTED TO: B SCALE: 1:2 SHEET: 1 of 4 REV: B
-----------------------	---	---	--

LOC	DIST	REV	DATE	BY	APPV
A	66				

### FEED TYPE MECHANICAL



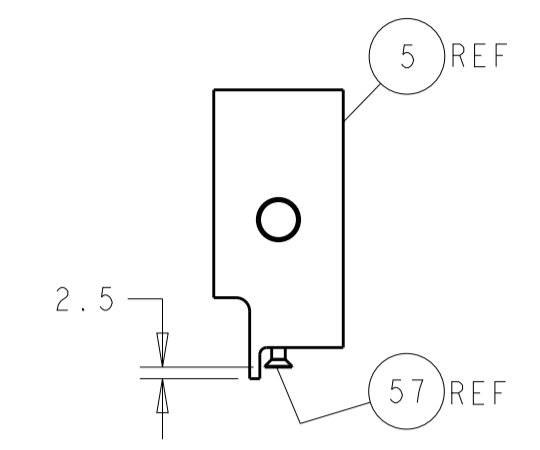
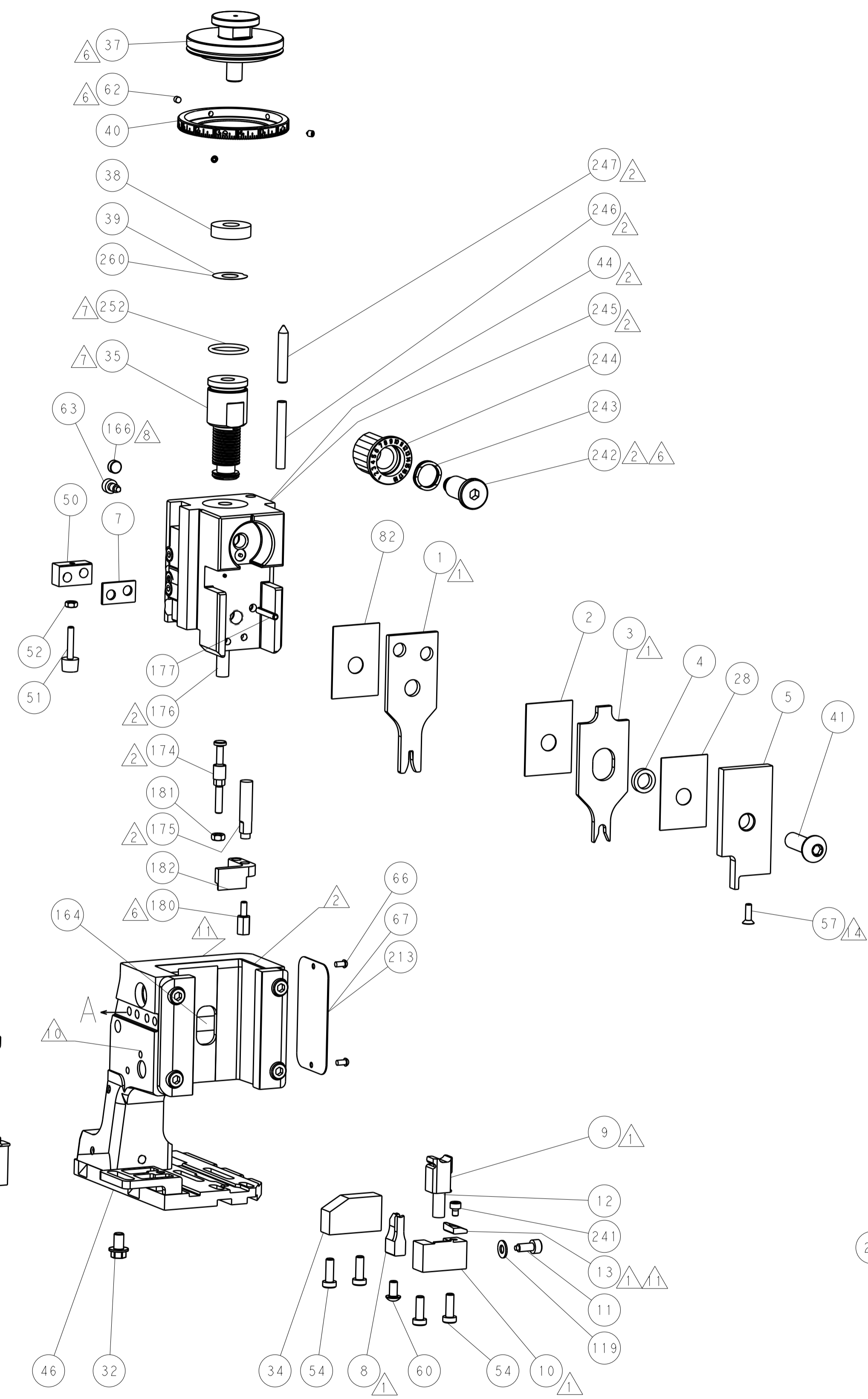
### PNEUMATIC



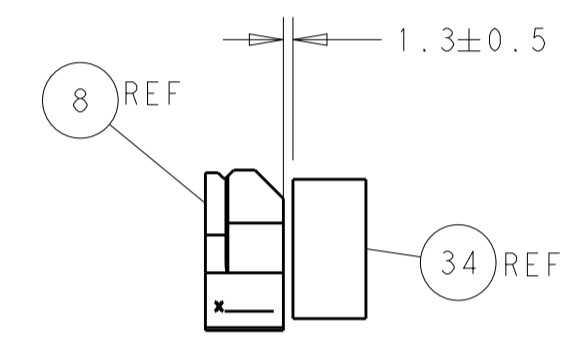
### SERVO LATCH PLATE



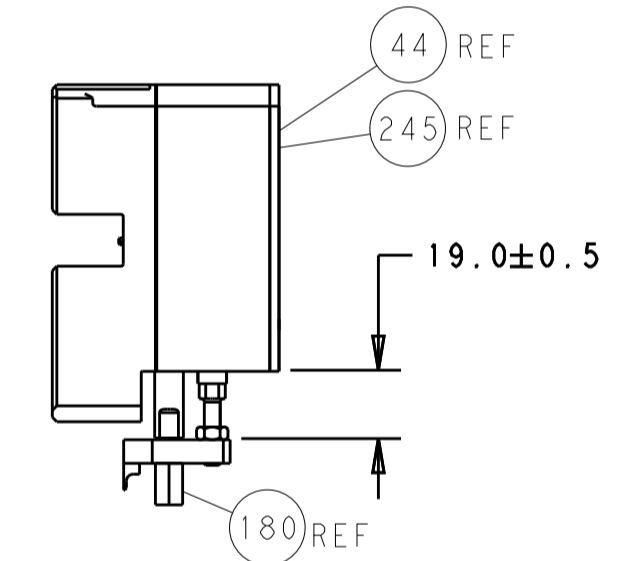
### CAM POSITIONS



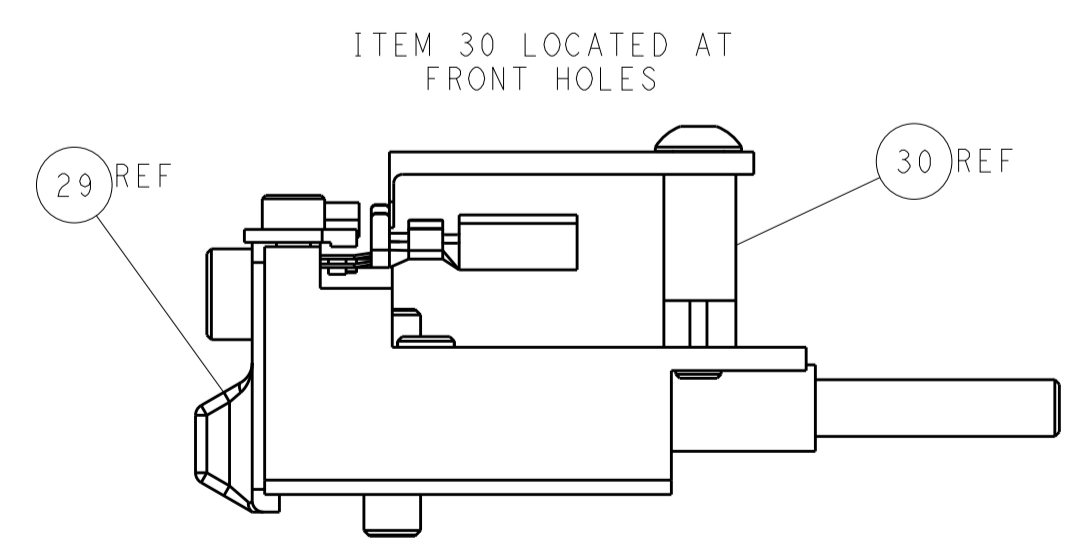
SHEAR DEPRESSOR DETAIL



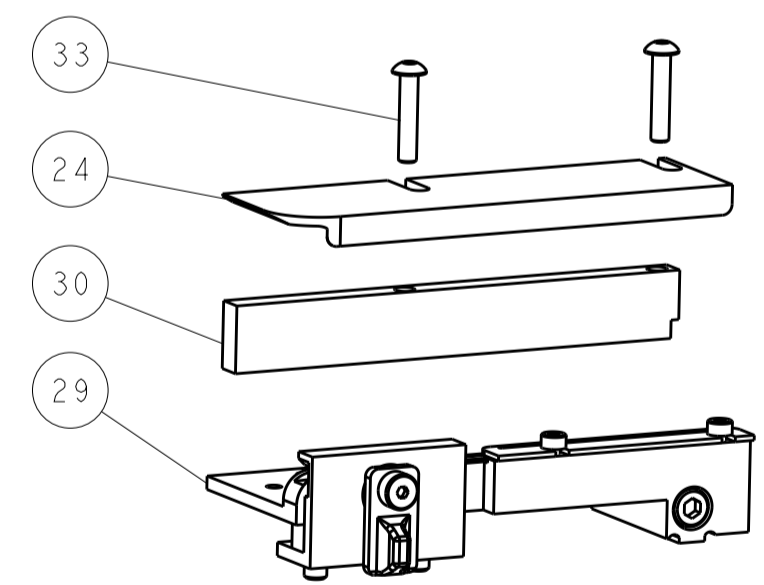
TERMINAL SUPPORT LOCATION



HOLDDOWN SET-UP



FEED TRACK POSITION GUIDE BY INSULATION BARREL



**ATLANTIC VERSION**  
 Shown on sheets 1 of 4 & 2 of 4  
 (Pacific version shown on sheets 3 of 4 & 4 of 4)

DIMENSIONS:		TOLERANCES UNLESS OTHERWISE SPECIFIED:		DWG: HOFFNER 18MAR2013		TE Connectivity	
mm	0 PLC ±	1 PLC ±	2 PLC ±	3 PLC ±	4 PLC ±	5 PLC ±	Harrisburg, PA 17105-3608
MATERIAL:		FINISH:		CHK: T. ELBIN 19MAR2013		NAME: Ocean Side Feed Applicator	
				APVD: T. ELBIN 19MAR2013		SIZE: CAGE CODE: DRAWING NO: A1 00779 ©=2151911	
				PRODUCT SPEC:		RESTRICTED TO:	
				APPLICATION SPEC:		Customer Accessible Production Drawing	
				WEIGHT:		SCALE: 1:2 SHEET 2 OF 4 REV B	

Table with columns: PART NUMBER, REVISION, DESCRIPTION, FEED TYPE, CONVERT TO, PART NUMBERS REQUIRED. Includes a diagram of the Pacific Version Terminator Interface Adapter.

APPLICATOR DATA table with columns: CRIMP, SIZE, TYPE. Includes APPLICATOR INSTRUCTIONS 408-10389.

Terminal Data: TE Terminal TE Crimp Specification table. Includes WIRE STRIP LENGTH, INSULATION DIAMETER RANGE, and TERMINALS APPLIED.

Terminal Data: TE Terminal TE Crimp Specification table. Includes WIRE STRIP LENGTH, INSULATION DIAMETER RANGE, and TERMINALS APPLIED.

WIRE SIZE, CRIMP HEIGHT, CRIMP HEIGHT REFERENCE SETTING table.



- RECOMMENDED SPARE PARTS
GREASE BEARING SURFACES LIGHTLY
LUBRICATE DAILY PER THE APPLICATOR INSTRUCTION SHEET SUPPLIED WITH THE APPLICATOR.
APPLICATOR SPECIFIC DATA TO BE ENTERED INTO BLANK MEMORY CHIP AT ASSEMBLY. SEE BELOW FOR PART NUMBER: MECHANICAL FEED WITH "SMART APPLICATOR" CONVERSION: 8-2151911-4 PNEUMATIC FEED WITH "SMART APPLICATOR" CONVERSION: 8-2151911-4 SERVO FEED WITH "FINE CRIMP HEIGHT ADJUST": 8-2151911-5
ADJUSTMENT OF THE STRIPPER MAY BE REQUIRED WHEN MOVING THE APPLICATOR BETWEEN BENCH AND LEADMAKER APPLICATIONS.
APPLY PART NUMBER 1-23419-5 LOCTITE TO THREADS OF ITEMS 62. APPLY PART NUMBER 2-23419-6 LOCTITE TO THREADS OF ITEMS 242.
GREASE THREADS, GROOVE AND O-RING ON ITEMS 139 & 152.
MAGNET MUST BE ORIENTED CORRECTLY IN ORDER TO PROPERLY ACTUATE THE COUNTER.
CRIMP HEIGHT REFERENCE SETTING WAS THE SETTING USED WHEN THE APPLICATOR WAS QUALIFIED AT THE FACTORY. ADJUSTMENT MAY BE NECESSARY WHEN RUNNING APPLICATOR IN THE FIELD.
SPARE FEED CAM STORAGE LOCATION REFER TO INSTRUCTION SHEET FOR ADDITIONAL INFORMATION.
TO CONVERT THE APPLICATOR TO A NON-CARRIER CUTTING STYLE, REMOVE ITEM 13 AND ATTACH TO THE LOCATION ON BACK SIDE OF THE HOUSING. REFER TO INSTRUCTION SHEET FOR ADDITIONAL INFORMATION.
THIS APPLICATOR APPLIES TERMINAL WITH A SEAL.
APPLY TORO-SEAL IN ALLEN SOCKET TO FILL HOLE AFTER FLAT HD HAS BEEN ADJUSTED TO CORRECT HEIGHT AT QUALIFICATION. APPLY #1-23419-5 LOC-TITE TO THREADS.

\*WARNING ON INSTALLATION, SET WIRE DISC, ITEM 40 TO LARGEST WIRE SIZE SETTING. USE OF SETTINGS BELOW MINIMUM REQUIRED CRIMP HEIGHT SETTING WILL CAUSE DAMAGE TO CRIMP TOOLING.

THIS APPLICATOR IS SPECIFIC FOR USE IN A STRIPPER SEAL TERMINATING UNIT.

Table with columns: PART NO, DESCRIPTION, ITEM NO. Lists various parts like FINE ADJUST HEAD ASM, PUSH ROD, BUSHING, SPRING, CAM, etc.

PACIFIC VERSION Shown on sheets 3 of 4 & 4 of 4 (Atlantic version shown on sheets 1 of 4 & 2 of 4)

SET UP GAUGE 2119599-1, REVISIONS table with columns: P, LTM, DESCRIPTION, DATE, DWN, APVD.

Large table listing various components and their quantities, including WASHER, RETAINER, SCR, SHCS, MECHANICAL FEED ASSEMBLY, TAG, IDENTIFICATION, etc.

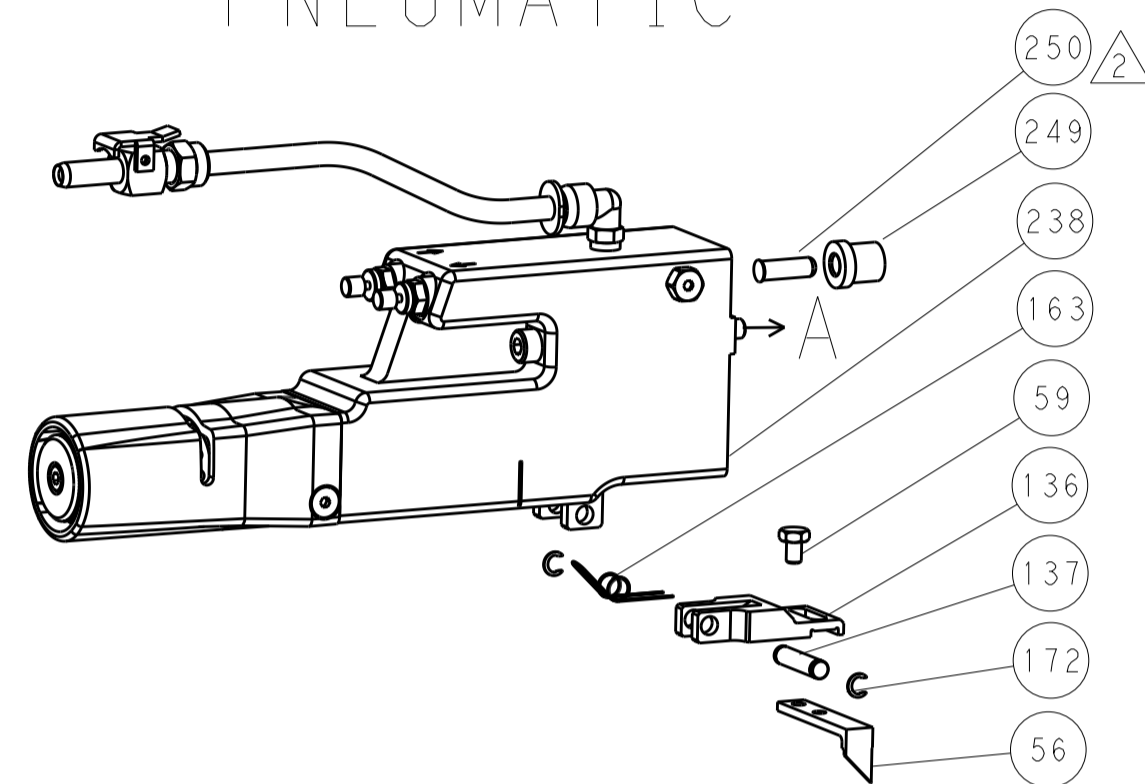
Product specification block including DIMENSIONS, TOLERANCES UNLESS OTHERWISE SPECIFIED, MATERIAL, FINISH, WEIGHT, SCALE, SHEET 3 OF 4, and STE logo.

LOC		DIST		REVISIONS			
A	66	P	LTM	DESCRIPTION	DATE	OWN	APVD
		-		SEE SHEET 1			

# FEED TYPE MECHANICAL



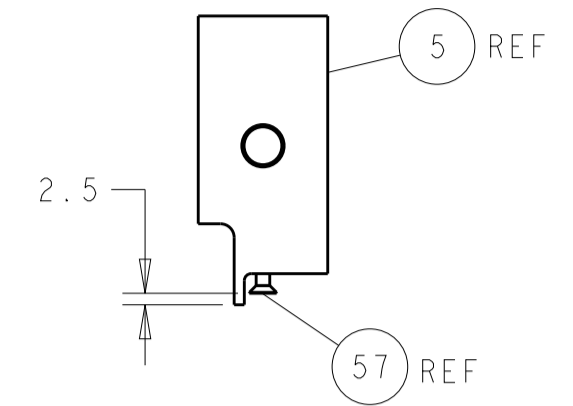
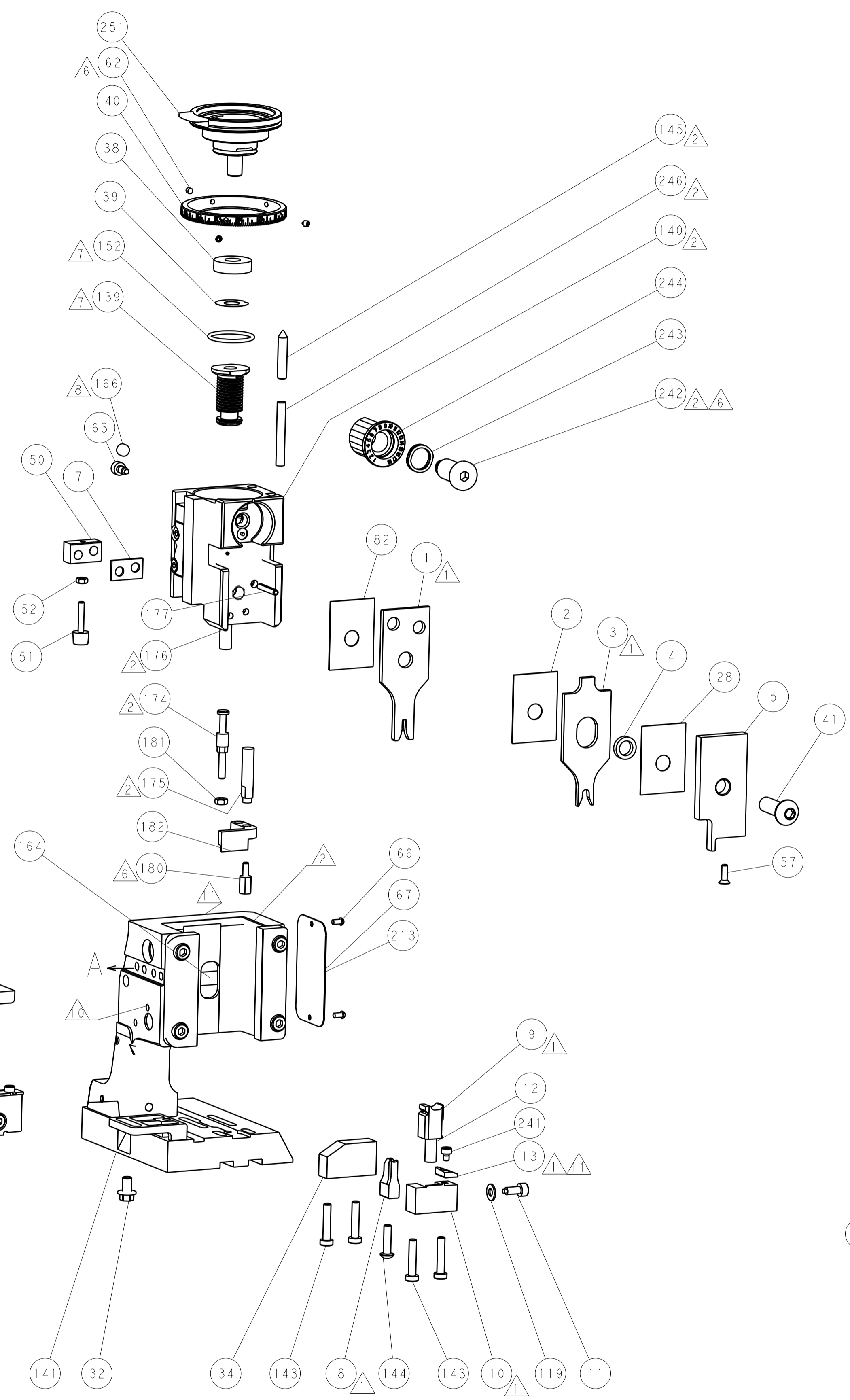
# PNEUMATIC



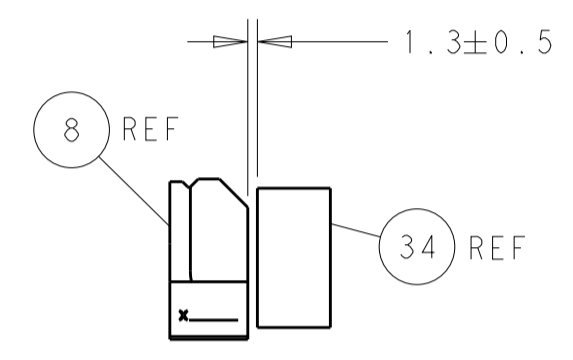
# SERVO LATCH PLATE



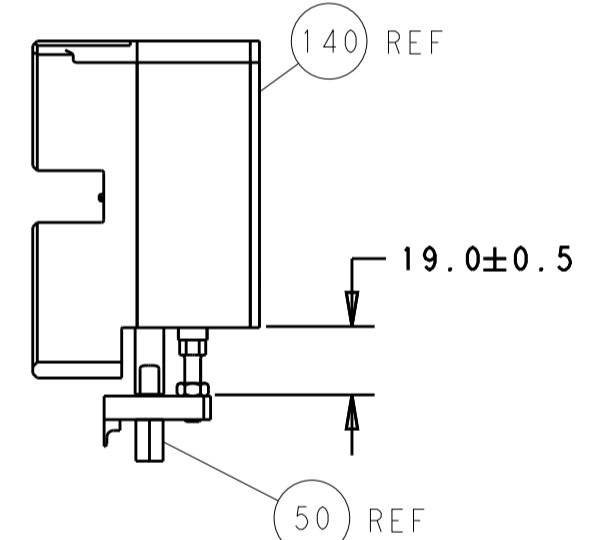
# CAM POSITIONS



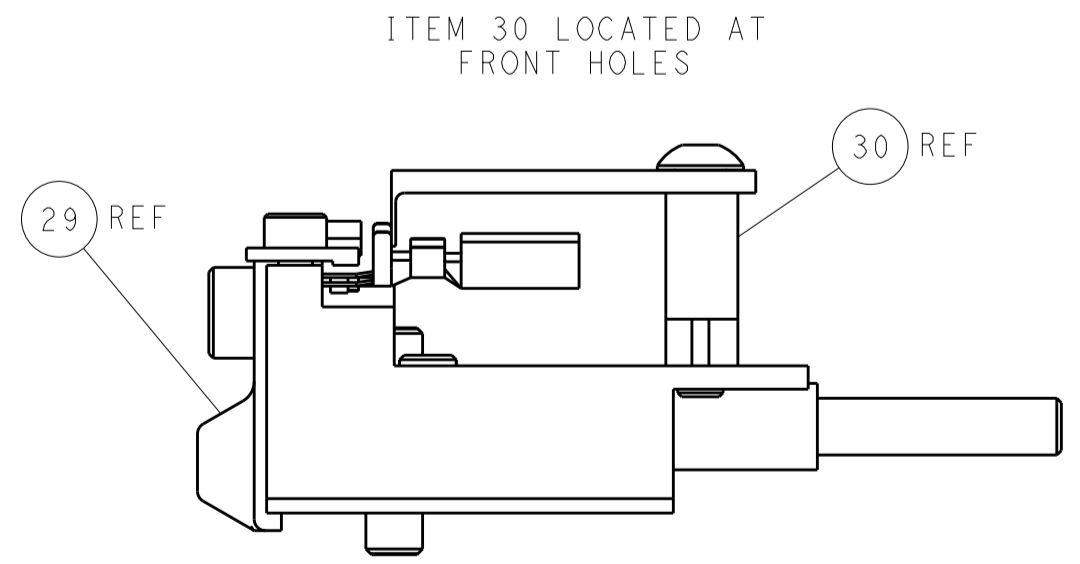
SHEAR DEPRESSOR DETAIL



TERMINAL SUPPORT LOCATION



HOLDDOWN SET-UP



FEED TRACK POSITION GUIDE BY INSULATION BARREL

**PACIFIC VERSION**  
 Shown on sheets 3 of 4 & 4 of 4  
 (Atlantic version shown on sheets 1 of 4 & 2 of 4)

DIMENSIONS:		TOLERANCES UNLESS OTHERWISE SPECIFIED:		DWN: HOFFNER 18MAR2013		TE Connectivity	
mm	0 PLC ±	1 PLC ±	2 PLC ±	3 PLC ±	4 PLC ±	5 PLC ±	Harrisburg, PA 17105-3608
MATERIAL:		FINISH:		CHK: TELBIN 19MAR2013		NAME: Ocean Side Feed Applicator	
				APVD: TELBIN 19MAR2013		SIZE: CAGE CODE: DRAWING NO: 00779 ©=2151911	
				PRODUCT SPEC:		RESTRICTED TO:	
				APPLICATION SPEC:		Customer Accessible Production Drawing	
				WEIGHT:		SCALE: 1:2 SHEET 4 OF 4 REV B	