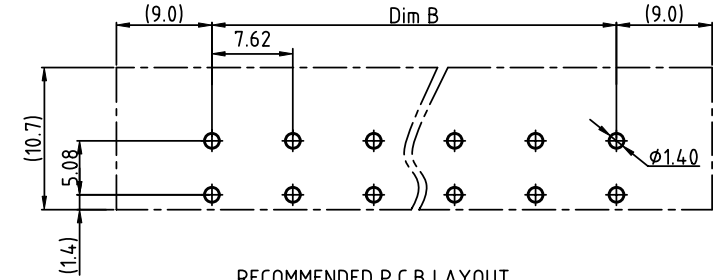
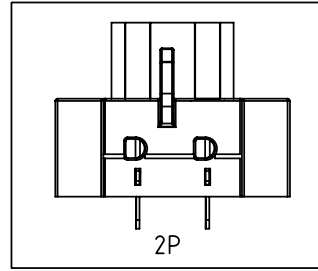
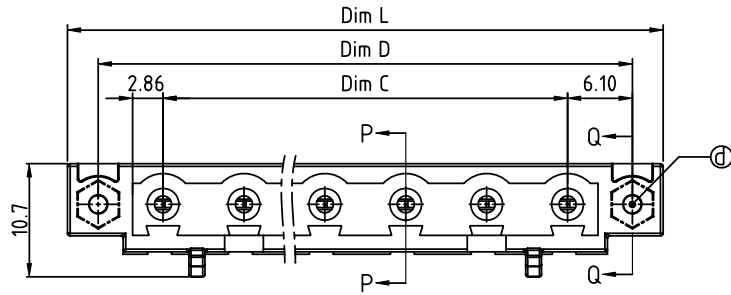
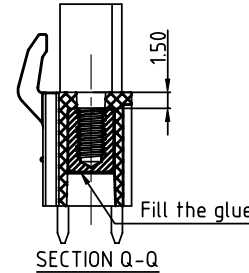
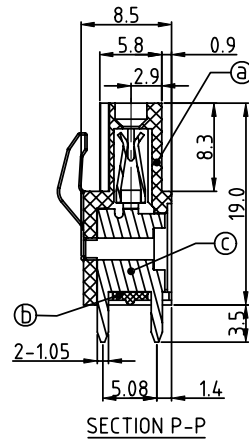
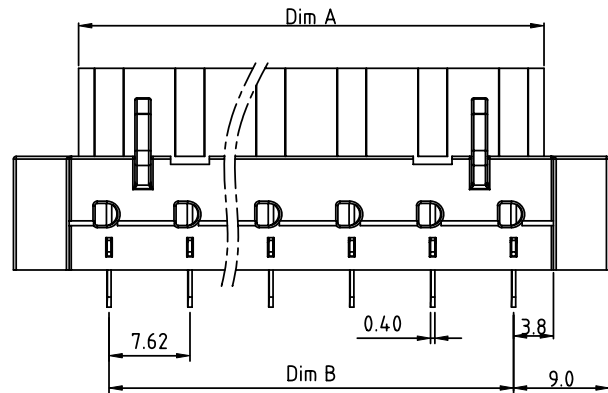


PRODUCT NUMBER	PITCH
V7xx02x000J0G	7.62 mm



RECOMMENDED P.C.B LAYOUT
TOP VIEW



Materials

- Item ① Terminal body: Thermoplastic (UL94V-0)
- Item ② Terminal Cover: Thermoplastic (UL94V-0)
- Item ③ Female contact: High conductivity copper, Tin plated
- Item ④ Flange Nut: Brass M2.5

Electrical cULus

- Voltage rating: 300VAC
- Current rating: 20A
- Withstanding Voltage: 1.6kv
- Operating temperature: -40°C to +115°C
- Soldering temperature: 260°C±5°C/5 Sec
- Safety Approval:

N=Number of poles
 Dim L=(N-1)×7.62+18
 Dim A=(N-1)×7.62+5.72
 Dim B=(N-1)×7.62
 Dim C=(N-1)×7.62
 Dim D=(N-1)×7.62+12.2

poles	Tolerance
2-6p	±0.15
7-12p	±0.20
13-16p	±0.30

PART NO.: V7 xx 0 2 x 0 00J0 G

Solid block	0	Black (RAL9005)	RoHS compliant (lead<4%) In copper Alloy
No. of poles	2	Red (RAL3001/D)	
02 2poles	3	Orang(RAL2011/P)	
03 3poles	4	Yello(RAL1018/A)	
...	5	Green(RAL6018/T)	
16 16poles	6	Blue (RAL5015/A)	
	8	Grey(RAL7035/D)	
	9	White(RAL1102)	
	C	Gree(RAL6018/U)	

mat'l. code		surface ASME Y14.5	tolerance ASME Y14.5	projection 	product family TERMINAL BLOCK
ltr	ecn no	dr	date	tolerances unless otherwise specified	title TERMINAL BLOCK
				angles $X \pm 1^\circ$	PLUGGABLE PCB PLUG, WITH FLANGE, VERTICAL
				scale	MM
dr	EVIN ZHONG	050314			dwg no V7xx02x000J0G
enr	EVIN ZHONG	050314			sheet 1 of 1
chr	HANKE FENG	050314			size A4
appd	SHI JUN	050314			type CUSTOMER Drawing
sheet index	revision sheet	A	1		