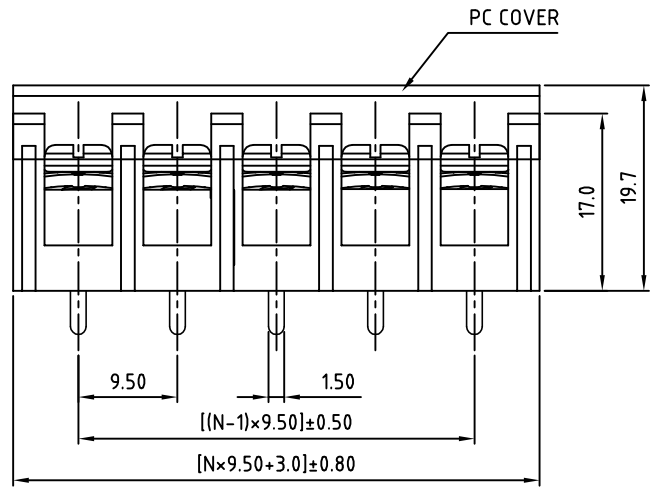
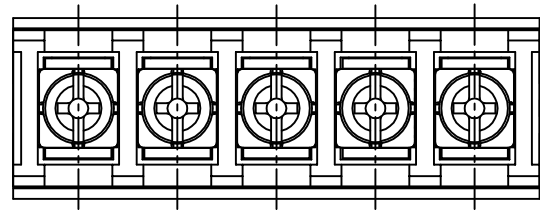
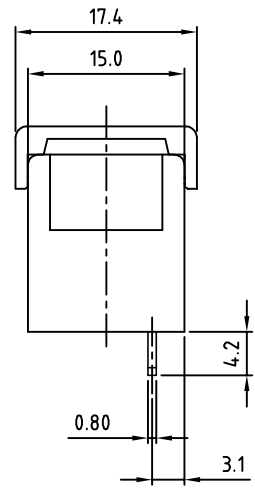


SIGN	DATE	DESCRIPTION	APPROVER

THIS IS CAD DRAWING, DO NOT REVISE MANUALLY!!!



N=Number of poles



SPECIFICATIONS

- VOLTAGE & CURRENT: 300 V, 20 A
- WITHSTANDING VOLTAGE: AC 2000 V/Min
- INSULATION RESISTANCE: 1000 MΩ OR MORE AT DC 500 V
- TEMPERATURE RANGE: -40 °C ~ +105 °C
- SCREW TORQUE VALUE: 12 Lb-In.
- WIRE RANGE: 22 - 12AWG
- 1) MOLDED PARTS: THERMOPLASTIC, UL 94 V-0 BLACK
- 2) TERMINAL: BRASS, 0.8t, Tin PLATED
- 3) TERMINAL SCREWS: STEEL, Ni PLATED, M3.5
- 4) COVER MATERIAL: PC
- APPROVAL: us
- RoHS Compliant

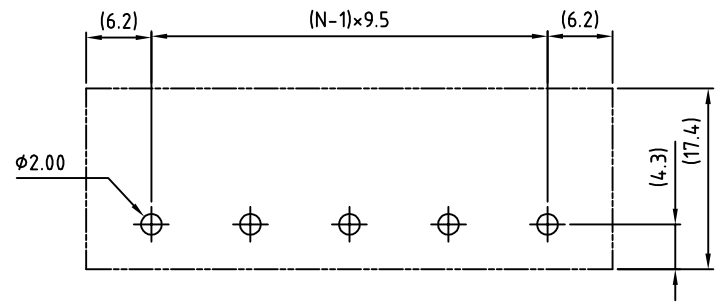
PART NUMBER:

OSTYK504XX230

NO. OF POLES

- 02: 2 POLES
- 03: 3 POLES
- 04: 4 POLES
- ⋮
- 30: 30 POLES

THESE DRAWINGS AND SPECIFICATIONS ARE THE PROPERTY OF ON-SHORE TECHNOLOGY, INC. AND SHALL NOT BE REPRODUCED, COPIED OR USED IN ANY MANNER WITHOUT THE PRIOR WRITTEN CONSENT OF ON-SHORE TECHNOLOGY, INC.



PCB LAYOUT

TITLE		OSTYK-504 Without Flange Series				
PART NO.		OSTYK504XX230		DWG NO.		OSTYK504XX230.DWG
APPROVED	CHECKED	DESIGNED	DRAWN	CUST NO.	Tolerance	
Shi Jun 2007.07.18	Seamus 2007.07.18	LUCY 2007.7.18	LUCY 2007.7.18		UNIT: mm	X. ±0.50
					SCALE: NONE	X.X ±0.30
					SHEET: 01/01	X.XX ±0.10
					REV.: B	X° ±1°