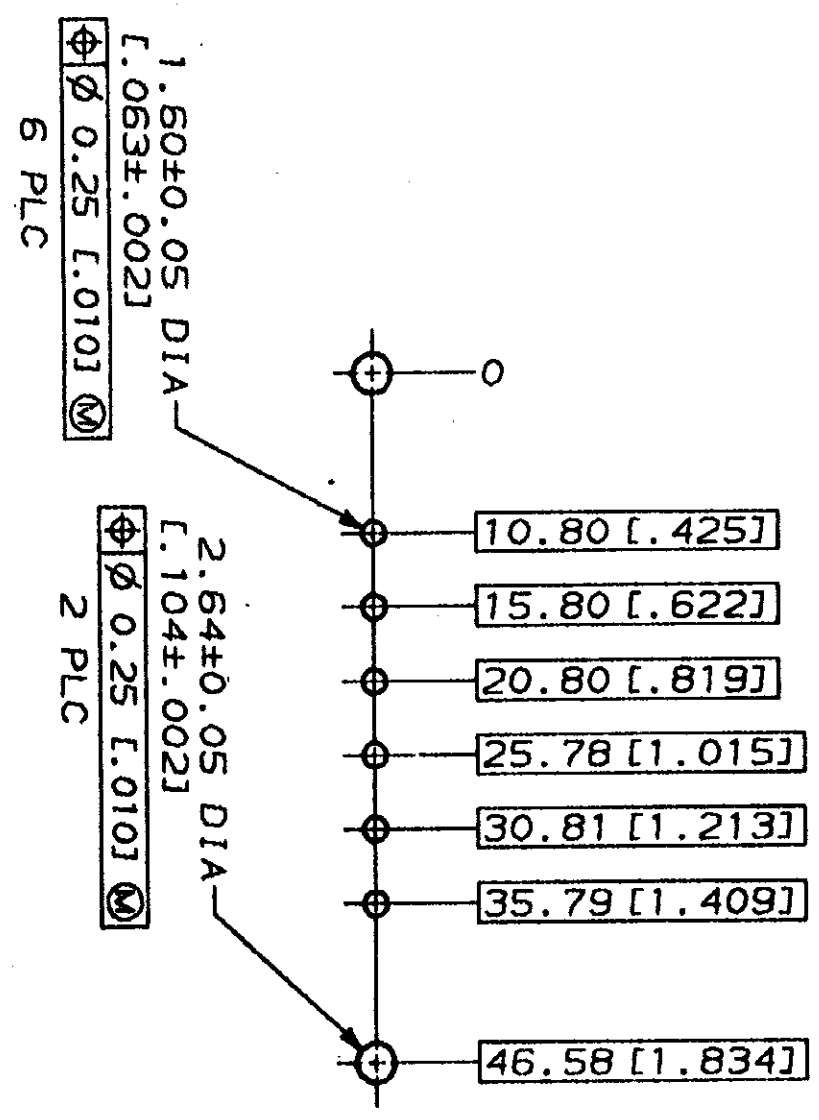
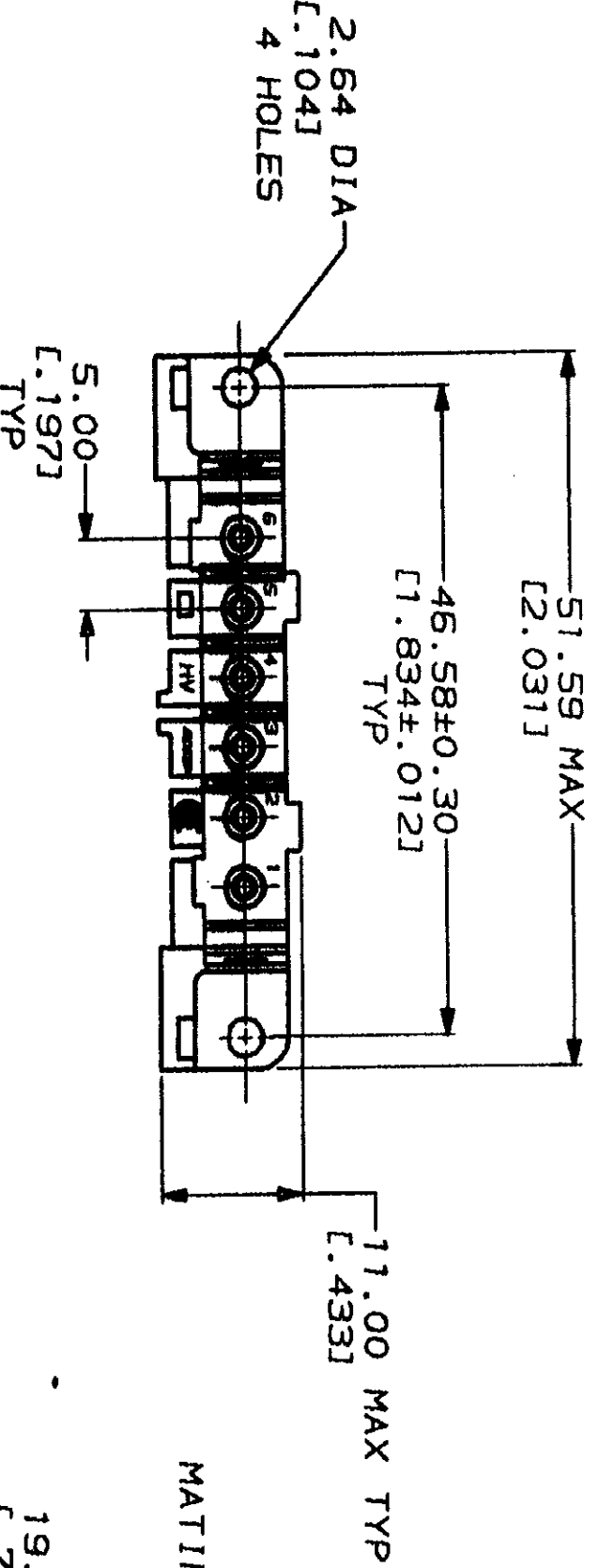
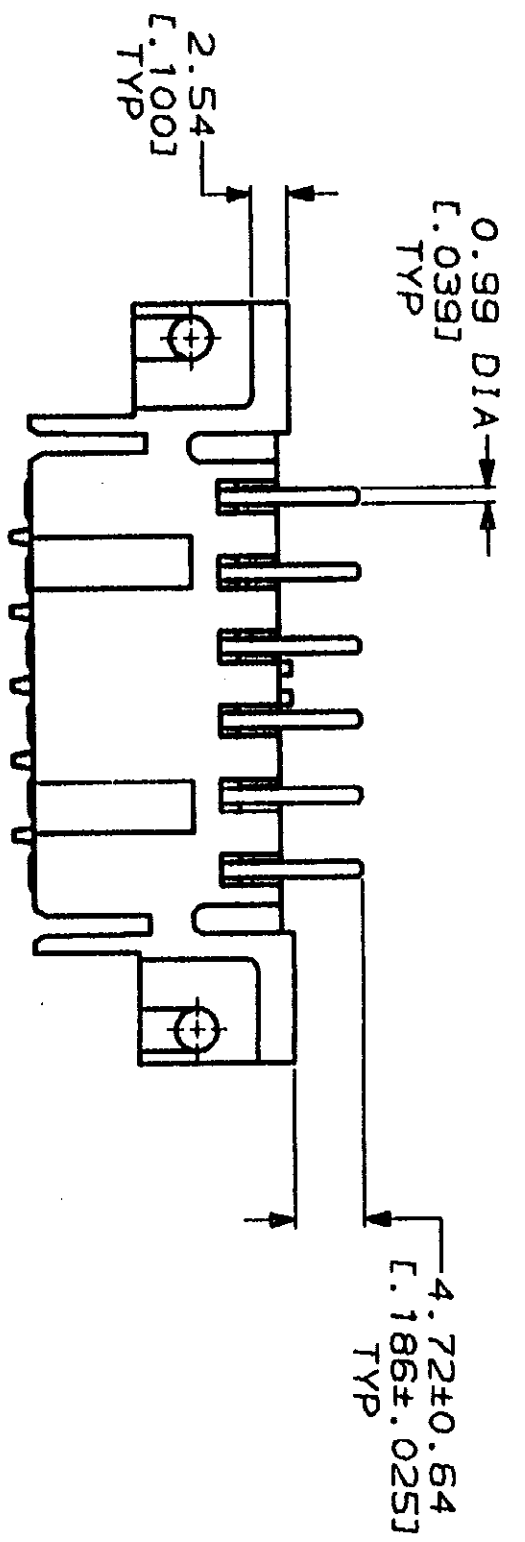
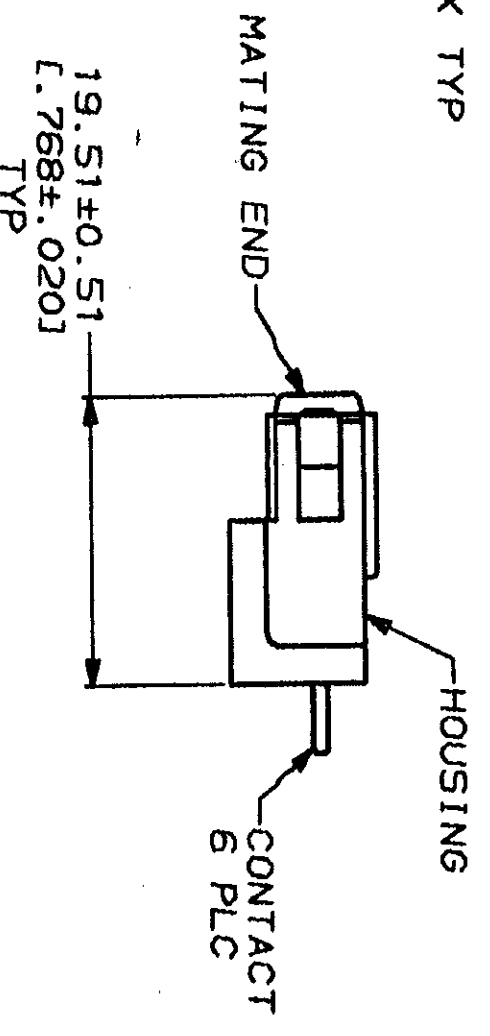


REV	LOC	QTY	ZONE	LTR	DESCRIPTION	DATE	APPD
1	BD	37	H		REDRAWN WITHOUT CHANGE		

REV	DESCRIPTION	DATE	APPD
1	REDRAWN WITHOUT CHANGE		



RECOMMENDED PC BOARD LAYOUT



- 1 NYLON, RED.
- 2 PHOSPHOR BRONZE.
- 3 3.81µm [L.000150] MIN TIN-LEAD OVER 1.27µm [L.000050] MIN NICKEL.
- 4 0.76µm [L.000030] MIN GOLD FOR A LENGTH OF 5.08 [L.200] MIN FROM MATING END, 3.81µm [L.000150] MIN TIN-LEAD FOR A LENGTH OF 5.36 [L.211] MIN FROM OPPOSITE END, BOTH OVER 1.27µm [L.000050] MIN NICKEL.

THIS DRAWING IS A CONTROLLED DOCUMENT FOR AMP AND THE CUSTOMER. ANY REVISIONS OR MODIFICATIONS SHOULD BE APPROVED BY THE LATEST REVISION.

DO NOT SCALE PRINT.  
 UNLESS SPECIFIED DIMENSIONS IN mm [INCHES] TOLERANCES IN "M"  
 2 PLC DEC ± 0.25 [L.010]  
 3 PLC DEC ± . . .  
 ANGLES  
 MATERIAL HOUSING: 1  
 CONTACTS: 2  
 FINISH CONTACTS: SEE TABLE

DR	08/07/92	L. SIPE
CHK	8-25-92	R. STONE
APPD	8-25-92	A. TRAVIS
APPD	8-25-92	C. RICHIE
PRODUCT SPEC		
APPLICATION SPEC		
WEIGHT		

AMP  
 AMP Incorporated  
 Harrisburg, PA 17105-9608

SOCKET HEADER ASSEMBLY, 6 POSN, IN-LINE, METRIMATE

SIZE C CASE CODE 00779 DRAWING NO C-207611 SCALE 2:1

CONTACT FINISH	207611-3
PART NO	207611-1