

REVISION W

NOTES:

- ⊕ REPRESENTS A CRITICAL DIMENSION.
- MAXIMUM HEIGHT VARIATION BETWEEN ANY TWO PINS: .005[.13]
- MAXIMUM PIN ROTATION IN BODY: 2°
- TAILS TO BE SHEARED TO ACHIEVE DIMENSIONAL CALLOUT ±.010[.25]
- MINIMUM PUSHOUT FORCE: 3 LBS.
- MAXIMUM ALLOWABLE BURR: .0015[.038]
- THROUGH HOLES (-S & -RA) ARE TO BE BULK PACKAGED.
- SURFACE MOUNT (-VS) IS TO BE PACKAGED AS FOLLOWS:
POSITIONS -04 THRU -20 ARE TO BE TUBE PACKAGED;
POSITION -02 TO BE LAYER PACKAGED;
-03 POSITION TO BE TUBE OR LAYER PACKAGED.
- MAXIMUM CUT FLASH: .020[.51]
- COPLANARITY (-VS); POSITIONS -02 THRU -15: .008[.20],
POSITIONS -16 THRU -20: .010[.25]

DO NOT SCALE FROM THIS PRINT

HPM-XX-XX-XX-X-XX-X

No OF POSITIONS
-01 THRU -20

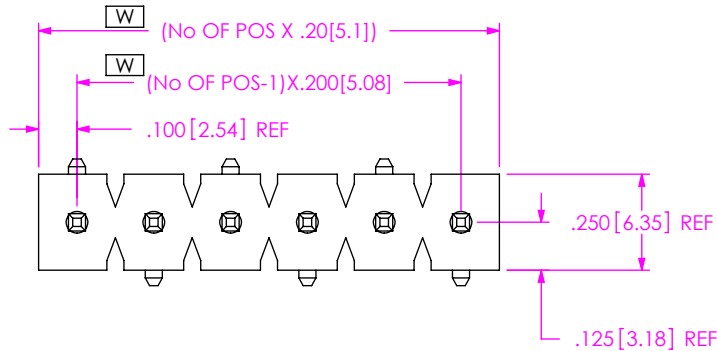
LEAD STYLE
SEE TABLE 1

PLATING SPECIFICATIONS
-T: MATTE TIN CONTACT AND TAIL
-TM: MATTE TIN CONTACT AND TAIL

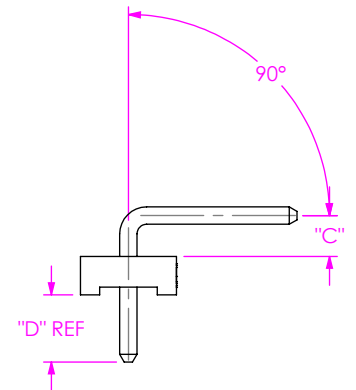
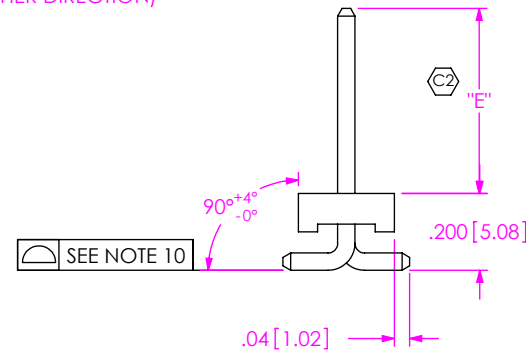
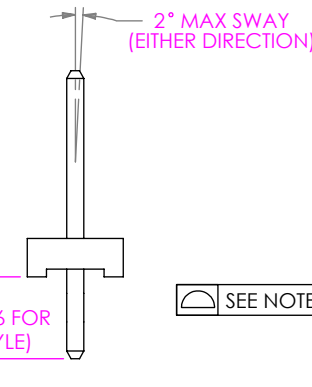
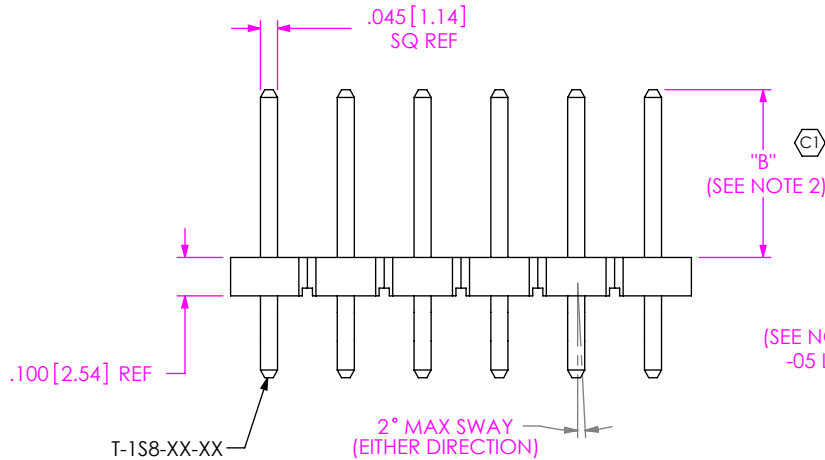
OPTION
-P: PICK PLACE PAD (USE PPP-47) (-VS ONLY, 3 POS MIN, NOT AVAILABLE IN -05 LEAD STYLE)

OPTION
-RA: RIGHT ANGLE POST (-02 & -04 LEAD STYLE ONLY)
-VS: VERTICAL SURFACE MOUNT (-01 & -02 LEAD STYLE ONLY) (2 POSITION MINIMUM)

ROW SPECIFICATION
-S: SINGLE
SEE TABLE 2



FORM	BODY	MATERIAL
T/H	FSW-20-200	BLACK, PBT, UL 94 VO
RA	FSW-20-200	
VS	HFSW-20-200	NATURAL, LCP, UL 94 VO



-S: SINGLE

-VS: SURFACE MOUNT
-01 & -02 ONLY

-RA: RIGHT ANGLE
-02 & -04 ONLY

TABLE 1

STYLE	TERMINAL	"A"	"B"	"C"	"D"	"E"
-01	T-1S8-11-TX	.180[4.57]	.470[11.94]	N/A	N/A	.422[10.72]
-02	T-1S8-12-TX	.180[4.57]	.520[13.21]	.100[2.54]	.175[4.45]	.482[12.24]
-04	T-1S8-14-TX	.161[4.09]	.829[21.06]	.195[4.95]	.156[3.96]	N/A
-05	T-1S8-11-TX	.180[4.57]	.150[3.81]	N/A	N/A	N/A
-06	T-1S8-15-TX	.180[4.57]	1.070[27.18]	N/A	N/A	N/A

UNLESS OTHERWISE SPECIFIED, DIMENSIONS ARE IN INCHES.
TOLERANCES ARE:
DECIMALS ANGLES
.XX: ±.01 [.3] 2°
.XXX: ±.005 [.13]
.XXXX: ±.0020 [.051]

PROPRIETARY NOTE
THIS DOCUMENT CONTAINS INFORMATION CONFIDENTIAL AND PROPRIETARY TO SAMTEC, INC. AND SHALL NOT BE REPRODUCED OR TRANSFERRED TO OTHER DOCUMENTS OR DISCLOSED TO OTHERS OR USED FOR ANY PURPOSE OTHER THAN THAT WHICH IT WAS OBTAINED WITHOUT THE EXPRESSED WRITTEN CONSENT OF SAMTEC, INC.

samtec

520 PARK EAST BLVD., NEW ALBANY, IN 47150
PHONE: 812-944-6733 FAX: 812-948-5047
e-Mail: info@SAMTEC.com code 53322

MATERIAL: DO NOT SCALE DRAWING SHEET SCALE: 1:1

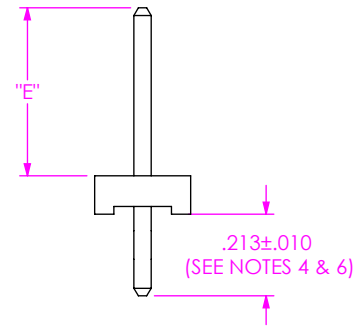
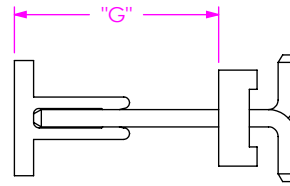
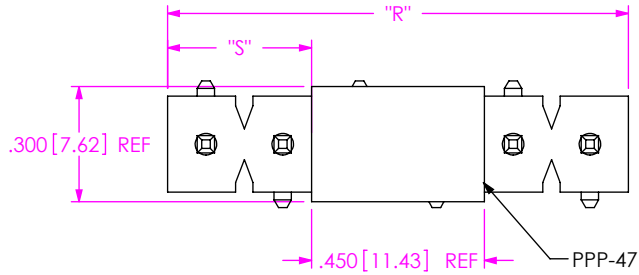
BODY: SEE TABLE 2
TERMINAL: CDA7025
GRADE TL02
MAX BOW ALLOWED: .003 IN/IN

DESCRIPTION: .200 HIGH POWER BLOCK, ASM

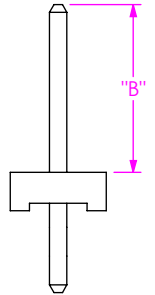
DWG. NO. HPM-XX-XX-XX-X-XX-X

BY: BURRES 08/21/98 SHEET 1 OF 2

NOTE:
 "R"=No OF POS X .200[5.08] REF
 "S"= $\{("R" -.450[11.43])/2\} \pm .020[.51]$
 "G"= POST HEIGHT +.050[1.27] REF

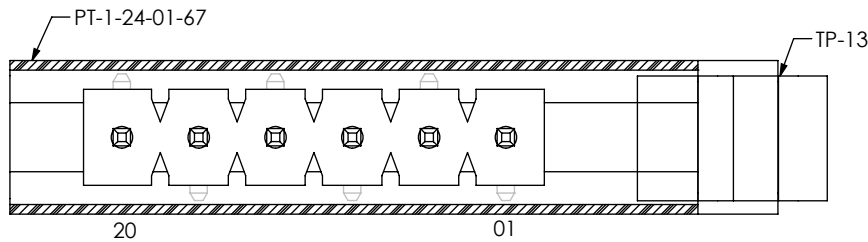


IN-PROCESS
-VS



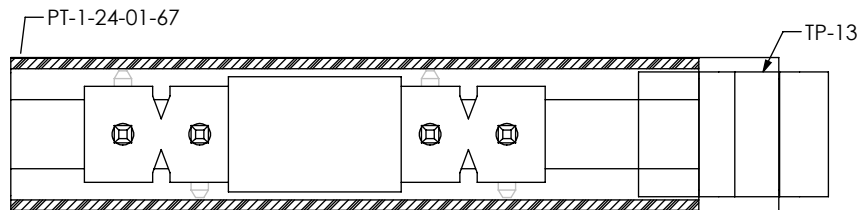
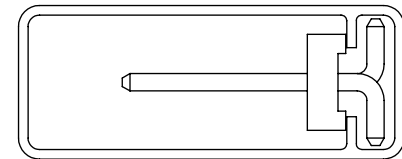
IN-PROCESS
-RA

-P: PICK & PLACE PAD OPTION
 (-VS ONLY, 3 POS MIN)
 (NOT AVAILABLE IN -05 LEAD STYLE)

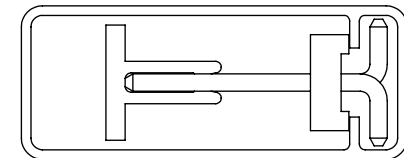


PACKAGING VIEW
 (SEE NOTE 7 & 8)

-VS



-VS-P



PROPRIETARY NOTE
 THIS DOCUMENT CONTAINS INFORMATION
 CONFIDENTIAL AND PROPRIETARY TO
 SAMTEC, INC. AND SHALL NOT BE REPRODUCED
 OR TRANSFERRED TO OTHER DOCUMENTS OR
 DISCLOSED TO OTHERS OR USED FOR ANY
 PURPOSE OTHER THAN THAT WHICH IT WAS
 OBTAINED WITHOUT THE EXPRESSED WRITTEN
 CONSENT OF SAMTEC, INC.

DO NOT SCALE DRAWING

SHEET SCALE: 1:1

samtec

520 PARK EAST BLVD, NEW ALBANY, IN 47150
 PHONE: 812-944-6733 FAX: 812-948-5047
 e-Mail info@SAMTEC.com code 55322

DESCRIPTION:
 .200 HIGH POWER BLOCK, ASM

DWG. NO.
 HPM-XX-XX-XX-X-XX-X

BY: BURRES 08/21/98 SHEET 2 OF 2