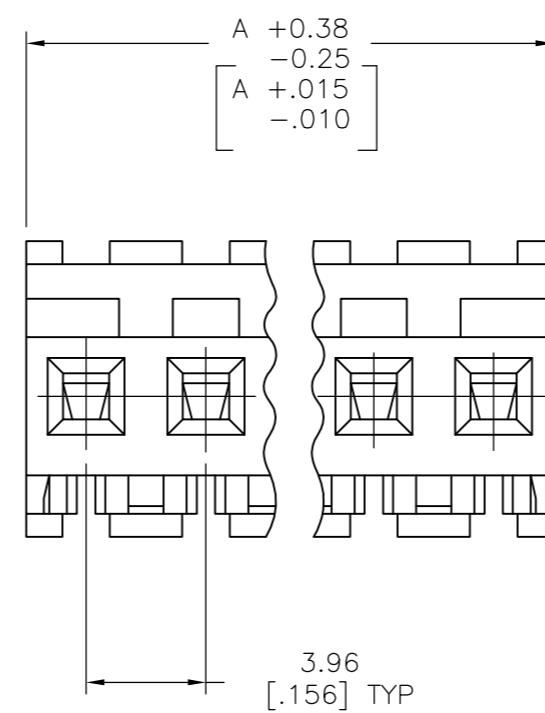
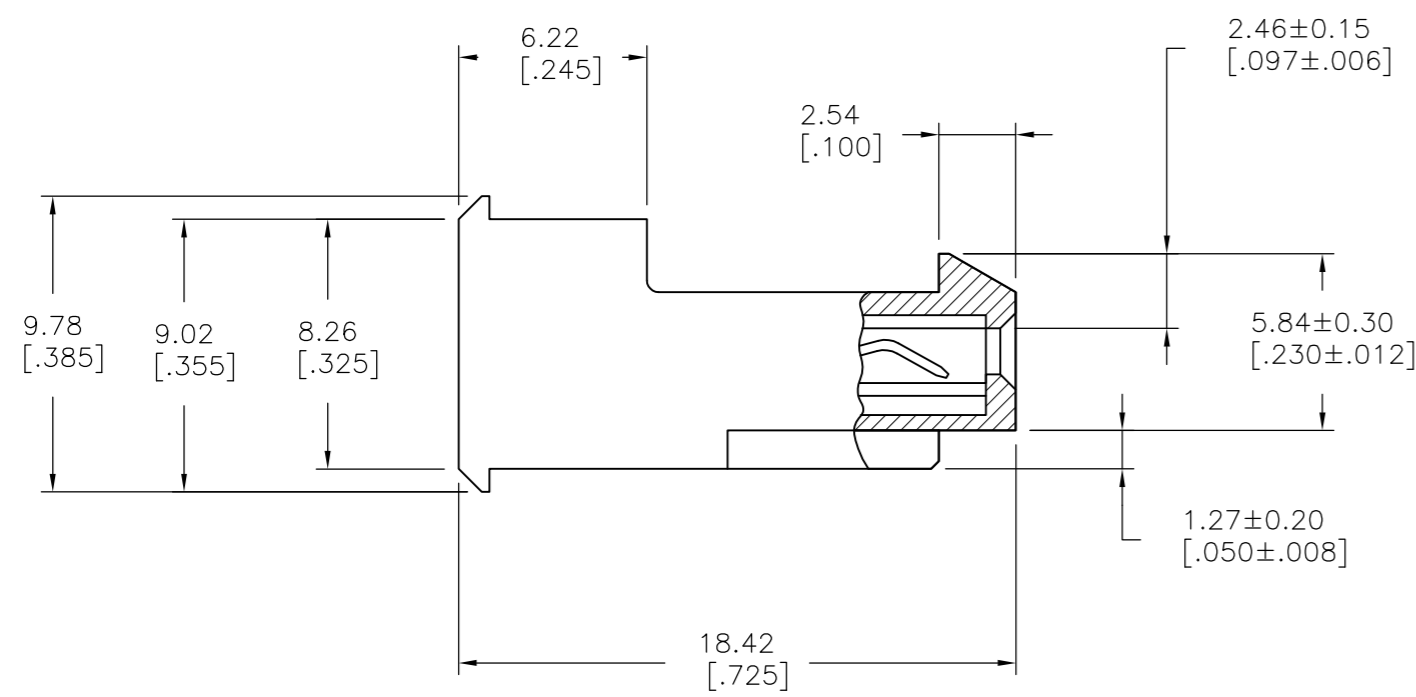
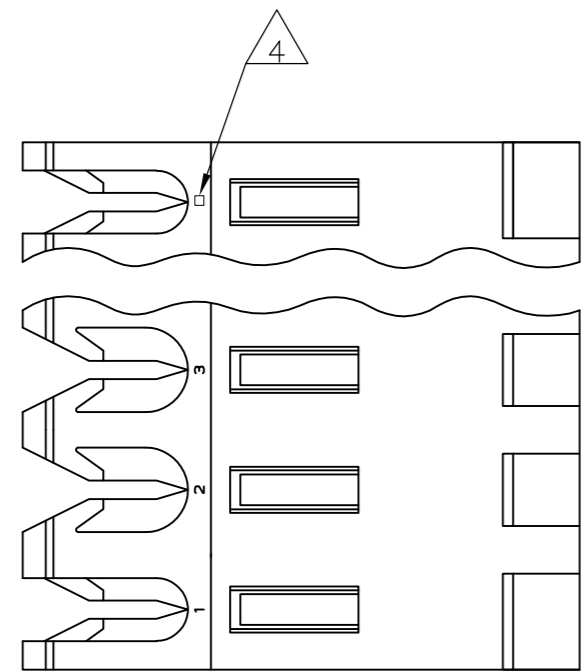


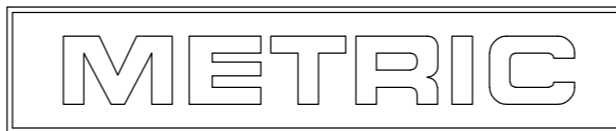
THIS DRAWING IS UNPUBLISHED. RELEASED FOR PUBLICATION
 © COPYRIGHT - By - ALL RIGHTS RESERVED.

LOC	DIST	REVISIONS					
CM	54	P	LTR	DESCRIPTION	DATE	DWN	APVD
		R		REVISED PER ECO-12-007611	03AUG12	KH	SM



95.10 [3.744]	24	5-640595-4	
91.14 [3.588]	23	5-640595-3	
87.17 [3.432]	22	5-640595-2	
83.21 [3.276]	21	5-640595-1	
79.25 [3.120]	20	5-640595-0	
75.29 [2.964]	19	4-640595-9	
71.32 [2.808]	18	4-640595-8	
67.36 [2.652]	17	4-640595-7	
63.40 [2.496]	16	4-640595-6	
59.44 [2.340]	15	4-640595-5	
55.47 [2.184]	14	4-640595-4	
51.51 [2.028]	13	4-640595-3	
47.55 [1.872]	12	4-640595-2	
43.59 [1.716]	11	4-640595-1	
39.62 [1.560]	10	4-640595-0	
35.66 [1.404]	9	3-640595-9	
31.70 [1.248]	8	3-640595-8	
27.74 [1.092]	7	3-640595-7	
23.77 [.936]	6	3-640595-6	
19.81 [.780]	5	3-640595-5	
15.85 [.624]	4	3-640595-4	
11.89 [.468]	3	3-640595-3	
7.92 [.312]	2	3-640595-2	
△ SUPERSEDED BY 5-640595-4	95.10 [3.744]	24	2-640595-4
△ SUPERSEDED BY 5-640595-3	91.14 [3.588]	23	2-640595-3
△ SUPERSEDED BY 5-640595-2	87.17 [3.432]	22	2-640595-2
△ SUPERSEDED BY 5-640595-1	83.21 [3.276]	21	2-640595-1
△ SUPERSEDED BY 5-640595-0	79.25 [3.120]	20	2-640595-0
△ SUPERSEDED BY 4-640595-9	75.29 [2.964]	19	1-640595-9
△ SUPERSEDED BY 4-640595-8	71.32 [2.808]	18	1-640595-8
△ SUPERSEDED BY 4-640595-7	67.36 [2.652]	17	1-640595-7
△ SUPERSEDED BY 4-640595-6	63.40 [2.496]	16	1-640595-6
△ SUPERSEDED BY 4-640595-5	59.44 [2.340]	15	1-640595-5
△ SUPERSEDED BY 4-640595-4	55.47 [2.184]	14	1-640595-4
△ SUPERSEDED BY 4-640595-3	51.51 [2.028]	13	1-640595-3
△ SUPERSEDED BY 4-640595-2	47.55 [1.872]	12	1-640595-2
△ SUPERSEDED BY 4-640595-1	43.59 [1.716]	11	1-640595-1
△ SUPERSEDED BY 4-640595-0	39.62 [1.560]	10	1-640595-0
△ SUPERSEDED BY 3-640595-9	35.66 [1.404]	9	640595-9
△ SUPERSEDED BY 3-640595-8	31.70 [1.248]	8	640595-8
△ SUPERSEDED BY 3-640595-7	27.74 [1.092]	7	640595-7
△ SUPERSEDED BY 3-640595-6	23.77 [.936]	6	640595-6
△ SUPERSEDED BY 3-640595-5	19.81 [.780]	5	640595-5
△ SUPERSEDED BY 3-640595-4	15.85 [.624]	4	640595-4
△ SUPERSEDED BY 3-640595-3	11.89 [.468]	3	640595-3
△ SUPERSEDED BY 3-640595-2	7.92 [.312]	2	640595-2
	DIM A	NO OF CIRCUITS	PART NO

- 1 MATERIAL: CONNECTOR - NYLON UL94V-2
CONTACTS - 0.30[.012] THICK COPPER ALLOY (BRIGHT TIN-LEAD 0.00203[.000080] MIN. THICK FOR CONTACTS 640595-2 THRU 2-640595-4) (MATTE WHISKER MITIGATED TIN 0.00203[.000080] MIN THICKNESS OVER NICKEL UNDERPLATE FOR 3-640595-2 THRU 5-640595-4).
- 2 CONTACTS ACCEPT 26 AWG WIRE WITH 2.41[.095] MAX INSULATION DIAMETER.
- 3 CONTACTS MUST ACCEPT 1.14±0.03[.045±.001] SQUARE POST AND REMAIN LOCKED IN POSITION.
- 4 IDENTIFICATION NUMBER FOR LAST CIRCUIT MAY NOT APPEAR ON ALL ASSEMBLIES.
- 5 DIMENSIONS IN BRACKETS ARE IN INCHES.
- 6 HOUSING FEATURES ARE: FEED-THRU WITH LOCKING RAMP.
- 7 OBSOLETE PARTS: OBSOLETE CIS STREAMLINING PER D.RENAUD/D.SINISI
- 8 BLUE COLOR STRIPE ON HOUSING (NOT SHOWN) MAY RUN DOWN BETWEEN RIBS.



THIS DRAWING IS A CONTROLLED DOCUMENT.		DWN B. LEWIS 12FEB91		
DIMENSIONS: mm [INCHES]		CHK R. SWING 12FEB91		
TOLERANCES UNLESS OTHERWISE SPECIFIED: 0 PLC ± - 1 PLC ± - 2 PLC ± - 3 PLC ± 0.13 [.005] 4 PLC ± - ANGLES ± -		APVD D. CLARK 19FEB91	NAME MTA-156 CONNECTOR ASSEMBLY, 26 AWG, STANDARD	
MATERIAL 1		FINISH 1	PRODUCT SPEC 108-1051	RESTRICTED TO -
		APPLICATION SPEC 114-1020	SIZE A2	CAGE CODE 00779
		WEIGHT -	DRAWING NO C-640595	SCALE 4:1
		CUSTOMER DRAWING	SHEET 1 OF 1	REV R