

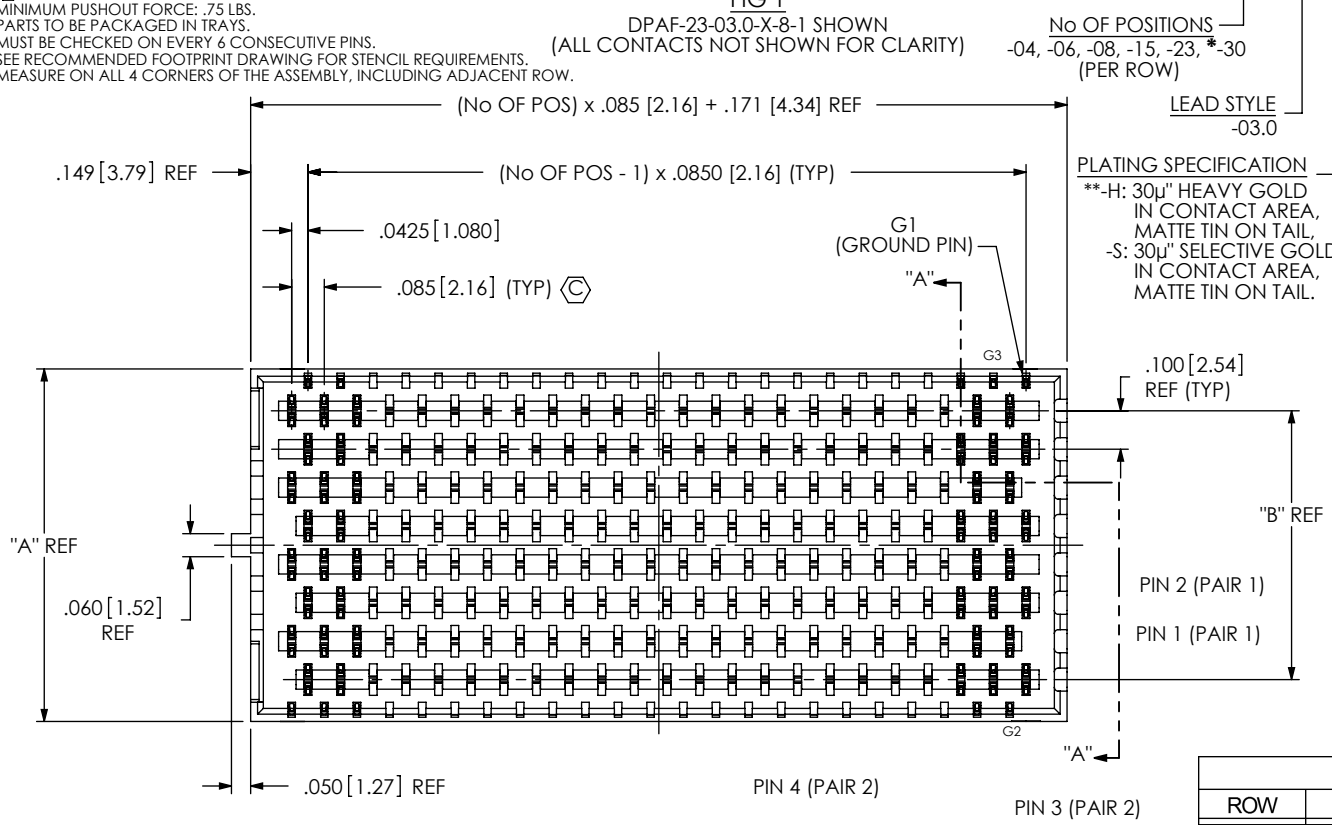
DO NOT SCALE FROM THIS PRINT

NOTES:

1. Ⓢ REPRESENTS A CRITICAL DIMENSION.
2. MINIMUM PUSHOUT FORCE: .75 LBS.
3. PARTS TO BE PACKAGED IN TRAYS.
4. MUST BE CHECKED ON EVERY 6 CONSECUTIVE PINS.
5. SEE RECOMMENDED FOOTPRINT DRAWING FOR STENCIL REQUIREMENTS.
6. MEASURE ON ALL 4 CORNERS OF THE ASSEMBLY, INCLUDING ADJACENT ROW.

FIG 1
DPAF-23-03.0-X-8-1 SHOWN
(ALL CONTACTS NOT SHOWN FOR CLARITY)

DPAF-XX-03.0-X-X-X-XX



No OF POSITIONS
-04, -06, -08, -15, -23, *-30
(PER ROW)

LEAD STYLE
-03.0

PLATING SPECIFICATION
**-H: 30μ" HEAVY GOLD IN CONTACT AREA, MATTE TIN ON TAIL,
-S: 30μ" SELECTIVE GOLD IN CONTACT AREA, MATTE TIN ON TAIL.

OPTION
-A: ALIGNMENT PIN (SEE FIG 2, SHT 3)
-K: KAPTON PAD (SEE FIG 3, SHT 3)
-TR: TAPE & REEL

SOLDER CRIMP MATERIAL
-1: 63% TIN / 37% LEAD (USE SUB-C-191-03.0-S-1)
-2: 96.5% TIN / 3% SILVER / .5% COPPER (USE SUB-C-191-03.0-S-2)

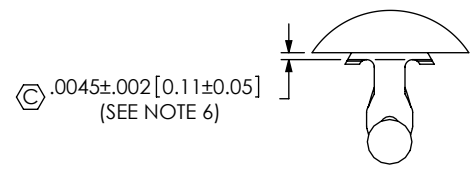
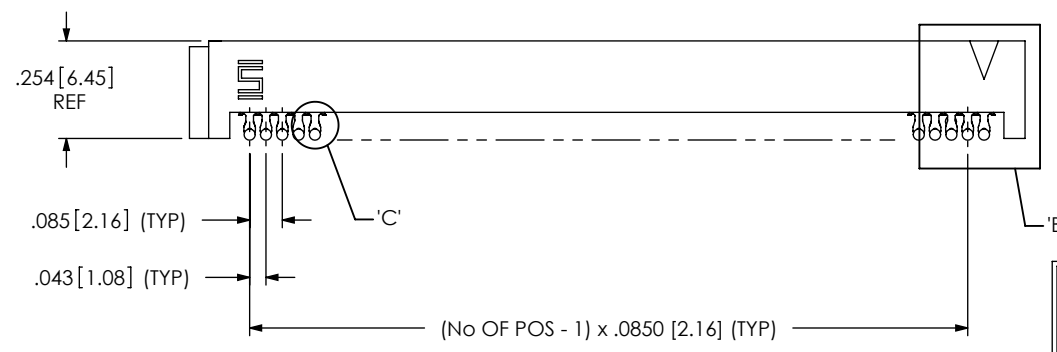
ROW
-8: 8 DIFFERENTIAL PAIR ROWS
-3: 3 DIFFERENTIAL PAIR ROWS
* = NOT RELEASED FOR PRODUCTION
** = FOR EXISTING CUSTOMERS ONLY

TABLE 1 - ARRAY SIZE TABLE

SIZE	DIFFERENTIAL PAIRS PER ARRAY	
	3 ROW	8 ROW
-04	6 PAIRS	16 PAIRS
-06	12 PAIRS	32 PAIRS
-08	18 PAIRS	48 PAIRS
-15	39 PAIRS	104 PAIRS
-23	63 PAIRS	168 PAIRS
-30	84 PAIRS	N/A

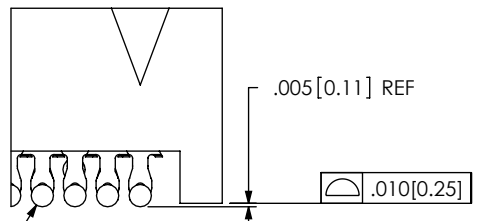
TABLE 2

ROW	"A"	"B"	"C"
-8	.918[23.32]	.700[17.78]	.209[5.31]
-3	.418[10.62]	.200[5.08]	.096[2.44]



PATENT NUMBERS
6979238 / 7137832
6969286 / 7178232
7159312 / 7172438
7052337 / 7125293

DETAIL 'C'
SCALE 8 : 1
(ALL CONTACTS NOT SHOWN FOR CLARITY)



Ø.029 [0.74] REF (TYP)

DETAIL 'B'
SCALE 4 : 1

CPC FREQUENCY THIS SHEET

A	
B	C9, C14
C	
D	

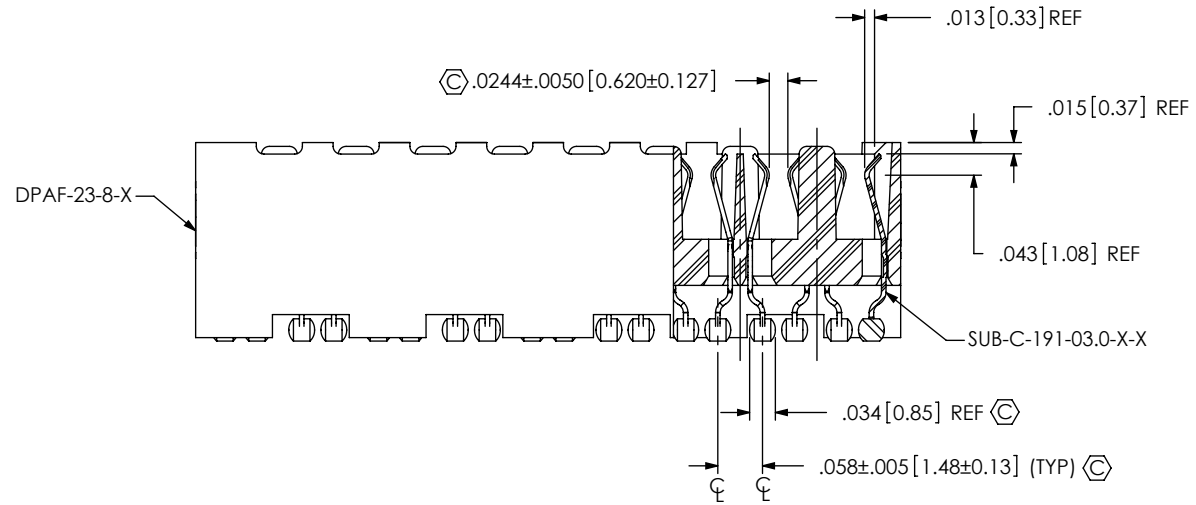
UNLESS OTHERWISE SPECIFIED, DIMENSIONS ARE IN INCHES.
TOLERANCES ARE:
DECIMALS ANGLES
.XX: ±.01 [.3] 2°
.XXX: ±.005 [.13]
.XXXX: ±.0020 [.051]

PROPRIETARY NOTE
THIS DOCUMENT CONTAINS INFORMATION CONFIDENTIAL AND PROPRIETARY TO SAMTEC, INC. AND SHALL NOT BE REPRODUCED OR TRANSFERRED TO OTHER DOCUMENTS OR DISCLOSED TO OTHERS OR USED FOR ANY PURPOSE OTHER THAN THAT WHICH IT WAS OBTAINED WITHOUT THE EXPRESSED WRITTEN CONSENT OF SAMTEC, INC.

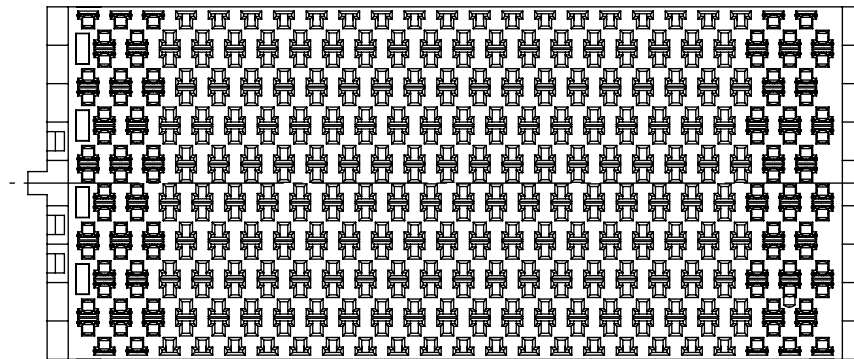
MATERIAL: DO NOT SCALE DRAWING SHEET SCALE: 2:1
INSULATOR: L.C.P., COLOR: BLACK
CONTACT OR TERMINAL: COPPER ALLOY

520 PARK EAST BLVD, NEW ALBANY, IN 47150
PHONE: 812-944-6733 FAX: 812-948-5047
e-Mail: info@SAMTEC.com code: 53322

DESCRIPTION:
.085 PITCH DP SOCKET ASSEMBLY
DWG. NO. DPAF-XX-03.0-X-X-X-XX
BY: CHAD F 06/06/2003 SHEET 1 OF 3



SECTION "A"- "A"
SCALE 4 : 1



(BOTTOM VIEW PROJECTED FROM SHEET 1)
(ALL CONTACTS NOT SHOWN FOR CLARITY)


CPC FREQUENCY THIS SHEET		PROPRIETARY NOTE THIS DOCUMENT CONTAINS INFORMATION CONFIDENTIAL AND PROPRIETARY TO SAMTEC, INC. AND SHALL NOT BE REPRODUCED OR TRANSFERRED TO OTHER DOCUMENTS OR DISCLOSED TO OTHERS OR USED FOR ANY PURPOSE OTHER THAN THAT WHICH IT WAS OBTAINED WITHOUT THE EXPRESSED WRITTEN CONSENT OF SAMTEC, INC. DO NOT SCALE DRAWING SHEET SCALE: 2:1	 520 PARK EAST BLVD., NEW ALBANY, IN 47150 PHONE: 812-944-6733 FAX: 812-948-5047 e-Mail: info@SAMTEC.com code: 55322
A			
B	C10, C13		
C			
D		DESCRIPTION: .085 PITCH DP SOCKET ASSEMBLY DWG. NO. DPAF-XX-03.0-X-X-X-XX BY: CHAD F 06/06/2003 SHEET 2 OF 3	

FIG 2
 DPAF-23-03.0-X-8-1-A SHOWN
 (SAME AS FIG 1, EXCEPT AS SHOWN)
 [ALL CONTACTS NOT SHOWN FOR CLARITY]

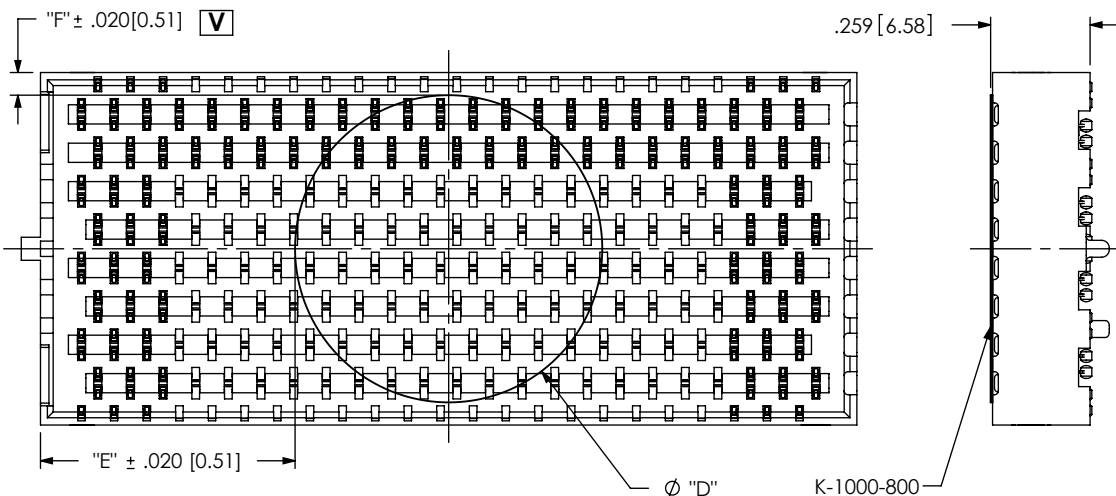
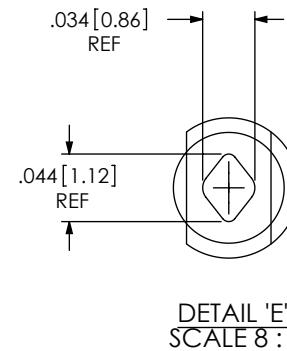
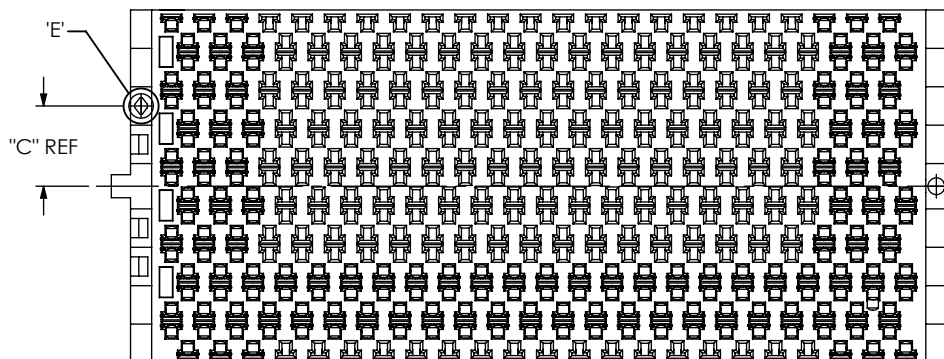
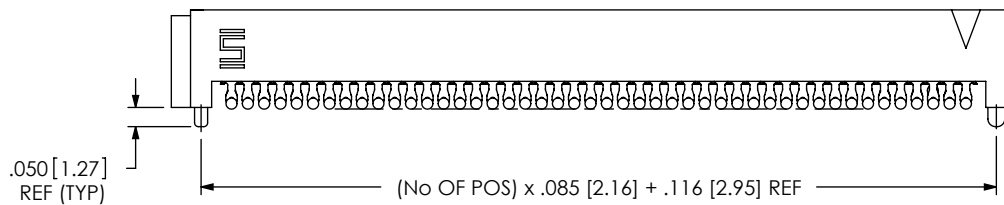


FIG 3
 DPAF-23-03.0-X-8-1-A-K SHOWN
 (SAME AS FIG 1, EXCEPT AS SHOWN)
 (ALL CONTACTS NOT SHOWN FOR CLARITY)

ROW	# OF POSITIONS	DIA "D"	DIM "E"	"F"
-3	4,6,8,15,23,30	.30 [7.6]	"E" = (No OF POS x .085[2.16] + .171[4.34] - "D") / 2	.059 [1.50]
-8	4,6	.30 [7.6]		.309 [7.85]
-8	8,15,23,30	.80 [20.3]		.059 [1.50]

CPC FREQUENCY THIS SHEET	
A	
B	
C	
D	

PROPRIETARY NOTE
 THIS DOCUMENT CONTAINS INFORMATION
 CONFIDENTIAL AND PROPRIETARY TO
 SAMTEC, INC. AND SHALL NOT BE REPRODUCED
 OR TRANSFERRED TO OTHER DOCUMENTS OR
 DISCLOSED TO OTHERS OR USED FOR ANY
 PURPOSE OTHER THAN THAT WHICH IT WAS
 OBTAINED WITHOUT THE EXPRESSED WRITTEN
 CONSENT OF SAMTEC, INC.

DO NOT SCALE DRAWING

SHEET SCALE: 2:1



520 PARK EAST BLVD, NEW ALBANY, IN 47150
 PHONE: 812-944-6733 FAX: 812-948-5047
 e-Mail: info@SAMTEC.com code: 55322

DESCRIPTION:
 .085 PITCH DP SOCKET ASSEMBLY

DWG. NO.
 DPAF-XX-03.0-X-X-X-XX

BY: CHAD F 06/06/2003 SHEET 3 OF 3