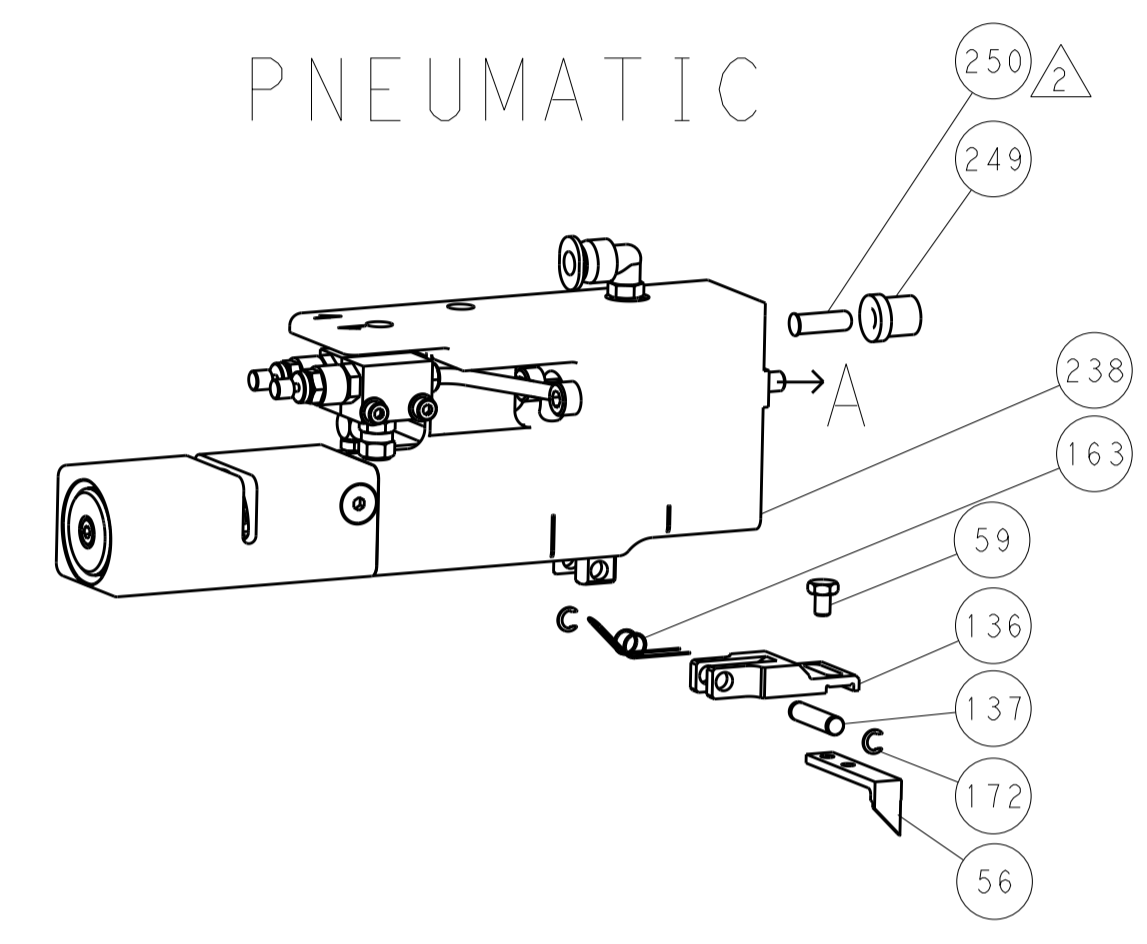




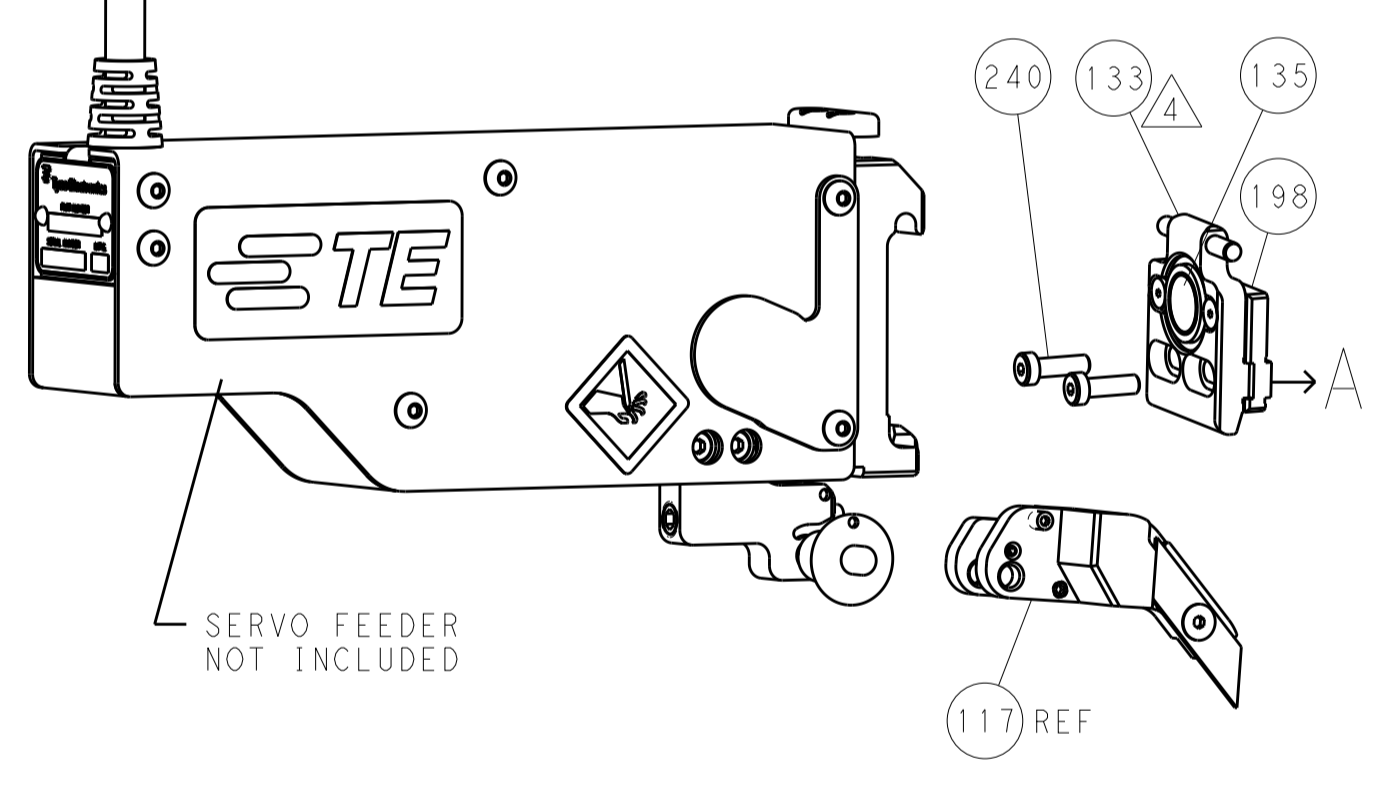
LOC		DIST		REVISIONS			
A	66	P	LTH	DESCRIPTION	DATE	OWN	APVD
		-		SEE SHEET 1			

### FEED TYPE

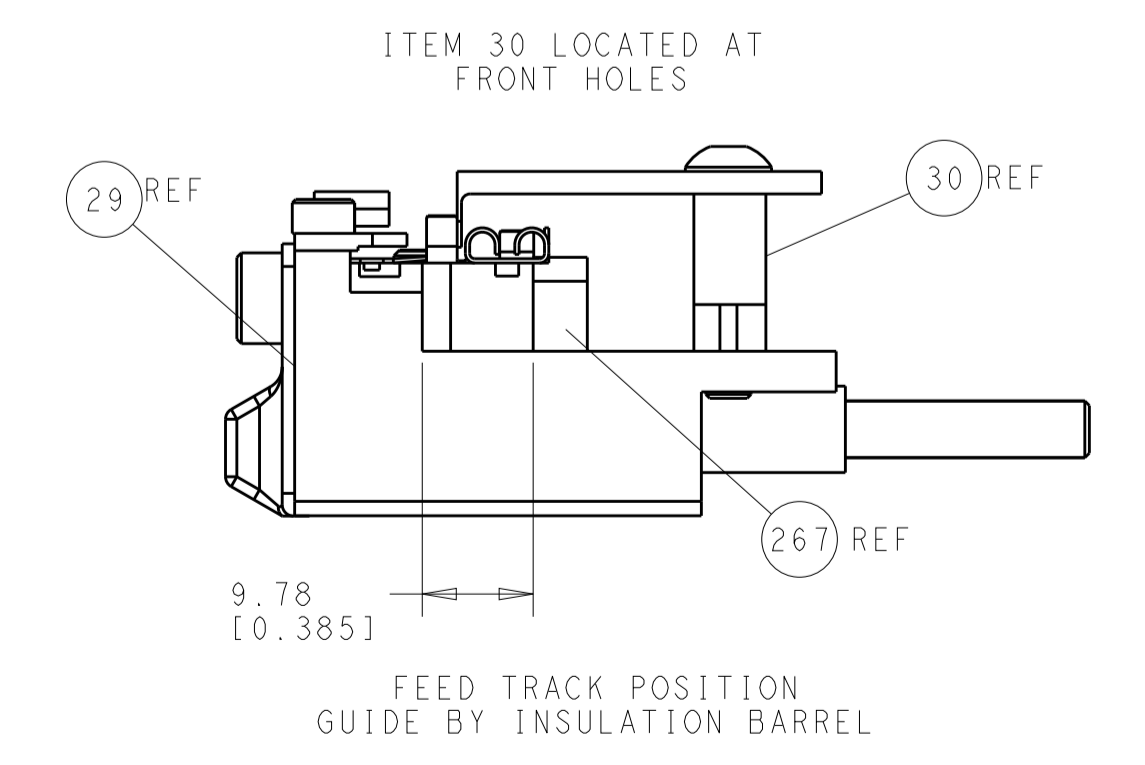
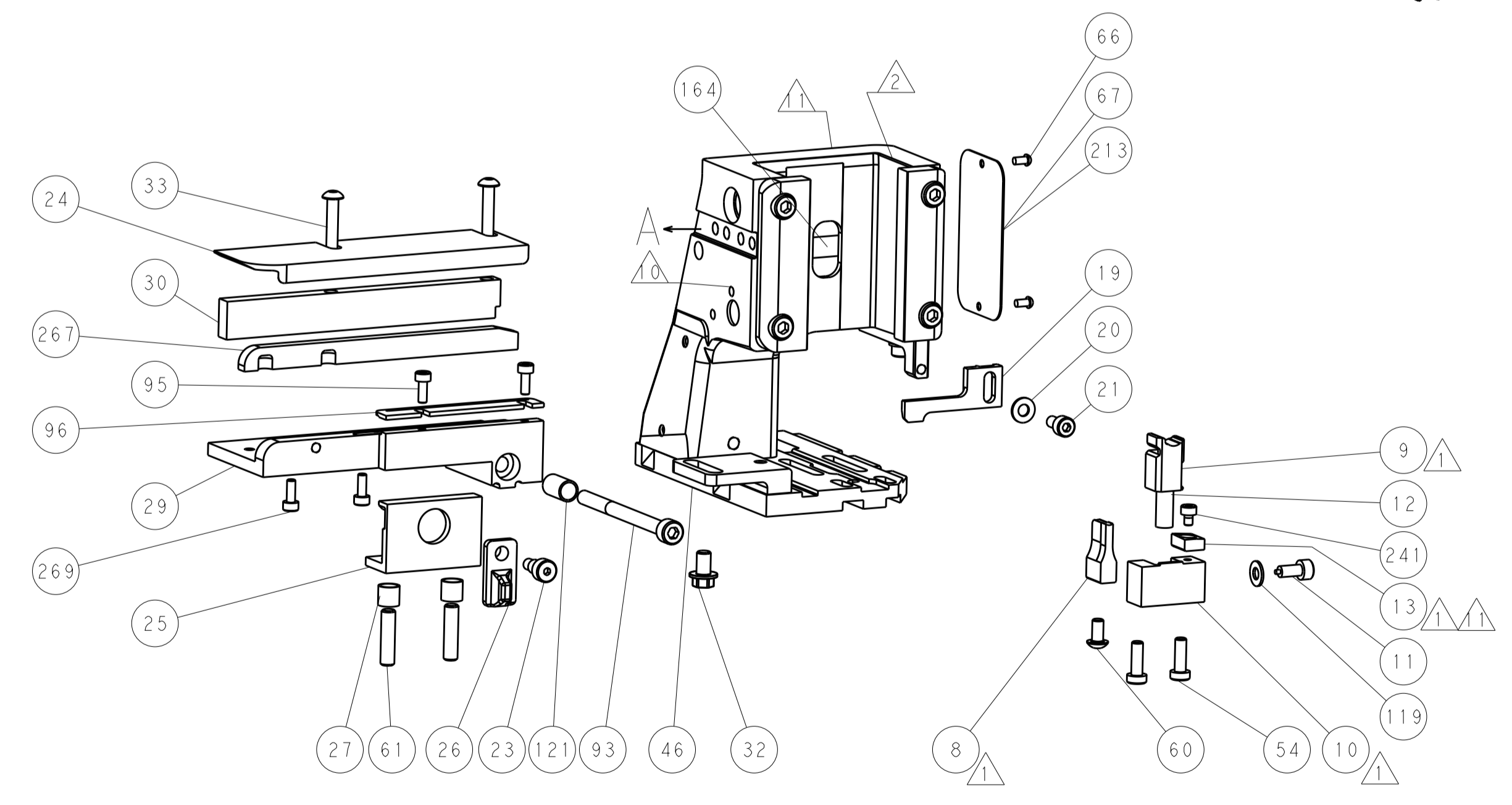
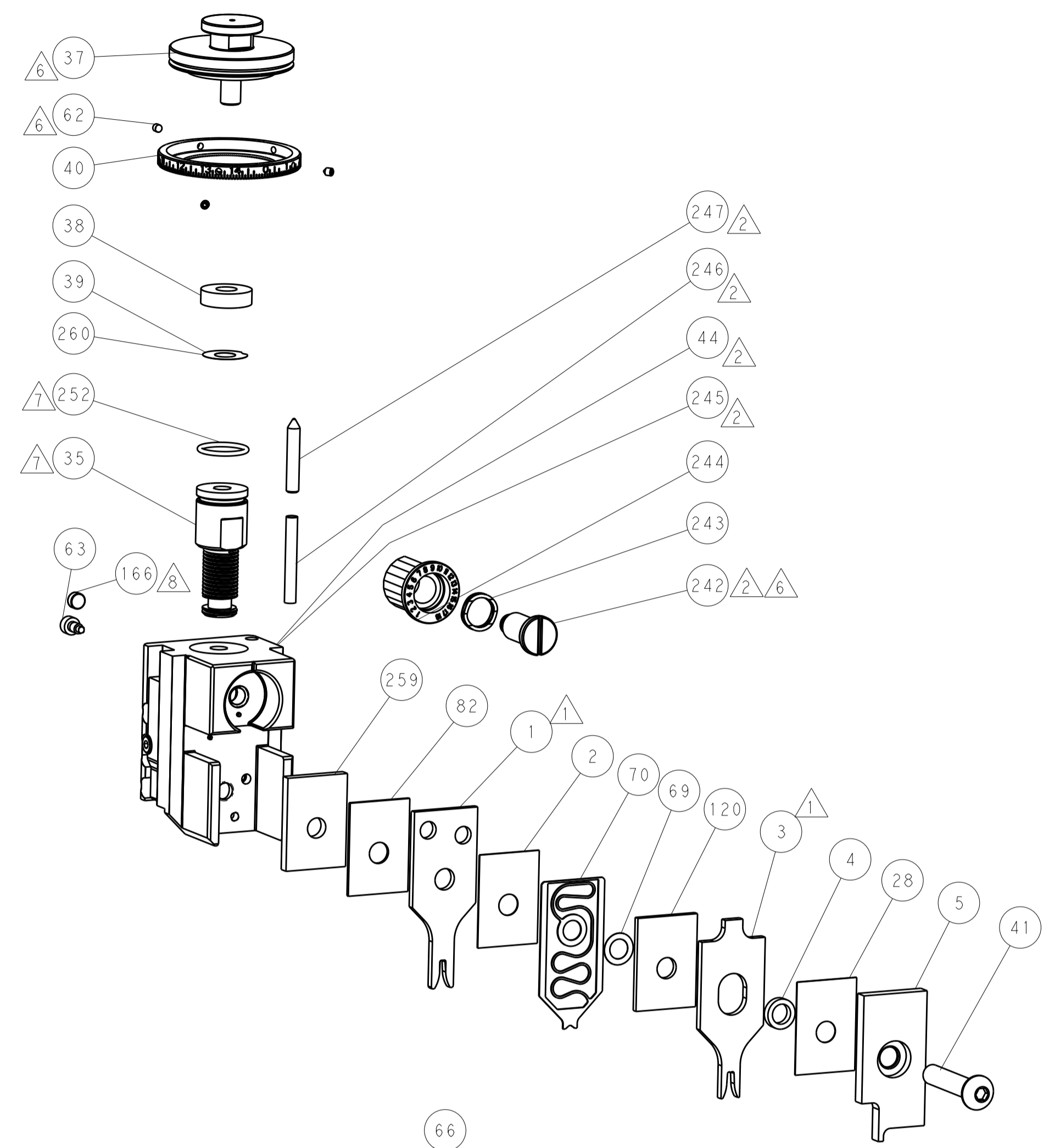
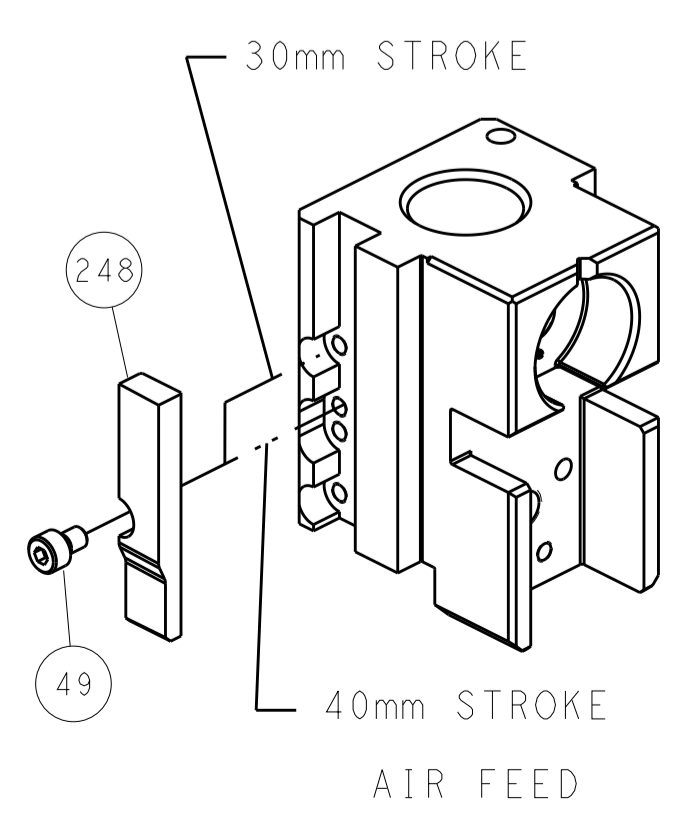
### PNEUMATIC



### SERVO LATCH PLATE



### CAM POSITION



**ATLANTIC VERSION**  
 Shown on sheets 1 of 4 & 2 of 4  
 (Pacific version shown on sheets 3 of 4 & 4 of 4)

<small>THIS DRAWING IS UNPUBLISHED. RELEASED FOR PUBLICATION BY TYCO ELECTRONICS CORPORATION. ALL RIGHTS RESERVED.</small>		DWN: R. KNEPPER 02-Nov-13 CHK: G. BAILEY 02-Nov-13 APVD: M. CLIFFORD 02-Nov-13	TE Connectivity Harrisburg, PA 17105-3608
DIMENSIONS: mm TOLERANCES UNLESS OTHERWISE SPECIFIED: 0 PLC ±0.5 1 PLC ±0.5 2 PLC ±0.13 3 PLC ±0.013 4 PLC ±0.001 ANGLES ±0.0001		NAME: Ocean Side Feed Applicator PRODUCT SPEC: APPLICATION SPEC: SIZE: A1 CAGE CODE: 00779 DRAWING NO: C=2266083	RESTRICTED TO:
MATERIAL:		WEIGHT:	SCALE: 1:2 SHEET: 2 of 4 REV: A

APPLICATOR STYLE CONVERSION CHART. Table with columns for CONVERT TO, PART NUMBERS REQUIRED, and APPLICATOR DATA.

APPLICATOR DATA. Table with columns for CRIMP SIZE, WIRE, INSUL, and APPLICATOR INSTRUCTIONS.

TERMINAL DATA: LEAR TERMINAL LEAR CRIMP SPECIFICATION. Table with columns for TE TERMINAL, LEAR TERMINAL, TE TERMINAL, LEAR TERMINAL.

WIRE SIZE, CRIMP HEIGHT mm [INCH], CRIMP HEIGHT REFERENCE SETTING, FLY WIRE STRIP LENGTH. Table with columns for WIRE SIZE, CRIMP HEIGHT, CRIMP HEIGHT REFERENCE SETTING, FLY WIRE STRIP LENGTH.



- 1 RECOMMENDED SPARE PARTS
2 GREASE BEARING SURFACES LIGHTLY
3 LUBRICATE DAILY PER THE APPLICATOR INSTRUCTION SHEET SUPPLIED WITH THE APPLICATOR.
4 APPLICATOR SPECIFIC DATA TO BE ENTERED INTO BLANK MEMORY CHIP AT ASSEMBLY. SEE BELOW FOR PART NUMBER:
PNEUMATIC FEED WITH "SMART APPLICATOR" CONVERSION: 8-2266083-4
SERVO FEED WITH "FINE CRIMP HEIGHT ADJUST": 8-2266083-5
5. ADJUSTMENT OF THE STRIPPER MAY BE REQUIRED WHEN MOVING THE APPLICATOR BETWEEN BENCH AND LEADMAKER APPLICATIONS.
6 APPLY PART NUMBER 1-23419-5 LOCTITE TO THREADS OF ITEMS 62 & 242.
7 GREASE THREADS, GROOVE AND O-RING ON ITEMS 139 & 152.
8 MAGNET MUST BE ORIENTED CORRECTLY IN ORDER TO PROPERLY ACTUATE THE COUNTER.
9 CRIMP HEIGHT REFERENCE SETTING WAS THE SETTING USED WHEN THE APPLICATOR WAS QUALIFIED AT THE FACTORY. ADJUSTMENT MAY BE NECESSARY WHEN RUNNING APPLICATOR IN THE FIELD.
10 TERMINAL PITCH NOT COMPATIBLE WITH MECHANICAL FEED.
11 TO CONVERT THE APPLICATOR TO A NON-CARRIER CUTTING STYLE, REMOVE ITEM 13 AND ATTACH TO THE LOCATION ON BACK SIDE OF THE HOUSING. REFER TO INSTRUCTION SHEET FOR ADDITIONAL INFORMATION.
12 SEE CHART FOR FLY WIRE STRIP LENGTHS.

\*WARNING
ON INSTALLATION, SET WIRE DISC, ITEM 40 TO LARGEST WIRE SIZE SETTING. USE OF SETTINGS BELOW MINIMUM REQUIRED CRIMP HEIGHT SETTING WILL CAUSE DAMAGE TO CRIMP TOOLING.

Table with columns for PART NO, DESCRIPTION, ITEM NO. Rows include SCR, SKT HD CAP, FENCE, SPACER, PRECISION, FINE ADJUST HEAD ASM, PACIFIC STYLE, PUSH ROD, AIR FEED, BUSHING, LCH5-12, MISUMI, SPRING, COMPRESSION.

PACIFIC VERSION
Shown on sheets 3 of 4 & 4 of 4
(Atlantic version shown on sheets 1 of 4 & 2 of 4)

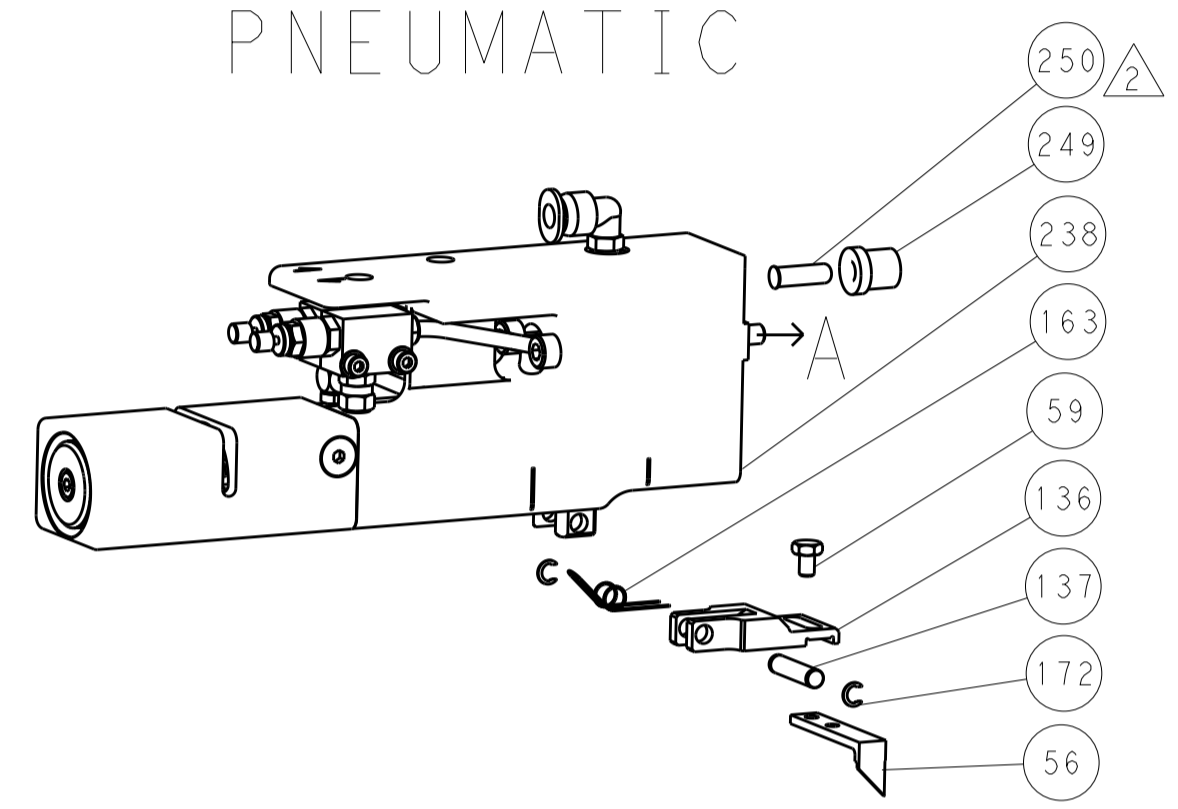
REVISIONS table with columns for P, LTR, DESCRIPTION, DATE, DWN, APVD.

Main parts list table with columns for P, LTR, DESCRIPTION, DATE, DWN, APVD. Includes items like CAM, SNAIL, INSULATION ADJUSTMENT, WASHER, WAVE SPRING, CREST-TO-CREST, RETAINER, INSULATION DIAL, SCR, SKT HD CAP, SHCS, LOW HEAD, RoHS, M5 X 16, AIR FEED MODULE, TAG IDENTIFICATION, SPACER, FEEDER, RING, RETAIN, EXTERN, 3/16 CRESCENT, MAGNET, RARE EARTH HIGH ENERGY, COUNTER, MAGNETIC, SPRING, FEED FINGER, O-RING, .801 ID, .070 DIA. MAT., FEED CAM, AIR FEED, DETENT PIN, SCR, BHSC, RoHS (M4 X 16), SHCS, LOW HEAD, RoHS, M4 X 20, APPLICATOR BASIC ASSEMBLY, SF, RAM, STEPPED, ASIAN STYLE, SIDE FEED, BOLT, ADJUSTMENT, PIN, RETAIN, GRVD, 3/16 X .854, HOLDER, FEED FINGER, AF, MEMORY CHIP, PROGRAMMED, SERVO FEED LATCH ASM, SPRING, COMPRESSION, SPACER, CRIMPER, WASHER, FLAT, REG M4, FEED FINGER ASSEMBLY, SF, FRONT STRIP GUIDE, SCR, SKT HD CAP, RoHS, M3 X 8.0, SCR, SKT HD CAP, RoHS, M5 X 65, SPACER, CRIMPER, DOCUMENTATION PACKAGE, DEPRESSOR, WIRE, WASHER, SPACER, TAG IDENTIFICATION, SCREW, DRIVE, RH, RoHS, 2 x .188, LIMITER, ADJUSTMENT BOLT, SCR, SET, SOC, CONE POINT, M3 x 4.0, SCR, SET, FLT POINT M5 X 20.0, SCR, HEX HD CAP, M4 X 6.0, PAWL, FEED, SCR, SKT HD CAP M4 X 6.0, SCR, BHSC, RoHS (M8 X 40), DISC, NUMBERED FA WIRE ADJUSTMENT, APPLICATOR SHIM PACK, RAM WASHER, PRECISION, SCR, BHSC, RoHS (M4 X 20), HEX HEAD, FLANGED, M5 x 8mm LONG, SPACER, STRIP GUIDE, PLATE, STRIP GUIDE, SPACER, CRIMPER, SPRING, COMPRESSION, LEVER, DRAG RELEASE, DRAG, TERMINAL, STRIP GUIDE, SCR, SKT HD SHLDR 5.0 DIA X 6.0, SCR, SKT HD CAP, RoHS, M4 X 8.0, WASHER, FLAT, REG M4, STRIPPER, SIDE FEED, INSERT, SHEAR, SPRING, COMPRESSION, STOP, SHEAR, SHEAR HOLDER, FRONT, FLOATING SHEAR, FRONT, ANVIL, COMBINATION, DEPRESSOR, SHEAR, BLOCK, CRIMPER SPACER, CRIMPER, INSULATION F, SPACER, CRIMPER, CRIMPER, WIRE PREMIUM.

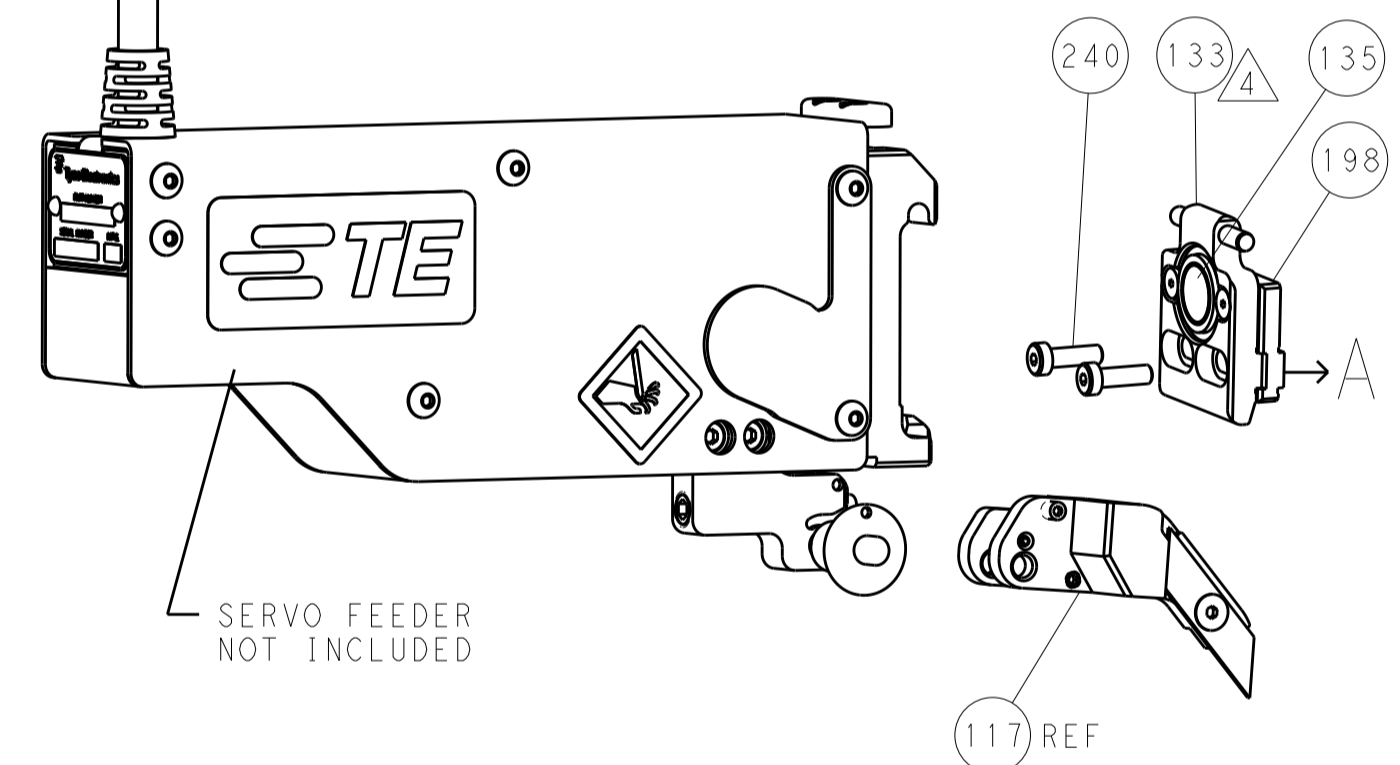
Technical drawing header table with columns for DIMENSIONS, TOLERANCES UNLESS OTHERWISE SPECIFIED, MATERIAL, FINISH, WEIGHT, SCALE, SHEET, REV.

LOC		DIST		REVISIONS			
A	66	P	LTM	DESCRIPTION	DATE	DWN	APVD
		-	-	SEE SHEET 1	-	-	-

### FEED TYPE PNEUMATIC



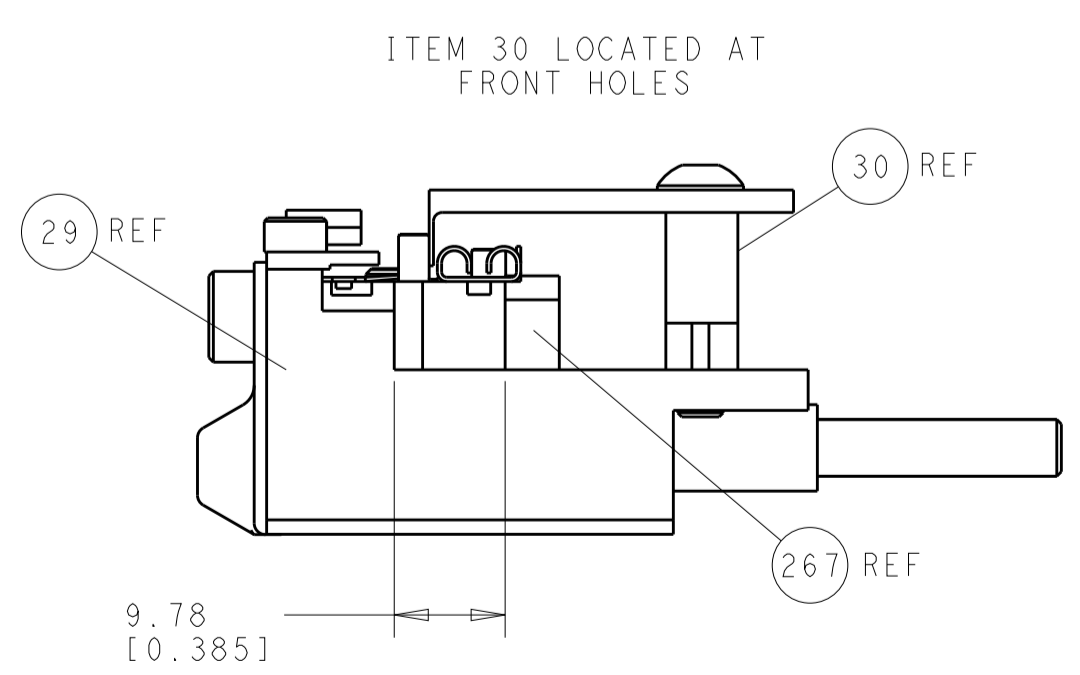
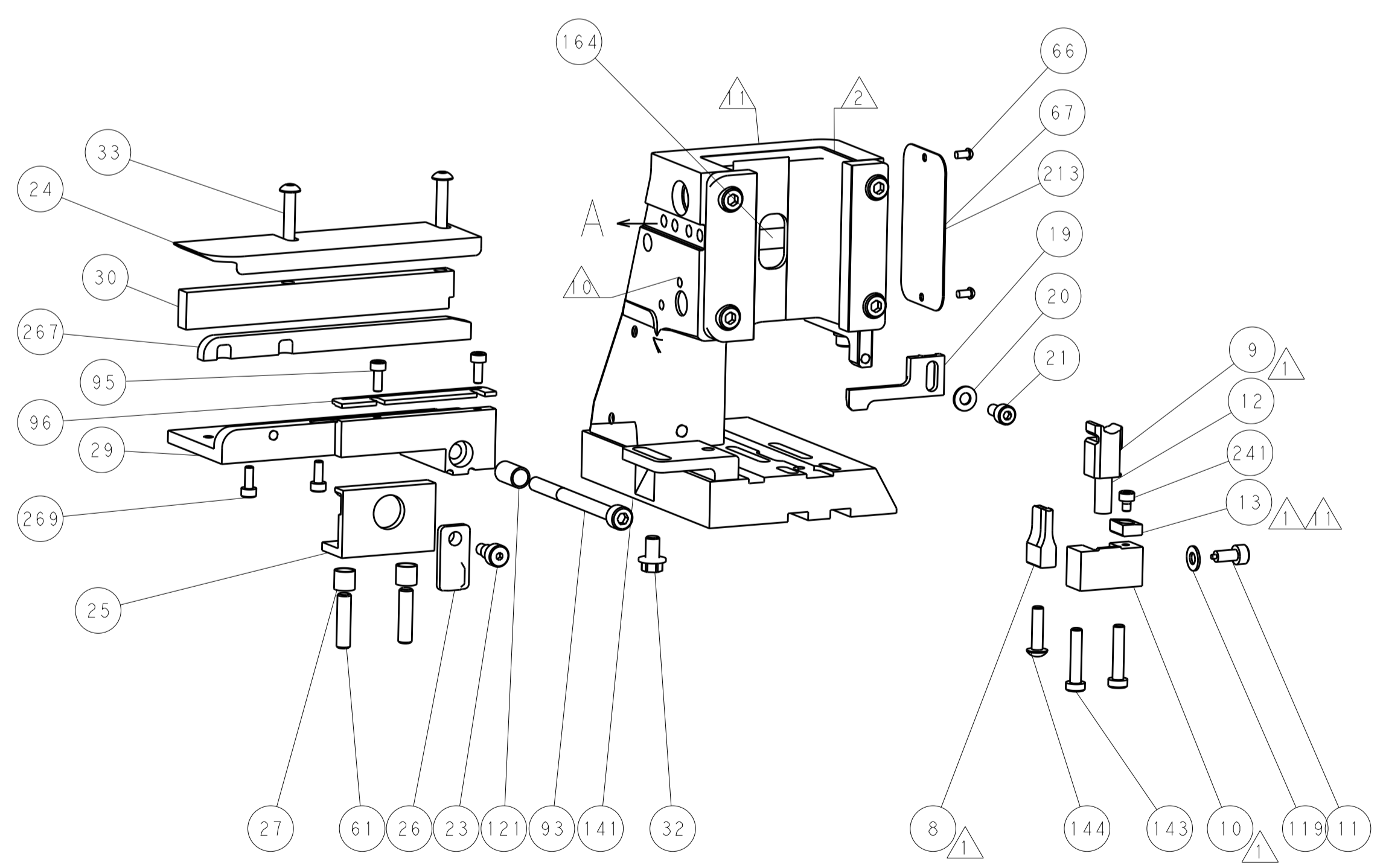
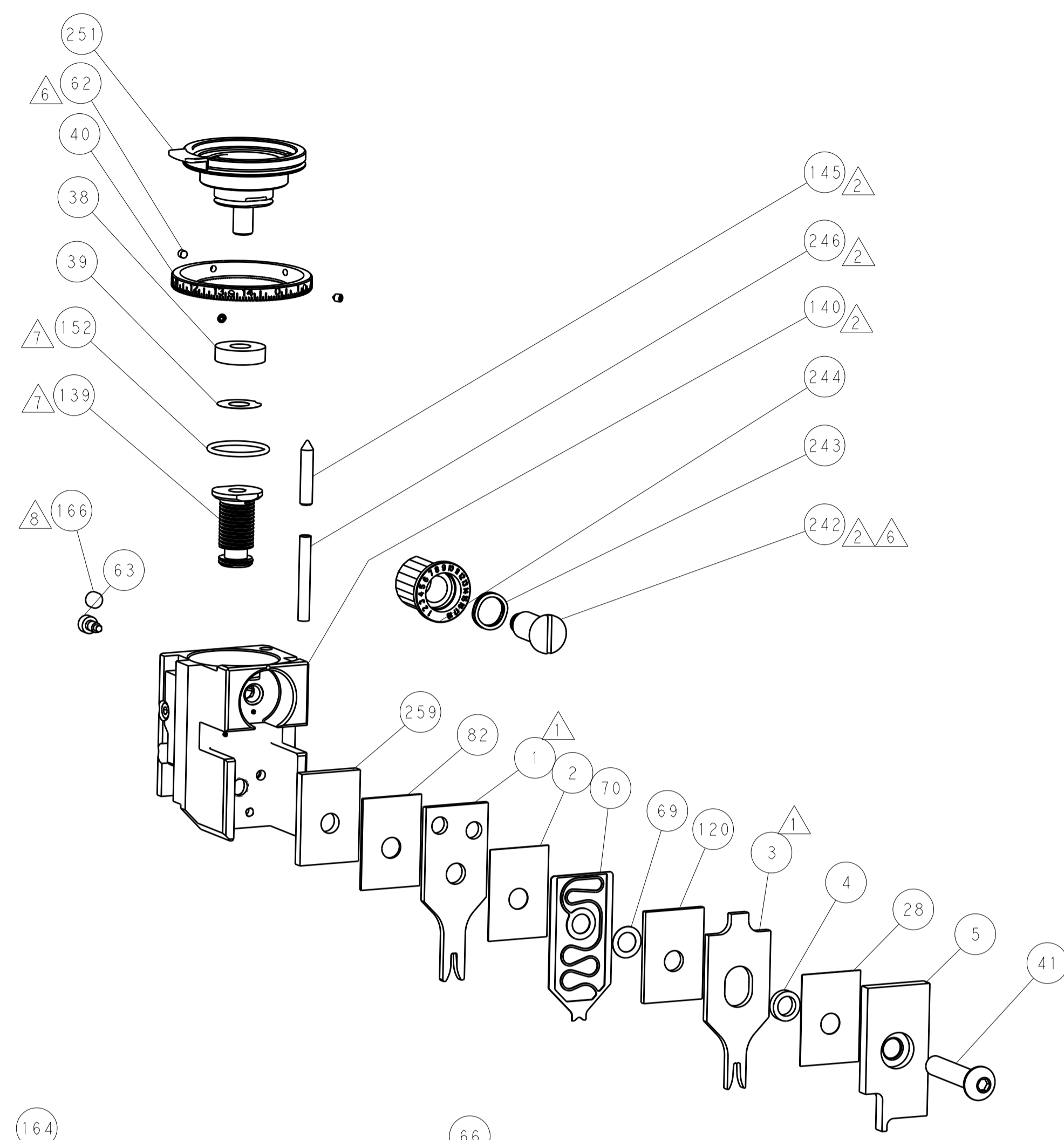
### SERVO LATCH PLATE



### CAM POSITION



AIR FEED



FEED TRACK POSITION  
GUIDE BY INSULATION BARREL

**PACIFIC VERSION**  
 Shown on sheets 3 of 4 & 4 of 4  
 (Atlantic version shown on sheets 1 of 4 & 2 of 4)

<small>THE DRAWING IS UNPUBLISHED. IT IS THE PROPERTY OF TYCO ELECTRONICS CORPORATION. IT IS TO BE USED ONLY FOR THE PROJECT AND UNDER THE AUTHORITY OF THE DESIGNING ORGANIZATION. IT IS NOT TO BE REPRODUCED OR COPIED IN ANY MANNER WITHOUT THE WRITTEN PERMISSION OF TYCO ELECTRONICS CORPORATION.</small>		DWN: R. KNEPPER 02-Nov-13 CHK: G. BAILEY 02-Nov-13 APVD: M. CLIFFORD 02-Nov-13	NAME: STE Connectivity Harrisburg, PA 17105-3608
DIMENSIONS: mm TOLERANCES UNLESS OTHERWISE SPECIFIED: 0 PLC ±.5 1 PLC ±0.5 2 PLC ±0.13 3 PLC ±0.013 4 PLC ±0.001 ANGLES ±.1	PRODUCT SPEC: APPLICATION SPEC: WEIGHT: A1 00779 SCALE: 1:2	DRAWING NO: C-2266083 SHEET: 4 of 4 REV: A	RESTRICTED TO:
Customer Accessible Production Drawing			