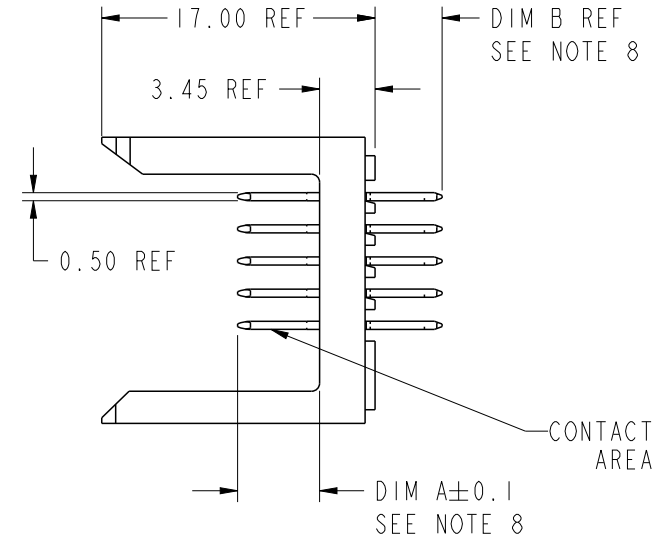
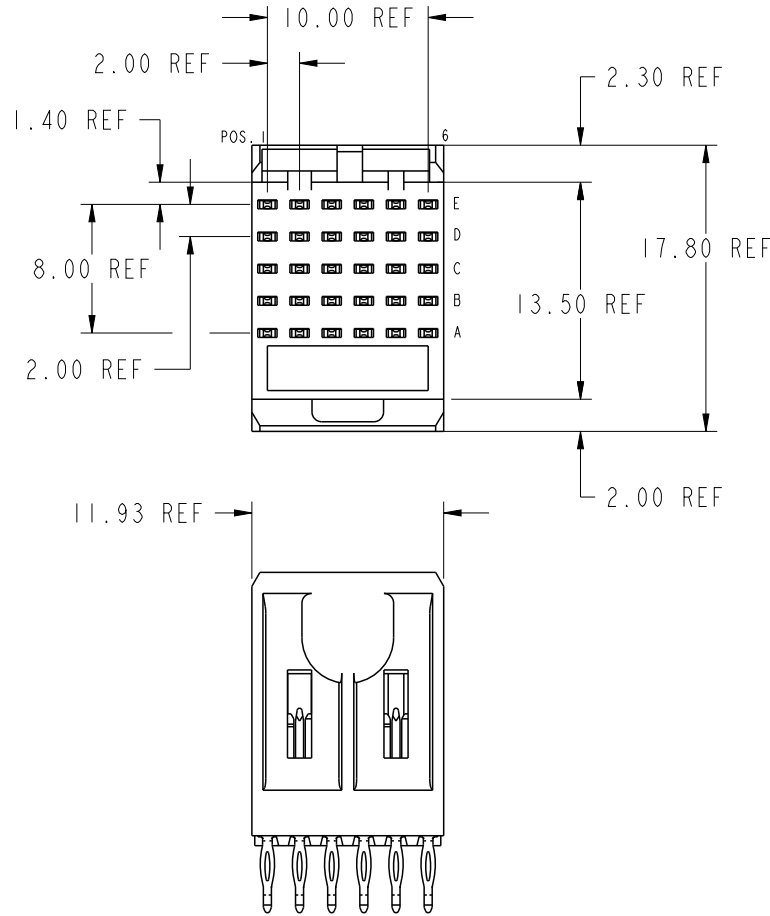
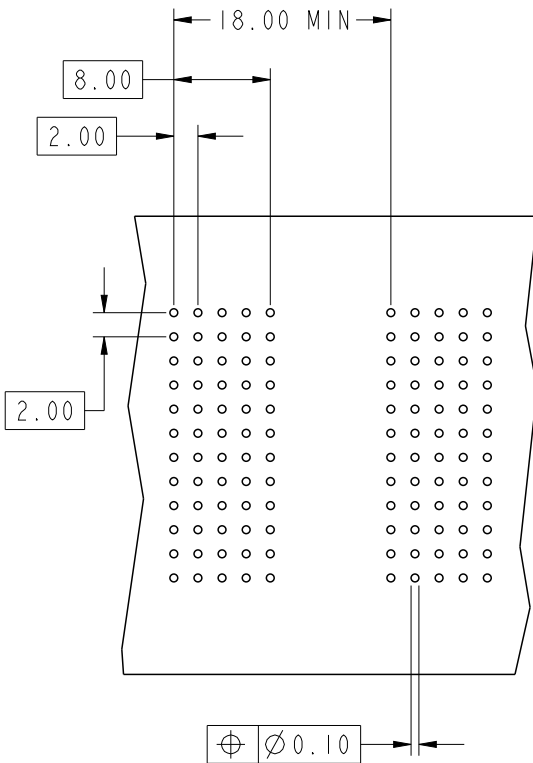


PRODUCT NUMBER
85674-XYX OR 85674-XXXX
85674-XYXLF OR 85674-XXXXLF



spec ref -		dr <a href="#">Terran Huang</a> 2010/07/09		projection 	MM 	size A4	scale 2:10
tolerance std ISO 406 ISO 1102		eng <a href="#">Narayanan, Aru</a> 2018/08/10				ecn no <a href="#">ELX-I-30921-1</a>	
TOLERANCES UNLESS OTHERWISE SPECIFIED		chr -				rel level <b>Released</b>	
surface		appr <a href="#">K-Paul Biju</a> 2018/08/10		product family METRAL		rev	
ISO 1302 ✓	linear	0.X	±0.3	title METRAL SIGNAL HEADER 1 MOD, 5 ROW PRESS-FIT		dwg no 85674	
	angular	0°	±2°			rev <b>CJ</b>	
cat. no. *				Product - Customer Drw		sheet 1 of 10	



REQUIRED PCB BOARD LAYOUT  
COMPONENT SIDE  
SEE PRINT 58351 FOR  
ADDITIONAL PCB INFORMATION

KEY (SIGNAL PRESS-FIT)		
CODE	DIMENSIONS	
	DIM "A" MATE	DIM "B" TAIL
1	5.00	4.30
2	5.75	4.30
3	6.50	4.30
4	7.25	4.30
5	5.00	13.60
6	5.75	13.60
7	6.50	13.60
8	7.25	13.60
11	6.50	17.00
19	8.00	4.30
20	8.00	13.60
21	8.00	17.00
22	5.00	12.10
29	8.00	14.60
30	5.00	12.90
31	5.75	12.90
40	5.00	15.60
41	6.50	15.60
49	5.75	15.10
52	8.00	15.10
59	5.00	11.80
61	6.50	11.80
64	5.75	14.90
65	5.00	16.30
67	7.25	16.30

spec ref	*	dr	Terran Huang	2010/07/09	projection	MM	size	A4	scale	8:5		
tolerance std	TOLERANCES UNLESS OTHERWISE SPECIFIED	eng	Narayanan, Aru	2018/08/10			ecn no	ELX-I-30921-1				
ISO 406 ISO 1102		chr	-	-			rel level	Released				
surface	3.200	appr	K-Paul Biju	2018/08/10	product family	METRAL						
ISO 1302	linear	Amphenol FCI		title	METRAL SIGNAL HEADER				dwg no	85674	rev	CJ
	angular	0°	±2°		1 MOD, 5 ROW PRESS-FIT							
		0.X	±0.3		cat. no.	-	Product - Customer Drw	sheet 2 of 10				
		0.XX	±0.13									
		0.XXX	±0.05									

A

B

C

D

METRAL P/N	ROW	CONTACT CODE MOD. I						METRAL P/N	ROW	CONTACT CODE MOD. I						METRAL P/N	ROW	CONTACT CODE MOD. I						METRAL P/N	ROW	CONTACT CODE MOD. I						METRAL P/N	ROW	CONTACT CODE MOD. I													
		1	2	3	4	5	6			1	2	3	4	5	6			1	2	3	4	5	6			1	2	3	4	5	6			1	2	3	4	5	6								
85674-X01	E	1	1	1	1	1	1	85674-X05	E	8	8	8	8	8	8	85674-X09	E	5	5	5	5	5	5	85674-X13	E	1	1	-	1	1	1	85674-X17	E	22	22	22	22	22	22	85674-X21	E	19	2	4	4	2	4
	D	1	1	1	1	1	1		D	8	8	8	8	8	8		D	5	5	5	5	5	5		D	1	1	-	1	1	1		D	22	22	22	31	22	22		D	19	2	4	4	2	4
-----	C	1	1	2	2	2	2	-----	C	8	8	8	8	8	8	-----	C	5	5	5	5	5	5	-----	C	1	1	-	-	-	-	-----	C	22	22	22	22	22	22	-----	C	19	2	4	4	2	4
85674-X01LF	B	1	1	1	1	1	1	85674-X05LF	B	5	5	5	5	5	5	85674-X09LF	B	5	5	5	5	5	8	85674-X13LF	B	1	1	-	1	1	1	:85674-X17LF	B	22	22	22	22	22	22	85674-X21LF	B	19	2	4	4	2	4
	A	1	1	1	1	1	1		A	5	5	5	5	5	5		A	5	5	5	5	5	8		A	1	1	-	1	1	1		A	22	22	22	22	7	22		A	19	2	4	4	2	4

A

B

C

D

spec ref	*	dr	Terran Huang	2010/07/09	projection	MM	size	A4	scale	1:10		
tolerance std	TOLERANCES UNLESS OTHERWISE SPECIFIED	eng	Narayanan, Aru	2018/08/10			ecn no	ELX-I-30921-1				
ISO 406		chr	-	-				rel level	Released			
ISO 1102		appr	K-Paul Biju	2018/08/10	product family	METRAL			rev			
surface 3.200	linear	0.X	±0.3	<b>Amphenol FCI</b>	METRAL SIGNAL HEADER			dwg no	85674		rev	CJ
		0.XX	±0.13		1 MOD, 5 ROW PRESS-FIT							
	angular	0°	±2°		cat. no.	-	Product - Customer Drw		sheet 3 of 10			

METRAL P/N	ROW	CONTACT CODE MOD. I					METRAL P/N	ROW	CONTACT CODE MOD. I					METRAL P/N	ROW	CONTACT CODE MOD. I					METRAL P/N	ROW	CONTACT CODE MOD. I					METRAL P/N	ROW	CONTACT CODE MOD. I																
		1	2	3	4	5			6	1	2	3	4			5	6	1	2	3			4	5	6	1	2			3	4	5	6	1	2	3	4	5	6							
85674-X25	E	2	2	2	2	2	85674-X29	E	3	3	3	3	1	3	85674-X33	E	2	2	2	2	2	85674-X37	E	2	2	2	2	2	4	85674-X41	E	1	1	1	1	2	3	85674-X45	E	3	3	3	3	2	3	
	D	2	2	2	2	2		D	3	3	3	3	3	D		2	2	2	2	2	D		2	2	2	2	1	3	D		3	3	3	3	3	3										
	C	2	2	2	2	2		C	3	3	3	3	3	C		2	2	4	4	2	2		C	2	2	2	2	2	3		C	3	3	3	3	3	3									
	B	2	-	-	-	2		B	3	3	3	3	3	B		2	2	2	2	2	2		B	2	2	2	2	2	3		B	3	3	3	3	3	3									
85674-X25LF	A	2	-	2	2	-	85674-X29LF	A	3	3	3	3	3	3	85674-X33LF	A	2	2	4	4	2	2	85674-X37LF	A	2	2	2	2	2	4	85674-X41LF	A	2	2	1	1	1	3	85674-X45LF	A	3	3	3	3	3	3

spec ref	*	dr	Terran Huang	2010/07/09	projection		size	A4	scale	1:10
tolerance std	ISO 406 ISO 1102	eng	Narayanan, Aru	2018/08/10	chr	-	ecn no	ELX-I-30921-1		
surface	3.200	appr	K-Paul Biju	2018/08/10	product family	METRAL	rel level	Released		
ISO 1302	linear	0.X	±0.3	Amphenol FCI	METRAL SIGNAL HEADER		dwg no	85674	rev	CJ
		0.XX	±0.13		1 MOD, 5 ROW PRESS-FIT					
	angular	0°	±2°		cat. no.	-	Product - Customer Drw	sheet	4 of 10	

A

B

C

D

METRAL P/N	ROW	CONTACT CODE MOD. I					
		1	2	3	4	5	6
85674-X49	E	3	3	3	3	3	3
	D	3	3	3	3	3	3
	C	-	-	3	3	3	3
	B	-	-	-	-	3	3
	A	3	3	-	-	3	3
85674-X49LF	E	3	3	3	3	3	3
	D	3	3	3	3	3	3
	C	-	-	3	3	3	3
	B	-	-	-	-	3	3
	A	3	3	-	-	3	3

spec ref	*	dr	Terran Huang	2010/07/09	projection	MM	size	A4	scale	1:10					
tolerance std	TOLERANCES UNLESS OTHERWISE SPECIFIED	eng	Narayanan, Aru	2018/08/10			ecn no	ELX-I-30921-1							
ISO 406		chr	-	-			rel level	Released							
ISO 1102		appr	K-Paul Biju	2018/08/10	product family	METRAL			rev						
surface	3.200	Amphenol FCI			METRAL SIGNAL HEADER			dwg no	85674						
linear	0.X										±0.3	cat. no.	-	Product - Customer Drw	sheet 5 of 10
	0.XX										±0.13				
	0.XXX	±0.05													
ISO 1302	angular	0°	±2°												

Creo File - REV E - 2016-02-12

Amphenol  
FCI

© 2016 AFCl

A

B

C

D

METRAL P/N	ROW	CONTACT CODE MOD. I					
		1	2	3	4	5	6
85674-X73	E	20	6	8	8	6	20
	D	20	6	8	8	6	20
	C	20	6	8	8	6	20
	B	20	6	8	8	6	20
85674-X73LF	A	20	6	8	8	6	20

spec ref	*	dr	Terran Huang	2010/07/09	projection	MM	size	A4	scale	1:10			
tolerance std	ISO 406 ISO 1102	eng	Narayanan, Aru	2018/08/10			ecn no	ELX-I-30921-1					
surface	3.200	chr	-	-			rel level	Released					
ISO 1302	linear	appr	K-Paul Biju	2018/08/10	product family	METRAL			rev	CJ			
	0.X ±0.3	Amphenol FCI			METRAL SIGNAL HEADER 1 MOD, 5 ROW PRESS-FIT			dwg no	85674				
	0.XX ±0.13							cat. no.	-	Product - Customer Drw	sheet	6 of 10	
	0.XXX ±0.05												
	angular	0° ±2°											

Creo File - REV E - 2016-02-12

A

B

C

D

METRAL P/N	ROW	CONTACT CODE MOD. I					METRAL P/N	ROW	CONTACT CODE MOD. I					METRAL P/N	ROW	CONTACT CODE MOD. I					METRAL P/N	ROW	CONTACT CODE MOD. I																												
		1	2	3	4	5			6	1	2	3	4			5	6	1	2	3			4	5	6	1	2	3	4	5	6																				
85674-X97	E	4	-	4	4	4	3	85674-X101	E	2	2	2	2	2	1	85674-X105	E	7	8	7	8	7	8	85674-X109	E	2	2	2	2	2	2	85674-X113	E	6	7	6	4	6	4	6	4	6	4	85674-X117	E	-	4	2	4	2	4
-----	D	4	-	4	4	4	3	-----	D	2	2	2	2	2	2	-----	D	7	8	7	8	7	8	-----	D	3	2	2	2	2	2	-----	D	6	7	6	4	6	4	6	4	6	4	-----	D	-	4	2	4	2	4
85674-X97LF	C	4	-	4	4	4	3	85674-X101LF	C	2	1	2	2	2	2	85674-X105LF	C	8	8	8	8	8	8	85674-X109LF	C	4	2	2	2	2	4	85674-X113LF	C	6	7	6	4	6	4	6	4	6	4	85674-X117LF	C	-	4	4	4	4	4
-----	B	4	-	4	4	4	3	-----	B	2	1	2	2	1	2	-----	B	6	8	6	8	6	8	-----	B	2	2	2	2	2	2	-----	B	6	7	6	4	6	4	6	4	6	4	-----	B	-	4	2	4	2	4
-----	A	4	-	4	4	4	3	-----	A	2	2	2	2	1	2	-----	A	6	8	6	8	6	8	-----	A	2	2	2	2	2	2	-----	A	6	7	6	4	6	4	6	4	6	4	-----	A	-	4	2	4	2	4

A

B

C

D

spec ref	*	dr	Terran Huang	2010/07/09	projection	MM	size	A4	scale	1:10
tolerance std	ISO 406 ISO 1102	eng	Narayanan, Aru	2018/08/10			ecn no	ELX-I-30921-1		
	TOLERANCES UNLESS OTHERWISE SPECIFIED	chr	-	-				rel level	Released	
surface	3.200	appr	K-Paul Biju	2018/08/10	product family	METRAL			rev	CJ
linear	0.X ±0.3 0.XX ±0.13 0.XXX ±0.05	Amphenol FCI				METRAL SIGNAL HEADER			dwg no	85674
angular	0° ±2°					1 MOD, 5 ROW PRESS-FIT			cat. no.	-

A

B

C

D

METRAL P/N	ROW	CONTACT CODE MOD. I						METRAL P/N	ROW	CONTACT CODE MOD. I						METRAL P/N	ROW	CONTACT CODE MOD. I						METRAL P/N	ROW	CONTACT CODE MOD. I						METRAL P/N	ROW	CONTACT CODE MOD. I													
		1	2	3	4	5	6			1	2	3	4	5	6			1	2	3	4	5	6			1	2	3	4	5	6			1	2	3	4	5	6	1	2	3	4	5	6		
85674-X121	E	6	6	6	5	6	6	85674-X125	E	1	2	2	2	2	2	85674-X129	E	19	2	2	2	2	2	85674-X133	E	59	7	31	7	59	7	85674-X137	E	2	2	2	2	2	2	85674-X141	E	1	1	1	1	1	1
-----	D	6	6	6	6	6	6	-----	D	1	2	2	2	2	2	-----	D	2	2	2	2	2	2	-----	D	59	7	31	7	59	7	-----	D	2	2	2	2	2	1	-----	D	1	1	3	3	1	1
85674-X121LF	C	6	6	6	6	6	6	85674-X125LF	C	1	2	2	2	2	2	85674-X129LF	C	2	2	2	2	2	2	85674-X133LF	C	59	7	31	7	59	7	85674-X137LF	C	-	-	-	-	-	-	85674-X141LF	C	1	1	3	3	1	1
-----	B	6	6	6	6	6	6	-----	B	1	2	2	2	2	2	-----	B	1	2	2	2	2	2	-----	B	59	7	31	7	59	7	-----	B	2	2	2	2	2	2	-----	B	1	1	1	1	1	1
-----	A	6	6	6	6	6	6	-----	A	1	2	2	2	2	2	-----	A	2	1	2	2	2	2	-----	A	59	7	31	7	59	7	-----	A	2	2	2	2	2	1	-----	A	1	1	1	1	1	1

A

B

C

D

spec ref	*	dr	Terran Huang	2010/07/09	projection		size	A4	scale	1:10
tolerance std	ISO 406 ISO 1102	eng	Narayanan, Aru	2018/08/10	chr	-	ecn no	ELX-I-30921-1	rel level	Released
surface	3.200	appr	K-Paul Biju	2018/08/10	product family	METRAL	rel level	Released		
ISO 1302	linear	0.X	±0.3	Amphenol FCI	METRAL SIGNAL HEADER		dwg no	85674	rev	CJ
		0.XX	±0.13		1 MOD, 5 ROW PRESS-FIT					
	angular	0°	±2°		cat. no.	-	Product - Customer Drw	sheet 8 of 10		



A

B

C

D

METRAL P/N	ROW	CONTACT CODE MOD. I					
		1	2	3	4	5	6
85674-X145	E	3	3	3	3	2	1
	D	3	3	3	3	2	1
	C	3	3	3	3	2	1
	B	3	3	3	3	2	1
	A	3	3	3	3	2	1

spec ref	*	dr	Terran Huang	2010/07/09	projection	size	A4	scale	1:10				
tolerance std	TOLERANCES UNLESS OTHERWISE SPECIFIED	eng	Narayanan, Aru	2018/08/10		MM	ecn no	ELX-I-30921-1					
ISO 406		chr	-	-				rel level	Released				
ISO 1102		appr	K-Paul Biju	2018/08/10	product family	METRAL		rev					
surface 3.200	linear	Amphenol FCI			METRAL SIGNAL <sup>2</sup> HEADER 1 MOD, 5 ROW PRESS-FIT		dwg no	85674					
								0.X ±0.3		cat. no.	Product - Customer Drw		sheet 9 of 10
	angular							0° ±2°					

PRODUCT NUMBER
85674-XYX OR 85674-YYYY
85674-XYLX OR 85674-YYYYLX

NOTES:

- FOR DIM A AND B SEE SHEET 2 AND UP.
- BODY MATERIAL: LIQUID CRYSTAL  
POLYMER 30 % GLASS.  
FLAME RETARDANT ACC. UL 94-V0.
- PIN MATERIAL:  
PHOSPHOR BRONZE.
- PLATING ON PRESS-FIT TAIL:  
85674-XYX IS SnPb  
85674-XYLX IS SN (LEAD FREE)  
PLATING ON CONTACT AREA CONFORMS TO PERFORMANCE LEVEL SHOWN IN TABLE BELOW.
- PRODUCT MARKING:  
PART NUMBER DESIGNATION & BATCH I.D.
- ALL PRODUCTS WITH PART NUMBERS SHOWN IN SUBSEQUENT TABLES WILL BE PACKAGED IN TUBES. IF TRAY PACKAGING IS REQUIRED, A SUFFIX "P" WILL BE ADDED TO THE END OF THE PART NUMBER. EXAMPLE: XXXXX-XXXP
- PRODUCT SPECIFICATION GS-12-180  
APPLICATION SPECIFICATION BUS-20-073
- AFTER INSERTION INTO CIRCUIT BOARD WITH QUALIFIED TOOL.
- THE PRODUCTS WHERE THE PART NUMBER ENDS IN LX MEET THE EUROPEAN UNION DIRECTIVES AND OTHER COUNTRY REGULATIONS AS DESCRIBED IN GS-22-008.

ALL PRODUCTS EXCEPT THOSE WITH PART NUMBERS CONTAINING (DRAWING NO.)-N1--- OR (DRAWING NO.)-N5--- WILL WITHSTAND EXPOSURE TO 260°C FOR 60 SECONDS IN A CONVECTION, INFAR-RED OR VAPOR PHASE REFLOW OVEN. PART NUMBERS (DRAWING NO.)-N1--- AND (DRAWINGS NO.)-N5--- WILL NOT WITHSTAND REFLOW AND Au CONTACT SURFACE OF THE CONTACTS SHALL BE EXPOSED TO A MAXIMUM 140°C FOR NO LONGER THAN 15 SECONDS IN A WAVE SOLDER APPLICATION.

PLATING IN CONTACT AREA		
DASH NUMBER	PERFORMANCE LEVEL	NOTES
-PYY OR -PYXX	0.25 um GOLD MIN.	-
-N1YY OR -N1YYY	TELCORDIA CO (NXT)	-
-N5YY OR -N5YYY	TELCORDIA UE (NXT)	-
-1YY OR -1YYY	TELCORDIA CO	-
-2YY OR -2YYY	TELECOM CLASS	-
-3YY OR -3YYY	IEC CLASS I	-
-5YY OR -5YYY	TELCORDIA UE	-
-9YY OR -9YYY	TELCORDIA CO	-
-N1YXL OR -N1YYXL	TELCORDIA CO (NXT) IEC CLASS I	SEE NOTE 9
-N5YXL OR -N5YYXL	TELCORDIA UE (NXT)	SEE NOTE 9
-1YXL OR -1YYXL	TELCORDIA CO IEC CLASS I	SEE NOTE 9
-2YXL OR -2YYXL	TELECOM CLASS	SEE NOTE 9
-5YXL OR -5YYXL	TELCORDIA UE	SEE NOTE 9

spec ref	*	dr	Terran Huang	2010/07/09	projection	MM	size	A4	scale	1:10	
tolerance std	TOLERANCES UNLESS OTHERWISE SPECIFIED	eng	Narayanan, Aru	2018/08/10			ecn no	ELX-I-30921-1			
ISO 406 ISO 1102		chr	-	-			rel level	Released			
surface 3.200		linear	appr	K-Paul Biju	2018/08/10	product family	METRAL				
ISO 1302	angular	Amphenol FCI		METRAL SIGNAL HEADER			dwg no	85674		rev	CJ
		0.X	±0.3	1 MOD, 5 ROW PRESS-FIT							
		0.XX	±0.13	cat. no.	Product - Customer Drw			sheet 10 of 10			
		0.XXX	±0.05								
		0°	±2°								