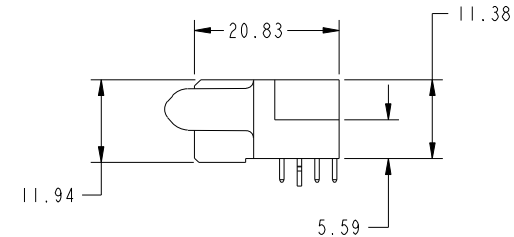
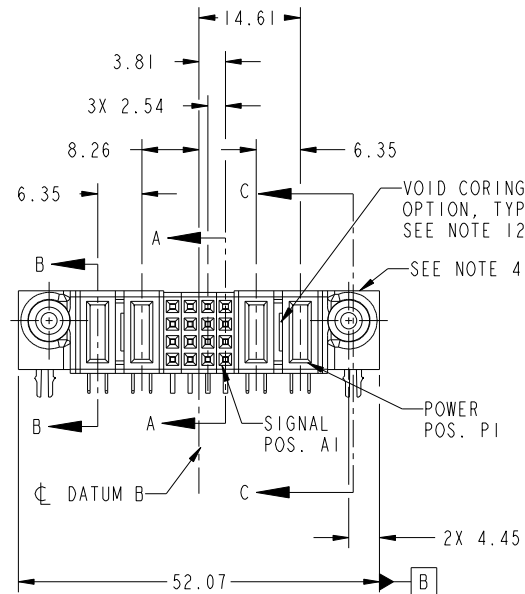
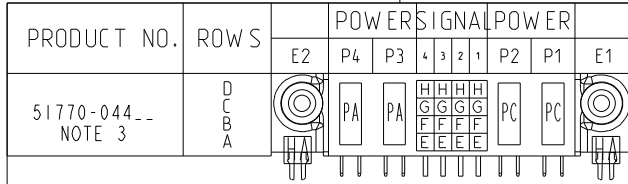


Tous droits strictement reserves. Reproduction ou communication a des tiers interdite sous quelque forme que ce soit sans autorisation écrite du propriétaire. Propriete de c FCI. Droits de reproduction FCI.



All rights strictly reserved. Reproduction or issue to third parties in any form whatever is not permitted without written authority from the proprietor. Property of FCI. Copyright FCI.



| CODE | DIM "M" MATING LENGTH | CONTACT TYPE |
|------|-----------------------|--------------|
| PA   | [1.07]                | POWER        |
| PC   | [2.34]                | POWER        |
| H    | [N/A]                 | SIGNAL       |
| G    | [N/A]                 | SIGNAL       |
| F    | [N/A]                 | SIGNAL       |
| E    | [N/A]                 | SIGNAL       |
| HA   | [N/A]                 | HOLD-DOWN    |

|             |                |    |          |            |             |                                       |  |                               |  |
|-------------|----------------|----|----------|------------|-------------|---------------------------------------|--|-------------------------------|--|
| mat'l code  |                |    |          | SEE NOTE 2 |             | tolerances unless otherwise specified |  | CUSTOMER                      |  |
| ltr         | ecr no.        | dr | date     | linear     | 0.X ± 0.5   | projection                            |  | COPY                          |  |
| A           | DG11-0023      | XQ | 01/20/11 | angles     | 0.XX ± 0.25 | MIM                                   |  | www.fciconnect.com            |  |
|             |                |    |          | dr         | 0.XXX ± 0.1 | 1:1                                   |  | title                         |  |
|             |                |    |          | enr        | 0° ± 2°     | scale                                 |  | 2P + 16S + 2P                 |  |
|             |                |    |          | chr        |             | A                                     |  | R/A STB RECEPTACLE            |  |
|             |                |    |          | appd       |             | A                                     |  | product family PwrBlade code  |  |
|             |                |    |          |            |             | A                                     |  | size 213                      |  |
| sheet index | revision sheet | A  | A        | A          | A           | A                                     |  | dwg no 51770-044 sheet 1 of 4 |  |
|             |                | 1  | 2        | 3          | 4           |                                       |  |                               |  |

**FCI**  
www.fciconnect.com

product family PwrBlade code 213  
size 213  
dwg no 51770-044 sheet 1 of 4

cage code 22526

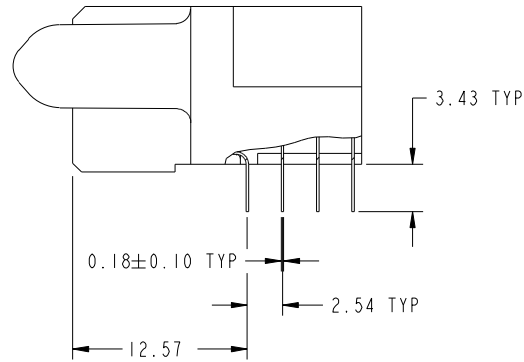
Pro/E

Tous droits strictement reserves. Reproduction ou communication a des tiers interdite sous quelque forme que ce soit sans autorisation écrite du propriétaire. Propriete de c FCI. Droits de reproduction FCI.

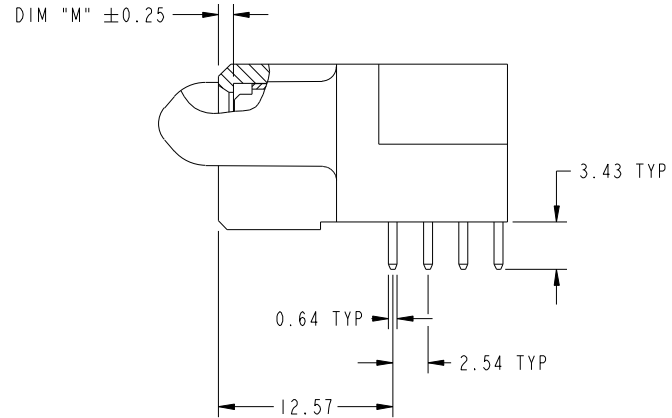


All rights strictly reserved. Reproduction or issue to third parties in any form whatever is not permitted without written authority from the proprietor. Property of FCI. Copyright FCI.

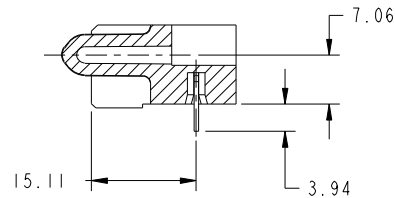
PRODUCT NUMBER  
51770-044--  
NOTE 3



BROKEN-OUT SECTION A-A  
SCALE 2:1



BROKEN-OUT SECTION B-B  
SCALE 2:1



SECTION C-C

|             |         |                |      |            |             |                                       |            |          |                                     |     |           |
|-------------|---------|----------------|------|------------|-------------|---------------------------------------|------------|----------|-------------------------------------|-----|-----------|
| mat'l code  |         |                |      | SEE NOTE 2 |             | tolerances unless otherwise specified |            | CUSTOMER |                                     | FCI |           |
| ltr         | ecm no. | dr             | date | linear     | 0.X ± 0.5   |                                       | COPY       |          | www.fciconnect.com                  |     |           |
| A           |         |                |      |            | 0.XX ± 0.25 |                                       | projection |          | title                               |     |           |
|             |         |                |      |            | 0.XXX ± 0.1 |                                       |            |          | 2P + 16S + 2P<br>R/A STB RECEPTACLE |     |           |
|             |         |                |      | angles     | 0° ± 2°     |                                       |            |          | product family                      |     | code      |
|             |         |                |      | dr         | X0 Wang     | 01/20/11                              | scale      |          | PwrBlade                            |     | 213       |
|             |         |                |      | enr        | Anson Liu   | 01/20/11                              | 1:1        |          | size                                |     | sheet     |
|             |         |                |      | chr        | PM Zheng    | 01/20/11                              |            |          | A                                   |     | 51770-044 |
|             |         |                |      | appd       | Joseph Hsia | 01/20/11                              |            |          |                                     |     | 2 of 4    |
| sheet index |         | revision sheet |      |            |             |                                       |            |          |                                     |     |           |

cage code 22526

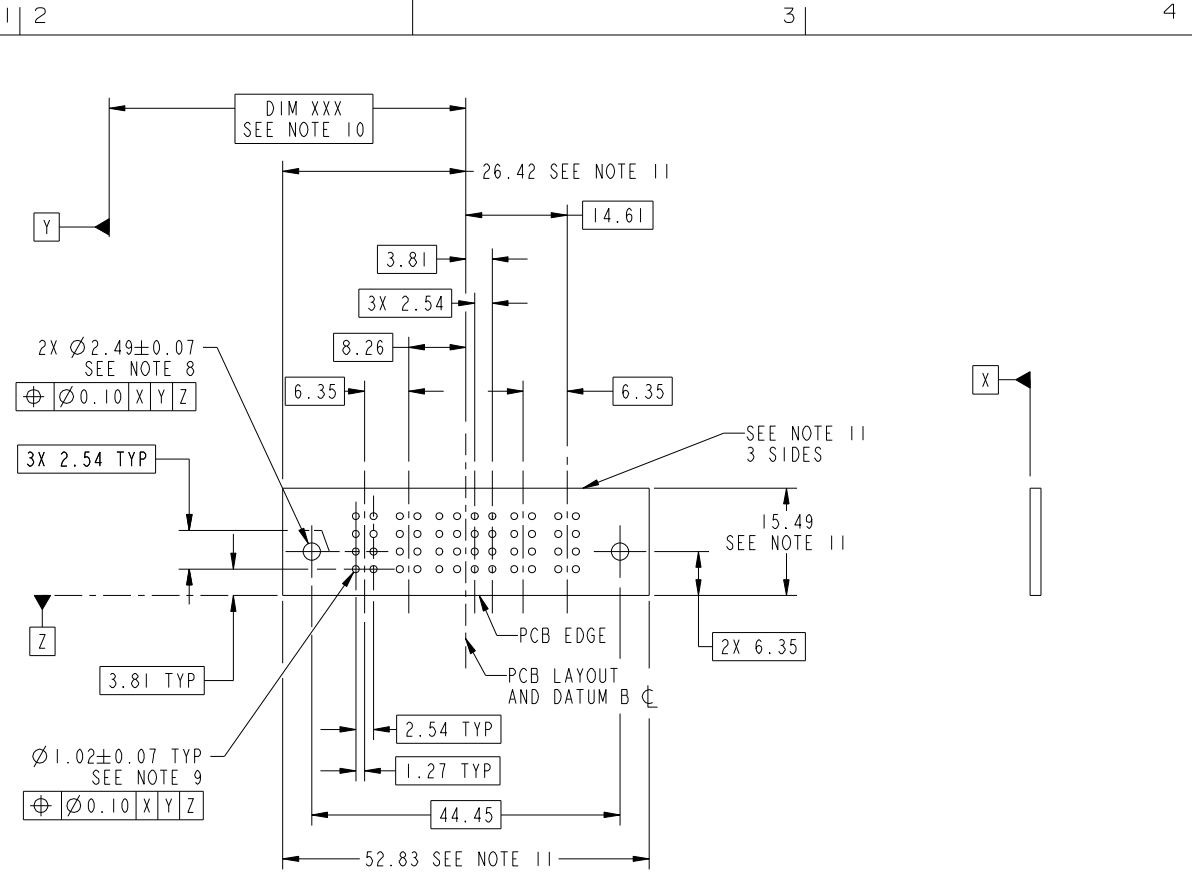
Pro/E

Tous droits strictement reserves. Reproduction ou communication a des tiers interdite sous quelque forme que ce soit sans autorisation écrite du propriétaire. Propriete de c FCI. Droits de reproduction FCI.



All rights strictly reserved. Reproduction or issue to third parties in any form whatever is not permitted without written authority from the proprietor. Property of FCI. Copyright FCI.

PRODUCT NUMBER  
51770-044--  
NOTE 3



RECOMMENDED PCB LAYOUT

|             |                |          |      |                                       |                      |            |  |                                     |  |
|-------------|----------------|----------|------|---------------------------------------|----------------------|------------|--|-------------------------------------|--|
| mat'l code  |                | SEE NOTE |      | tolerances unless otherwise specified |                      | CUSTOMER   |  | FCI                                 |  |
| ltr         | ecn no.        | dr       | date | linear                                | 0.X ±0.5             | COPY       |  | www.fciconnect.com                  |  |
| A           |                |          |      |                                       | 0.XX ±0.25           | projection |  | title                               |  |
|             |                |          |      | angles                                | 0.XXX ±0.1           |            |  | 2P + 16S + 2P<br>R/A STB RECEPTACLE |  |
|             |                |          |      | dr                                    | 0° ±2°               |            |  | product family PwrBlade code        |  |
|             |                |          |      | enr                                   | X0 Wang 01/20/11     | scale      |  | size                                |  |
|             |                |          |      | chr                                   | Anson Liu 01/20/11   | 1:1        |  | dwg no 213                          |  |
|             |                |          |      | appd                                  | PM Zheng 01/20/11    |            |  | sheet                               |  |
|             |                |          |      |                                       | Joseph Hsia 01/20/11 |            |  | 3 of 4                              |  |
| sheet index | revision sheet |          |      |                                       |                      |            |  |                                     |  |

cage code 22526

Pro/E

Tous droits strictement reserves. Reproduction ou communication a des tiers interdite sous quelque forme que ce soit sans autorisation écrite du propriétaire. Propriete de c FCI. Droits de reproduction FCI.



All rights strictly reserved. Reproduction or issue to third parties in any form whatever is not permitted without written authority from the proprietor. Property of FCI. Copyright FCI.

PRODUCT NUMBER  
51770-044\_-  
NOTE 3

NOTES:

1. DIMENSIONS AND TOLERANCES ARE IN ACCORDANCE WITH ASME Y14.5M, 1994 UNLESS OTHERWISE SPECIFIED.

CONNECTOR NOTES:

- 2. HOUSING MATERIAL: UL 94 V-0 GLASS FILLED HIGH-TEMP THERMOPLASTIC  
POWER CONTACT MATERIAL: COPPER ALLOY  
SIGNAL PIN MATERIAL: COPPER ALLOY
  - 3. SEE ITEM 5 & 6 IN PRINT 10064183 FOR PLATING SPEC OF 51770-044 AND 51770-044LF RESPECTIVELY.
  - 4. MANUFACTURER'S NAME, DATE CODE AND OPTIONAL P/N TO APPEAR ON THIS SURFACE. THE P/N CAN BE OMITTED IF THERE IS NOT ENOUGH SPACE ON THIS SURFACE.
  - 5. PRODUCT SPECIFICATION GS-12-149.  
APPLICATION SPECIFICATION BUS-20-067.
  - 6. PACKAGED IN TRAYS.
- PCB NOTES:
- 7. ALL HOLE DIAMETERS ARE FINISHED HOLE SIZE.

- 8. MOUNTING HOLES, WHERE APPLICABLE, ARE UNPLATED.
- 9.  $\varnothing 1.151 \pm 0.025$  DRILLED HOLES PLATED WITH  
0.008 MIN SnPb OR Sn OVER 0.03  
TO 0.08 Cu PLATING TO ACHIEVE  
 $\varnothing 1.02 \pm 0.07$  HOLE.
- 10. "DIM XXX" TO BE DETERMINED BY THE CUSTOMER.
- 11. CONNECTOR KEEP-OUT ZONE.
- 12. THE VOID CORING IN BETWEEN POWER MODULES, SIGNAL MODULES AND END MODULES ARE OPTIONAL AND THE SHAPE MAY BE DIFFERENT FOR OPTIMIZE THE MOLDING PROCESS. THE VOID CORING WILL NOT EFFECT TO PRODUCT FUNCTION.

|             |                |            |      |                                       |                      |            |  |   |  |                    |  |
|-------------|----------------|------------|------|---------------------------------------|----------------------|------------|--|---|--|--------------------|--|
| mat'l code  |                | SEE NOTE 2 |      | tolerances unless otherwise specified |                      | CUSTOMER   |  | FCI   |  | www.fciconnect.com |  |
| ltr         | ecr no.        | dr         | date | linear                                | 0.X ± 0.5            | COPY       |  | <br>title 2P + 16S + 2P<br>R/A STB RECEPTACLE |  |                    |  |
| A           |                |            |      |                                       | 0.XX ± 0.25          | projection |  |   |  |                    |  |
|             |                |            |      | angles                                | 0.XXX ± 0.1          | <br>MIM    |  |   |  |                    |  |
|             |                |            |      | dr                                    | 0° ± 2°              | scale      |  | product family PwrBlade                       |  | code 213           |  |
|             |                |            |      | enr                                   | X0 Wang 01/20/11     | 1:1        |  | size A  |  | sheet 4 of 4       |  |
|             |                |            |      | chr                                   | Anson Liu 01/20/11   |            |  | dwg no 51770-044                              |  |                    |  |
|             |                |            |      | appd                                  | PM Zheng 01/20/11    |            |  |   |  |                    |  |
|             |                |            |      |                                       | Joseph Hsia 01/20/11 |            |  |   |  |                    |  |
| sheet index | revision sheet |            |      |                                       |                      |            |  |   |  |                    |  |

cage code 22526

Pro/E