

4

3

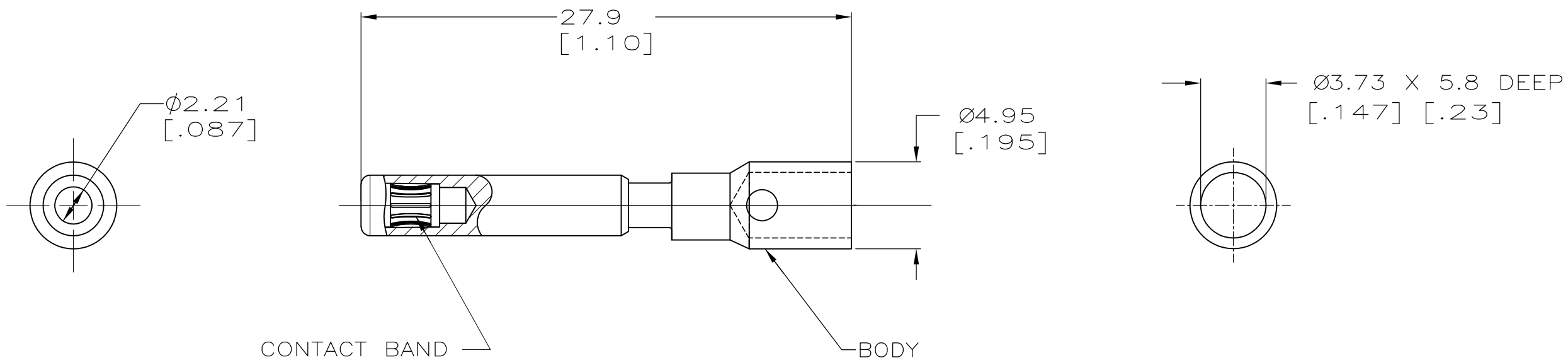
2

1

THIS DRAWING IS UNPUBLISHED. RELEASED FOR PUBLICATION - , - .  
 © COPYRIGHT - By - ALL RIGHTS RESERVED.

LOC	DIST	REVISIONS			
P	LTR	DESCRIPTION	DATE	DWN	APVD
CH	11	C2	REVISED PER ECO-11-010839	25MAY11	RK HMR

- 1 MATERIAL- BODY: COPPER ALLOY  
BAND: BeCu
- 2 FINISH- BODY AND BAND: 5.08μM[.000200] SILVER  
OVER 1.02μM[.000040] NICKEL.
- 3. WIRE BARREL WILL ACCEPT #10 AWG WIRE.
- 4. MATES WITH AMP PART NUMBER 193796-1.



193797-1  
PART NO

THIS DRAWING IS A CONTROLLED DOCUMENT.		DWN J.TURNER 06-03-93	TE Connectivity													
DIMENSIONS: mm[INCHES]		CHK ALG 11-17-93														
TOLERANCES UNLESS OTHERWISE SPECIFIED:		APVD SRS 11-17-93	NAME SOCKET ASSY, LOUVERTAC, NO 10 AWG, UNIVERSAL MATE-N-LOK* II													
<table border="0"> <tr><td>0 PLC</td><td>± -</td></tr> <tr><td>1 PLC</td><td>± 0.5[.02]</td></tr> <tr><td>2 PLC</td><td>± 0.25[.010]</td></tr> <tr><td>3 PLC</td><td>± -</td></tr> <tr><td>4 PLC</td><td>± -</td></tr> <tr><td>ANGLES</td><td>± -</td></tr> </table>		0 PLC	± -	1 PLC	± 0.5[.02]	2 PLC	± 0.25[.010]	3 PLC	± -	4 PLC	± -	ANGLES	± -	PRODUCT SPEC -	RESTRICTED TO -	
0 PLC	± -															
1 PLC	± 0.5[.02]															
2 PLC	± 0.25[.010]															
3 PLC	± -															
4 PLC	± -															
ANGLES	± -															
MATERIAL 1	FINISH 2	APPLICATION SPEC -	SIZE A3	CAGE CODE 00779												
		WEIGHT -	DRAWING NO C-193797	REV C2												
CUSTOMER DRAWING			SCALE NONE	SHEET 1 of 1												

\*MATE-N-LOK IS A TRADEMARK