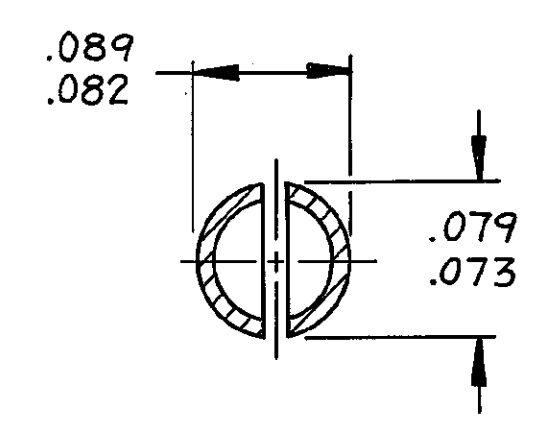
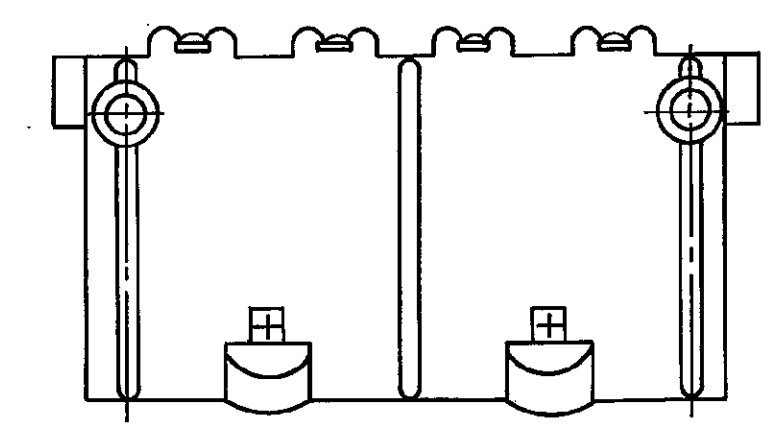
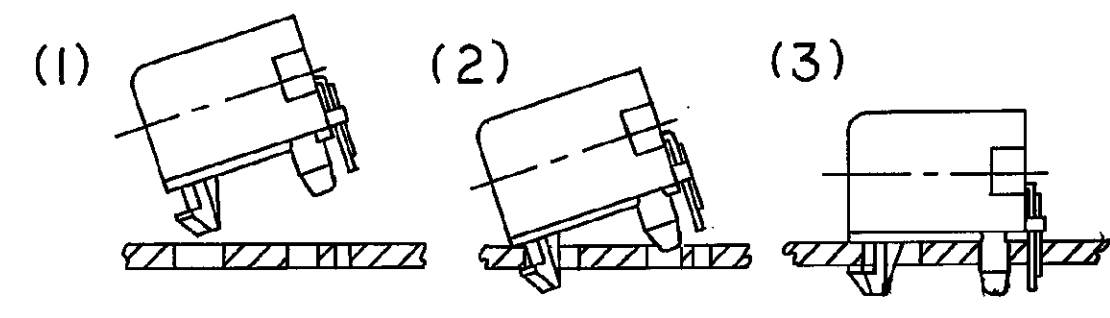


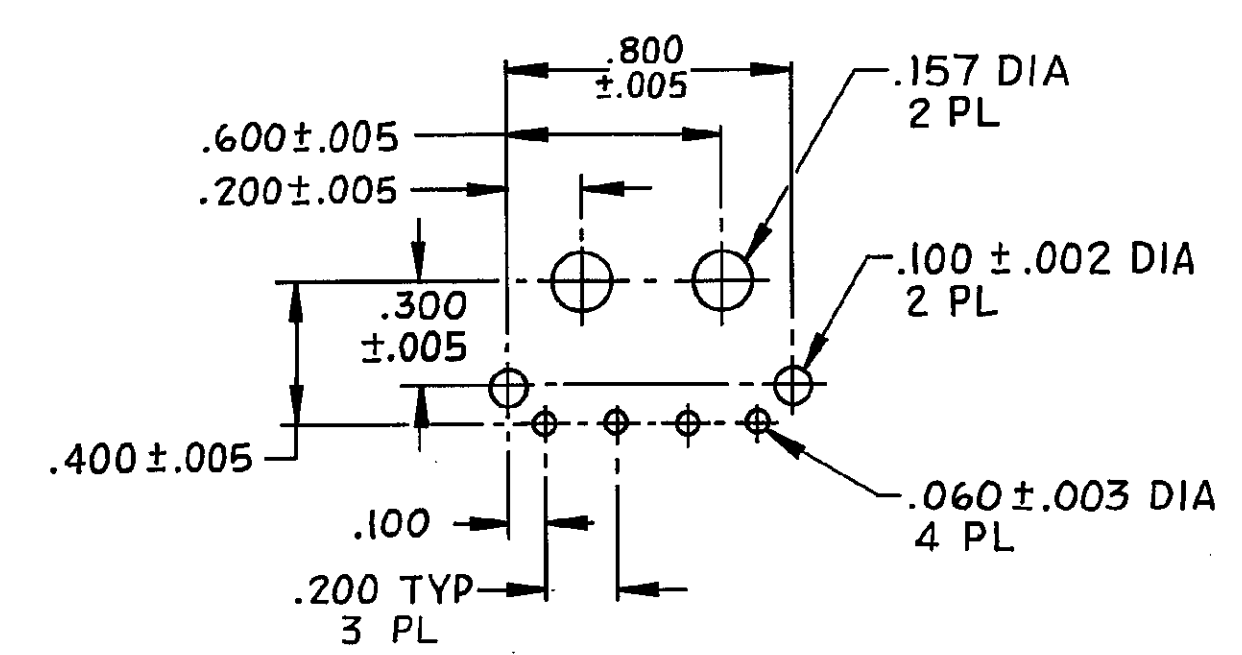
SECTION A-A



SECTION B-B
SCALE 10:1



MOUNTING PROCEDURE



RECOMMENDED LAYOUT
FOR .062 THK P.C. BOARD
SCALE 2-1

- PARTS COMPLY WITH AMP SOLDERABILITY SPEC 109-II-3.
 - RECOMMENDED EXPOSURE TO SOLDER WAVE (490°F) NOT TO EXCEED 5 SECONDS.
- ⚠ MATERIAL - HOUSING: NYLON UL94V-2 (NATURAL). CONTACT: PHOS BRONZE (PRE-TIN).
 - ⚠ MATERIAL - HOUSING: NYLON UL94V-0 (WHITE). CONTACT: PHOS BRONZE (PRE-TIN).

UNLESS OTHERWISE SPECIFIED DIMENSIONS ARE IN INCHES. TOLERANCES ON: DECIMALS ± .015 ANGLES ± .015		CONTRACT NO.		FINISH		MATERIAL		PART NO.	
MATERIAL		DR. <i>H. Sullivan</i> 6-27-84		STE		TE Connectivity		1-641737-1	
SEE TABLE		CHK. <i>M. Jones</i> 6-29-84		NAME		P.C. HEADER, RIGHT ANGLE MOUNT, COMMERCIAL MATE-N-LOK, 4 CKT		641737-1	
FINISH		APPD. <i>R. Glavin</i> 6-29-84		SIZE		D		00779	
SEE TABLE		DSGN APPD.		FSCM NO.		DRAWING NO.		641737	
		OTHER APPD.		SCALE 4-1		SHEET			