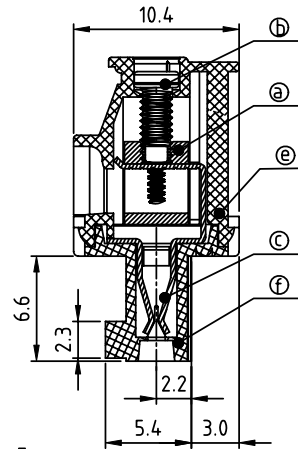
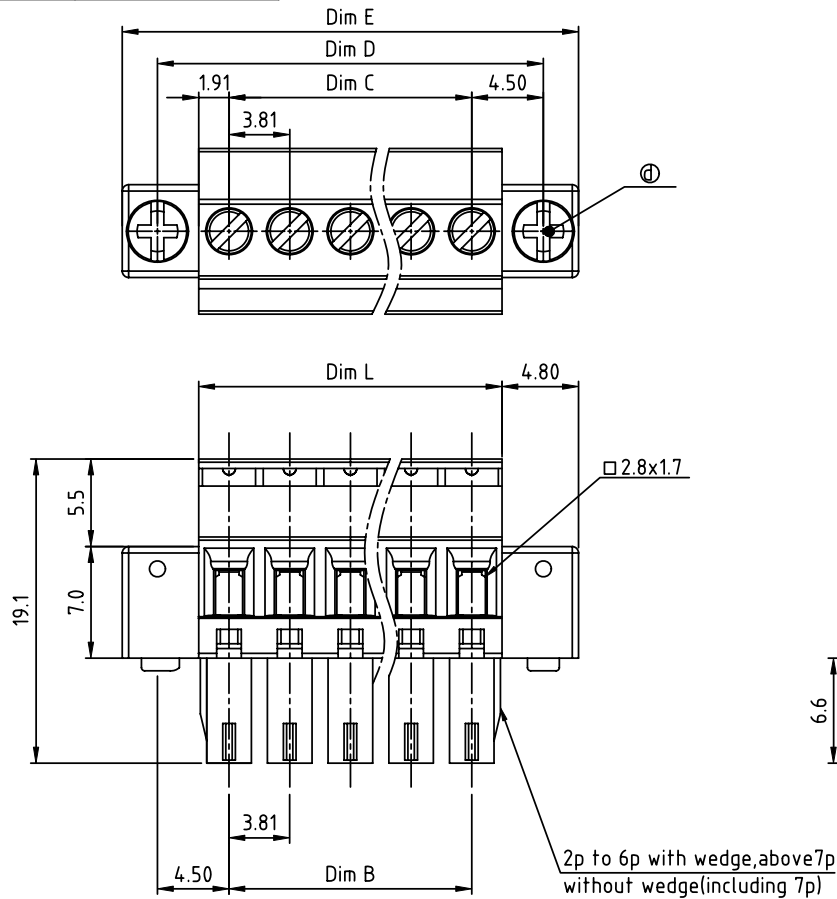


PRODUCT NUMBER	PITCH
TSxx31xC00J0G	3.81 mm



Material

- Item ① Clamp: Brass (CuZn) Ni plated
- Item ② Terminal screw: Steel Zinc plating "-" slot type
- Item ③ Female contact: PhBz Tin plated
- Item ④ With flange screw: Steel Zinc plating M2.5 "+/-" combination type
- Item ⑤ Top body: Thermoplastic (UL94V-0)
- Item ⑥ Bottom body: Thermoplastic (UL94V-0)

Electrical cULus/VDE

- Voltage rating: 300VAC/300VAC
- Current rating: 8A/10A
- Wire range: 1.5mm²
- Solid wire (AWG): 16-28
- Stranded wire (AWG): 16-28
- Torque: 1.7Lb-In./0.2Nm
- Screw: M2
- Wire strip length: 6-7mm
- Withstanding Voltage: 1.6KV/2.5KV
- Operating temperature: -40°C to +115°C
- Safety approval: cULus VDE

DIMENSION

N = Number of poles

Dim L	NX3.81
Dim B	(N-1)X3.81
Dim C	(N-1)X3.81
Dim D	(N-1)X3.81+9.0
Dim E	(N-1)X3.81+13.4

Poles	Tolerance
2p-6p	±0.15
7p-12p	±0.20
13p-16p	±0.25
17p-24p	±0.30

PART NO.: TS xx 31 x C 00J0 G

Solid block	0	Black (RAL9005)	RoHS compliant (lead<4%) In copper Alloy
No. of poles	2	Red (RAL3001/D)	
02 2 poles	3	Orange (RAL2011/P)	
03 3 poles	4	Yellow (RAL1018/A)	
...	5	Green (RAL6018/T)	
24 24 poles	6	Blue (RAL5015/A)	
	8	Grey (RAL7035/D)	
	9	White (RAL1102)	
	C	Green (RAL6018/U)	

mat'l. code		surface ASME Y14.5	tolerance ASME Y14.5	projection	product family TERMINAL BLOCK
ltr	ecn no	dr	date	tolerances unless otherwise specified	title TERMINAL BLOCK
				angles X±0.5	PLUGGABLE PLUG, HOOK ON ENTRY SIDE, WITH FLANGE
				X±1°	scale
		dr	EVIN ZHONG	041914	FCI
		enr	EVIN ZHONG	041914	dwg no
		chr	HANKE FENG	041914	sheet 1 of 1
		appd	SHI JUN	041914	size A4
sheet index	revision sheet	A	1		type CUSTOMER Drawing