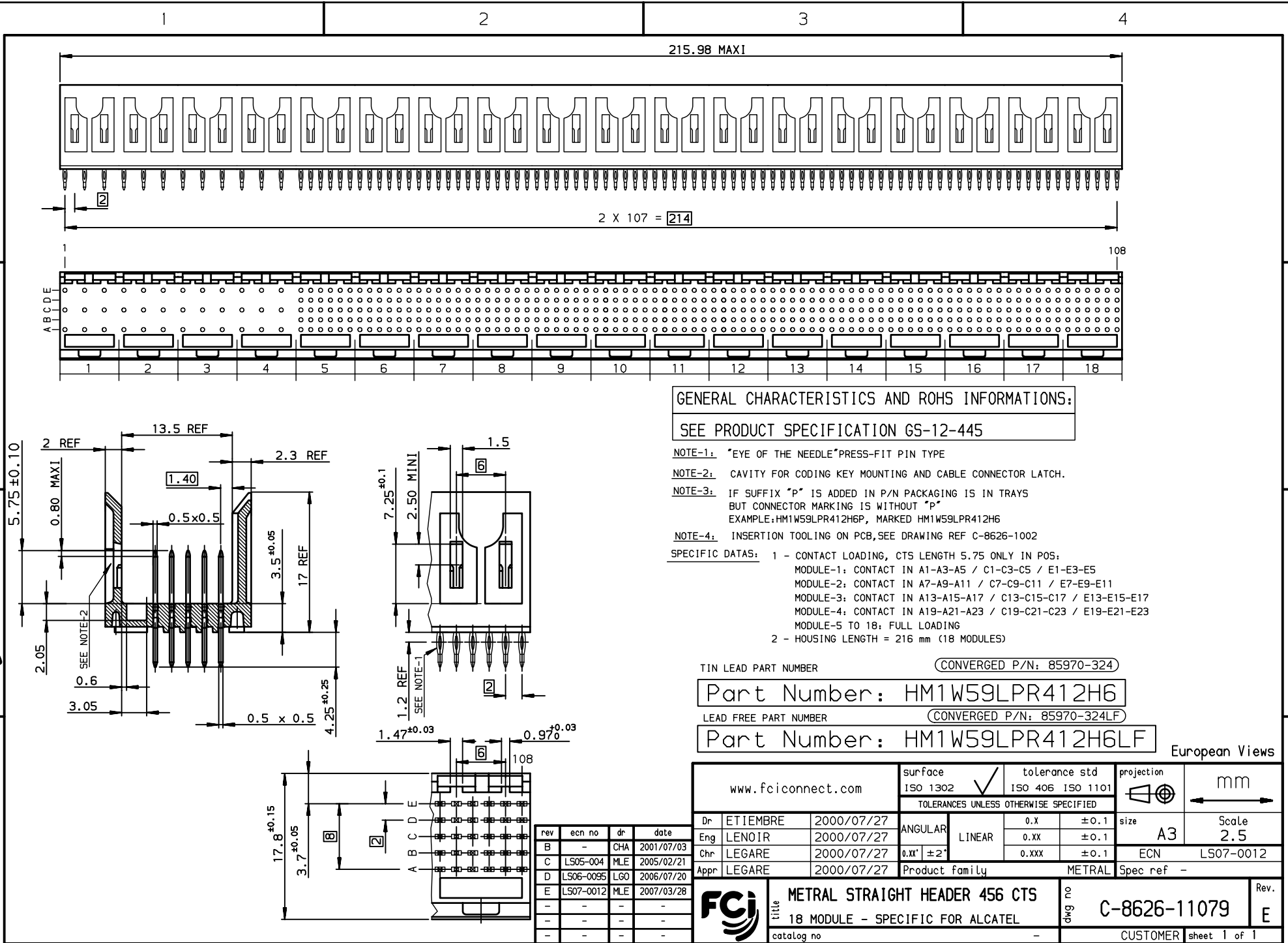


Copyright FCI, FCI



GENERAL CHARACTERISTICS AND ROHS INFORMATIONS:
SEE PRODUCT SPECIFICATION GS-12-445

- NOTE-1:** "EYE OF THE NEEDLE" PRESS-FIT PIN TYPE
NOTE-2: CAVITY FOR CODING KEY MOUNTING AND CABLE CONNECTOR LATCH.
NOTE-3: IF SUFFIX "P" IS ADDED IN P/N PACKAGING IS IN TRAYS BUT CONNECTOR MARKING IS WITHOUT "P"
 EXAMPLE: HM1W59LPR412H6P, MARKED HM1W59LPR412H6
NOTE-4: INSERTION TOOLING ON PCB, SEE DRAWING REF C-8626-1002
- SPECIFIC DATAS:**
- 1 - CONTACT LOADING, CTS LENGTH 5.75 ONLY IN POS:
 - MODULE-1: CONTACT IN A1-A3-A5 / C1-C3-C5 / E1-E3-E5
 - MODULE-2: CONTACT IN A7-A9-A11 / C7-C9-C11 / E7-E9-E11
 - MODULE-3: CONTACT IN A13-A15-A17 / C13-C15-C17 / E13-E15-E17
 - MODULE-4: CONTACT IN A19-A21-A23 / C19-C21-C23 / E19-E21-E23
 - MODULE-5 TO 18: FULL LOADING
 - 2 - HOUSING LENGTH = 216 mm (18 MODULES)

TIN LEAD PART NUMBER (CONVERGED P/N: 85970-324)
Part Number: HM1W59LPR412H6
 LEAD FREE PART NUMBER (CONVERGED P/N: 85970-324LF)
Part Number: HM1W59LPR412H6LF

European Views

www.fciconnect.com		surface ISO 1302 ✓	tolerance std ISO 406 ISO 1101	projection ⊕	mm
TOLERANCES UNLESS OTHERWISE SPECIFIED					
Dr	ETIEMBRE	2000/07/27	ANGULAR	size A3	Scale 2.5
Eng	LENOIR	2000/07/27	LINEAR	0.X ± 0.1	ECN LS07-0012
Chr	LEGARE	2000/07/27	0.XX ± 0.1	0.XXX ± 0.1	Spec ref -
Appr	LEGARE	2000/07/27	Product family	METRAL	
FCI		title METRAL STRAIGHT HEADER 456 CTS		Rev. E	
catalog no		18 MODULE - SPECIFIC FOR ALCATEL		dwg no C-8626-11079	
		CUSTOMER		sheet 1 of 1	

REV F - 2006-04-17