

ATLANTIC VERSION TERMINATOR INTERFACE ADAPTER	PART NUMBER	REVISION	DESCRIPTION	FEED TYPE	CONVERT TO	PART NUMBERS REQUIRED					
	2836073-1	A	FINE CRIMP HEIGHT ADJUST	MECHANICAL	PNEUMATIC FEED	2119950-1	1338685-1	5-18022-5	2119641-1	2119799-1	2063440-1
	2836073-2	A	FINE CRIMP HEIGHT ADJUST	PNEUMATIC	SERVO LATCH PLATE	2119951-1	-	8-2836073-5	1901094-3	-	2168400-6 (QUANTITY 2)
					SMART APPLICATOR	2161326-1	-	8-2836073-4	-	-	
					MECHANICAL FEED	2119949-1	1338685-1	5-18022-5	2119653-1	-	-
	2836073-5	A	FINE CRIMP HEIGHT ADJUST	SERVO LATCH PLATE ⁴	SERVO LATCH PLATE	2119951-1	-	8-2836073-5	1901094-3	-	2168400-6 (QUANTITY 2)
					SMART APPLICATOR	2161326-1	-	8-2836073-4	-	-	
					MECHANICAL FEED	2119949-1	1338685-1	5-18022-5	2119653-1	-	-
2836073-6	A	NON-CRIMP HEIGHT ADJUST	SERVO LATCH PLATE ⁴	-	-	-	-	-	-	-	
2836073-7	A	FINE CRIMP HEIGHT ADJUST	NONE	-	-	-	-	-	-	-	
7-2836073-7	A	CRIMP TOOLING KIT	-	-	-	-	-	-	-	-	

APPLICATOR DATA		
CRIMP	SIZE	TYPE
WIRE	2.03 mm [.080]	F
INSUL	2.79 mm [.110]	O

APPLICATOR INSTRUCTIONS 408-10389

TERMINAL DATA: AMPHENOL TERMINAL AMPHENOL CRIMP SPECIFICATION			
TERMINAL NAME: TERMINAL, PIN & SOCKET			
WIRE STRIP LENGTH	INSULATION DIAMETER RANGE		
3.50-4.00 mm [.138-.157 IN]	Ø1.80-2.80 mm [.071-.110 IN]		
TERMINAL APPLICATION SPECIFICATION	AMPHENOL Rev 11-2000		
TERMINALS APPLIED ¹³			
TE TERMINAL	AMPHENOL TERMINAL	TE TERMINAL	AMPHENOL TERMINAL
286560-2	TN01-016-0002-1	286896-2	TN02 016 0002 1
286560-3	TN01-016-0004-2	286896-3	TN02 016 0002 2
286560-4	TN01-016-0002-2	286896-4	TN02 016 0015 1
286560-5	TN01-016-0015-1		

WIRE SIZE	CRIMP HEIGHT mm [INCH]	CRIMP HEIGHT REFERENCE SETTING
1.50mm2	1.50 +/- 0.05 [.059 +/- .002]	7.1
1.00mm2	1.40 +/- 0.04 [.055 +/- .002]	8.3
0.75mm2	1.38 +/- 0.02 [.054 +/- .001]	8.4
0.50mm2	1.35 +/- 0.045 [.053 +/- .002]	8.7

- ¹ RECOMMENDED SPARE PARTS
- ² GREASE BEARING SURFACES LIGHTLY
- 3. LUBRICATE DAILY PER THE APPLICATOR INSTRUCTION SHEET SUPPLIED WITH THE APPLICATOR.
- ⁴ APPLICATOR SPECIFIC DATA TO BE ENTERED INTO BLANK MEMORY CHIP AT ASSEMBLY. SEE BELOW FOR PART NUMBER:
 MECHANICAL FEED WITH "SMART APPLICATOR" CONVERSION: 8-2836073-4
 PNEUMATIC FEED WITH "SMART APPLICATOR" CONVERSION: 8-2836073-4
 SERVO FEED WITH "FINE CRIMP HEIGHT ADJUST": 8-2836073-5
 SERVO FEED WITH "NON-CRIMP HEIGHT ADJUST": 8-2836073-6
- 5. ADJUSTMENT OF THE STRIPPER MAY BE REQUIRED WHEN MOVING THE APPLICATOR BETWEEN BENCH AND LEADMAKER APPLICATIONS.
- ⁶ APPLY PART NUMBER 1-23419-5 LOCTITE TO THREADS OF ITEM 62. APPLY PART NUMBER 2-23419-6 LOCTITE TO THREADS OF ITEM 242. FOR -6 ONLY APPLY PART NUMBER 1-23419-5 LOCTITE TO THREADS OF ITEM 37.
- ⁷ GREASE THREADS, GROOVE AND O-RING ON ITEMS 35 & 252.
- ⁸ MAGNET, ITEM 166 MUST BE ORIENTED CORRECTLY IN ORDER TO PROPERLY ACTUATE THE COUNTER.
- ⁹ CRIMP HEIGHT REFERENCE SETTING WAS THE SETTING USED WHEN THE APPLICATOR WAS QUALIFIED AT THE FACTORY. ADJUSTMENT MAY BE NECESSARY WHEN RUNNING APPLICATOR IN THE FIELD.
- ¹⁰ SPARE FEED CAM STORAGE LOCATION REFER TO INSTRUCTION SHEET FOR ADDITIONAL INFORMATION.
- ¹¹ TO CONVERT THE APPLICATOR TO A NON-CARRIER CUTTING STYLE, REMOVE ITEM 13 AND ATTACH TO THE LOCATION ON THE BACK SIDE OF THE HOUSING. REFER TO INSTRUCTION SHEET FOR ADDITIONAL INFORMATION.
- ¹² WHEN ASSEMBLING A NON CRIMP HEIGHT ADJUST APPLICATOR (-6) USE SHIMS FROM ITEM 260 TO ACHIEVE A NOMINAL SHIM HEIGHT OF 4.31.
- ¹³ TERMINAL LUBRICANT IS RECOMMENDED.

***WARNING**
 ON INSTALLATION, SET WIRE DISC, ITEM 40 TO LARGEST WIRE SIZE SETTING. USE OF SETTINGS BELOW MINIMUM REQUIRED CRIMP HEIGHT SETTING WILL CAUSE DAMAGE TO CRIMP TOOLING.

-77	-7	-6	-5	-2	-1	PART NO	DESCRIPTION	ITEM NO
-	-	1	-	-	-	2119957-2	APPLICATOR SHIM PACK	260
-	1	-	1	1	1	8-21084-0	O-RING, .676 ID, .070 DIA. MAT.	252

ATLANTIC VERSION
 Shown on sheets 1 of 4 & 2 of 4
 (Pacific version shown on sheets 3 of 4 & 4 of 4)

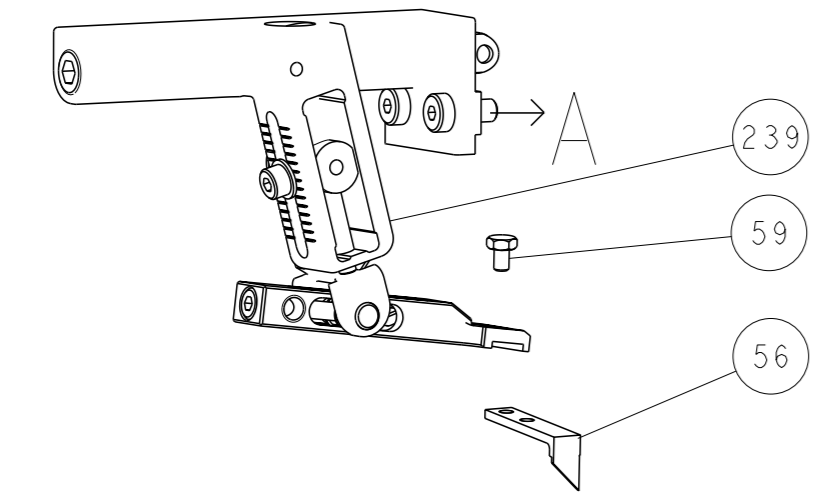
SET UP GAUGE	LOC	DIST	REVISIONS			
2119599-1	A	66	REV	DATE	OWN	APVD
			A	RELEASED	09DEC2015	LG TE

REV	DATE	OWN	APVD	DESCRIPTION	ITEM NO	
-	-	-	-	1 - 2119640-1	PUSH ROD, AIR FEED	250
-	-	-	-	1 - 2079988-1	BUSHING, LCH5-12, MISUMI	249
-	-	-	-	1 - 2119641-1	FEED CAM, AIR FEED	248
-	1	-	1	1 - 2119798-1	DETENT PIN	247
-	1	-	1	1 - 1-22279-3	SPRING, COMPRESSION	246
-	-	1	-	1 - 2119758-1	RAM, AMP STYLE, SIDE FEED, NON-ADJ.	245
-	1	1	1	1 - 2119082-8	CAM, SMAIL, INSULATION ADJUSTMENT	244
-	1	1	1	1 - 2079764-1	WASHER, WAVE SPRING, CREST-TO-CREST	243
-	1	1	1	1 - 2119083-1	RETAINER, INSULATION DIAL	242
-	1	1	1	1 - 7-18023-7	SCR, SKT HD CAP M3 X 4.0	241
-	-	2	2	-	2168400-6 SHCS, LOW HEAD, RoHS, M5 X 16	240
-	-	-	-	1 - 2119580-1	MECHANICAL FEED ASSEMBLY	239
-	-	-	-	1 - 2063440-1	AIR FEED MODULE	238
-	-	1	1	-	2119740-2 TAG, IDENTIFICATION	213
-	-	1	1	-	1901094-3 SPACER, FEEDER	198
-	-	-	-	2 - 21045-3	RING, RETAIN, EXTERN, 3/16 CRESCENT	172
-	1	1	1	1 - 994969-1	MAGNET, RARE EARTH HIGH ENERGY	166
-	REF	REF	REF	REF	994970-2 COUNTER, MAGNETIC	164
-	-	-	-	1 - 240638-1	SPRING, FEED FINGER	163
-	-	-	-	1 - 3-23627-7	PIN, RETAIN, GRVD, 3/16 X .854	137
-	-	-	-	1 - 2119799-1	HOLDER, FEED FINGER, AF	136
-	-	REF	REF	-	SEE NOTE 4 MEMORY CHIP, PROGRAMMED	135
-	-	1	1	-	1633743-1 SERVO FEED LATCH ASM	133
-	-	REF	REF	-	2119944-1 FEED FINGER ASSEMBLY, SF	117
-	1	1	1	1 - 2119955-1	ASSY, LUBRICATOR, SIDE FEED	113
-	1	1	1	1 - 455888-8	SPACER, CRIMPER	82
-	1	1	1	1 - 2119956-1	DOCUMENTATION PACKAGE	71
-	1	1	1	1 - 2119791-9	DEPRESSOR, WIRE	70
-	1	-	-	1 - 2119740-1	TAG, IDENTIFICATION	67
-	2	2	2	2 - 2168078-1	SCREW, DRIVE, RH, RoHS, 2 x .188	66
-	1	-	-	1 - 2119793-1	LIMITER, ADJUSTMENT BOLT	63
-	3	-	3	3 - 992763-5	SCR, SET, SOC, CONE POINT, M3 x 4.0	62
-	1	1	1	1 - 2079383-4	SCR, BHSC, RoHS (M4 X 8)	60
-	-	-	-	1 - 5-18022-5	SCR, HEX HD CAP, M4 X 6.0	59
-	-	-	-	1 - 1338685-1	PAWL, FEED	56
-	4	4	4	4 - 2168400-1	SHCS, LOW HEAD, RoHS, M4 X 12	54
-	2	2	2	2 - 2168083-8	SCR, SKT HD CAP, RoHS, M4 X 16	53
-	1	1	1	1 - 5018030-1	NUT, HEX, REG, RoHS, M3	52
-	1	1	1	1 - 811242-5	BUMPER, HOLD DOWN	51
-	1	1	1	1 - 690753-2	SPACER, TONKER	50
-	-	-	-	1 - 18023-9	SCR, SKT HD CAP M4 X 6.0	49
-	-	-	-	1 - 2119652-1	FEED CAM, PRE FEED	48
-	-	-	-	1 - 2119653-1	FEED CAM, POST FEED	47
-	1	1	1	1 - 2119656-9	APPLICATOR BASIC ASSEMBLY, SF	46
-	1	-	-	1 - 2119370-1	RAM, AMP STYLE, SIDE FEED	44
-	1	1	1	1 - 2079383-7	SCR, BHSC, RoHS (M8 X 25)	41
-	1	-	-	1 - 2119645-1	DISC, NUMBERED FA WIRE ADJUSTMENT	40
-	1	-	-	1 - 2119957-1	APPLICATOR SHIM PACK	39
-	1	1	1	1 - 2119644-2	RAM WASHER, PRECISION	38
-	1	1	1	1 - 2119085-1	FA HEAD, ATLANTIC STYLE	37
-	1	-	-	1 - 2119092-1	BOLT, ADJUSTMENT	35
-	1	1	1	1 - 1752356-1	SUPPORT, TERMINAL	34
-	2	2	2	2 - 2079383-5	SCR, BHSC, RoHS (M4 X 20)	33
-	1	1	1	1 - 2161328-1	HEX HEAD, FLANGED, M5 x 8mm LONG	32
-	1	1	1	1 - 1-1320908-0	SPACER, STRIP GUIDE	30
-	1	1	1	1 - 2119959-1	ASSEMBLY, STRIP GUIDE	29
-	1	1	1	1 - 1320928-6	STRIP GUIDE	24
-	1	1	1	1 - 2168083-2	SCR, SKT HD CAP, RoHS, M4 X 8.0	21
-	2	2	2	2 - 1-18028-2	WASHER, FLAT, REG M4	20
-	1	1	1	1 - 2119533-1	STRIPPER, SIDE FEED	19
-	1	1	1	1 - 2119806-1	INSERT, SHEAR	13
-	1	1	1	1 - 3-22280-3	SPRING, COMPRESSION	12
-	1	1	1	1 - 1-356885-4	STOP, SHEAR	11
-	1	1	1	1 - 2119805-1	SHEAR HOLDER, FRONT	10
-	1	1	1	1 - 1803095-1	FLOATING SHEAR, FRONT	9
-	1	1	1	1 - 1-1333204-6	ANVIL, COMBINATION	8
-	1	1	1	1 - 5-240641-0	SPACER	7
-	-	-	-	-	-	6
-	1	1	1	1 - 2119757-6	DEPRESSOR, SHEAR	5
-	1	1	1	1 - 238011-2	BLOCK, CRIMPER SPACER	4
-	1	1	1	1 - 5-2119784-7	CRIMPER, INSULATION O PREMIUM	3
-	1	1	1	1 - 455888-1	SPACER, CRIMPER	2
-	1	1	1	1 - 2-456405-8	CRIMPER, WIRE PREMIUM	1

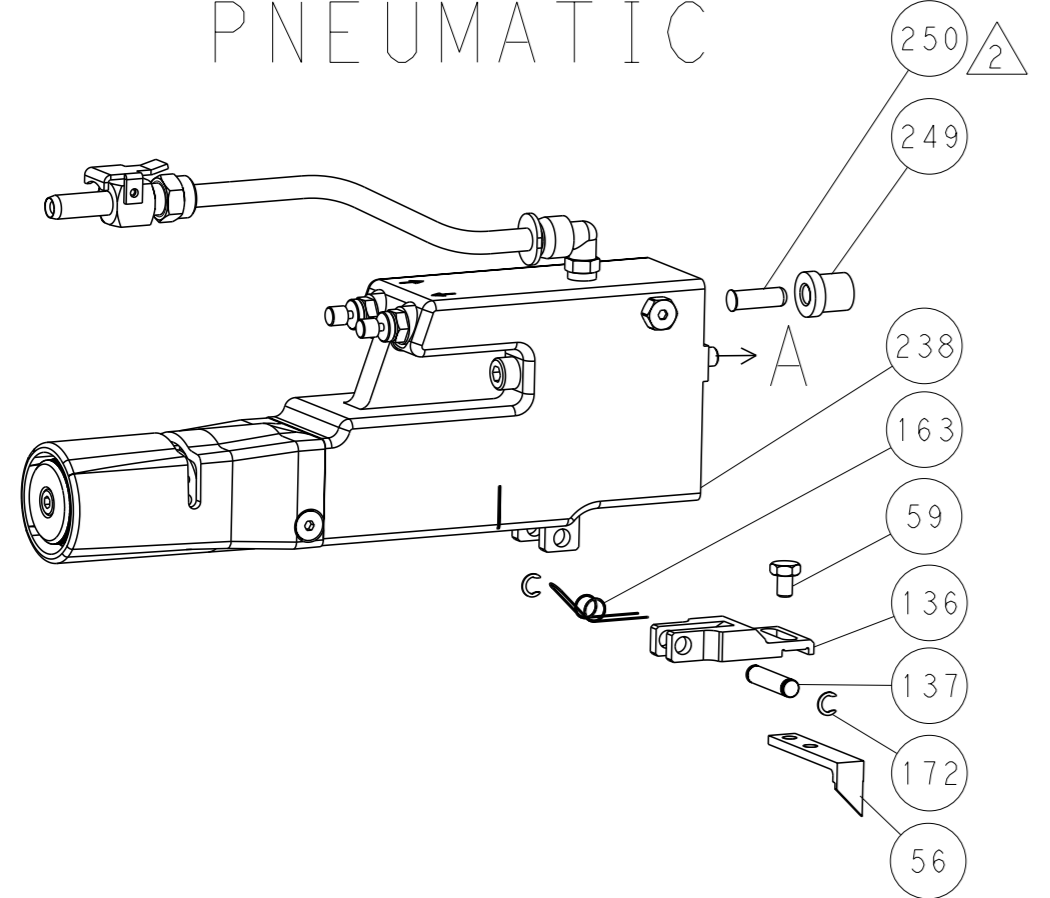
DIMENSIONS:		TOLERANCES UNLESS OTHERWISE SPECIFIED:		OWN	CHK	APVD	DATE	NAME	
mm	0 PLC ±	1 PLC ±	2 PLC ±	H. HUANG	L. ZHANG	U. GUO	23OCT2015	Ocean Side Feed Applicator	
	3 PLC ±	4 PLC ±	ANGLES ±	TE Connectivity		Harrisburg, PA 17105-3608		Customer Accessible Production Drawing	
MATERIAL	FINISH	WEIGHT	SCALE	SIZE		CAGE CODE		DRAWING NO	
			1:2	A1		00779		©=2836073	

LOC	DIST	REVISIONS			
A	66	REV	DATE	OWN	APVD
		-	SEE SHEET 1	-	-

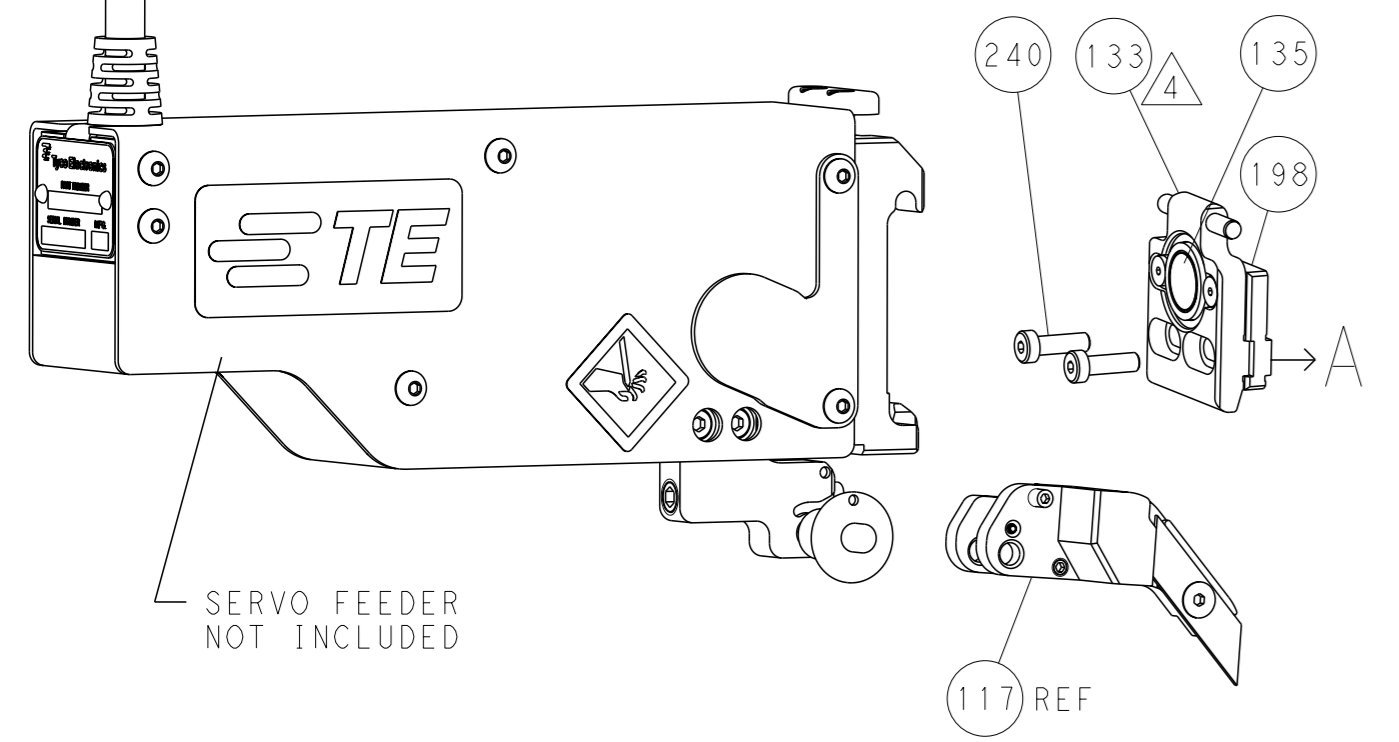
FEED TYPE MECHANICAL



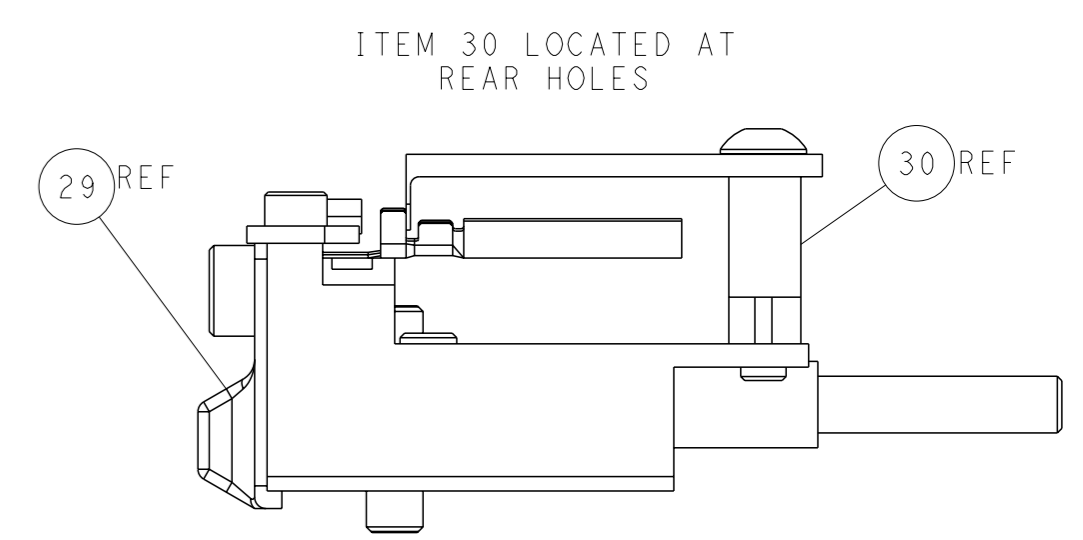
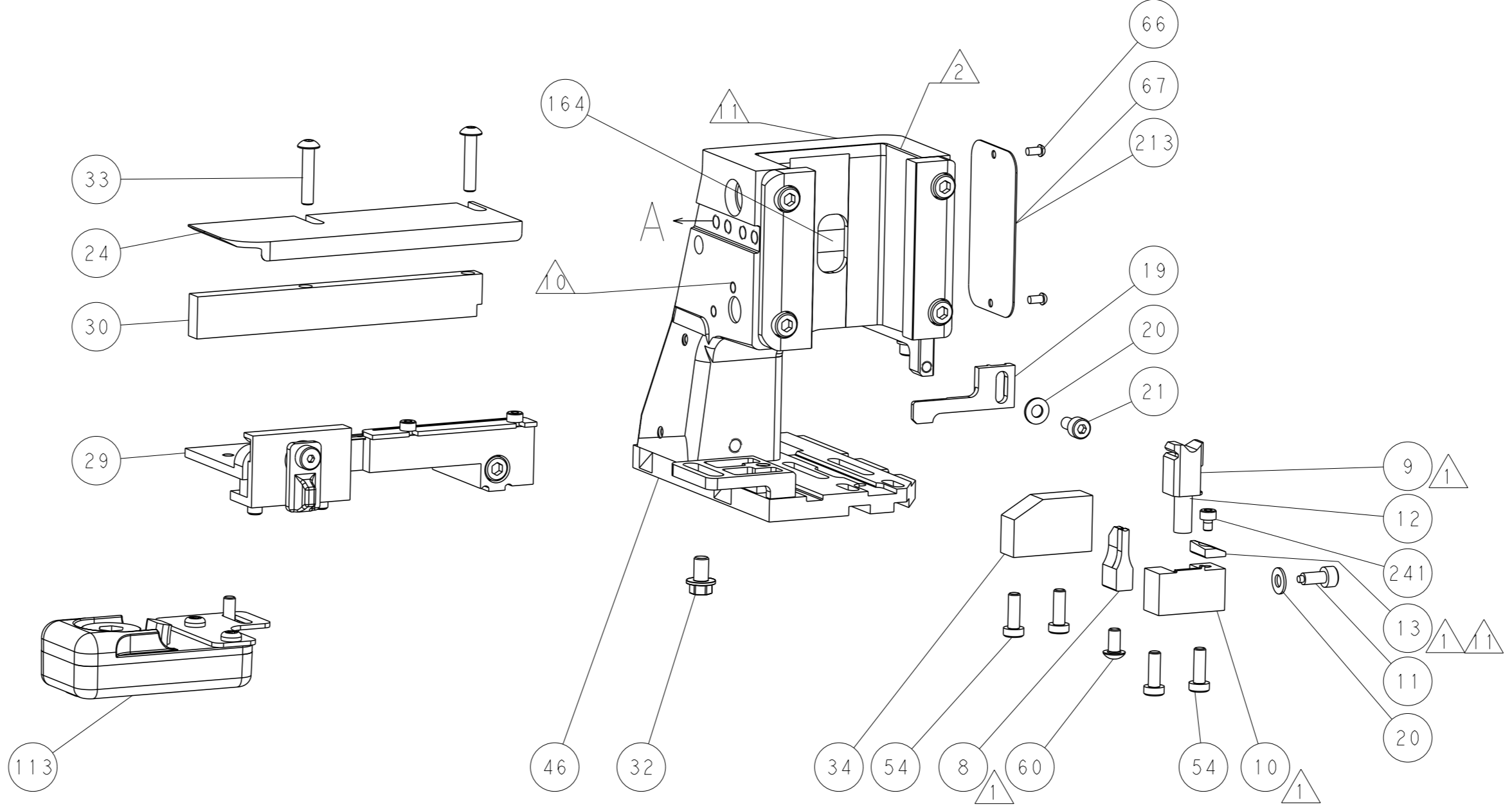
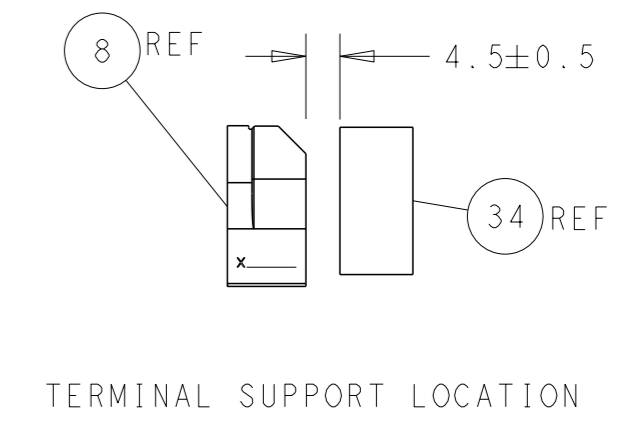
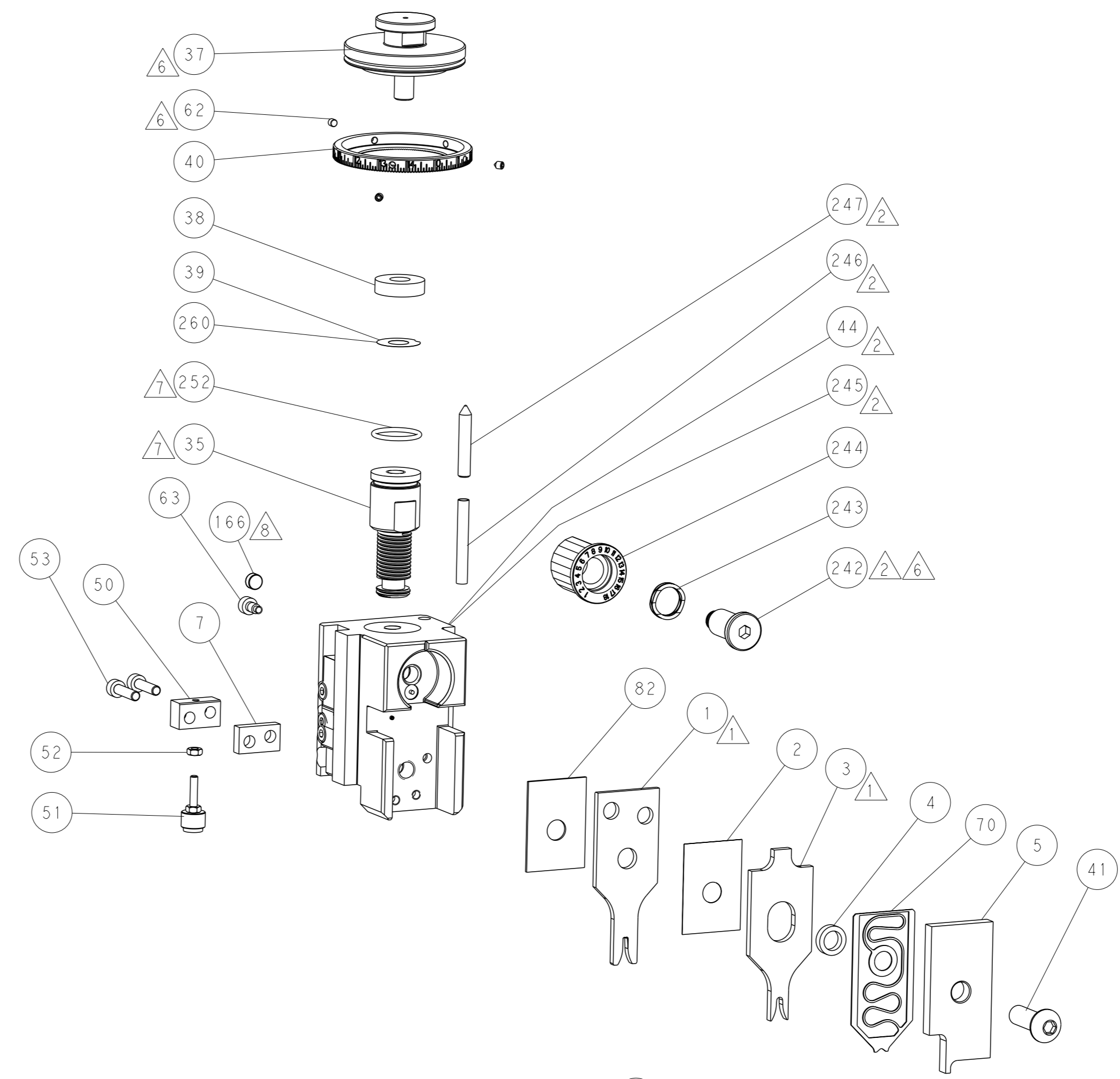
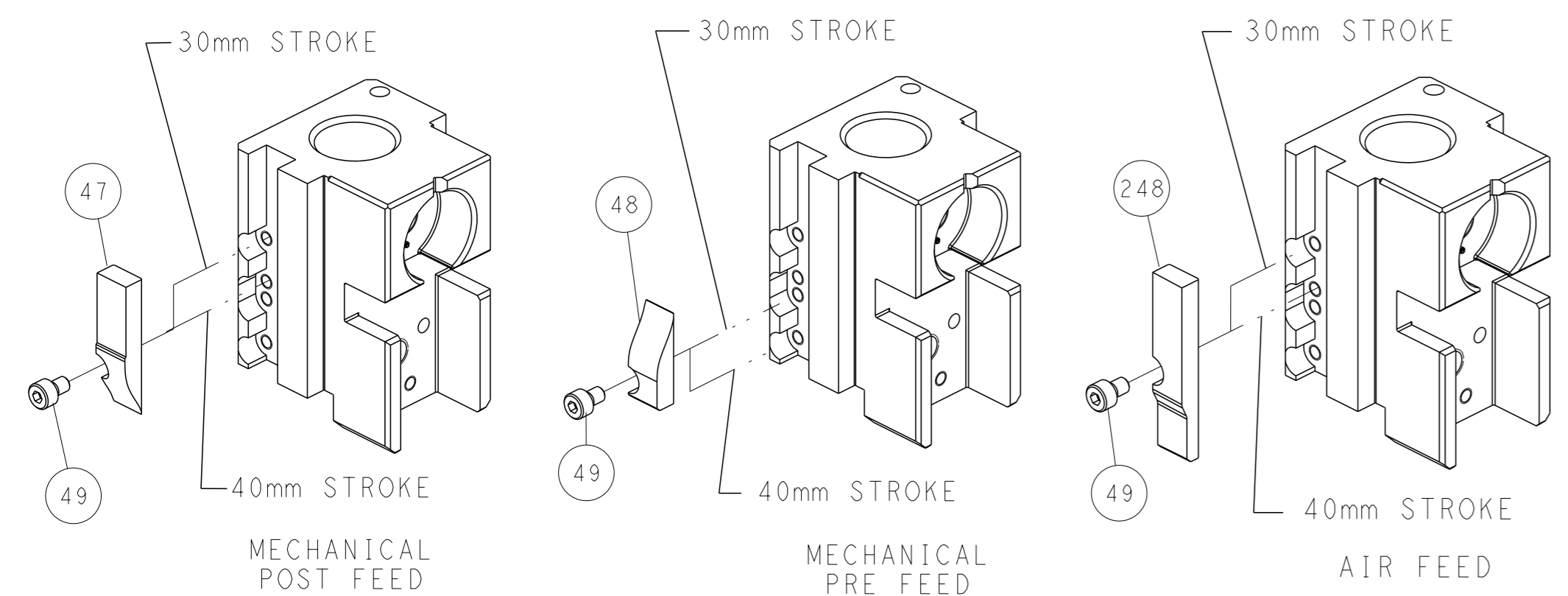
PNEUMATIC



SERVO LATCH PLATE



CAM POSITIONS



ATLANTIC VERSION
 Shown on sheets 1 of 4 & 2 of 4
 (Pacific version shown on sheets 3 of 4 & 4 of 4)

<small>THIS DRAWING IS A CONTROLLED DOCUMENT FOR TYCO ELECTRONICS CORPORATION. IT IS SUBJECT TO CHANGE AND THE USER'S RESPONSIBILITY TO VERIFY THE LATEST REVISION SHOULD BE CONTACTED FOR THE LATEST REVISION.</small>		OWN: R. HUANG CHK: L. ZHANG APVD: J. GUO	23OCT2015 23OCT2015 23OCT2015	NAME: Ocean Side Feed Applicator	SIZE: A1 CAGE CODE: 00779 DRAWING NO: C=2836073	RESTRICTED TO: -
DIMENSIONS: mm TOLERANCES UNLESS OTHERWISE SPECIFIED: 0 PLC ± 1 PLC ± 2 PLC ± 3 PLC ± 4 PLC ± ANGLES ±	MATERIAL: - FINISH: -	WEIGHT: -	SCALE: 1:2	SHEET: 2 of 4	REV: A	Customer Accessible Production Drawing

PACIFIC VERSION TERMINATOR INTERFACE ADAPTER	PART NUMBER	REVISION	DESCRIPTION	FEED TYPE	APPLICATOR STYLE CONVERSION CHART						
					CONVERT TO	PART NUMBERS REQUIRED					
	2-2836073-1	A	FINE CRIMP HEIGHT ADJUST	MECHANICAL	PNEUMATIC FEED	2119950-1	1338685-1	5-18022-5	2119641-2	2119799-1	2063440-1
					SERVO LATCH PLATE	2119951-1	-	8-2836073-5	1901094-3	-	2168400-6 (QUANTITY 2)
					SMART APPLICATOR	2161326-1	-	8-2836073-4	-	-	-
	2-2836073-2	A	FINE CRIMP HEIGHT ADJUST	PNEUMATIC	MECHANICAL FEED	2119949-1	1338685-1	5-18022-5	2119653-2	-	-
					SERVO LATCH PLATE	2119951-1	-	8-2836073-5	1901094-3	-	2168400-6 (QUANTITY 2)
					SMART APPLICATOR	2161326-1	-	8-2836073-4	-	-	-
	2-2836073-5	A	FINE CRIMP HEIGHT ADJUST	SERVO LATCH PLATE	MECHANICAL FEED	2119949-1	1338685-1	5-18022-5	2119653-2	-	-
					PNEUMATIC FEED	2119950-1	1338685-1	5-18022-5	2119641-2	2119799-1	2063440-1
	2-2836073-7	A	FINE CRIMP HEIGHT ADJUST	NONE	-	-	-	-	-	-	-
	7-2836073-7	A	CRIMP TOOLING KIT	-	-	-	-	-	-	-	-

APPLICATOR DATA		
CRIMP	SIZE	TYPE
WIRE	2.03 mm (.080)	F
INSUL	2.79 mm (.110)	O
APPLICATOR INSTRUCTIONS 408-10389		

TERMINAL DATA: AMPHENOL TERMINAL AMPHENOL CRIMP SPECIFICATION			
TERMINAL NAME: TERMINAL, PIN & SOCKET			
WIRE STRIP LENGTH		INSULATION DIAMETER RANGE	
3.50-4.00 mm (.138-.157 IN)		Ø1.80-2.80 mm (.071-.110 IN)	
TERMINAL APPLICATION SPECIFICATION AMPHENOL Rev 11-2000			
TERMINALS APPLIED			
TE TERMINAL	AMPHENOL TERMINAL	TE TERMINAL	AMPHENOL TERMINAL
286560-2	TN01-016-0002-1	286896-2	TN02 016 0002 1
286560-3	TN01-016-0004-2	286896-3	TN02 016 0002 2
286560-4	TN01-016-0002-2	286896-4	TN02 016 0015 1
286560-5	TN01-016-0015-1		

WIRE SIZE	CRIMP HEIGHT mm [INCH]	CRIMP HEIGHT REFERENCE SETTING
1.50mm2	1.50 +/- 0.055 [.059 +/- .002]	7.1
1.00mm2	1.40 +/- 0.04 [.055 +/- .002]	8.3
0.75mm2	1.38 +/- 0.02 [.054 +/- .001]	8.4
0.50mm2	1.35 +/- 0.045 [.053 +/- .002]	8.7

- RECOMMENDED SPARE PARTS
- GREASE BEARING SURFACES LIGHTLY
- LUBRICATE DAILY PER THE APPLICATOR INSTRUCTION SHEET SUPPLIED WITH THE APPLICATOR.
- APPLICATOR SPECIFIC DATA TO BE ENTERED INTO BLANK MEMORY CHIP AT ASSEMBLY. SEE BELOW FOR PART NUMBER:
 - MECHANICAL FEED WITH "SMART APPLICATOR" CONVERSION: 8-2836073-4
 - PNEUMATIC FEED WITH "SMART APPLICATOR" CONVERSION: 8-2836073-4
 - SERVO FEED WITH "FINE CRIMP HEIGHT ADJUST": 8-2836073-5
- ADJUSTMENT OF THE STRIPPER MAY BE REQUIRED WHEN MOVING THE APPLICATOR BETWEEN BENCH AND LEADMAKER APPLICATIONS.
- APPLY PART NUMBER 1-23419-5 LOCTITE TO THREADS OF ITEM 62. APPLY PART NUMBER 2-23419-6 LOCTITE TO THREADS OF ITEM 242.
- GREASE THREADS, GROOVE AND O-RING ON ITEMS 139 & 152.
- MAGNET MUST BE ORIENTED CORRECTLY IN ORDER TO PROPERLY ACTUATE THE COUNTER.
- CRIMP HEIGHT REFERENCE SETTING WAS THE SETTING USED WHEN THE APPLICATOR WAS QUALIFIED AT THE FACTORY. ADJUSTMENT MAY BE NECESSARY WHEN RUNNING APPLICATOR IN THE FIELD.
- SPARE FEED CAM STORAGE LOCATION REFER TO INSTRUCTION SHEET FOR ADDITIONAL INFORMATION.
- TO CONVERT THE APPLICATOR TO A NON-CARRIER CUTTING STYLE, REMOVE ITEM 13 AND ATTACH TO THE LOCATION ON BACK SIDE OF THE HOUSING. REFER TO INSTRUCTION SHEET FOR ADDITIONAL INFORMATION.
- TERMINAL LUBRICANT RECOMMENDED.

***WARNING**
ON INSTALLATION, SET WIRE DISC, ITEM 40 TO LARGEST WIRE SIZE SETTING. USE OF SETTINGS BELOW MINIMUM REQUIRED CRIMP HEIGHT SETTING WILL CAUSE DAMAGE TO CRIMP TOOLING.

PACIFIC VERSION
Shown on sheets 3 of 4 & 4 of 4
(Atlantic version shown on sheets 1 of 4 & 2 of 4)

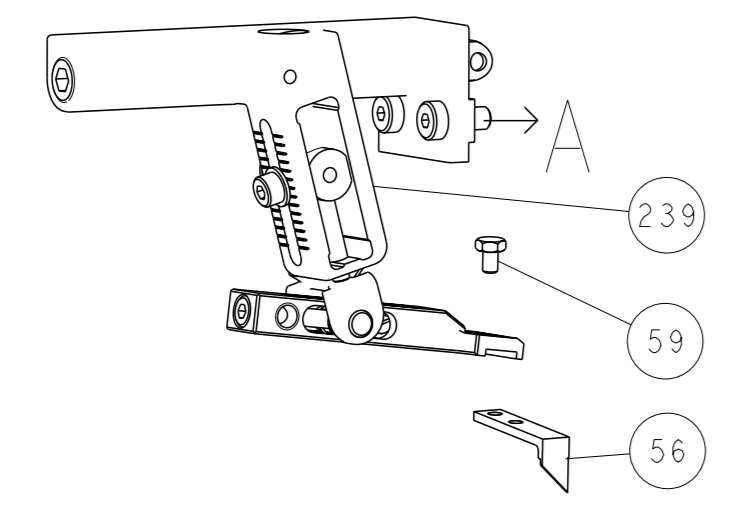
SET UP GAUGE	LOC	DIST	REVISIONS			
2119599-1	A	66	#	DATE	OWN	APVD
			-	SEE SHEET 1	-	-

-	1	1	1	1	2119782-1	FINE ADJUST HEAD ASM, PACIFIC STYLE	251
-	-	-	1	-	2119640-1	PUSH ROD, AIR FEED	250
-	-	-	1	-	2079988-1	BUSHING, LCH5-12, MISUMI	249
-	1	1	1	1	1-22279-3	SPRING, COMPRESSION	246
-	1	1	1	1	2119082-8	CAM, SMALL, INSULATION ADJUSTMENT	244
-	1	1	1	1	2079764-1	WASHER, WAVE SPRING, CREST-TO-CREST	243
-	1	1	1	1	2119083-1	RETAINER, INSULATION DIAL	242
-	1	1	1	1	7-18023-7	SCR, SKT HD CAP M3 X 4.0	241
-	-	2	-	-	2168400-6	SHCS, LOW HEAD, RoHS, M5 X 16	240
-	-	-	-	1	2119580-1	MECHANICAL FEED ASSEMBLY	239
-	-	-	1	-	2063440-1	AIR FEED MODULE	238
-	-	1	-	-	2119740-2	TAG, IDENTIFICATION	213
-	-	1	-	-	1901094-3	SPACER, FEEDER	198
-	-	-	2	-	21045-3	RING, RETAIN, EXTERN, 3/16 CRESCENT	172
-	1	1	1	1	994969-1	MAGNET, RARE EARTH HIGH ENERGY	166
-	REF	REF	REF	REF	994970-2	COUNTER, MAGNETIC	164
-	-	-	1	-	240638-1	SPRING, FEED FINGER	163
-	1	1	1	1	8-21084-1	O-RING, .801 ID, .070 DIA, MAT.	152
-	-	-	1	-	2119641-2	FEED CAM, AIR FEED	151
-	1	1	1	1	2119798-2	DETENT PIN	145
-	1	1	1	1	2079383-8	SCR, BHSC, RoHS (M4 X 16)	144
-	4	4	4	4	2168400-5	SHCS, LOW HEAD, RoHS, M4 X 20	143
-	-	-	-	1	2119653-2	FEED CAM, POST FEED	142
-	1	1	1	1	1-2119656-0	APPLICATOR BASIC ASSEMBLY, SF	141
-	1	1	1	1	2119650-1	RAM, ASIAN STYLE, SIDE FEED	140
-	1	1	1	1	2119092-2	BOLT, ADJUSTMENT	139
-	-	-	1	-	3-23627-7	PIN, RETAIN, GRVD, 3/16 X .854	137
-	-	-	1	-	2119799-1	HOLDER, FEED FINGER, AF	136
-	-	REF	-	-	SEE NOTE 4	MEMORY CHIP, PROGRAMMED	135
-	-	1	-	-	1633743-1	SERVO FEED LATCH ASM	133
-	-	REF	-	-	2119944-1	FEED FINGER ASSEMBLY, SF	117
-	1	1	1	1	2119955-1	ASSY, LUBRICATOR, SIDE FEED	113
-	1	1	1	1	455888-8	SPACER, CRIMPER	82
-	1	1	1	1	2119956-1	DOCUMENTATION PACKAGE	71
-	1	1	1	1	2119791-9	DEPRESSOR, WIRE	70
-	1	-	1	1	2119740-1	TAG, IDENTIFICATION	67
-	2	2	2	2	2168078-1	SCREW, DRIVE, RH, RoHS, 2 x .188	66
-	1	1	1	1	2119793-1	LIMITER, ADJUSTMENT BOLT	63
-	3	3	3	3	992763-5	SCR, SET, SOC, CONE POINT, M3 X 4.0	62
-	-	-	1	1	5-18022-5	SCR, HEX HD CAP, M4 X 6.0	59
-	-	-	1	1	1338685-1	PAWL, FEED	56
-	2	2	2	2	2168083-8	SCR, SKT HD CAP, RoHS, M4 X 16	53
-	1	1	1	1	5018030-1	NUT, HEX, REG, RoHS, M3	52
-	1	1	1	1	811242-5	BUMPER, HOLD DOWN	51
-	1	1	1	1	690753-2	SPACER, TONKER	50
-	-	-	1	2	18023-9	SCR, SKT HD CAP M4 X 6.0	49
-	-	-	-	1	2119652-1	FEED CAM, PRE FEED	48
-	1	1	1	1	2079383-7	SCR, BHSC, RoHS (M8 X 25)	41
-	1	1	1	1	2119645-1	DISC, NUMBERED FA WIRE ADJUSTMENT	40
-	1	1	1	1	2119957-1	APPLICATOR SHIM PACK	39
-	1	1	1	1	1-2119644-2	RAM WASHER, PRECISION	38
-	1	1	1	1	1752356-1	SUPPORT, TERMINAL	34
-	2	2	2	2	2079383-5	SCR, BHSC, RoHS (M4 X 20)	33
-	1	1	1	1	2161328-1	HEX HEAD, FLANGED, M5 X 8mm LONG	32
-	1	1	1	1	1-1320908-0	SPACER, STRIP GUIDE	30
-	1	1	1	1	2119959-1	ASSEMBLY, STRIP GUIDE	29
-	1	1	1	1	1320928-6	STRIP GUIDE	24
-	1	1	1	1	2168083-2	SCR, SKT HD CAP, RoHS, M4 X 8.0	21
-	2	2	2	2	1-18028-2	WASHER, FLAT, REG M4	20
-	1	1	1	1	2119533-1	STRIPPER, SIDE FEED	19
-	1	1	1	1	2119806-1	INSERT, SHEAR	13
-	1	1	1	1	3-22280-3	SPRING, COMPRESSION	12
-	1	1	1	1	1-356885-4	STOP, SHEAR	11
-	1	1	1	1	2119805-1	SHEAR HOLDER, FRONT	10
-	1	1	1	1	1803095-1	FLOATING SHEAR, FRONT	9
-	1	1	1	1	1-1333204-6	ANVIL, COMBINATION	8
-	1	1	1	1	5-240641-0	SPACER	7
-	-	-	-	-	-	-	6
-	1	1	1	1	2119757-6	DEPRESSOR, SHEAR	5
-	1	1	1	1	238011-2	BLOCK, CRIMPER SPACER	4
-	1	1	1	1	5-2119784-7	CRIMPER, INSULATION O PREMIUM	3
-	1	1	1	1	455888-1	SPACER, CRIMPER	2
-	1	1	1	1	2-456405-8	CRIMPER, WIRE PREMIUM	1

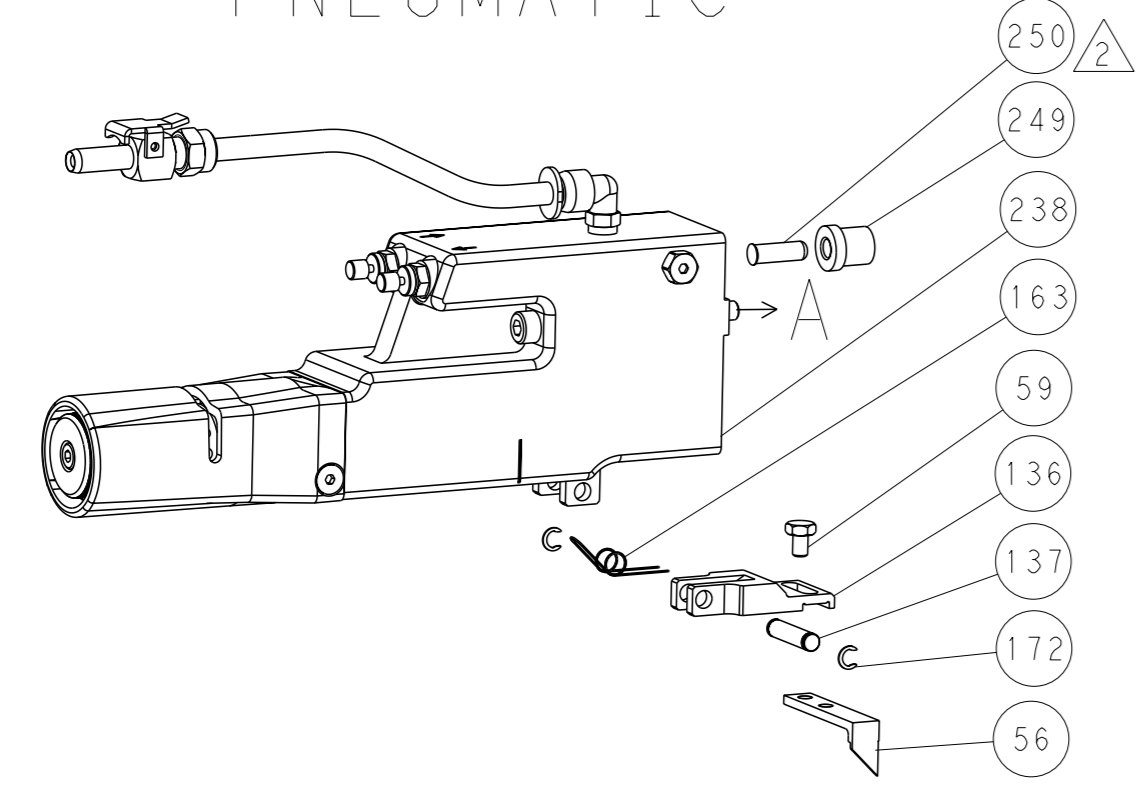
DIMENSIONS:	TOLERANCES UNLESS OTHERWISE SPECIFIED:	OWN	CHK	APVD	U. GUO	230CT2015	NAME	SIZE	CAGE CODE	DRAWING NO	RESTRICTED TO
mm	0 PLC ± 1 PLC ± 2 PLC ± 3 PLC ± 4 PLC ± ANGLES ±	H. HUANG	L. ZHANG	U. GUO	U. GUO	230CT2015	TE Connectivity Harrisburg, PA 17105-3608	A1	00779	©=2836073	-
Customer Accessible Production Drawing SCALE 1:2 SHEET 3 of 4 REV A											

REVISONS		DATE	OWN	APVD
LOC	DIST			
A	66			
P	LYR			
		SEE SHEET 1		

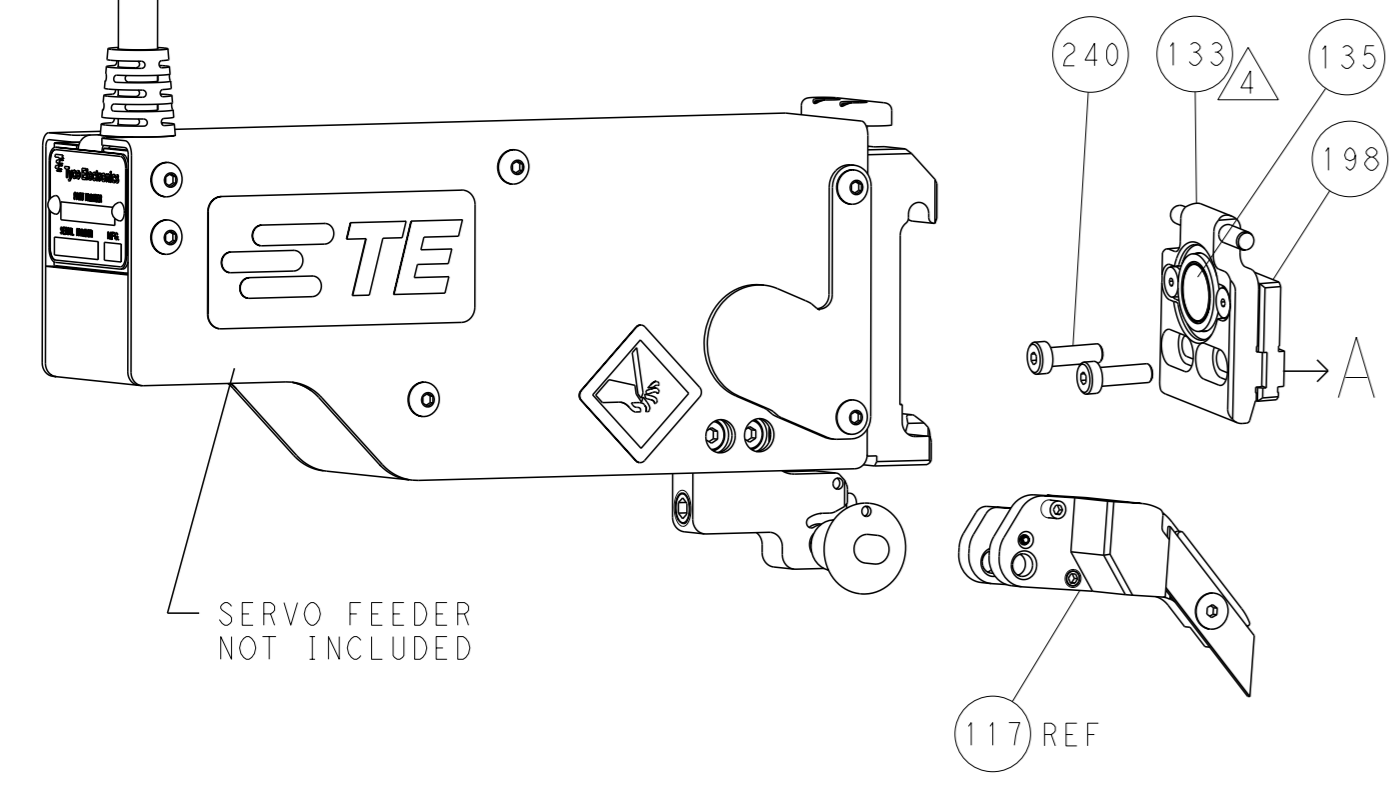
FEED TYPE MECHANICAL



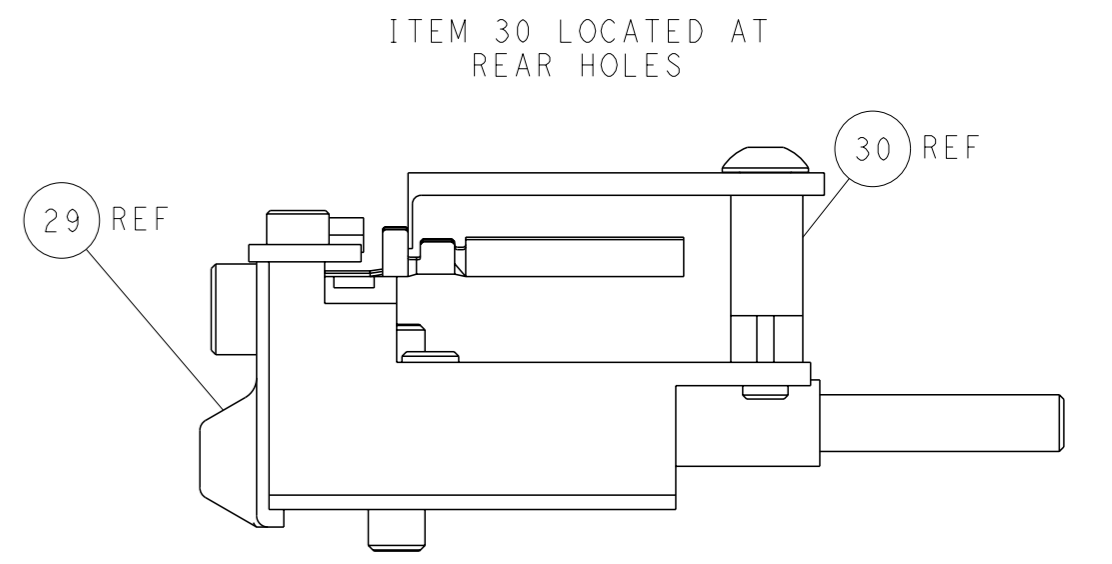
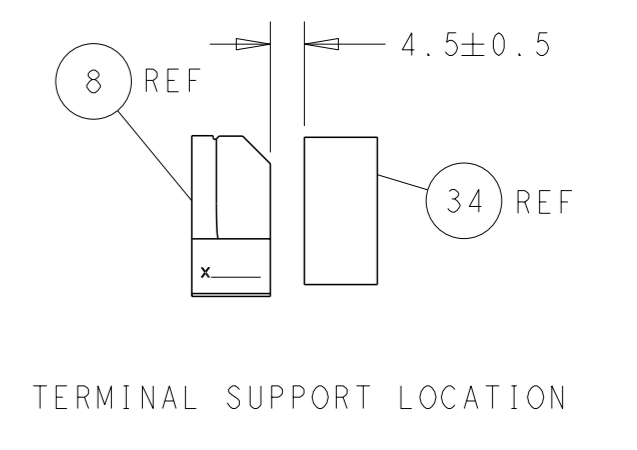
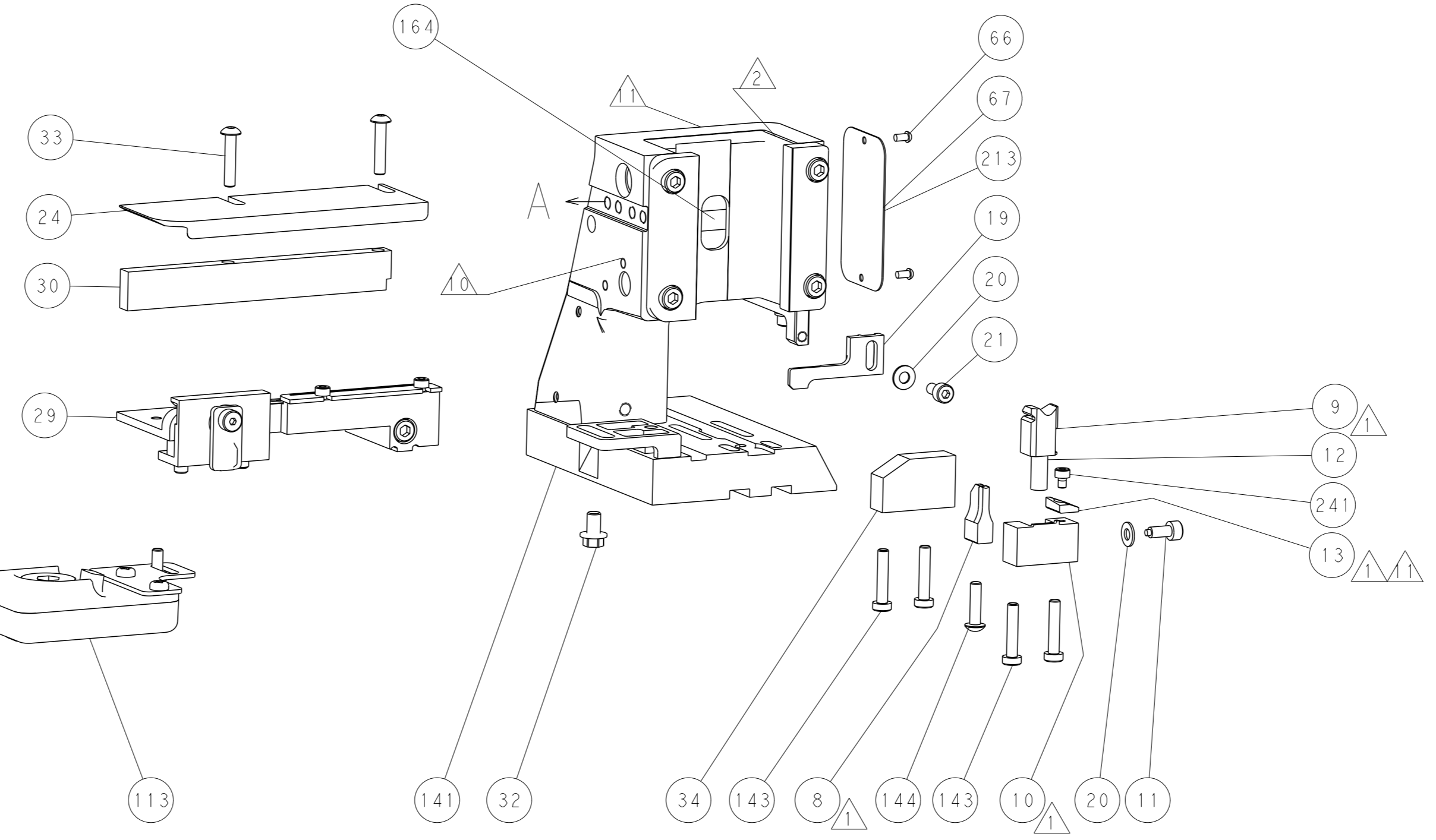
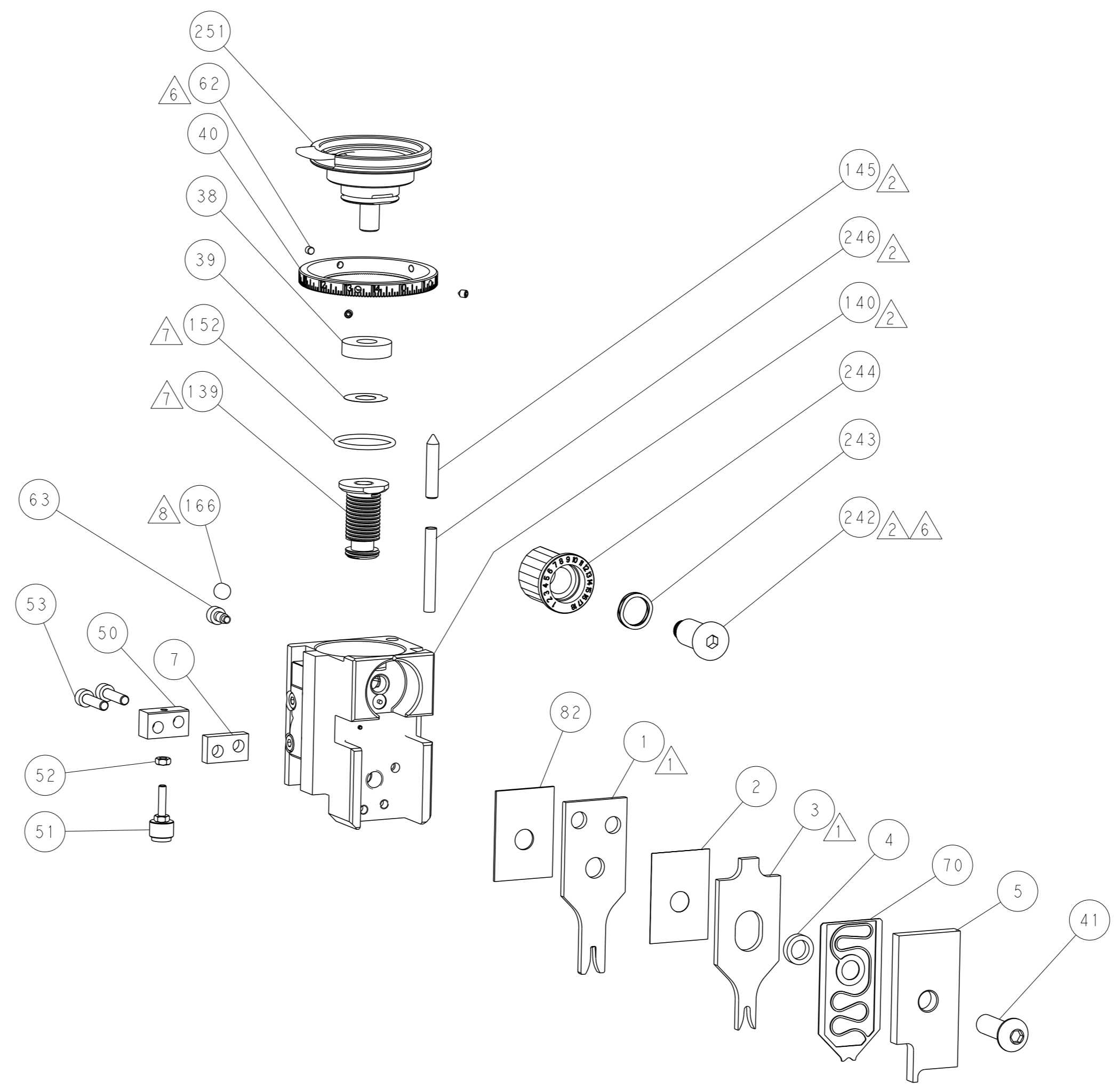
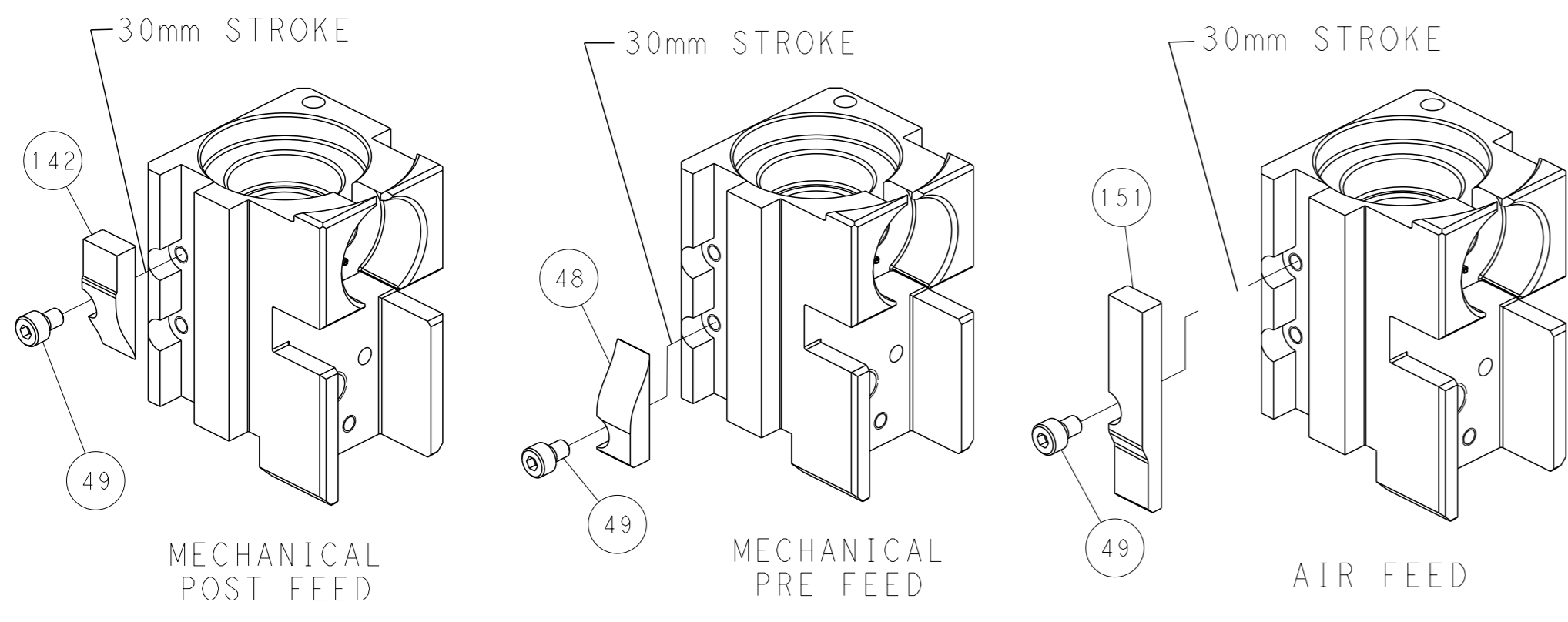
PNEUMATIC



SERVO LATCH PLATE



CAM POSITIONS



PACIFIC VERSION
 Shown on sheets 3 of 4 & 4 of 4
 (Atlantic version shown on sheets 1 of 4 & 2 of 4)

<small>THIS DRAWING IS A CONTROLLED DOCUMENT FOR TYCO ELECTRONICS CORPORATION. IT IS SUBJECT TO CHANGE AND THE CONTROL AND ENGINEERING ORGANIZATION SHOULD BE CONTACTED FOR THE LATEST REVISION.</small>		DWN: H. HUANG CHK: L. ZHANG APVD: J. GUO	23OCT2015 23OCT2015 23OCT2015	NAME: Ocean Side Feed Applicator SIZE: A1 CAGE CODE: 00779 DRAWING NO: C=2836073	RESTRICTED TO: - SCALE: 1:2 SHEET: 4 of 4 REV: A
DIMENSIONS: mm TOLERANCES UNLESS OTHERWISE SPECIFIED: 0 PLC ± 1 PLC ± 2 PLC ± 3 PLC ± 4 PLC ± ANGLES FINISH ±		MATERIAL: - WEIGHT: - Customer Accessible Production Drawing			