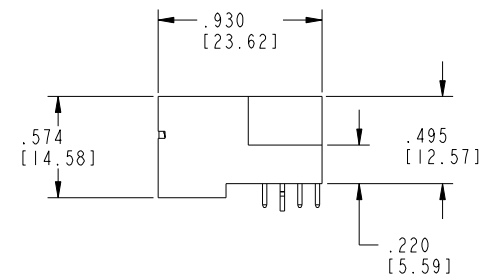
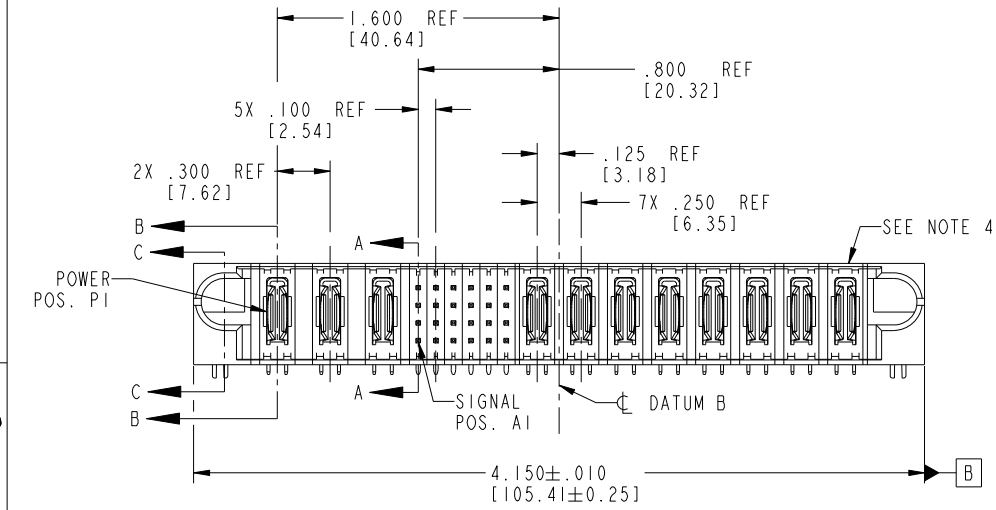
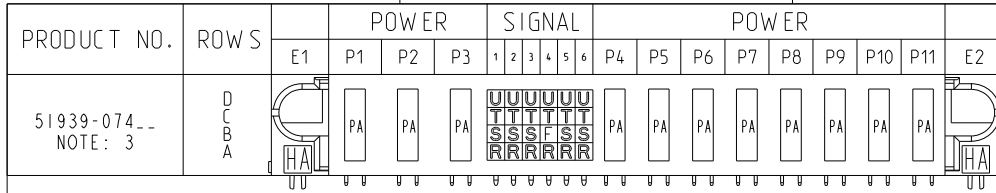


Tous droits strictement réservés. Reproduction ou communication à des tiers interdite sous quelque forme que ce soit sans autorisation écrite du propriétaire. Propriété de c FCI. Droits de reproduction FCI.



All rights strictly reserved. Reproduction or issue to third parties in any form whatever is not permitted without written authority from the proprietor. Property of FCI. Copyright FCI.



CODE	DIM "M" MATING LENGTH	CONTACT TYPE
U	.270 [6.86]	SIGNAL
T	.270 [6.86]	SIGNAL
S	.270 [6.86]	SIGNAL
R	.270 [6.86]	SIGNAL
PA	N/A [N/A]	POWER
HA	N/A [N/A]	HOLD-DOWN
F	.220 [5.59]	SIGNAL

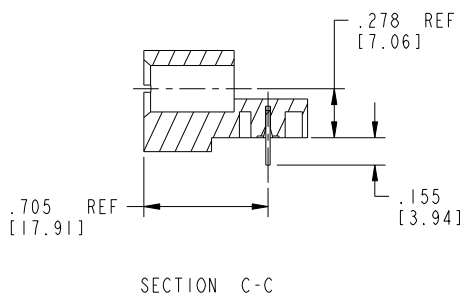
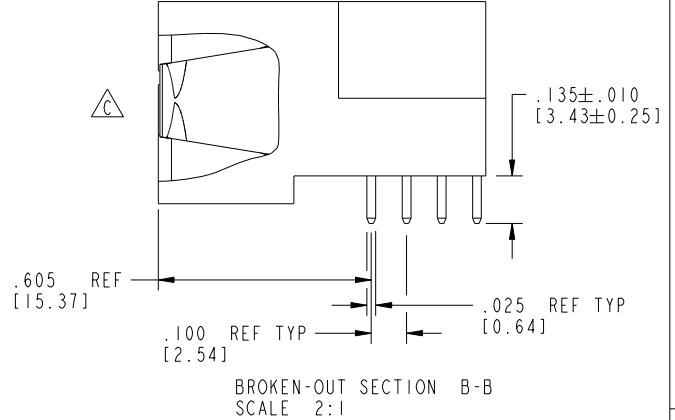
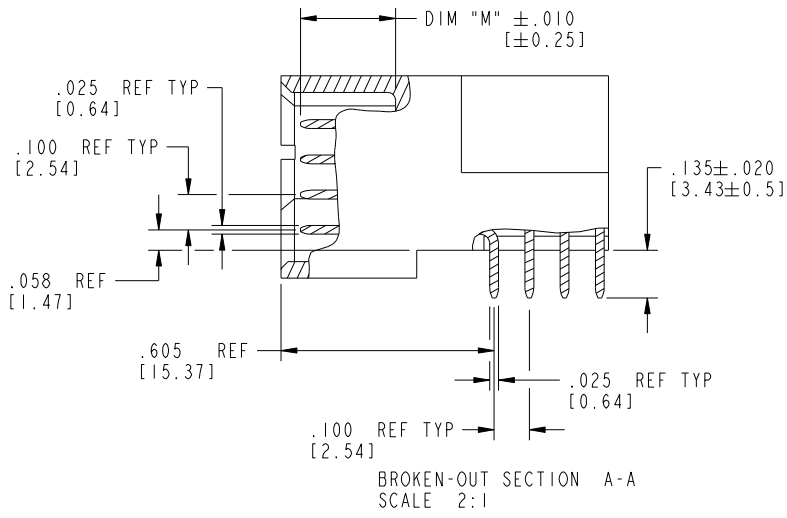
mat'l code				SEE NOTE 2		tolerances unless otherwise specified	
ltr	ecn no.	dr	date	linear	.XX±.01/0.X±0.3	angles	0°±2°
A	V03-0841	MEM	7/30/03		.XXX±.005/0.XX±0.13		
B	DG06-0014	JMG	01/12/06		.XXX±.0020/0.XXX±0.051		
C	DG08-0273	WD	01/02/09				
				dr	M. MOSTOLLER 7/30/03		
				enrg	M. MOSTOLLER 7/30/03		
				chr	H. BREWBAKER 7/30/03		
				appd	M. MOSTOLLER 7/30/03		
sheet index	revision sheet	C	C	C	C		
		1	2	3	4		

CUSTOMER		FCI	
COPY		www.fciconnect.com	
projection	title	3ACP + 24S + 8P	
INCH/MM	RIGHT ANGLE SOLDER HEADER		
scale	product family	PwrBlade	code
1:1	size	dwg no	213
	A	51939-074	sheet 1 of 4

Tous droits strictement réservés. Reproduction ou communication à des tiers interdite sous quelque forme que ce soit sans autorisation écrite du propriétaire. Propriété de c.FCI. Droits de reproduction FCI.

All rights strictly reserved. Reproduction or issue to third parties in any form whatever is not permitted without written authority from the proprietor. Property of FCI. Copyright FCI.

PRODUCT NUMBER
51939-074__
NOTE: 3



mat'l code		SEE NOTE 2		tolerances unless otherwise specified		CUSTOMER		FCI		www.fciconnect.com	
ltr	ecn no.	dr	date	linear	.XX±.01/0.X±0.3	COPY		projection		title	
C					.XXX±.005/0.XX±0.13	INCH/MM		RIGHT ANGLE SOLDER HEADER		3ACP + 24S + 8P	
				angles	.XXX±.0020/0.XXX±0.051	1:1		product family		PwrBlade	
				dr	0°±2°	A		size		code	
				enr	M. MOSTOLLER 7/30/03	A		dwg no		213	
				chr	M. MOSTOLLER 7/30/03	A		51939-074		sheet	
				appd	H. BREWBAKER 7/30/03	A		2 of 4			
sheet index		revision sheet									

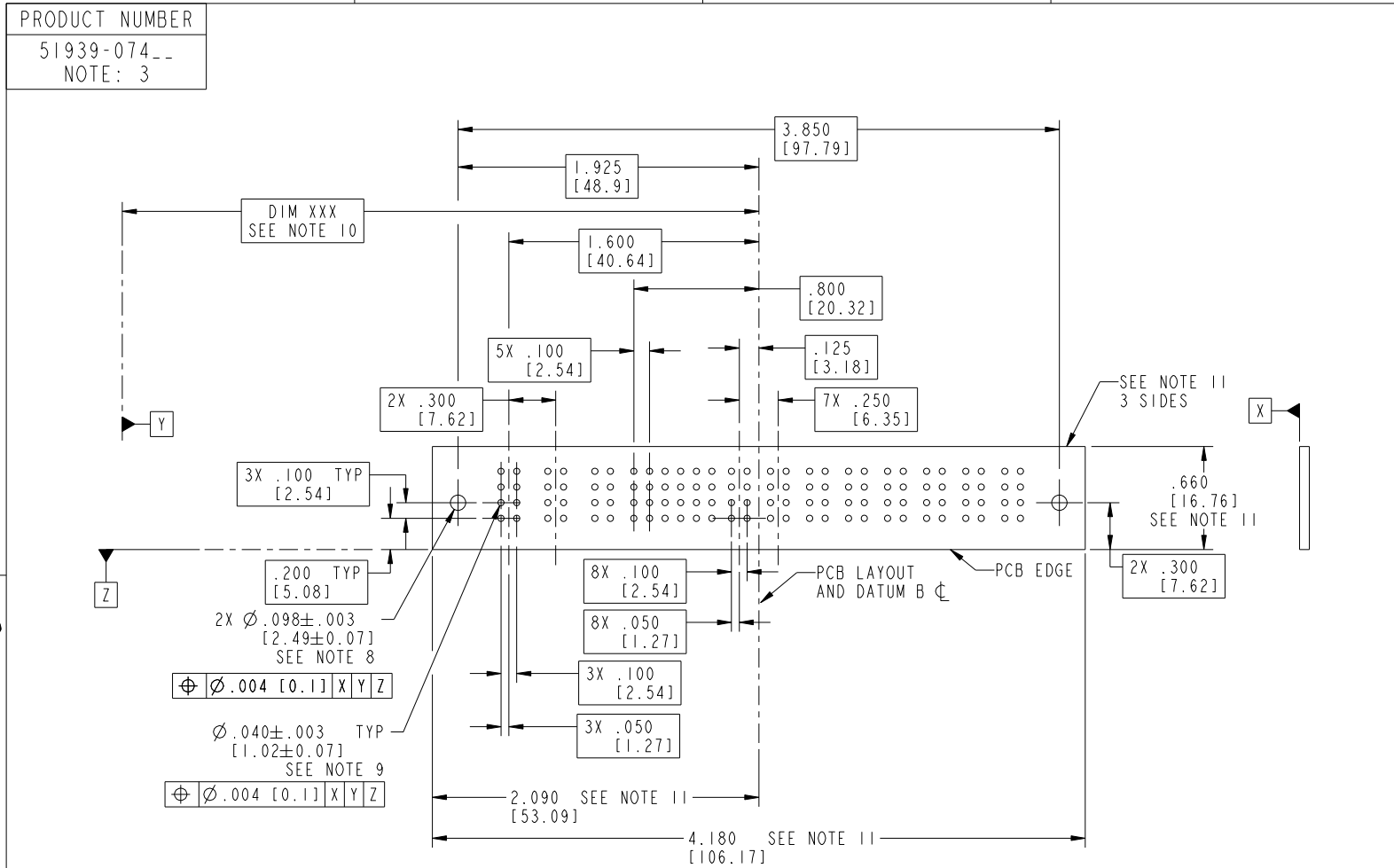
Pro/E

cage code 22526

Tous droits strictement réservés. Reproduction ou communication à des tiers interdite sous quelque forme que ce soit sans autorisation écrite du propriétaire. Propriété de c.FCI. Droits de reproduction FCI.



All rights strictly reserved. Reproduction or issue to third parties in any form whatsoever is not permitted without written authority from the proprietor. Property of FCI. Copyright FCI.



RECOMMENDED PCB LAYOUT

mat'l code		SEE NOTE 2		tolerances unless otherwise specified		CUSTOMER		 www.fciconnect.com	
ltr	ecn no.	dr	date	linear	.XX±.01/0.X±0.3	COPY		title	
C					.XXX±.005/0.XX±0.13	projection		3ACP + 24S + 8P	
				angles	.XXX±.0020/0.XXX±0.051			RIGHT ANGLE SOLDER HEADER	
				dr	0°±2°	INCH/MM		product family	
				enrg	M. MOSTOLLER 7/30/03	scale		PwrBlade	
				chr	M. MOSTOLLER 7/30/03	1:1		code	
				appd	H. BREWBAKER 7/30/03			size	
					M. MOSTOLLER 7/30/03			dwg no	
sheet index	revision sheet							A	
								51939-074	
								213	
								sheet	
								3 of 4	

cage code 22526

Pro/E

Tous droits strictement réservés. Reproduction ou communication à des tiers interdite sous quelque forme que ce soit sans autorisation écrite du propriétaire. Propriété de c FCI. Droits de reproduction FCI.



All rights strictly reserved. Reproduction or issue to third parties in any form whatsoever is not permitted without written authority from the proprietor. Property of FCI. Copyright FCI.

PRODUCT NUMBER
51939-074__
NOTE: 3

NOTES:

1. DIMENSIONS AND TOLERANCES ARE IN ACCORDANCE WITH ASME Y14.5M, 1994 UNLESS OTHERWISE SPECIFIED.

CONNECTOR NOTES:

- 2. HOUSING MATERIAL: UL 94 V-0 GLASS FILLED HIGH-TEMP THERMOPLASTIC
POWER CONTACT MATERIAL: COPPER ALLOY
SIGNAL PIN MATERIAL: COPPER ALLOY
- 3. SEE ITEM 1 & 2 IN PRINT 10064183 FOR PLATING SPEC OF 51939-074 AND 51939-074LF RESPECTIVELY.
- 4. MANUFACTURER'S NAME, P/N, AND DATE CODE TO APPEAR ON THIS SURFACE.
- 5. PRODUCT SPECIFICATION GS-12-149.
APPLICATION SPECIFICATION BUS-20-067.
- 6. PACKAGED IN TRAYS.

PCB NOTES:

- 7. ALL HOLE DIAMETERS ARE FINISHED HOLE SIZE.
- 8. MOUNTING HOLES, WHERE APPLICABLE, ARE UNPLATED.
- 9. $\varnothing .0453 \pm .0010$ [1.151 \pm 0.025] DRILLED HOLES PLATED WITH .0003 [0.008] MIN SnPb OVER .001 [0.03] TO .003 [0.08] Cu PLATING TO ACHIEVE $\varnothing .040 \pm .003$ [1.02 \pm .07] HOLE.
- 10. "DIM XXX" TO BE DETERMINED BY THE CUSTOMER.
- 11. CONNECTOR KEEP-OUT ZONE.

12. A \triangle SYMBOL WILL BE NEXT TO ANY DIMENSION, VIEW, OR NOTE WHICH HAS BEEN MODIFIED WITH THE CURRENT DRAWING REVISION.

mat'l code		SEE NOTE 2		tolerances unless otherwise specified		CUSTOMER		FCI	
ltr	ecn no.	dr	date	linear	.XX+ .01/0.X+0.3	COPY		www.fciconnect.com	
C				linear	.XXX+ .005/0.XX+0.13	projection		title 3ACP + 24S + 8P	
				angles	.XXX+ .002/0.XXX+0.051			RIGHT ANGLE SOLDER HEADER	
				dr	0°+2°	INCH/MM		product family PwrBlade code 213	
				enr	M. MOSTOLLER 7/30/03	scale		size dwg no 213	
				chr	M. MOSTOLLER 7/30/03	1:1		sheet 4 of 4	
				appd	H. BREWBAKER 7/30/03	A		51939-074	
sheet index	revision sheet								

cage code 22526