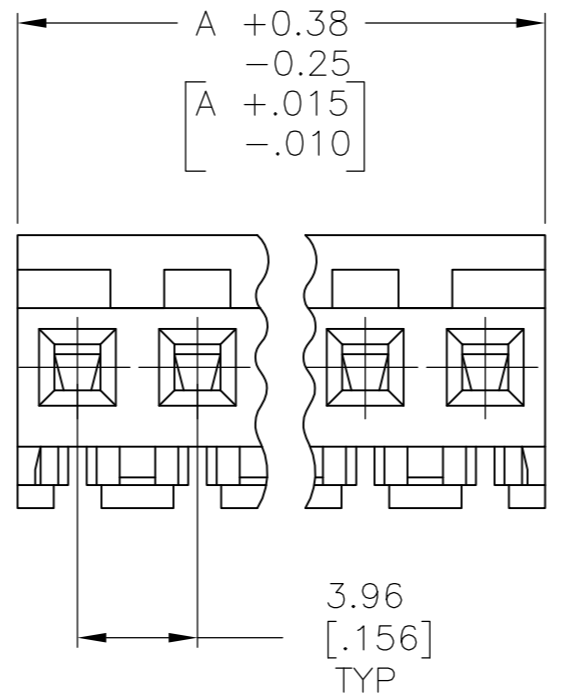
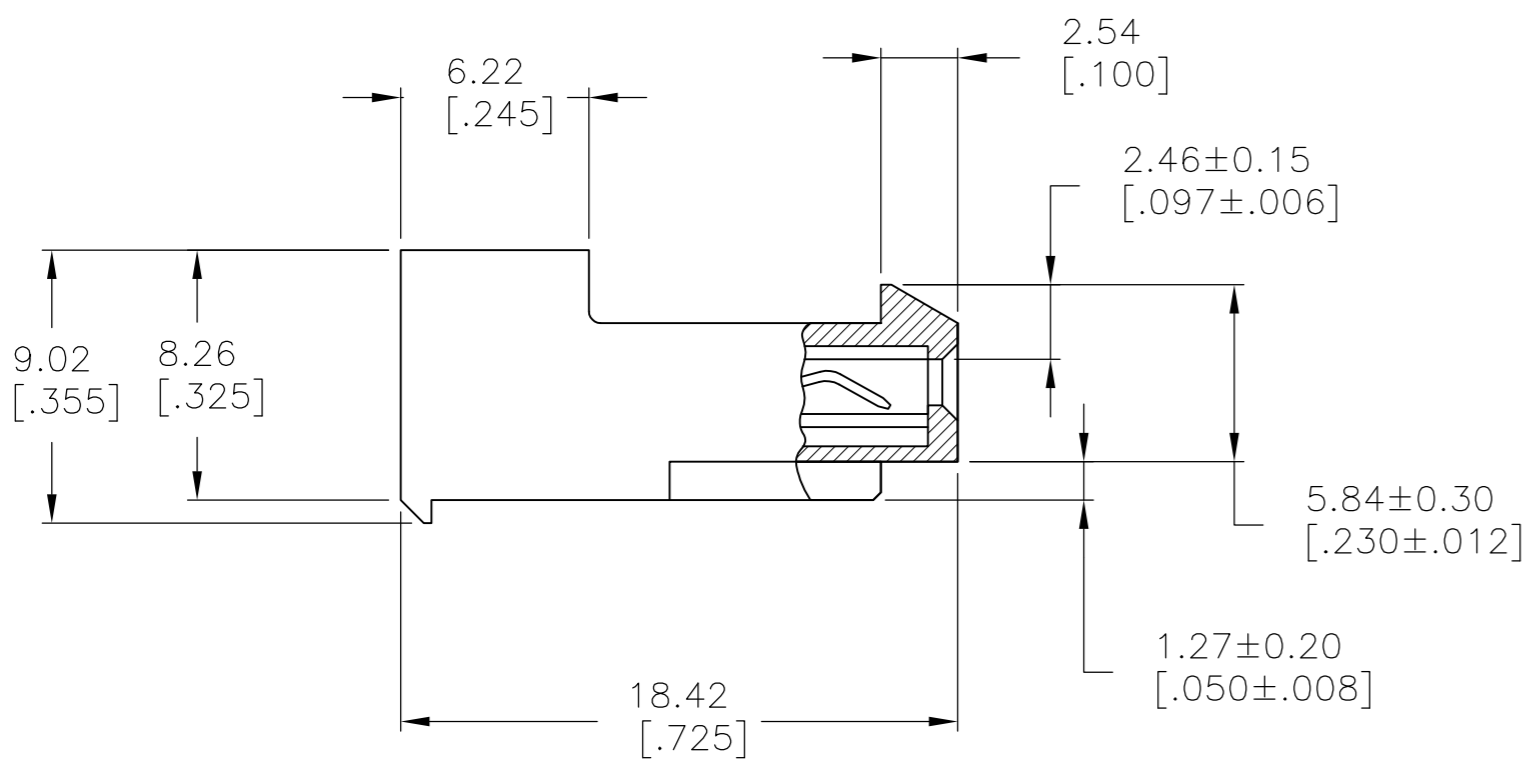
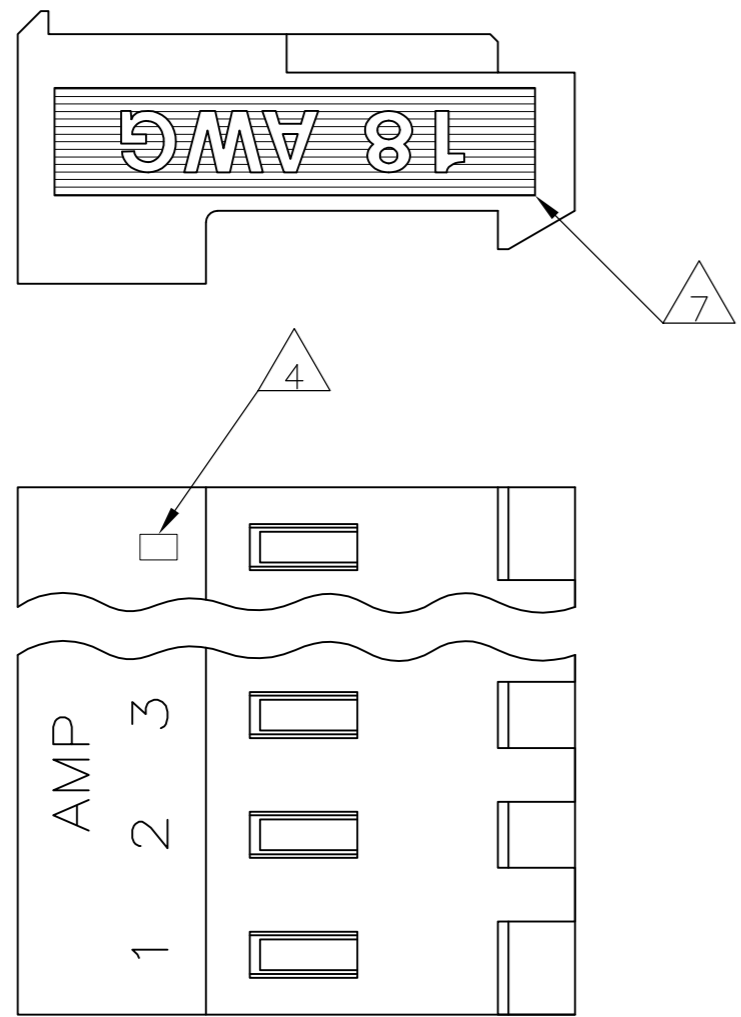


THIS DRAWING IS UNPUBLISHED. RELEASED FOR PUBLICATION
 © COPYRIGHT BY TYCO ELECTRONICS CORPORATION. ALL RIGHTS RESERVED.

LOC	DIST	REVISIONS					
		P	LTR	DESCRIPTION	DATE	DWN	APVD
CM	54		D	ECO-07-01288	22JUN07	KW	DB
			D1	REVISED PER ECO-09-021510	14SEP09	KK	AEG

- 1 MATERIAL: CONNECTOR - NYLON UL94V-0 (BLACK).
 CONTACTS - 0.30[.012] THICK COPPER ALLOY
 (BRIGHT-TIN LEAD 0.00203
 [.000080] MIN THK FOR CONTACTS
 644860-2 THRU 1-644860-2, MATTE
 WHISKER MITIGATED TIN 0.00203 (.000080)
 MIN THICKNESS FOR 3-644860-2 THRU
 4-644860-2)
- 2. CONTACTS ACCEPT 18 AWG WIRE WITH 2.41[.095] MAX
 INSULATION DIAMETER.
- 3. CONTACTS MUST ACCEPT 1.14±0.03[.045]
 POST AND REMAIN LOCKED IN POSITION.
- 4 IDENTIFICATION NUMBER FOR LAST CIRCUIT MAY
 NOT APPEAR ON ALL ASSEMBLIES.
- 5. DIMENSIONS IN BRACKETS ARE IN INCHES.
- 6. HOUSING FEATURES ARE: CLOSED END WITH
 LOCKING RAMP.
- 7 WIRE GAUGE IDENTIFICATION.
- 8 OBSOLETE PARTS: OBSOLETE CIS STREAMLINING PER
 D.RENAUD/D.SINISI



	47.55 [1.872]	12	4-644860-2
	43.59 [1.716]	11	4-644860-1
	39.62 [1.560]	10	4-644860-0
	35.66 [1.404]	9	3-644860-9
	31.70 [1.248]	8	3-644860-8
	27.74 [1.092]	7	3-644860-7
	23.77 [.936]	6	3-644860-6
	19.81 [.780]	5	3-644860-5
	15.85 [.624]	4	3-644860-4
	11.89 [.468]	3	3-644860-3
	7.92 [.312]	2	3-644860-2
8 SUPERSEDED	47.55 [1.872]	12	1-644860-2
	43.59 [1.716]	11	1-644860-1
	39.62 [1.560]	10	1-644860-0
8 SUPERSEDED	35.66 [1.404]	9	644860-9
	31.70 [1.248]	8	644860-8
	27.74 [1.092]	7	644860-7
	23.77 [.936]	6	644860-6
	19.81 [.780]	5	644860-5
	15.85 [.624]	4	644860-4
	11.89 [.468]	3	644860-3
	7.92 [.312]	2	644860-2
	DIM A	NO OF CIRCUITS	PART NO

THIS DRAWING IS A CONTROLLED DOCUMENT.

DIMENSIONS: mm [INCHES]	TOLERANCES UNLESS OTHERWISE SPECIFIED:	DWN B. LEWIS 22FEB95	22FEB95	Tyco Electronics Corporation Harrisburg, Pa 17105-3608
0 PLC ± -	1 PLC ± -	CHK R. SWING 22FEB95	22FEB95	
2 PLC ± -	3 PLC ± -	APVD D. CLARK 22FEB95	22FEB95	NAME MTA-156 CONNECTOR ASSEMBLY, 18 AWG, UL94V-0, SPECIAL
4 PLC ± -	ANGLES ± -	PRODUCT SPEC 108-1051	108-1051	
MATERIAL	FINISH	APPLICATION SPEC 114-1020	114-1020	SIZE A2
		WEIGHT -	-	CAGE CODE 00779
		CUSTOMER DRAWING		DRAWING NO C=644860
				RESTRICTED TO -
				SCALE 4:1
				SHEET 1 OF 1
				REV D1

