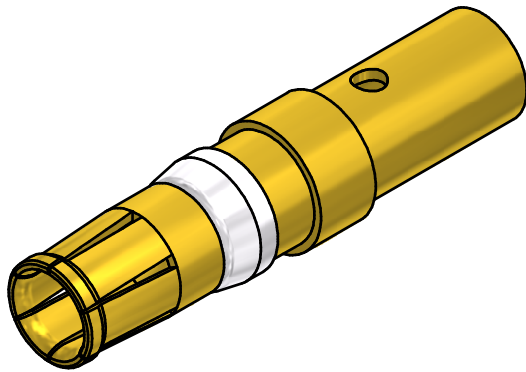
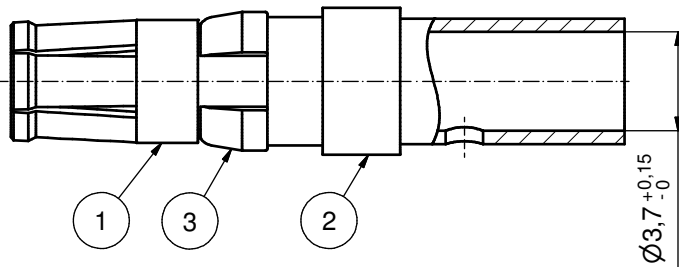
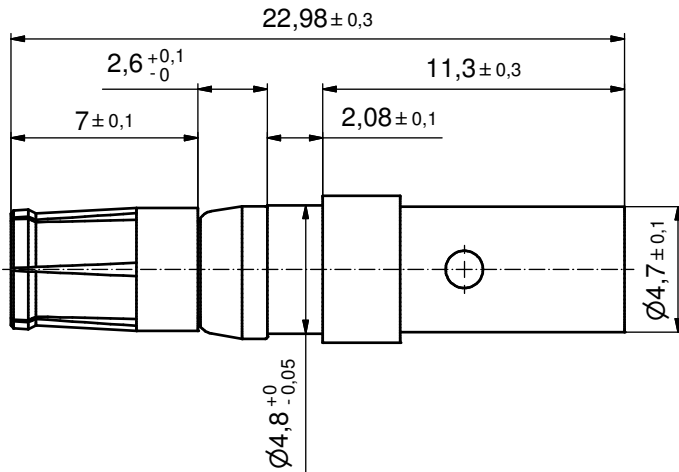


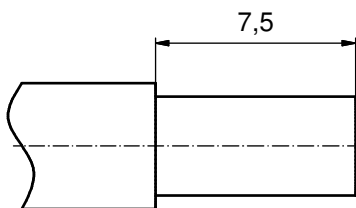
(c) (d)



(d) (b) NOTES:  
 CRIMPING:  
 USE CRIMP TOOL: 360X10409X  
 WITH TOOL INSERT: 360X20029X  
 SELECTOR SETTINGS: 7 FOR AWG 10  
 6 FOR AWG 12

plating	part no.
GOLD FLASH over NICKEL	<b>132A11039X</b>
30µin HARD GOLD over min. 50µin NICKEL	<b>132C11039X</b>
50µin HARD GOLD over min. 50µin NICKEL	<b>132J11039X</b>

(b) STRIPPING DIMENSIONS



RoHS compliant

pos	qty	description	material	plating
3	1	RETAINING RING	COPPER ALLOY	NICKEL PLATED
2	1	REAR SIDE	COPPER ALLOY	GOLD FLASH over NICKEL
1	1	MATING SIDE	COPPER ALLOY	see table

partlist				tolerance	dim. in mm	scale:	5:1
				date	name	material: see partlist	
				drawn	23.03.98	title:	
				appd.	23.03.98	HIGH POWER CONTACT FEMALE	
				4 x d	Å5877	CRIMP VERSION 30A	
				1 x c	Å2197	D-SUB COMBINATION	
				2 x b	Å2177	dwg no:	
				a	Original	13K11E9A	
				rev.	description	part no: see table	
				date		DIN-A3	
				name		sh: 1	



THIS DRAWING MAY NOT BE COPIED OR REPRODUCED IN ANY WAY, AND MAY NOT BE PASSED ON TO A THIRD PARTY WITHOUT WRITTEN PERMISSION. OWNERSHIP AND COPYRIGHT OF CONEC GmbH DO NOT ALTER CAD DRAWING BY HAND