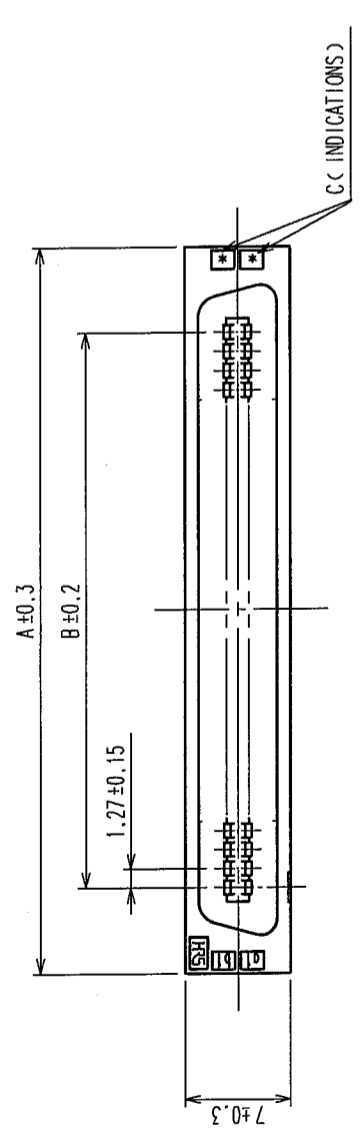
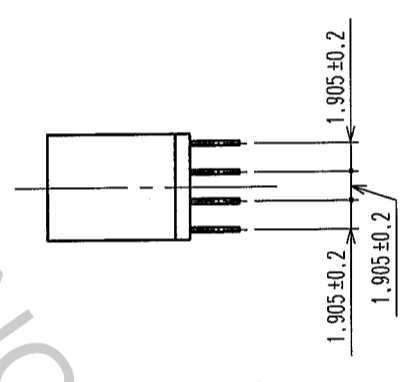
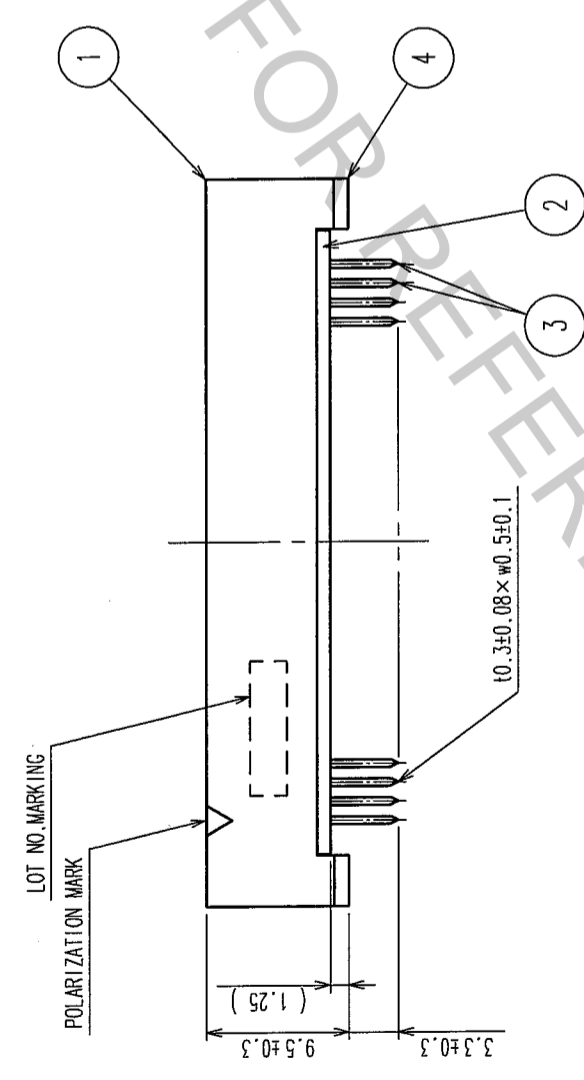
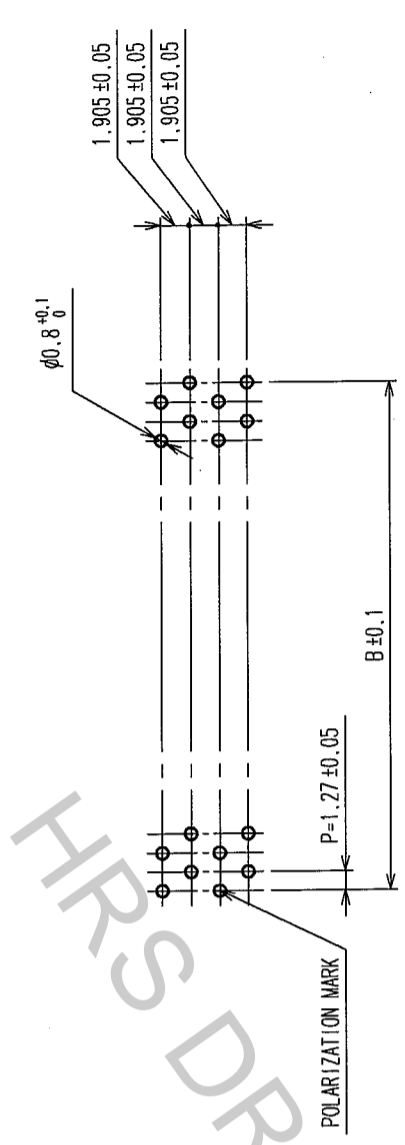


5	6	7	8	
COUNT	DESCRIPTION OF REVISIONS	BY	CHKD	DATE

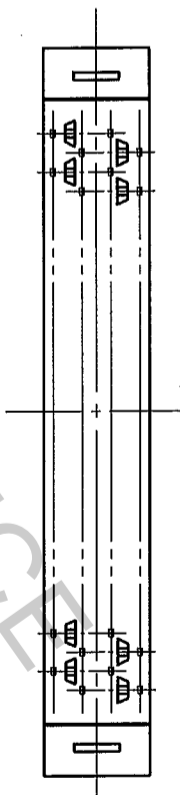


RECOMMEND PC BOARD HOLE PATTERN ( MOUNTING SIDE )  
t=1.6



PART No.	CODE No.	A	B	C
FX2C1-20P-1.27DSA(71)	CL572-2211-1-71	20	22.75	11.43
FX2C1-32P-1.27DSA(71)	CL572-2212-4-71	32	30.37	19.05
FX2C1-40P-1.27DSA(71)	CL572-2213-7-71	40	35.45	24.13
FX2C1-52P-1.27DSA(71)	CL572-2214-0-71	52	43.07	31.75
FX2C1-60P-1.27DSA(71)	CL572-2215-2-71	60	48.15	36.83
FX2C1-68P-1.27DSA(71)	CL572-2216-5-71	68	53.23	41.91
FX2C1-80P-1.27DSA(71)	CL572-2217-8-71	80	60.85	49.53
FX2C1-100P-1.27DSA(71)	CL572-2218-0-71	100	73.55	62.23
FX2C1-120P-1.27DSA(71)	CL572-2219-3-71	120	86.25	74.93

NOTES 1. THE DIMENSIONS IN PARENTHESES ARE FOR REFERENCE.  
2. NUMBER OF PIN.



4	POLYAMIDE	BLACK	UL94V-0	3	PHOSPHOR BRONZE	CONTACT AREA: GOLD 0.2μ m min
1,2	POLYAMIDE	BLACK	UL94V-0			DIP AREA: TIN-PLATING 2μ m min
NO.	MATERIAL	FINISH, REMARKS	NO.	MATERIAL	FINISH, REMARKS	UNDER PLATING: NICKEL 2μ m min
CODE NO. (OLD)	CL		DRAWN	DESIGNED	CHECKED	APPROVED
			I. OKAYAMA	K. NAKAMURA	H. OKAWA	H. OKAWA
			04.06.02	04.06.02	04.06.09	04.06.09
DRAWING NO.	EDC3-083047-21		PART NO.	FX2C1-**-P-1.27DSA(71)		
SCALE	FREE		CODE NO.	CL572		
UNITS	mm					

TO	
PCK	