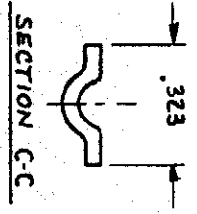
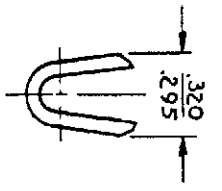
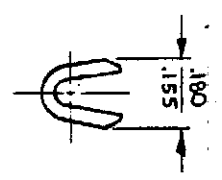
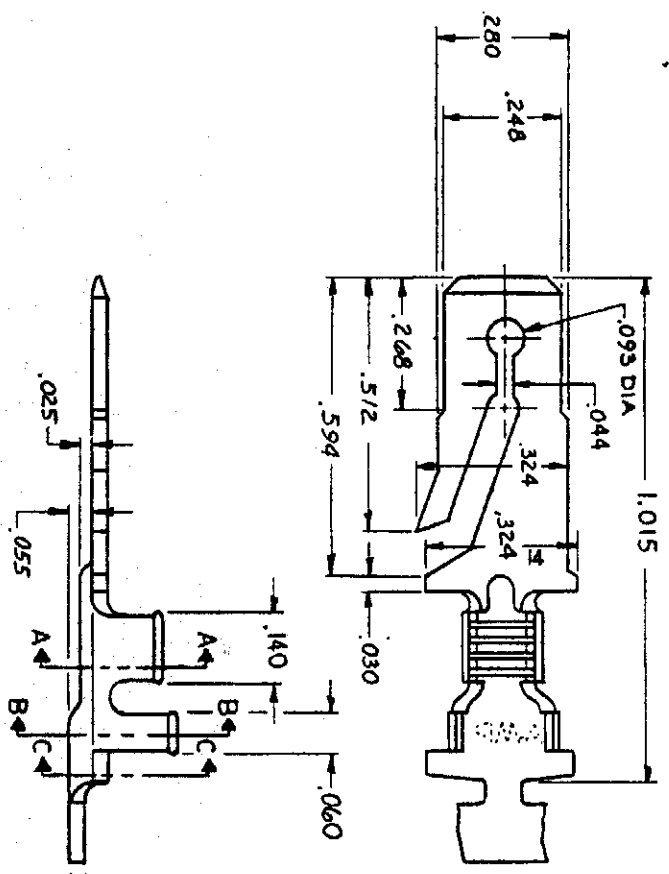


© COPYRIGHT 1977 BY AMP INCORPORATED, HANNSBURG, PA.
 ALL INTERNATIONAL RIGHTS RESERVED. ALL UNINCORPORATED PRODUCTS
 COVERED BY U. S. PATENT OFFICE PATENTS AND PATENTS PENDING.
 THIS DRAWING IS THE PROPERTY OF AMP INCORPORATED.
 IT IS TO BE KEPT IN CONFIDENTIALITY AND NOT REPRODUCED OR
 TRANSMITTED IN ANY FORM OR BY ANY MEANS, ELECTRONIC OR MECHANICAL,
 WITHOUT PERMISSION IN WRITING FROM AMP INCORPORATED.



641256-1		TIN	100-142	18-14	64041G-2
LOOSE PIECE		FINISH	INSULATION RANGE	WIRE SIZE	PART NO
NONE				18-14	64041G-1
UNLESS OTHERWISE SPECIFIED, DIMENSIONS ARE IN INCHES AND DECIMALS THEREOF ARE TO REMAIN AS SHOWN.		CONTRACT NO	AMP INCORPORATED HANNSBURG, PA.		
MATERIAL		DR	NAME		
OB2		DR	"250" BLADE		
BRASS		CHK	AMP INCORPORATED		
FINISH		APPD	DATE		
SEE TABLE		APPD	11/21/77		
		DESIGN APPD	11/21/77		
		OTHER APPD			
SIZE		CODE IDENT NO	DRAWING NO		
B		00779	64041G		
SCALE		SHEET			

CUSTOMER DRAWING

AMP 1470-15 (7-73)