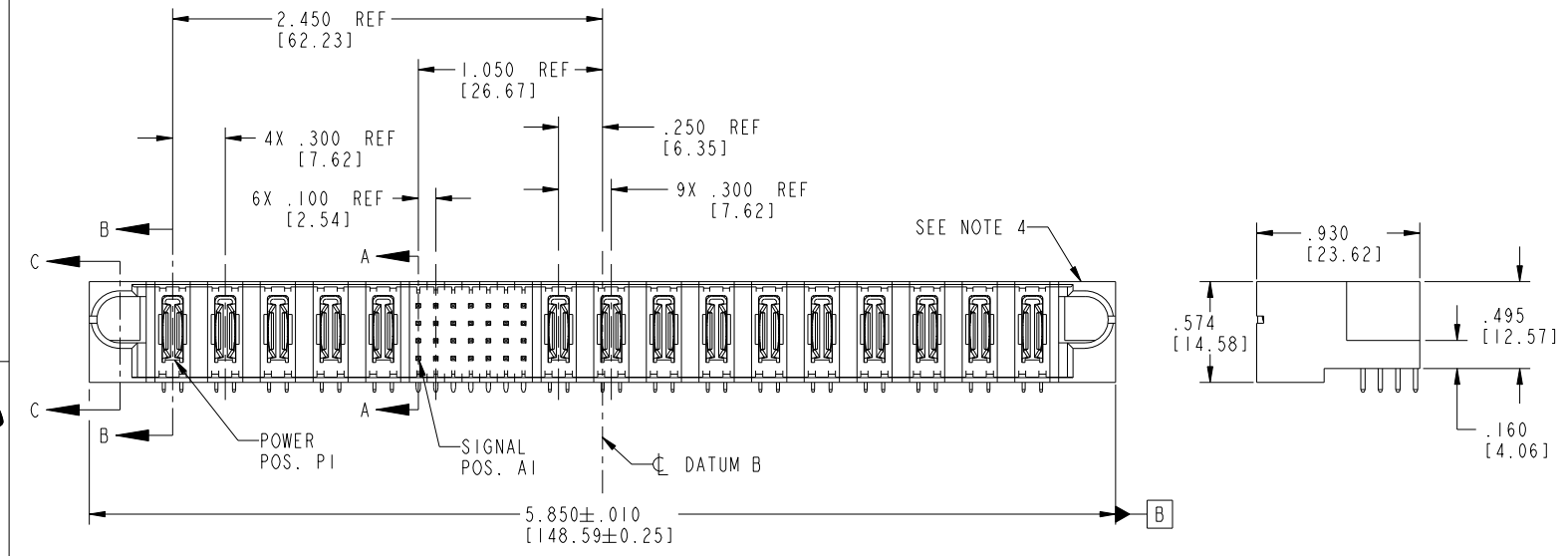
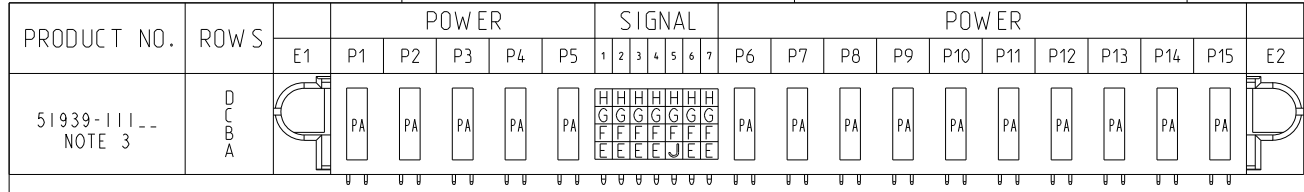


Tous droits strictement réservés. Reproduction ou communication à des tiers interdite sous quelque forme que ce soit sans autorisation écrite du propriétaire. Propriété de c FCI. Droits de reproduction FCI.



All rights strictly reserved. Reproduction or issue to third parties in any form whatever is not permitted without written authority from the proprietor. Property of FCI. Copyright FCI.



CODE	DIM "M" MATING LENGTH	CONTACT TYPE
E	.220 [5.59]	SIGNAL
F	.220 [5.59]	SIGNAL
G	.220 [5.59]	SIGNAL
H	.220 [5.59]	SIGNAL
J	.170 [4.32]	SIGNAL
PA	N/A [N/A]	POWER

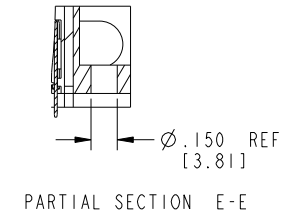
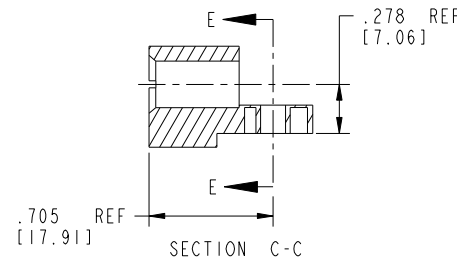
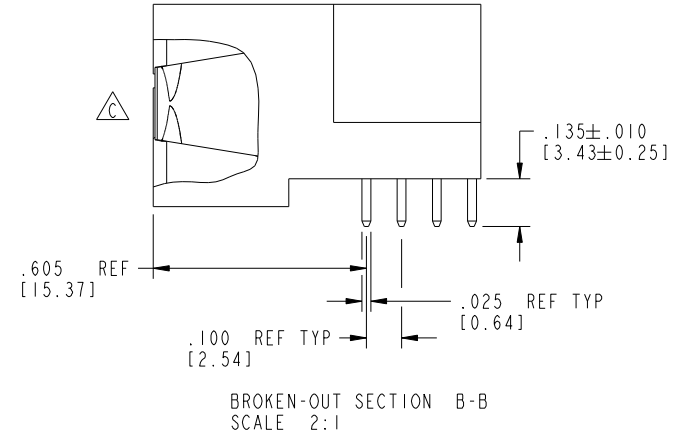
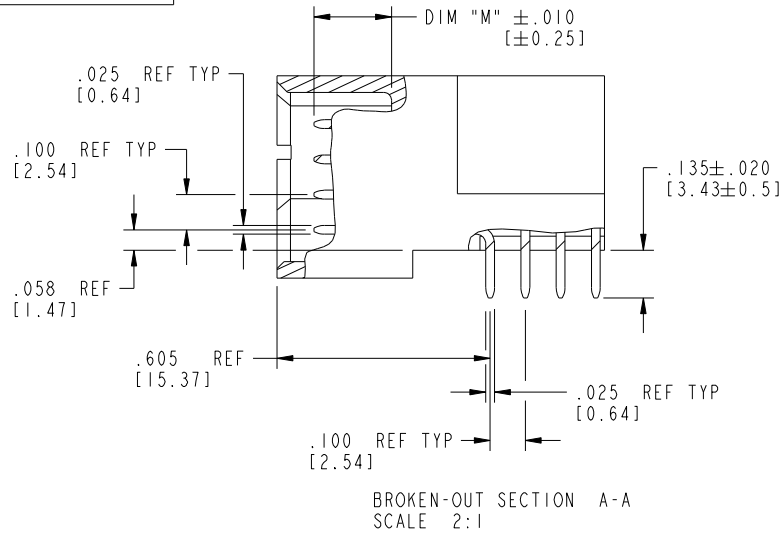
mat'l code				SEE NOTE 2		tolerances unless otherwise specified	
ltr	ecn no.	dr	date	linear	.XX±.01/0.X±0.3	projection	
A	V04-0266	TAB	03/15/04		.XXX±.005/0.XX±0.13		
B	DG06-0013	RYAN	01/10/06		.XXX±.0020/0.XXX±0.051		
C	DG09-0003	WD	02/09/09	angles	0°±2°		
				dr	T. BRUNGARD 03/15/04		
				enr	M. GRAY 03/15/04		
				chr	M. GRAY 03/15/04		
				appd	M. GRAY 03/15/04		
sheet index	revision sheet	C 1	C 2	C 3	C 4		

CUSTOMER		FCI	
COPY		www.fciconnect.com	
title		5ACP + 28S + 10ACP	
RIGHT ANGLE SOLDER HEADER		product family PwrBlade code 213	
size		dwg no 51939-111 sheet 1 of 4	
scale 1:1		cage code 22526	

Tous droits strictement réservés. Reproduction ou communication à des tiers interdite sous quelque forme que ce soit sans autorisation écrite du propriétaire. Propriété de c.FCI. Droits de reproduction FCI.

All rights strictly reserved. Reproduction or issue to third parties in any form whatsoever is not permitted without written authority from the proprietor. Property of FCI. Copyright FCI.

PRODUCT NUMBER  
51939-111--  
NOTE 3



mat'l code		SEE NOTE 2		tolerances unless otherwise specified		CUSTOMER		FCI	
ltr	ecn no.	dr	date	linear	.XX±.01/0.X±0.3	COPY		www.fciconnect.com	
C					.XXX±.005/0.XX±0.13	projection		title 5ACP + 28S + 10ACP	
				angles	.XXX±.0020/0.XXX±0.051	INCH/MM		RIGHT ANGLE SOLDER HEADER	
				dr	0°+2°	scale		product family PwrBlade code 213	
				enr	T. BRUNGARD 03/15/04	1:1		size dwg no 51939-111 sheet 2 of 4	
				chr	M. GRAY 03/15/04				
				appd	M. GRAY 03/15/04				
sheet index	revision sheet								

cage code 22526

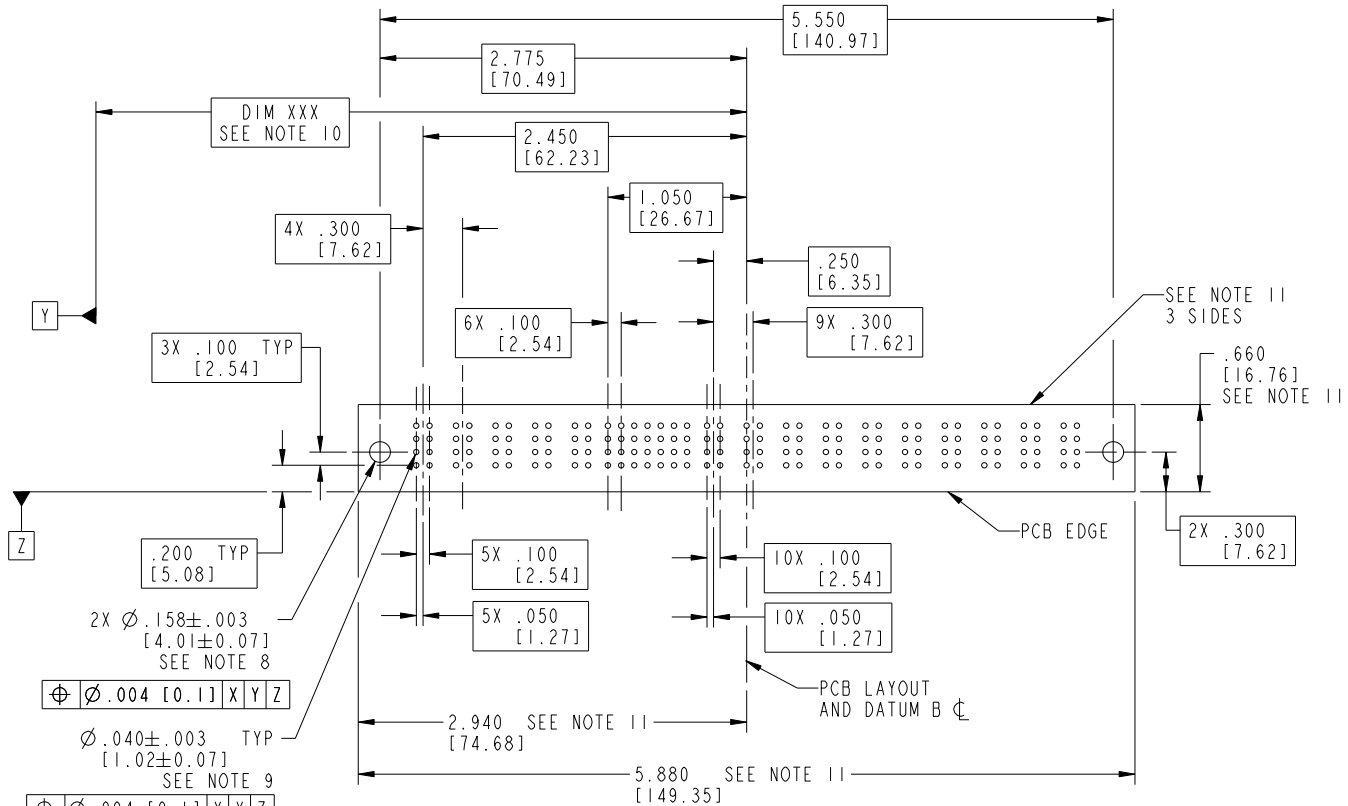
Pro/E

Tous droits strictement reserves. Reproduction ou communication a des tiers interdite sous quelque forme que ce soit sans autorisation ecrite du propriétaire. Propriete de c FCI. Droits de reproduction FCI.



All rights strictly reserved. Reproduction or issue to third parties in any form whatsoever is not permitted without written authority from the proprietor. Property of FCI. Copyright FCI.

PRODUCT NUMBER  
51939-111--  
NOTE 3



RECOMMENDED PCB LAYOUT

mat'l code		SEE NOTE 2		tolerances unless otherwise specified		CUSTOMER		 www.fciconnect.com	
ltr	ecn no.	dr	date	linear	.XX±.01/0.X±0.3	COPY		title	
C					.XXX±.005/0.XX±0.13	projection		5ACP + 28S + 10ACP	
				angles	.XXX±.002/0.XXX±0.051			RIGHT ANGLE SOLDER HEADER	
				dr	0°±2°	INCH/MM		product family	
				enr	T. BRUNGARD 03/15/04	scale		PwrBlade	
				chr	M. GRAY 03/15/04	3:4		code	
				appd	M. GRAY 03/15/04	A		213	
sheet index		revision sheet				size		dwg no	
						51939-111		3 of 4	

cage code 22526

Tous droits strictement reserves. Reproduction ou communication a des tiers interdite sous quelque forme que ce soit sans autorisation écrite du propriétaire. Propriete de c FCI. Droits de reproduction FCI.



All rights strictly reserved. Reproduction or issue to third parties in any form whatever is not permitted without written authority from the proprietor. Property of FCI. Copyright FCI.

PRODUCT NUMBER  
51939-111--  
NOTE 3

NOTES:

1. DIMENSIONS AND TOLERANCES ARE IN ACCORDANCE WITH ASME Y14.5M, 1994 UNLESS OTHERWISE SPECIFIED.

CONNECTOR NOTES:

- 2. HOUSING MATERIAL: UL 94 V-0 GLASS FILLED HIGH-TEMP THERMOPLASTIC  
POWER CONTACT MATERIAL: COPPER ALLOY  
SIGNAL PIN MATERIAL: COPPER ALLOY

3. SEE ITEM 1 & 2 IN PRINT 10064183 FOR PLATING SPEC OF 51939-111 AND 51939-111LF RESPECTIVELY.

- 4. MANUFACTURER'S NAME, P/N, AND DATE CODE TO APPEAR ON THIS SURFACE.

5. PRODUCT SPECIFICATION GS-12-149.  
APPLICATION SPECIFICATION BUS-20-067.

6. PACKAGED IN TRAYS.

PCB NOTES:

7. ALL HOLE DIAMETERS ARE FINISHED HOLE SIZE.

- 8. MOUNTING HOLES, WHERE APPLICABLE, ARE UNPLATED.

- 9.  $\varnothing .0453 \pm .0010$  [1.151  $\pm$  0.025] DRILLED HOLES PLATED WITH  
.0003 [0.008] MIN SnPb OVER .001 [0.03]  
TO .003 [0.08] Cu PLATING TO ACHIEVE  
 $\varnothing .040 \pm .003$  [1.02  $\pm$  .07] HOLE.

- 10. "DIM XXX" TO BE DETERMINED BY THE CUSTOMER.

- 11. CONNECTOR KEEP-OUT ZONE.

12. A  $\triangle$  SYMBOL WILL BE NEXT TO ANY DIMENSION, VIEW, OR NOTE WHICH HAS BEEN MODIFIED WITH THE CURRENT DRAWING REVISION.

mat'l code		SEE NOTE 2		tolerances unless otherwise specified		CUSTOMER		FCI		www.fciconnect.com	
ltr	ecn no.	dr	date	linear	.XX±.01/0.X±0.3	COPY					
C				projection	.XXX±.005/0.XX±0.13	title		5ACP + 28S + 10ACP			
				angles	.XXX±.002/0.XXX±0.051	RIGHT ANGLE SOLDER HEADER					
				dr	0°+2°	product family		PwrBlade		code	
				enr	T. BRUNGARD 03/15/04	INCH/MM		size		213	
				chr	M. GRAY 03/15/04	scale		dwg no		sheet	
				appd	M. GRAY 03/15/04	1:1		A 51939-111		4 of 4	
sheet index	revision sheet										

cage code 22526