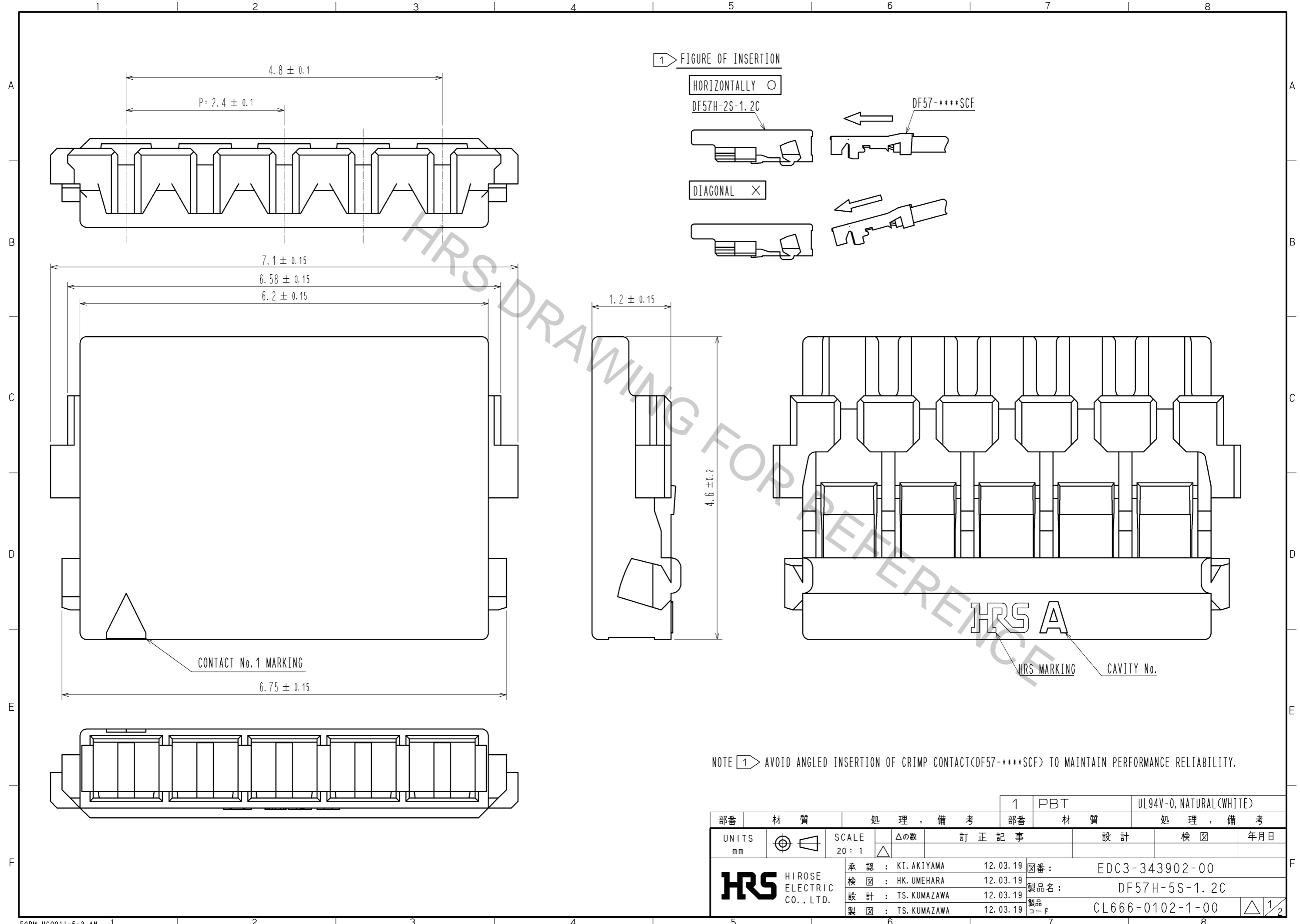


Apr.1.2017 Copyright 2017 HIROSE ELECTRIC CO., LTD. All Rights Reserved.



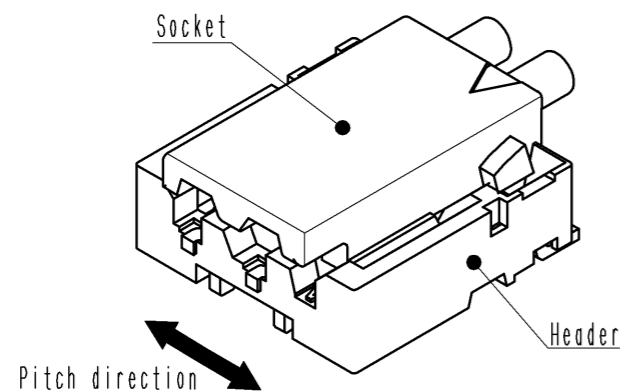
NOTE 1 AVOID ANGLED INSERTION OF CRIMP CONTACT(DF57-****SCF) TO MAINTAIN PERFORMANCE RELIABILITY.

UNITS mm		SCALE 20:1		訂正記事		設計		検 査		年月日	
HRS HIROSE ELECTRIC CO., LTD.		承認 : KI. AKIYAMA 12.03.19		検 査 : HK. UMEHARA 12.03.19		設 計 : TS. KUMAZAWA 12.03.19		製 図 : TS. KUMAZAWA 12.03.19		1 PBT UL94V-0, NATURAL(WHITE) 部番 材 質 処 理 , 備 考 部番 材 質 処 理 , 備 考 図番 : EDC3-343902-00 製品名 : DF57H-5S-1.2C 製品コード : CL666-0102-1-00	

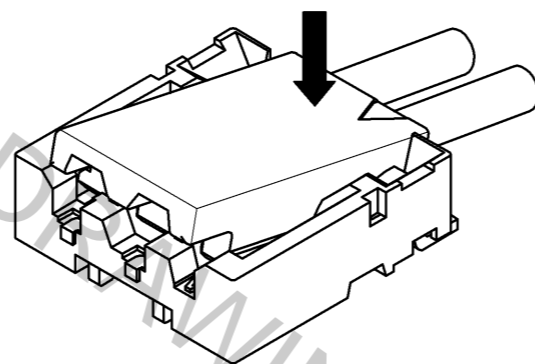
DF57 Series Mating / Unmating Operation Instruction

Mating

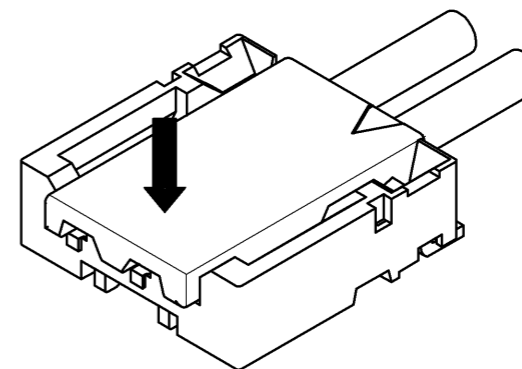
① By positioning the convexity of the socket sides to the header concavity, align the centers of the socket and the header in pitch direction.



② Slightly press the socket down at cable side to tilted angle.

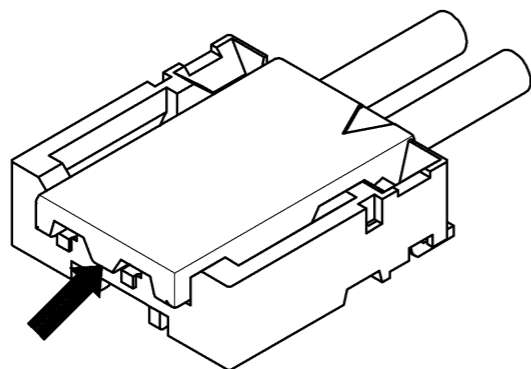


③ Press down at the lever side with stabilizing the cable side to insert. Mating completes.

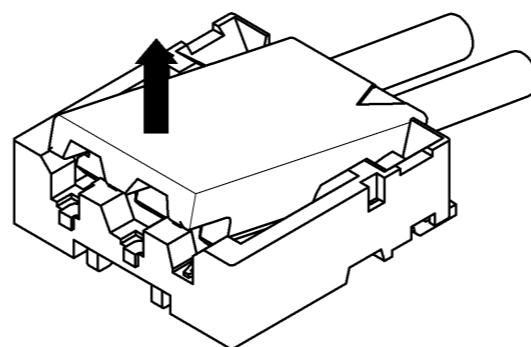


Unmating

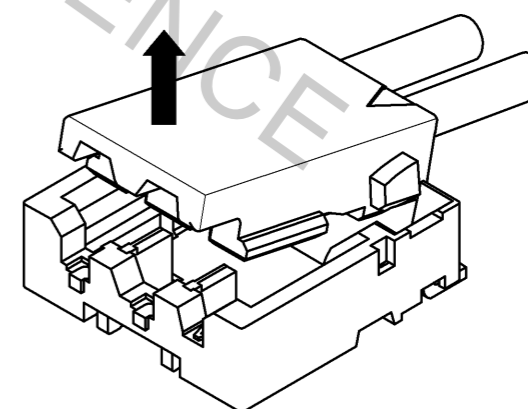
① Hook the lever with finger nail.



② Lift up to the upper direction and friction lock is released.



③ Lift up to the upper direction and positive lock is released. Removal completes.



HRS	DRAWING NO.	EDC3-343902-00	△ 2/2
	PART NO.	DF57H-5S-1.2C	
	CODE NO.	CL666-0102-1-00	