

DIMENSIONS ARE IN INCHES		UNLESS OTHERWISE NOTED	TOLERANCES ARE:
ONE PLACE DECIMALS ± .1 [2.54]	THREE PLACE DECIMALS ± .005 [.127]	ANGLES ± 2°	
TWO PLACE DECIMALS ± .01 [.254]	FOUR PLACE DECIMALS ± .0020 [.051]		

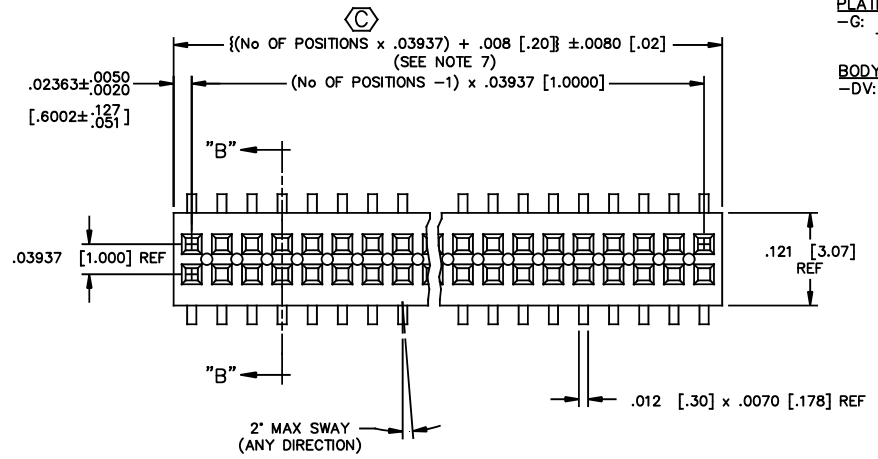
TITLE: 1mm DUAL ROW STRIP ASSEMBLY

DWG NO: MLE-1XX-XX-X-DV-X
SHEET 1 OF 3

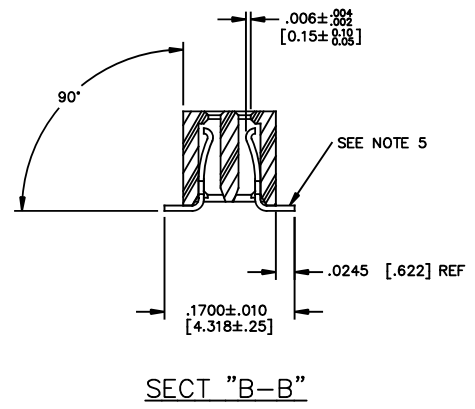
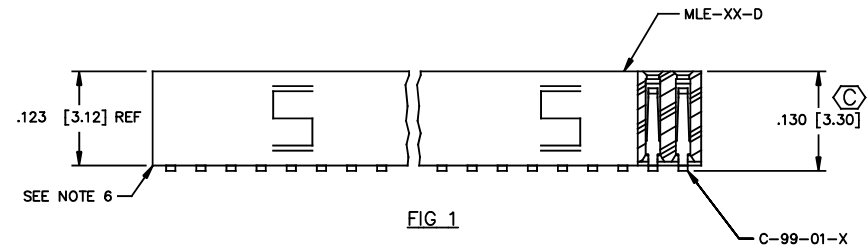
PATENT NUMBERS
5713755 / 5961339

MLE-1XX-XX-X-DV-X

- No OF POSITIONS
-02 THRU -75 (PER ROW)
- LEAD STYLE
-01: SURFACE MOUNT (USE C-99-01-X)
- PLATING SPECIFICATION
-G: .000010 GOLD ON .000050 TO .000100 NICKEL
- BODY SPECIFICATION
-DV: DOUBLE VERTICAL (USE MLE-XX-D)
- OPTION
-A: ALIGNMENT PIN (SEE FIG 2 & 3, SHT 2) (USE MLE-XX-D-XX) (MOLDED TO POSITION OR STAKED) (SAMTEC DISCRETION WHICH -A PIN IS USED) (MOLDED 3 POSITION MIN. SEE FIG 2, SHT 2) (STAKED 7 POSITION MIN. SEE FIG 3, SHT 2)
-P: PICK & PLACE PAD (SEE FIG 4, SHT 2) (USE LMP-01) POSITIONS-05, AND -06 MUST BE PACKAGED IN T&R (AVAILABLE ON POSITIONS -05 THRU -75 ONLY)
-K: POLYIMIDE FILM PAD (SEE FIG 5, SHT 2) (-05 POSITIONS MINIMUM) (USE K-DOT-.157-.250-.005)
-TR: TAPE & REEL (SEE FIG 6, SHT 3)



DO NOT SCALE FROM THIS PRINT



- NOTES:
- MINIMUM PUSHOUT FORCE: .5 lb.
 - COPLANARITY; POS -02 THRU -26: $.004\ [0.10]$
 - Ⓢ REPRESENTS AS CRITICAL DIMENSION $.006\ [0.15]$
 - POSITIONS -05, -06 WITH PICK AND PLACE PADS -P TO BE PACKAGED IN T&R, POSITIONS -05, 06 WITHOUT PICK AND PLACE PADS -P AND POSITIONS -07 THRU -75 WITH OR WITHOUT PICK AND PLACE PADS -P TO BE PACKAGED IN TUBES, POSITIONS -02 THRU -04 TO BE LAYER PACKAGED.
 - BURR ALLOWANCE: $.003\ [0.08]\ MAX$
 - $.010\ [0.25]\ MAX$ CUT FLASH NOT TO PROTRUDE BELOW LEADS.
 - WILL LOSE TWO POSITIONS FOR EVERY CUT MADE. MAXIMUM CUT FLASH TO BE $.010\ [0.25]$ WITH NO FLASH IN HOLES OR EXTENDING BELOW LEADS.
 - ENDWALL THICKNESS TO BE SYMMETRICAL WITHIN $.005\ [0.13]$.

PROPRIETARY NOTE
THIS DOCUMENT CONTAINS CONFIDENTIAL AND PROPRIETARY INFORMATION AND ALL RIGHTS, MANUFACTURING, REPRODUCTION, USE, PATENT RIGHTS AND TRADE SECRETS ARE EXPRESSLY RESERVED BY SAMTEC, INC. THIS DOCUMENT SHALL NOT BE REPRODUCED, IN WHOLE OR PART, IN ANY MANNER WITHOUT THE EXPRESS WRITTEN PERMISSION OF SAMTEC, INC.

MATERIAL:
INSULATOR:
BLACK LIQUID CRYSTAL POLYMER

TERMINAL:
BERYLLIUM COPPER

EXISPROD\ASSEMBLY\1MM
MLE-ASM

samtec

520 PARK EAST BLVD. NEW ALBANY, INDIANA 47150
PHONE (812) 944-6733 P.O. BOX 1147
CODE 55322

MADE BY: D PURVIS 01-07-97

MLE-1XX-XX-X-DV-X
SHEET 1 OF 3