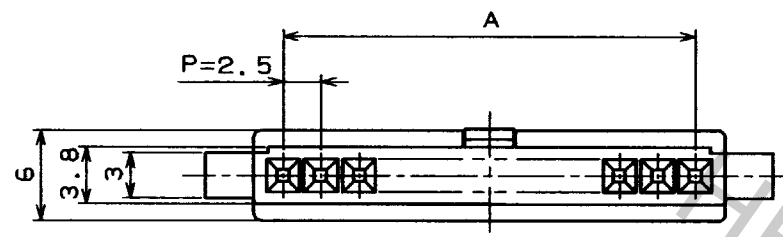
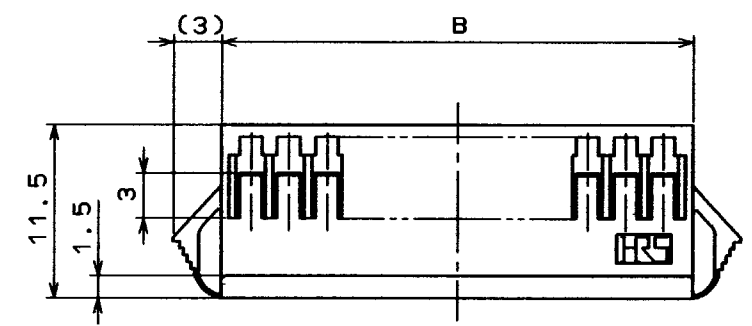
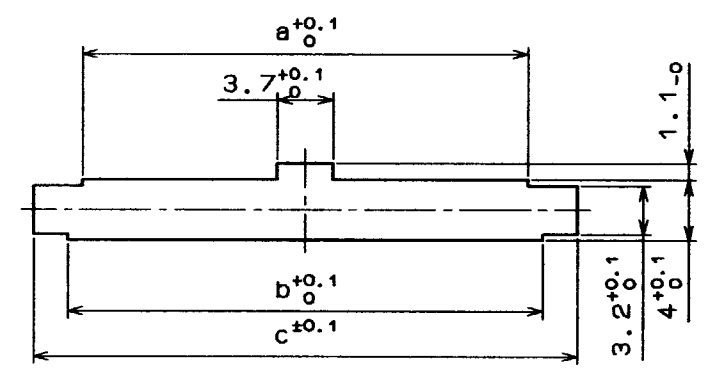


Apr. 1-2017 Copyright 2017 HIROSE ELECTRIC CO., LTD. All Rights Reserved.

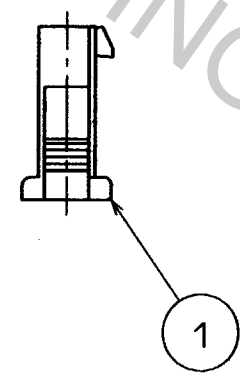
| COUNT | DESCRIPTION OF REVISIONS | BY | CHKD | DATE | COUNT | DESCRIPTION OF REVISIONS | BY | CHKD | DATE |
|-------|--------------------------|----|------|------|-------|--------------------------|----|------|------|
| | | | | | | | | | |
| | | | | | | | | | |
| | | | | | | | | | |



< PANEL CUTOUT >



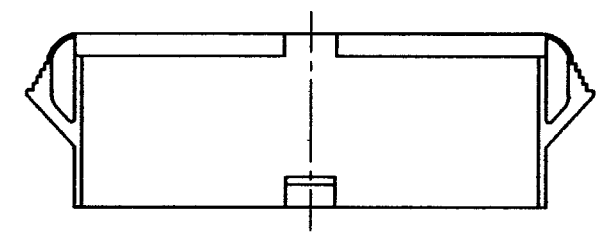
PLEASE NOTE THAT A DIMENSION (PANEL THROUGH HOLE) VARY WITH THICKNESS OF PANEL WHEN YOU MOUNT DF1B EXTENSION SOCKET TO THE PANEL. AND PLEASE PROCESS THE PANEL THROUGH HOLE WITHOUT BURR.



CONTACT NO. 1 NUMBER OF CONTACTS



CAVITY NO.



| HRS NO. | PART NO. | A | B | PANEL CUTOUT | | | | |
|--------------|----------------|------|------|--------------|------|-----------------|---------|---------|
| | | | | a | b | PANEL THICKNESS | | |
| | | | | | | 0.5-1.2 | 1.3-1.6 | 1.7-2.0 |
| CL541-0320-8 | DF1B-2ES-2.5RC | 2.5 | 6.5 | 4.7 | 6.7 | 10.8 | 11.3 | 12.0 |
| 0321-0 | 3 | 5.0 | 9.0 | 7.2 | 9.2 | 13.3 | 13.8 | 14.5 |
| 0322-3 | 4 | 7.5 | 11.5 | 9.7 | 11.7 | 15.8 | 16.3 | 17.0 |
| 0323-6 | 5 | 10.0 | 14.0 | 12.2 | 14.2 | 18.3 | 18.8 | 19.5 |
| 0324-9 | 6 | 12.5 | 16.5 | 14.7 | 16.7 | 20.8 | 21.3 | 22.0 |
| 0325-1 | 7 | 15.0 | 19.0 | 17.2 | 19.2 | 23.3 | 23.8 | 24.5 |
| 0326-4 | 8 | 17.5 | 21.5 | 19.7 | 21.7 | 25.8 | 26.3 | 27.0 |
| 0327-7 | 9 | 20.0 | 24.0 | 22.2 | 24.2 | 28.3 | 28.8 | 29.5 |
| 0328-0 | 10 | 22.5 | 26.5 | 24.7 | 26.7 | 30.8 | 31.3 | 32.0 |
| 0329-2 | 11 | 25.0 | 29.0 | 27.2 | 29.2 | 33.3 | 33.8 | 34.5 |
| 0330-1 | 12 | 27.5 | 31.5 | 29.7 | 31.7 | 35.8 | 36.3 | 37.0 |
| 0331-4 | 13 | 30.0 | 34.0 | 32.2 | 34.2 | 38.3 | 38.8 | 39.5 |

| | | | | | |
|------------------------------|--|------------------------------|-------------------------|-------------|----------|
| NO. MATERIAL FINISH, REMARKS | | 1 POLYAMIDE | NATURAL (WHITE) UL94V-0 | | |
| CODE NO. (OLD) | | NO. MATERIAL FINISH, REMARKS | | | |
| DRAWN | | DESIGNED | CHECKED | APPROVED | RELEASED |
| M. Gotoh | | M. Gotoh | J. Oma | H. Yamamoto | |
| '94. 3. 24 | | '94. 3. 24 | 94. 3. 25 | 94. 3. 25 | |
| DRAWING NO. EDC3-160093-02 | | PART NO. DF1B-*ES-2.5RC | | | |
| SCALE 2:1 | | CODE NO. 0320 8 | | 1/1 | |
| UNITS mm | | CL541-0331-4 | | 1/1 | |

| |
|----|
| TO |
| |
| |
| |