

PRODUCT NUMBER	PITCH
KDxx30x100J0G	3.81 mm

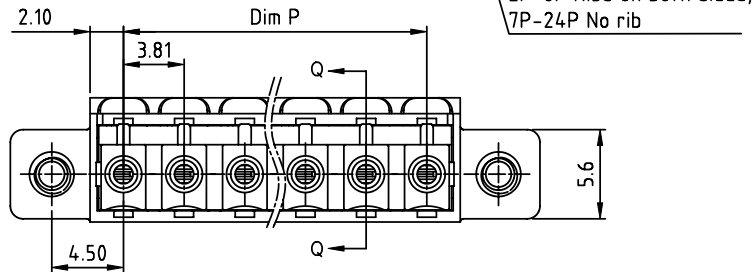
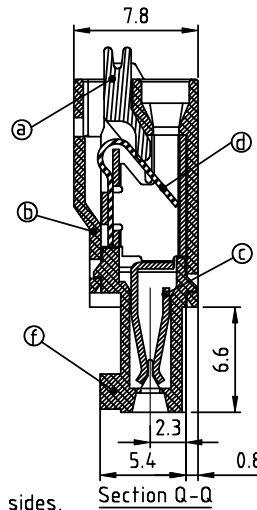
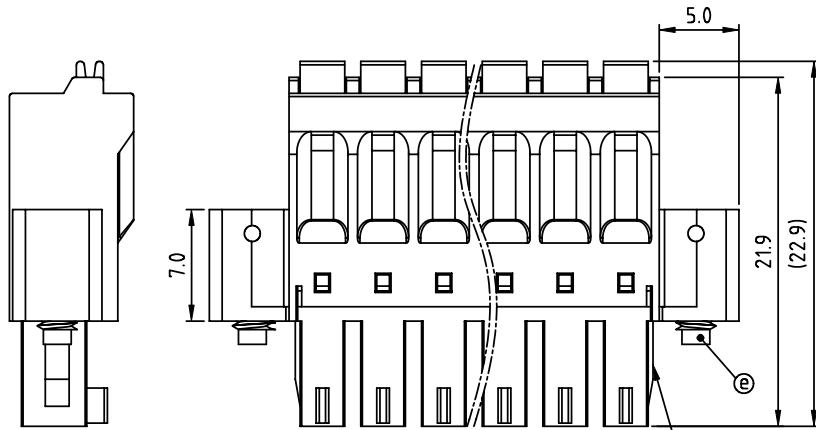
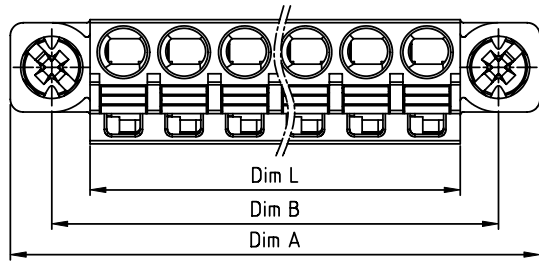
Dim P=(N-1)×3.81
Dim L=N×3.81+0.39
Dim A=N×3.81+10.39
Dim B=(N-1)×3.81+9.0

N=Number of poles

POLES	Dim P	Dim L	Dim A	Dim B
2p-6p	±0.15	±0.15	±0.15	±0.15
7p-12p	±0.20	±0.25	±0.25	±0.25
13p-16p	±0.25	±0.30	±0.30	±0.30
17p-24p	±0.30	±0.40	±0.40	±0.40

PART NO.: KD xx 3 0 x 1 00J0 G

	Color	RoHS compliant (lead<4%) In copper Alloy
Solid block	0 Black (RAL9005)	
No. of poles	2 Red (RAL3001/D)	
02 2 poles	3 Orange(RAL2011/P)	
03 3 poles	4 Yellow(RAL1018/A)	
...	5 Green(RAL6018/T)	
24 24 poles	6 Blue (RAL5015/A)	
	8 Grey(RAL7035/D)	
	9 White(RAL1102)	
	C Green(RAL6018/U)	



Material:

- ItemⒶ Terminal lever: Thermoplastic (UL94V-0) Orange (RAL2001/P)
- ItemⒷ Top body: Thermoplastic (UL94V-0)
- ItemⒸ Female contact :PhBz Tin Plated
- ItemⒹ Spring clamp: Stainless steel
- ItemⒺ Flange screw: M2.5 Steel, Zinc plated
- ItemⒻ Bottom body: Thermoplastic (UL94V-0)

Electrical:

- Voltage rating: 300 V
- Current rating: 5.5 A
- Wire range:
- Solid wire(AWG): 16-24
- Stranded wire(AWG): 16-24
- Wire strip length: 9-10 mm
- Withstanding Voltage: 1.6 KV
- Operating temperature: -40°C to +115°C
- Safety Approval:

mat'l. code		surface ASME Y14.5	tolerance ASME Y14.5	projection	product family	
ltr ecn no dr date		tolerances unless otherwise specified			TERMINAL BLOCK	
		angles	X.±0.5	MM	title	
		X*±1°	X.X±0.3	scale	TERMINAL BLOCK	
		dr	EVIN ZHONG 052014		SPRING CLAMP, PLUGGABLE PLUG, WITH FLANGE	
		enr	EVIN ZHONG 052014		dwg no	sheet 1 of 1 size
		chr	HANKE FENG 052014		KDxx30x100J0G	A4
		appd	SHI JUN 052014		type	CUSTOMER Drawing
sheet index	revision sheet	A	1			