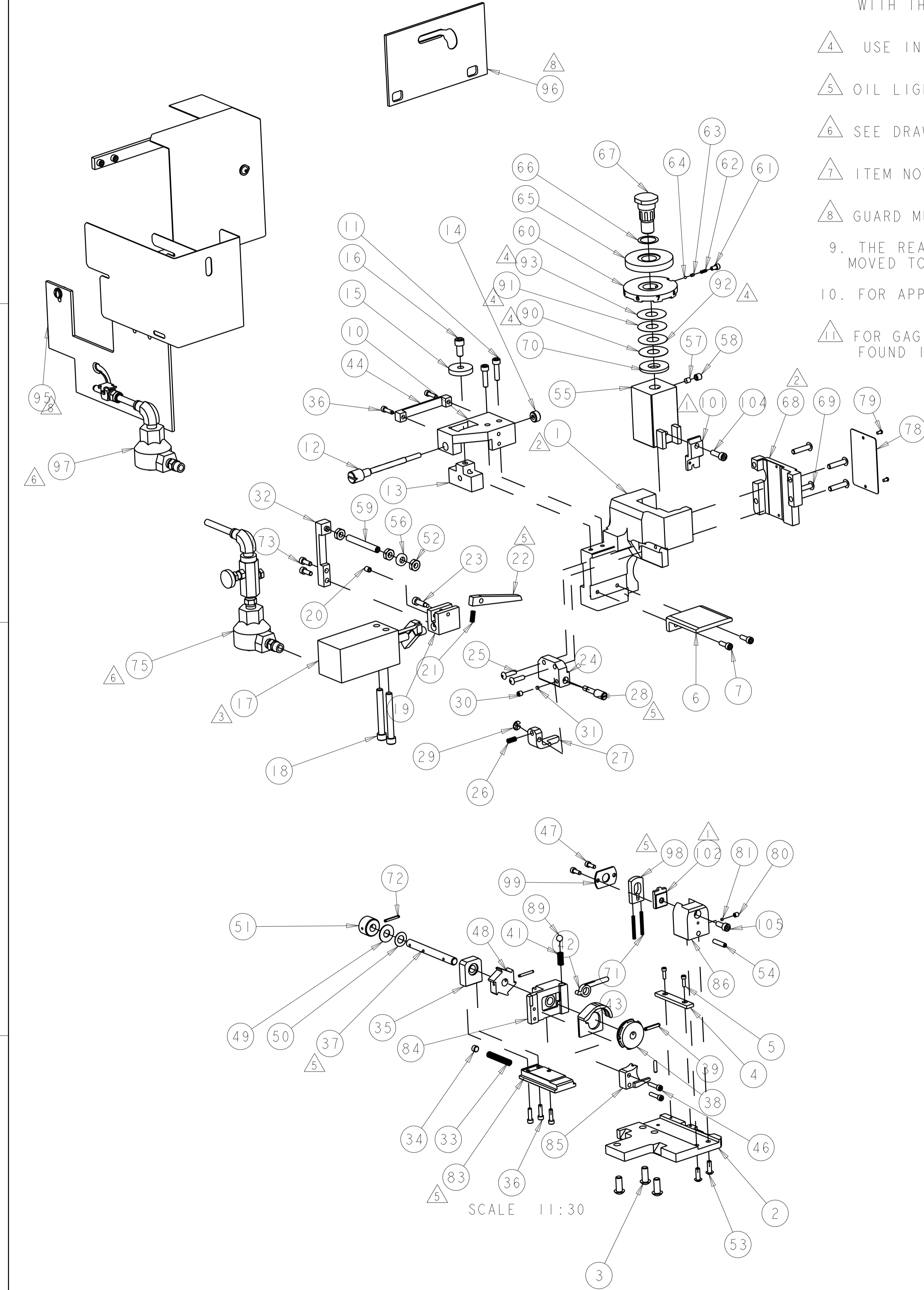


PART NUMBER	REV	FIRST USED	MACHINE	FEED
680643-2	F	565435-5	BENCH MODEL K	AIR FEED
680643-3	F	354500-1	BENCH MODEL G	AIR FEED



- 1 RECOMMENDED SPARE PARTS.
- 2 GREASE LIGHTLY.
- 3 ITEM 17, AIR CYLINDER, SHOULD BE ROTATED 90 DEG. WITH THE PORT UP FOR -3 ONLY.
- 4 USE IN COMBINATION TO ACHIEVE PROPER CRIMP HEIGHT.
- 5 OIL LIGHTLY.
- 6 SEE DRAWING FOR COMPONENTS.
- 7 ITEM NOT SHOWN ON ASSEMBLY.
- 8 GUARD MUST BE IN PLACE WHEN OPERATING APPLICATOR.
- 9. THE REAR HOLD-DOWN ON THE TERMINATING UNIT MUST BE MOVED TO THE FRONT OF THE BASE PLATE. FOR (-3) ONLY.
- 10. FOR APPLICATION TO INSULATION .080-.115 DIA. (UNSTRIPPED).
- 11 FOR GAGING OF THE CRIMPING CHAMBER, REFER TO DIE NUMBER 68166-1 FOUND IN FIGURE 11-2.

TERMINAL NAME, SPARE WIRE CAP
2-324485-1
APPL INSTRUCTION 408-8082 408-2254
LAYOUT L2086
APPL SPECIFICATION

LOC	DIST	REV	DATE	BY	CHK	APPV
A	66					

QTY	UNIT	DESCRIPTION	ITEM NO
1	1	DISC, INSULATION	60
1	1	SCR, SET, CUP POINT 1/4-20 X 2.000	59
1	1	SCR, SET, CUP POINT 1/4-20 X .250	58
1	1	PLUG, NYLON	57
1	1	MAGNET, RING	56
1	1	RAM	55
1	1	SCR, SET, CUP POINT 8-32 X .750	54
2	2	SCR, BTN SKT HD CAP 8-32 X .500	53
3	3	NUT, HEX, JAM .SS	52
1	1	KNOB, INDEX	51
1	1	WASHER, CURVED	50
1	1	RACE, THRUST BEARING	49
1	1	WHEEL, INDEX	48
2	2	SCR, SKT HD CAP 6-32 X .375	47
2	2	SCR, SKT HD CAP 6-32 X .625	46
1	1	GUIDE, BRACKET	44
1	1	DRAG, TAPE	43
1	1	LIFTER, DRAG	42
1	1	SPRING, COMPRESSION	41
1	1	PIN, SLOTTED SPRING .125 X .750	39
1	1	WHEEL, TAPE FEED	38
1	1	SHAFT, INDEX	37
5	5	SCR, SKT HD CAP 6-32 X .500	36
1	1	SUPPORT, BEARING	35
1	1	RETAINER, SPRING	34
1	1	SPRING, COMPRESSION	33
1	1	BRACKET, MAGNET	32
1	1	PLUG, NYLON	31
1	1	SCR, SET, CUP POINT 10-32 X .188	30
1	1	RING, RETAIN, EXTERN, 3/16 E-RING	29
1	1	SCREW, ADJ.	28
1	1	STRIPPER, UPPER	27
1	1	SPRING, COMPRESSION	26
2	2	SCR, BTN SKT HD CAP 8-32 X .625	25
1	1	MOUNT, STRIPPER	24
1	1	SCREW, SHLD, SOC HD SELF-LOCKING, PATCH TYPE	23
1	1	PAWL, INDEX	22
1	1	SPRING, COMPRESSION	21
1	1	SCR, SET, CUP POINT 10-32 X .250	20
1	1	CLEVIS, CYLINDER	19
2	2	SCR, SKT HD CAP 1/4-20 X 2.000	18
1	1	CYLINDER, AIR, 1" STROKE, S.A.	17
1	1	SCR, SKT HD CAP 1/4-20 X .500	16
1	1	CLAMP WASHER	15
1	1	COLLAR, SHAFT	14
1	1	FEED ADJUSTMENT BLOCK	13
1	1	FEED ADJUSTING SCREW, AIR FEED	12
2	2	SCR, SKT HD CAP 10-32 X .750	11
1	1	MOUNT, CYLINDER (CAST COMPLETE)	10
2	2	SCR, SKT HD CAP 8-32 X .500	7
1	1	GUIDE, TERMINAL	6
2	2	SCR, SKT HD CAP 4-40 X .375	5
1	1	RETAINER, SLIDE	4
3	3	SCR, BHSC, SELF-LOCKING, 1/4-20 X .625	3
1	1	PLATE, BASE	2
1	1	HOUSING	1

1	1	3-21000-5	SCR, SKT HD CAP 10-32 X .500	105
1	1	3-21000-6	SCR, SKT HD CAP 10-32 X .625	104
1	1	307924-2	ANVIL	102
1	1	307923-2	INDENTER	101
1	1	356253-1	PLATE, RETAINER	99
1	1	356252-1	STRIPPER, LOWER	98
1	1	692655-7	AIR FEED VALVE ASSEMBLY	97
1	1	318708-1	CLEAR POLYCARBONATE	96
1	1	1-462992-5	GUARD, ASSY, SIDE FEED DUAL	95
1	1	854061-2	DOCUMENTATION PACKAGE	94
1	1	469367-4	SHIM	93
1	1	469367-3	SHIM	92
1	1	469367-2	SHIM	91
1	1	469367-1	SHIM	90
1	1	23241-3	BALL, STEEL	89
1	1	356250-4	HOLDER, LOWER TOOL	86
1	1	820840-1	GUIDE, TAPE	85
1	1	820839-1	HOUSING, TAPE DRAG	84
1	1	820838-1	SLIDE, RETRACT	83
1	1	690191-5	PLUG, NYLON	81
1	1	3-21006-9	SCR, SET, CUP POINT 8-32 X .188	80
2	2	21017-2	SCREW, DRIVE	79
1	1	461264-1	PLATE, IDENTIFICATION	78
1	1	692655-5	AIR FEED VALVE ASSEMBLY	75
2	2	9-21000-9	SCR, SKT HD CAP 8-32 X .438	73
2	2	4-21028-0	PIN, SLOTTED SPRING .094 X .750	72
2	2	4-22278-6	SPRING, COMPRESSION	71
1	1	690124-3	WASHER, RAM (.110)	70
4	4	3-21002-0	SCR, BTN SKT HD CAP 10-32 X .875	69
1	1	454220-7	CAP, RAM	68
1	1	690212-1	POST, RAM	67
1	1	22480-5	WASHER, WAVE SPRING	66
1	1	459663-5	DISC, WIRE CRIMP	65
1	1	23241-6	BALL, STEEL	64
1	1	690603-1	SPRING ASSIST AMP-O-MATOR APPLICATOR	63
1	1	690170-1	SPRING, COMPRESSION	62
1	1	1-21000-8	SCR, SKT HD CAP 6-32 X .250	61

DIMENSIONS: IN 0 PLC ±.01 1 PLC ±.02 2 PLC ±.03 3 PLC ±.04 4 PLC ±.05 ANGLES ±.0005	TOLERANCES UNLESS OTHERWISE SPECIFIED: ±.01 ±.02 ±.03 ±.04 ±.05 ±.0005	DWN: STAKEM 18JAN2007 CHK: T. ELBIN 18JAN2007 APVD: T. ELBIN 18JAN2007	TE Connectivity Harrisburg, PA 17105-3608
DIMENSIONING AND TOLERANCING PER ASME Y14.5M-2009		NAME: TAPE FEED HDM APPLICATOR	
MATERIAL:		SIZE: CAGE CODE: DRAWING NO: A100779C=680643	
FINISH:		WEIGHT:	
RESTRICTED TO:		SCALE: 2:5 SHEET 1 OF 1 REV F	