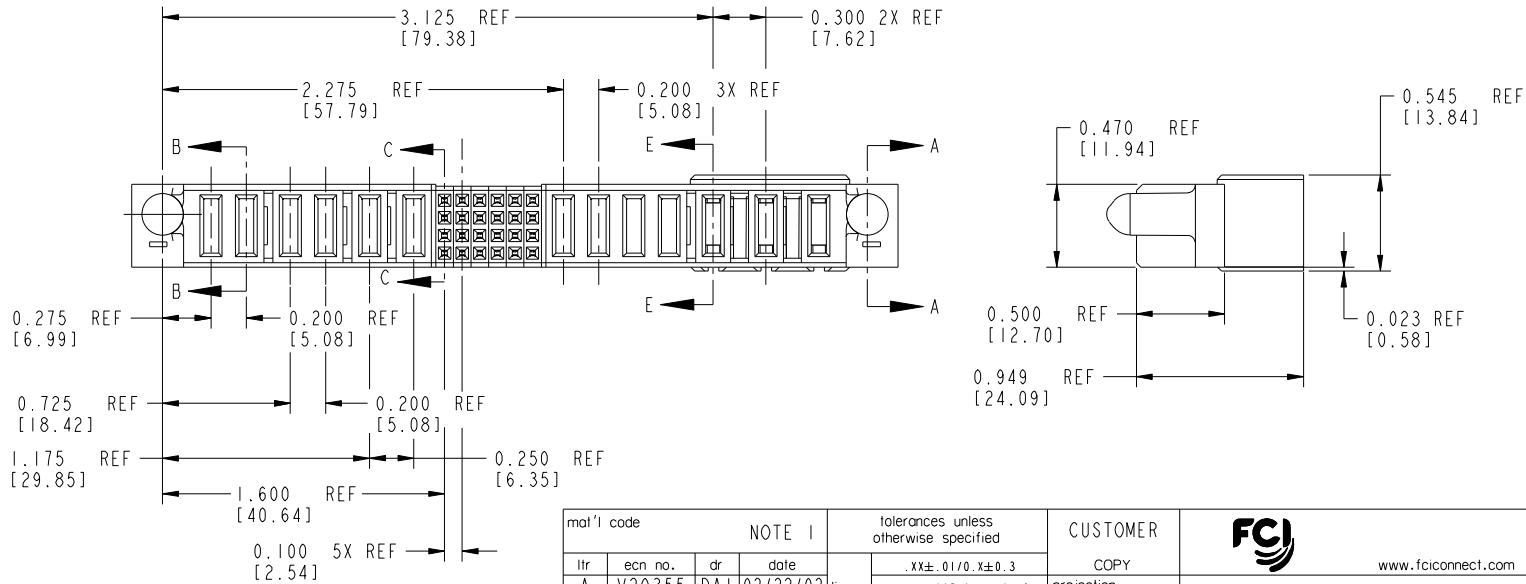
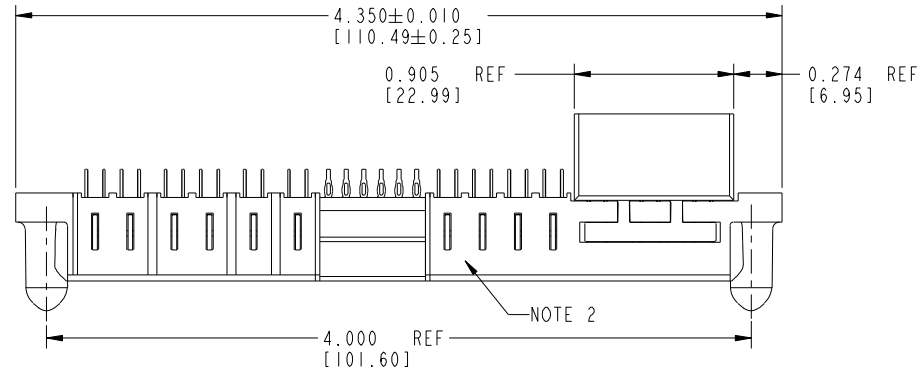


Tous droits strictement réservés. Reproduction ou communication à des tiers interdite sous quelque forme que ce soit sans autorisation écrite du propriétaire. Propriété de c FCI. Droits de reproduction FCI.



All rights strictly reserved. Reproduction or issue to third parties in any form whatever is not permitted without written authority from the proprietor. Property of FCI. Copyright FCI.

PRODUCT NUMBER  
51955-001--  
NOTE: ③



mat'l code				NOTE 1		tolerances unless otherwise specified		CUSTOMER	
ltr	ecn no.	dr	date	linear	.XX±.01/0.X±0.3	COPY		FCI www.fciconnect.com	
A	V20355	DAI	02/22/02		.XXX±.005/0.XX±0.13	projection		title 3ACP + 4P + 24S + 6P VERTICAL P/F RECEPT SPECIAL CABLE	
B	V21459	TAB	09/13/02	angles	.XXX±.0020/.XX±.051	INCH/MM		product family PwrBlade code 213	
C	V21648	CGD	10/22/02		0°±2°	scale 1:1		size dwg no 51955-001 sheet 1 of 4	
D	DG05-0146	GuoJM	06/07/05	dr	E. TREECE 10/18/01				
E	DG06-0392	LJCEN	09/18/06	enr	E. TREECE 10/18/01				
F	DG07-0094	JMG	03/20/07	chr	E. TREECE 10/18/01				
				appd	E. TREECE 10/18/01				
sheet index	revision sheet	F 1	F 2	F 3	F 4				

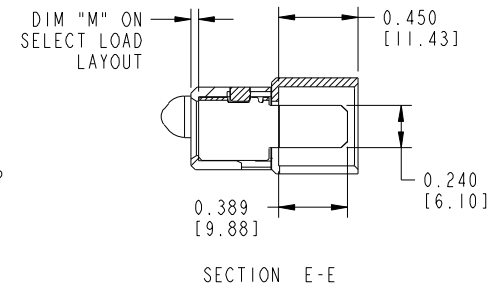
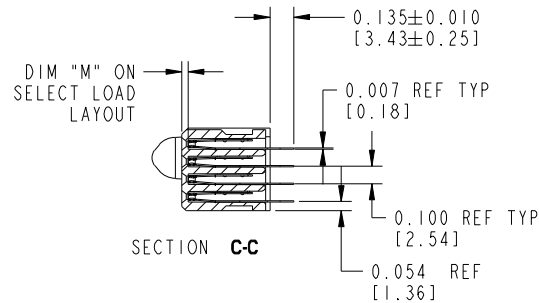
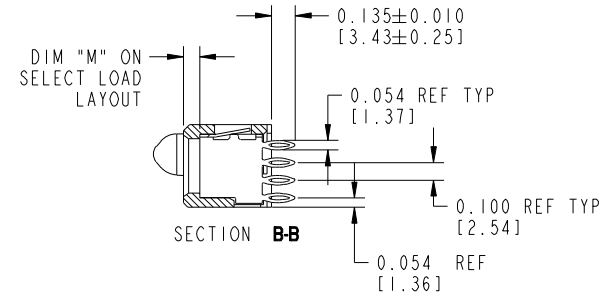
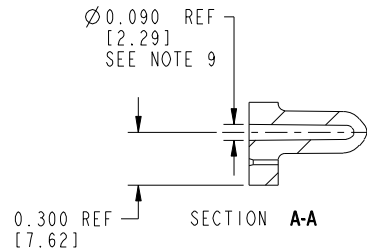
cage code 22526

Pro/E

Tous droits strictement reserves. Reproduction ou communication a des tiers interdite sous quelque forme que ce soit sans autorisation écrite du propriétaire. Propriete de c FCI. Droits de reproduction FCI.

All rights strictly reserved. Reproduction or issue to third parties in any form whatever is not permitted without written authority from the proprietor. Property of FCI. Copyright FCI.

PRODUCT No.	ROWS	E2	P13	P12	P11	P10	P9	P8	6	5	4	3	2	1	P7	P6	P5	P4	P3	P2	P1	E1
51955-001 NOTE ③	D C B A		PF	PF	PF	PF	PF	PF	F	F	F	F	F	F	PF	PF	PF	PF	PG	PH	PH	



CODE	DIM "M"	CONTACT TYPE
F	N/A [N/A]	SIGNAL
PF	0.092 [2.34]	POWER
PG	0.042 [1.07]	POWER
PH	0.092 [2.34]	POWER

mal't code		NOTE 1		tolerances unless otherwise specified		CUSTOMER			
ltr	ecn no.	dr	date	linear	.XX±.01/0.X±0.3	COPY		www.fciconnect.com	
F				projection	.XXX±.005/0.XX±0.13	projection		title	
				angles	.XXX±.0020/.XX±.051			3ACP + 4P + 24S + 6P VERTICAL P/F RECEPT SPECIAL CABLE	
				dr	0°±2°			product family	
				enr	E. TREECE 10/18/01	scale		PwrBlade	
				chr	E. TREECE 10/18/01	1:1		code	
				appd	E. TREECE 10/18/01	A		213	
sheet index		revision sheet						size	
								dwg no	
								51955-001	
								sheet	
								2	

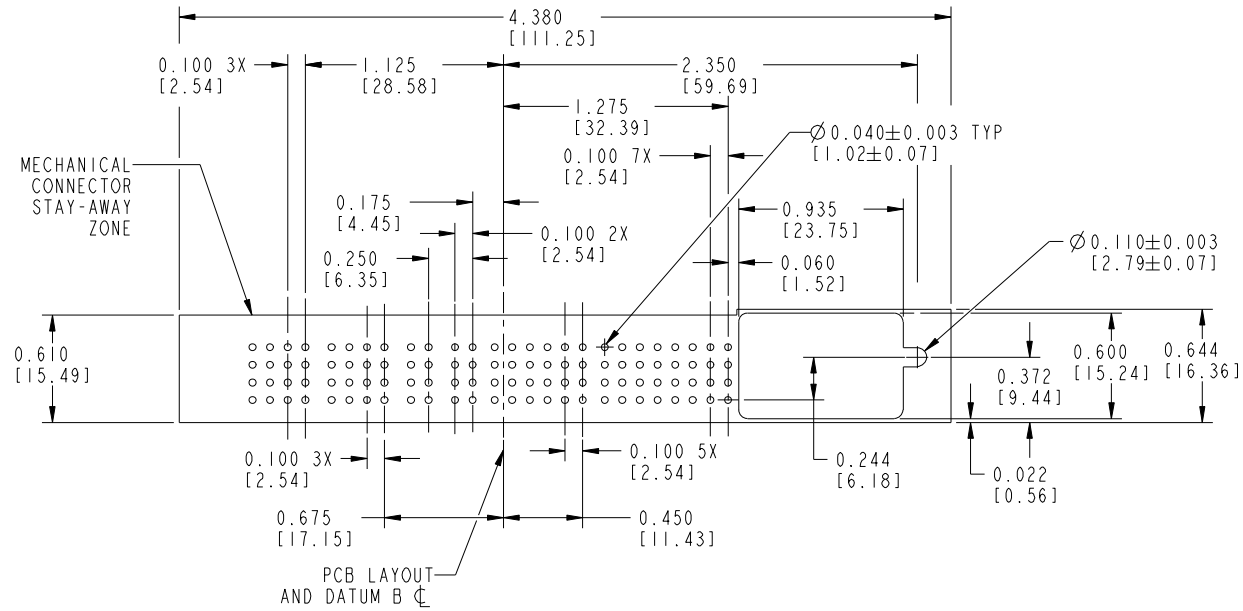
cage code 22526

Tous droits strictement réservés. Reproduction ou communication à des tiers interdite sous quelque forme que ce soit sans autorisation écrite du propriétaire. Propriété de c.FCI. Droits de reproduction FCI.



All rights strictly reserved. Reproduction or issue to third parties in any form whatever is not permitted without written authority from the proprietor. Property of FCI. Copyright FCI.

PRODUCT NUMBER  
51955-001--  
NOTE: ③



RECOMMENDED PCB LAYOUT

mat'l code		NOTE 1		tolerances unless otherwise specified		CUSTOMER		FCI	
ltr	ecn no.	dr	date	linear	.XX±.01/0.X±0.3	COPY		www.fciconnect.com	
F				angles	.XXX±.005/0.XX±0.13	projection		title	
				dr	.XXX±.0020/.XX±.051	INCH/MM		3ACP + 4P + 24S + 6P	
				enr	0°±2°	scale		VERTICAL P/F RECEIPT SPECIAL CABLE	
				chr	E. TREECE 10/18/01	1:1		product family PwrBlade code	
				appd	E. TREECE 10/18/01	A		size 213	
sheet index	revision sheet							dwg no 51955-001 sheet 3	

cage code 22526

Pro/E



All rights strictly reserved. Reproduction or issue to third parties in any form whatsoever is not permitted without written authority from the proprietor. Property of FCI. Copyright FCI.

Tous droits strictement reserves. Reproduction ou communication a des tiers interdicte sous quelque forme que ce soit sans autorisation ecrite du proprietaire. Propriete de c FCI. Droits de reproduction FCI.

PRODUCT NUMBER  
51955-001--  
NOTE: (3)

CONNECTOR NOTES:

- HOUSING MATERIAL: UL 94 V-0 GLASS FILLED HIGH TEMP THERMOPLASTIC  
POWER CONTACT MATERIAL: COPPER ALLOY  
SIGNAL CONTACT MATERIAL: COPPER ALLOY
- "MANUFACTURER" NAME, P/N, AND DATE CODE TO APPEAR ON THIS SURFACE
- 51955-001; 51955-001LF; PLATING SPEC. SEE PRINT: 10064183
- PRODUCT SPECIFICATION GS-12-149

PCB NOTES:

- ALL DIMENSIONS ARE BASIC UNLESS OTHERWISE SPECIFIED.
- ALL THROUGH HOLES ARE LOCATED WITH A TRUE POSITION OF 0.004 [0.10]
- ALL HOLE DIAMETERS ARE FINISHED HOLE SIZE
- $\varnothing .126 [3.20]$  THROUGH HOLES ARE UNPLATED.
- $\varnothing 0.0453 \pm 0.0010 [1.151 \pm 0.025]$  DRILLED HOLES PLATED WITH 0.0003 [0.008] MIN SnPb OR Sn OVER 0.001 [0.03] TO 0.003 [0.08] Cu PLATING TO ACHIEVE A  $\varnothing 0.040 \pm 0.003 [1.02 \pm 0.07]$  HOLE.
- RECOMMENDED RETENTION TO PCB  
 $\varnothing .110 [2.79]$  THRU HOLE FOR M2.5 SOCKET HEAD CAP SCREW  
MAX. HEAD  $\varnothing 4.5 \text{mm} [.177]$  RECOMMENDED SCREW LENGTH 12mm [.472] + PCB THICKNESS.  
RECOMMENDED SCREW SEATING TO PCB TORQUE: 2-5 lbf-in (2300-5760 gf-cm).

mat'l code		NOTE 1		tolerances unless otherwise specified		CUSTOMER		www.fciconnect.com			
ltr	ecn no.	dr	date	linear	.XX±.01/0.X±0.3	COPY			title 3ACP + 4P + 24S + 6P VERTICAL P/F RECEPT SPECIAL CABLE		
F					.XXX±.005/0.XX±0.13					product family	PwrBlade
				angles	.XXX±.0020/.XX±.051	scale		size	dwg no	sheet	4
				dr	0°±2°	1:1		A	51955-001		
				enr	E. TREECE 10/18/01						
				chr	E. TREECE 10/18/01						
				appd	E. TREECE 10/18/01						
sheet index	revision sheet										

cage code 22526

Pro/E