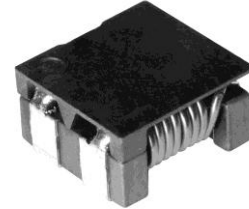
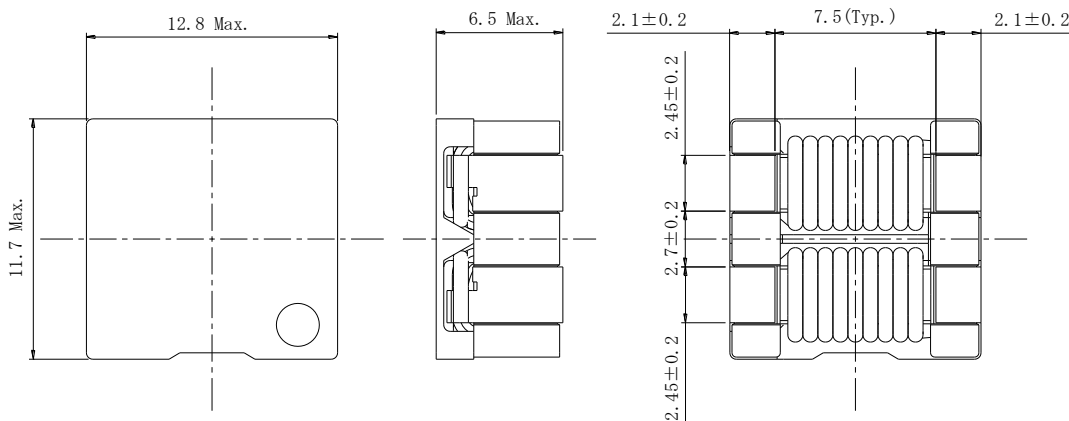
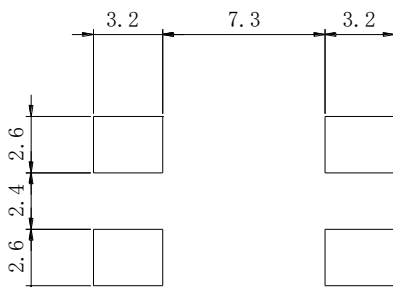
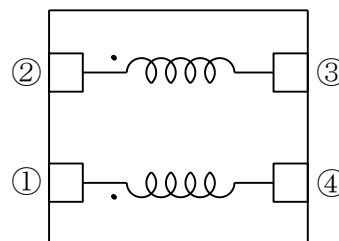


**Type: CPFC11D60**
**◆ Product Description**

- Size: 12.8×11.7mm Max.(L×W), 6.5mm Max. Height .
- Insulated withstand voltage: DC 100V
- Custom design is available.


**◆ Feature**

- For medical machines and automotive related applications.
- Of high reliabilities.
- RoHS Compliance

**◆ Dimensions (mm)**

**◆ Land Pattern (mm)**

**◆ Schematics (Bottom)**

**◆ Specification**

Part Name.	Stamp	Impedance (1,2-3,4) 100MHz	D.C.R (1-4) and (2-3)	Rated Current (1-2) ※1 (3-4)short
CPFC11D60-100M08	122	800Ω Min	8.0mΩ Max.	6.0A

※1. Rated Current: The DC current at which the temperature rise is  $\Delta t = 40^{\circ}\text{C}$ . ( $T_a = 20^{\circ}\text{C}$ )

**Type: CPFC11D60**

**Impedance Characteristics / インピーダンス特性**

