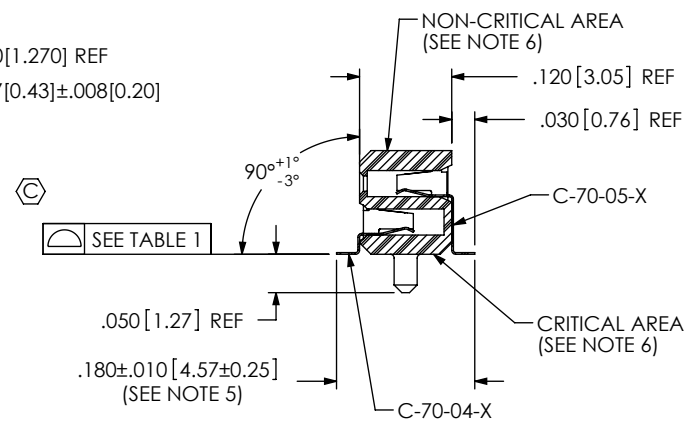
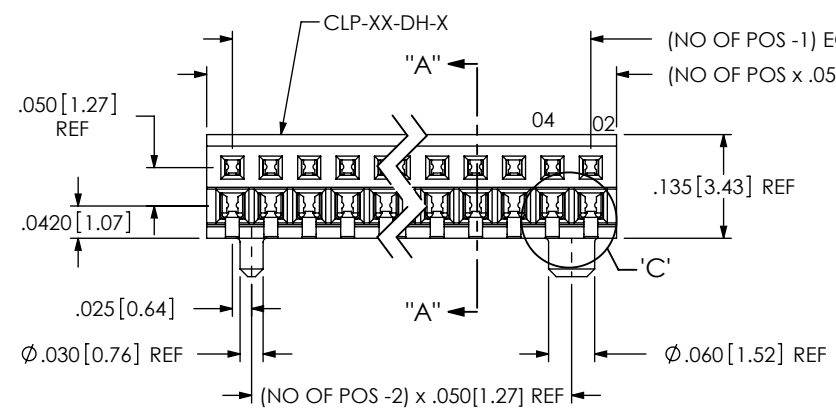
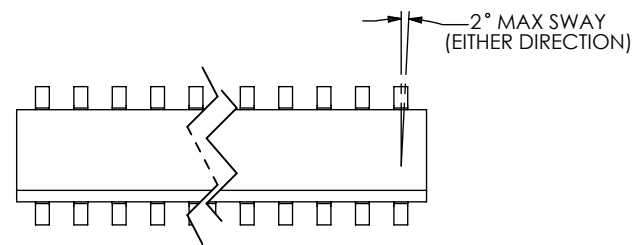
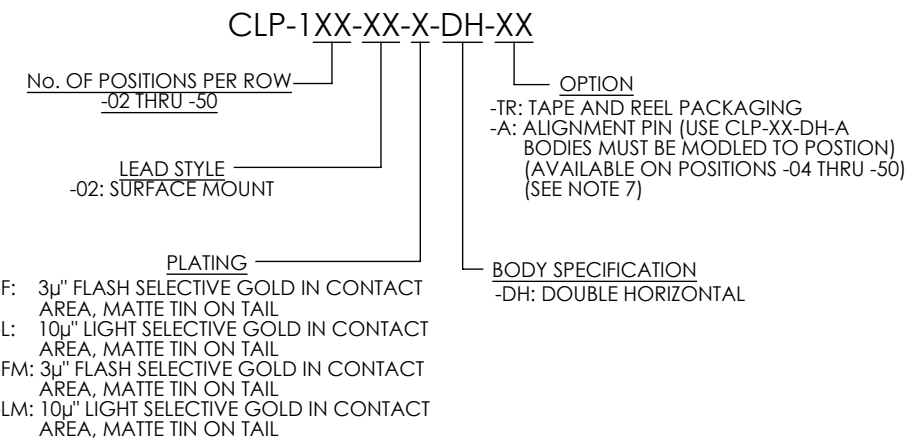


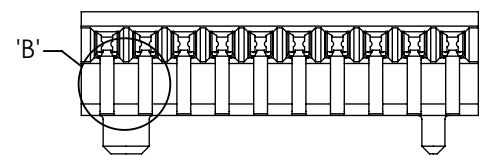
NOTES:

1.  $\text{\textcircled{C}}$  REPRESENTS A CRITICAL DIMENSION.
2. ALL DIMENSION TO BE SYMMETRICAL ABOUT CENTERLINE WITHIN  $\pm 0.002[.05]$  UNLESS OTHERWISE STATED.
3. POSITIONS -05 THRU -50 ARE TO BE PACKAGED IN TUBES.
4. MIN CONTACT RETENTION FORCE: 1LB.
5. TAILS TO ARE TO BE SHEARED. MAX BURR, ORIENTED AWAY FROM CUSTOMER'S P.C.B. ONLY, TO BE  $.0045[.114]$ .
6. MAX CUT FLASH:  $.015$  IN NON-CRITICAL AREAS; NO CUT FLASH TO BE PRESENT IN CRITICAL AREAS AS SHOWN
7. MOLD STEEL CAPABLE OF -02 & -03 POSITION (-A OPTION), BUT NOT ENG'G APPROVED.
8. FIRST AND LAST PIN OF EACH ROW TO BE FLUSH TO  $.003[0.08]$  BELOW BODY.

DO NOT SCALE FROM THIS PRINT

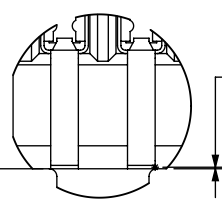


SECTION "A"- "A"

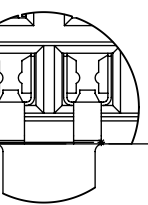
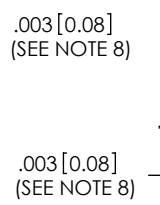


BACK VIEW

POSITION	COPLANARITY	STRAIGHTNESS
-02 THRU -40	$.004[0.10]$	$.004[0.10]$
-41 THRU -50	$.006[0.15]$	$.006[0.15]$



DETAIL 'B' SCALE 8:1



DETAIL 'C' SCALE 8:1

UNLESS OTHERWISE SPECIFIED, DIMENSIONS ARE IN INCHES. TOLERANCES ARE:

DECIMALS ANGLES

.XX:  $\pm .01$  [3] 2°

.XXX:  $\pm .005$  [.13]

.XXXX:  $\pm .0020$  [.051]

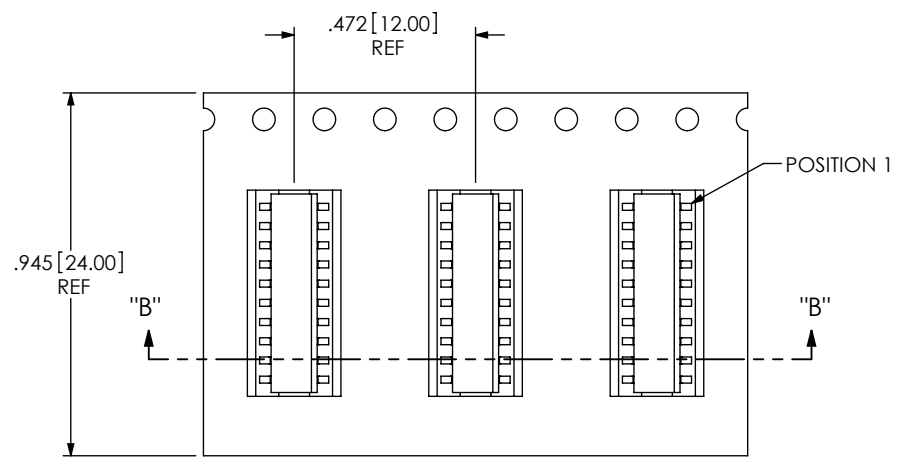
PROPRIETARY NOTE

THIS DOCUMENT CONTAINS INFORMATION CONFIDENTIAL AND PROPRIETARY TO SAMTEC, INC. AND SHALL NOT BE REPRODUCED OR TRANSFERRED TO OTHER DOCUMENTS OR DISCLOSED TO OTHERS OR USED FOR ANY PURPOSE OTHER THAN THAT WHICH IT WAS OBTAINED WITHOUT THE EXPRESSED WRITTEN CONSENT OF SAMTEC, INC.

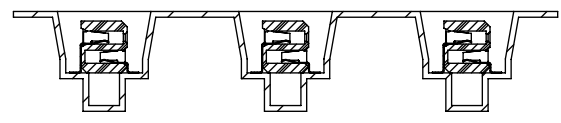
520 PARK EAST BLVD, NEW ALBANY, IN 47150  
PHONE: 812-944-6733 FAX: 812-948-5047  
e-Mail: info@SAMTEC.com code 53322

MATERIAL: DO NOT SCALE DRAWING SHEET SCALE: 4:1  
INSULATOR: LCP, UL 94 VO, COLOR: BLACK  
CONTACT: PHOS BRONZE

DESCRIPTION: LOW PROFILE .050 X .050 DOUBLE ROW ASM  
DWG. NO. CLP-1XX-XX-X-DH-XX

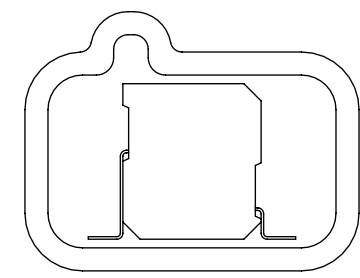


← USER DIRECTION OF UNREELING

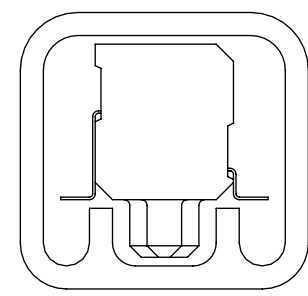


-TR: TAPE & REEL VIEW  
(SCALE 2:1)

PACKAGING TUBE VIEW  
(SCALE 6:1)



-DH NO OPTION  
PT-1-24-02-37  
(TUBE USES (2) TP-12)



WITH -A OPTION  
PT-1-24-01-62  
(TUBE USES (2) TP-12)

**PROPRIETARY NOTE**

THIS DOCUMENT CONTAINS INFORMATION CONFIDENTIAL AND PROPRIETARY TO SAMTEC, INC. AND SHALL NOT BE REPRODUCED OR TRANSFERRED TO OTHER DOCUMENTS OR DISCLOSED TO OTHERS OR USED FOR ANY PURPOSE OTHER THAN THAT WHICH IT WAS OBTAINED WITHOUT THE EXPRESSED WRITTEN CONSENT OF SAMTEC, INC.



520 PARK EAST BLVD, NEW ALBANY, IN 47150  
PHONE: 812-944-6733 FAX: 812-948-5047  
e-Mail info@SAMTEC.com code 55322

SHEET SCALE: 4:1

DESCRIPTION:  
LOW PROFILE .050 X .050 DOUBLE ROW ASM

DWG. NO. CLP-1XX-XX-X-DH-XX

BY: PURVIS 11-29-1995 SHEET 2 OF 2