

APPLICATOR STYLE CONVERSION CHART table with columns: PART NUMBER, REVISION, DESCRIPTION, FEED TYPE, CONVERT TO, PART NUMBERS REQUIRED.

APPLICATOR DATA table with columns: CRIMP, SIZE, TYPE, WIRE, INSUL, APPL INSTRUCTIONS.

Terminal data and specification for TE terminal FASTON CONNECTOR, .187 SERIES REC.

Terminal data and specification for TE terminal FASTON CONNECTOR, .187 SERIES REC (continued).

WIRE SIZE, CRIMP HEIGHT, and CRIMP HEIGHT REFERENCE SETTING table (continued).

WIRE SIZE, CRIMP HEIGHT, and CRIMP HEIGHT REFERENCE SETTING table (continued).

- RECOMMENDED SPARE PARTS
GREASE BEARING SURFACES LIGHTLY
LUBRICATE DAILY PER THE APPLICATOR INSTRUCTION SHEET SUPPLIED WITH THE APPLICATOR.
APPLICATOR SPECIFIC DATA TO BE ENTERED INTO BLANK MEMORY CHIP AT ASSEMBLY...

Terminal data and specification for TE terminal FASTON CONNECTOR, .187 SERIES REC (continued).

WIRE SIZE, CRIMP HEIGHT, and CRIMP HEIGHT REFERENCE SETTING table (continued).

Terminal data and specification for TE terminal FASTON CONNECTOR, .187 SERIES REC (continued).

WIRE SIZE, CRIMP HEIGHT, and CRIMP HEIGHT REFERENCE SETTING table (continued).

*WARNING ON INSTALLATION, SET WIRE DISC, ITEM 40 TO LARGEST WIRE SIZE SETTING. USE OF SETTINGS BELOW MINIMUM REQUIRED CRIMP HEIGHT SETTING WILL CAUSE DAMAGE TO CRIMP TOOLING. PART NO. DESCRIPTION ITEM NO.

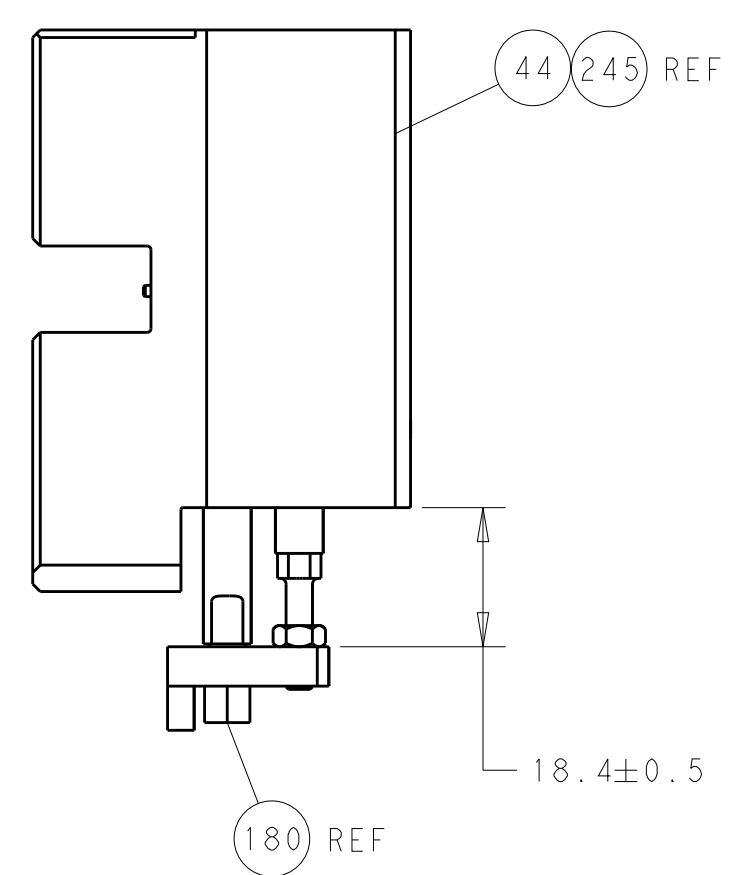
ATLANTIC VERSION
Shown on sheets 1 of 4 & 2 of 4
(Pacific version shown on sheets 3 of 4 & 4 of 4)

SET UP GAUGE, LOC, DIST, REVISIONS table with columns: P, LTR, DESCRIPTION, DATE, DWN, APVD.

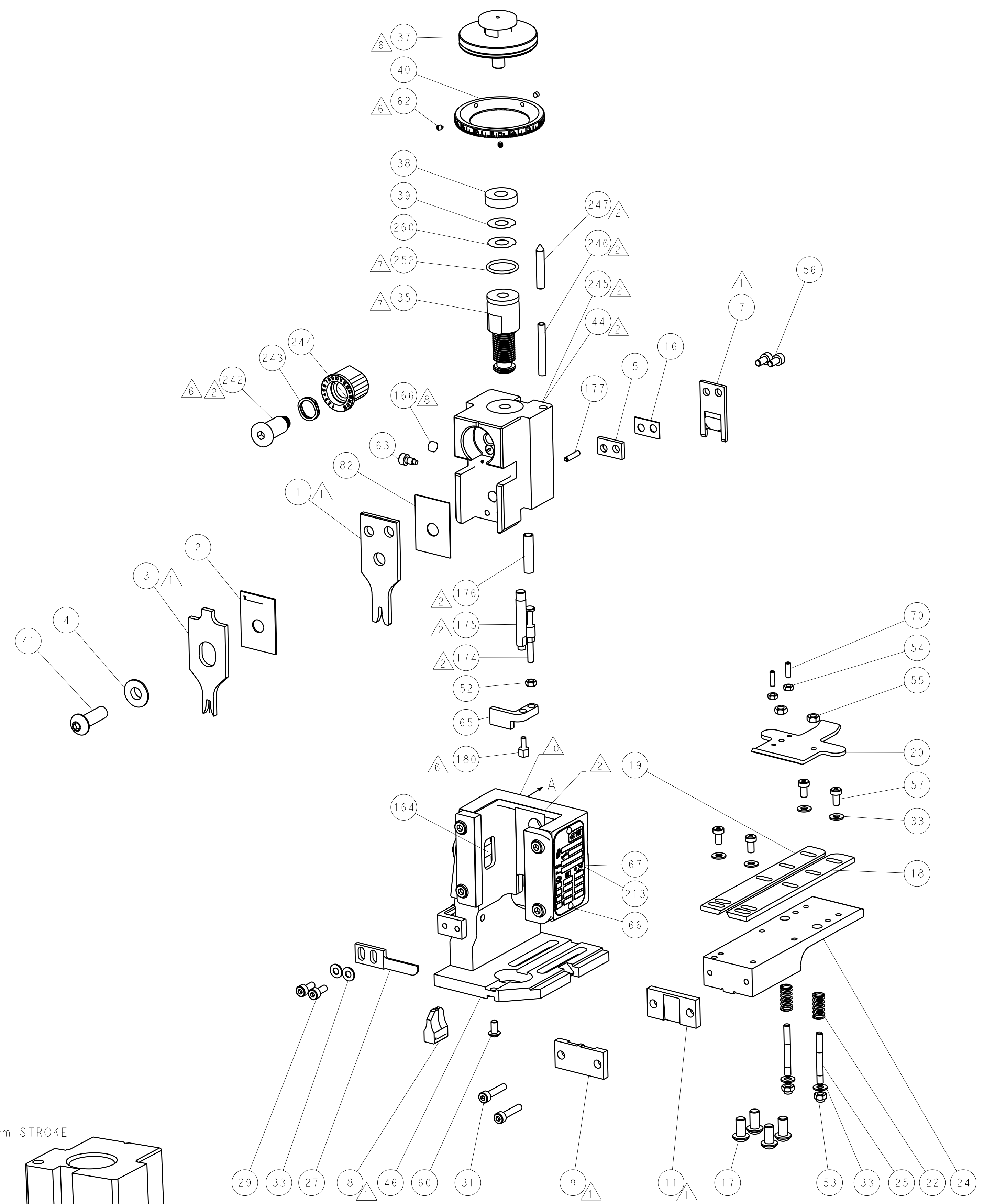
Main parts list table with columns: P, LTR, DESCRIPTION, DATE, DWN, APVD. Includes parts like SPRING, COMPRESSION, RAM, AMP STYLE, END FEED...

TE Connectivity logo and product information: Ocean End Feed Applicator, Part No. 2150081, Scale 1:1, Sheet 1 of 4.

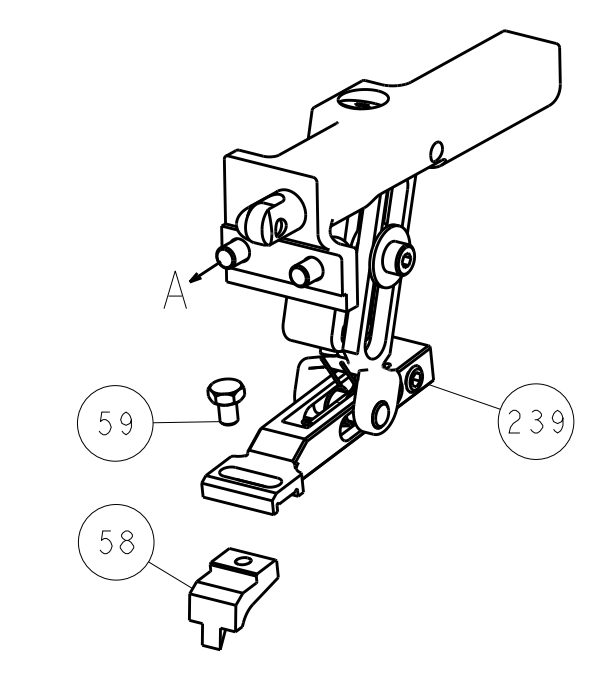
LOC		DIST		REVISIONS			
A	66	P	LTM	DESCRIPTION	DATE	OWN	APVD
		-	-	SEE SHEET 1			



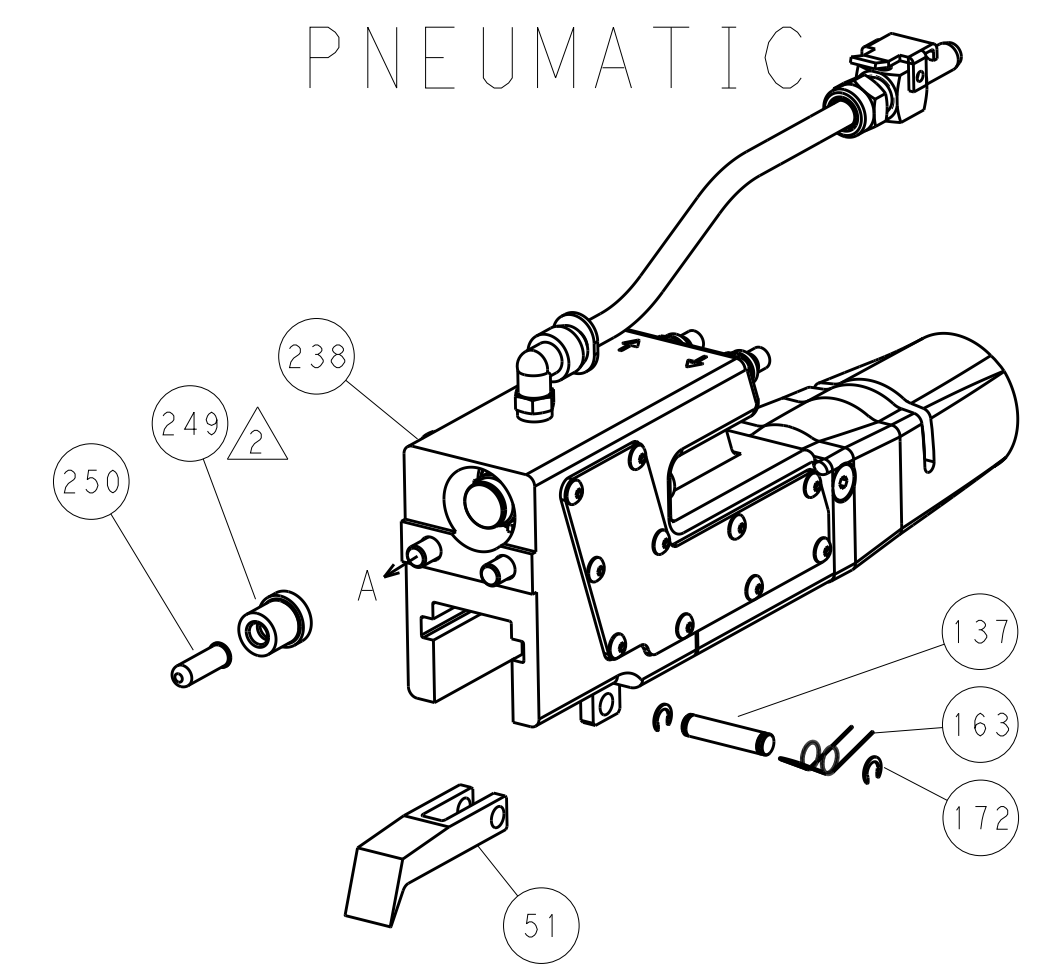
HOLDDOWN SET-UP



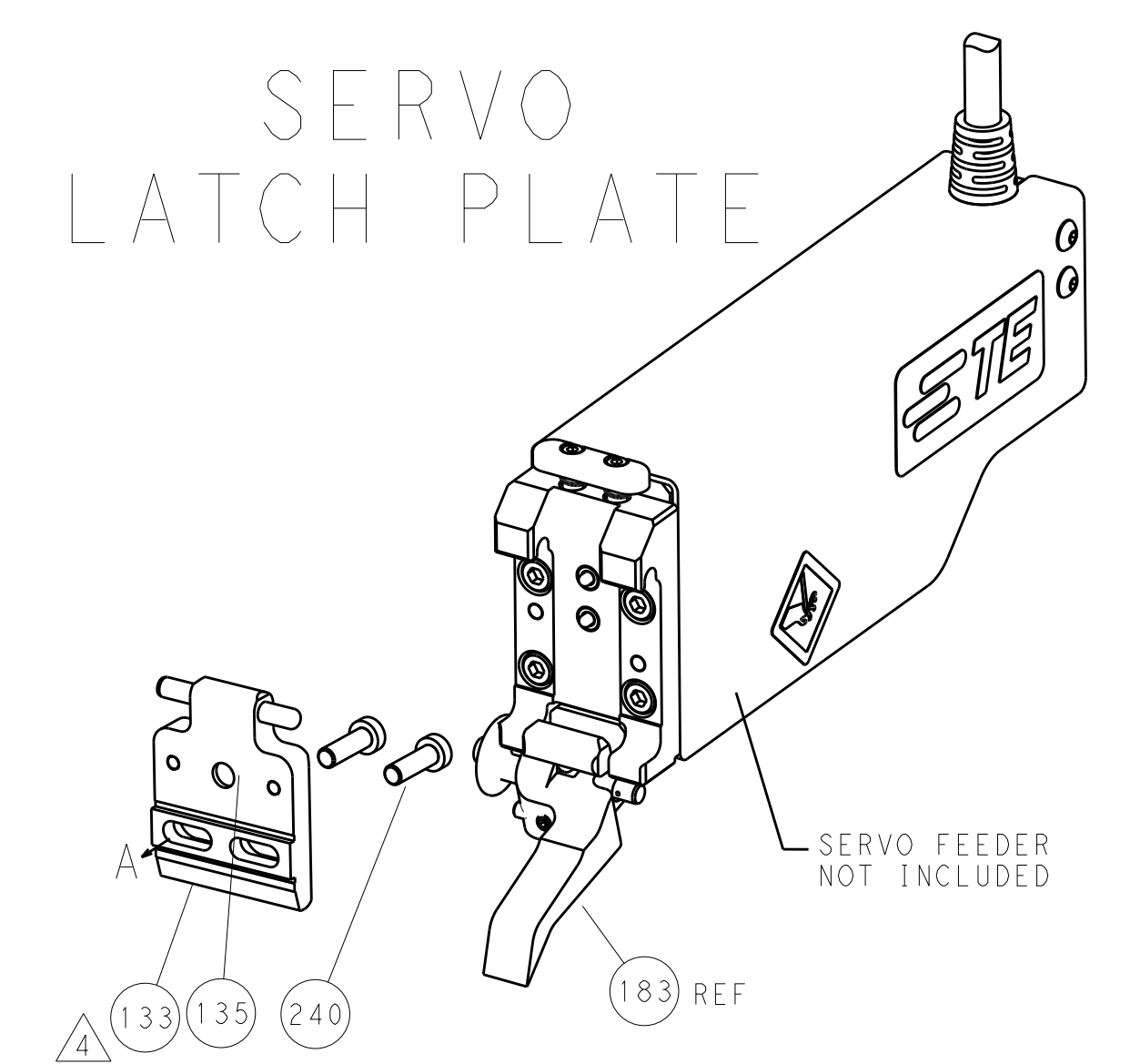
FEED TYPE
MECHANICAL



PNEUMATIC



SERVO
LATCH PLATE



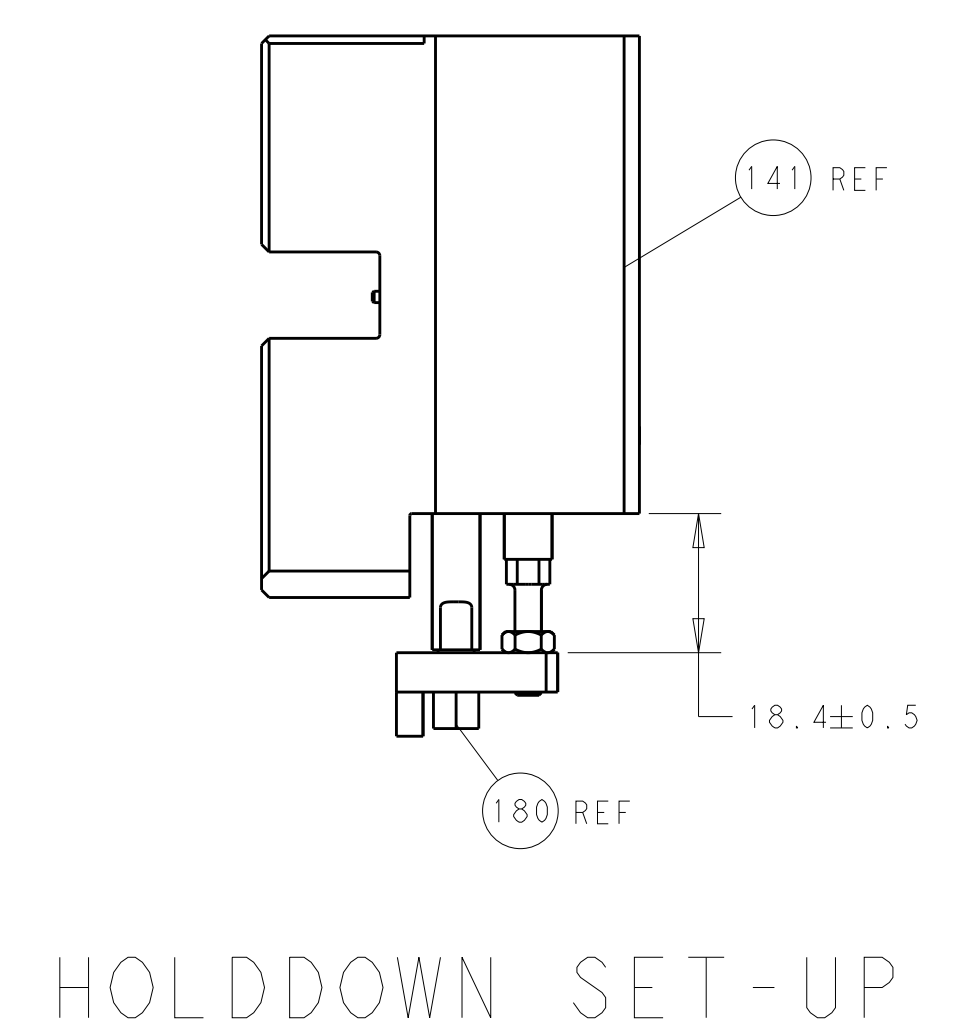
CAM POSITIONS



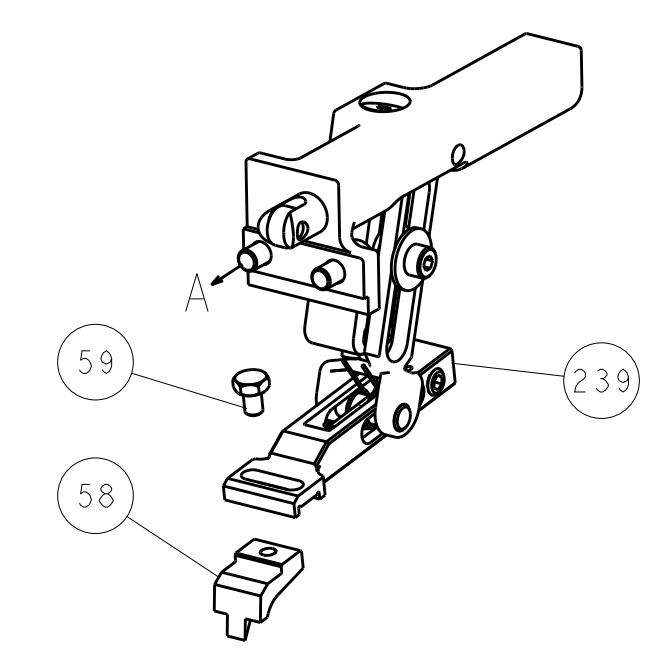
ATLANTIC VERSION
 Shown on sheets 1 of 4 & 2 of 4
 (Pacific version shown on sheets 3 of 4 & 4 of 4)

DIMENSIONS:		TOLERANCES UNLESS OTHERWISE SPECIFIED:		OWN: L. ZHANG 07FEB2012		TE Connectivity	
mm	0 PLC	±		CHK: L. ZHANG 07FEB2012	NAME: Ocean End Feed Applicator		TE Connectivity Harrisburg, PA 17105-3608
	1 PLC	±		APVD: S. XI 07FEB2012	RESTRICTED TO:		
	2 PLC	±		PRODUCT SPEC			
	3 PLC	±		APPLICATION SPEC			
	4 PLC	±		WEIGHT		SIZE: CAGE CODE: DRAWING NO: A11 00779 ©=2150081	
	ANGLES	±		FINISH		CUSTOMER ACCESSIBLE PRODUCTION DRAWING	SCALE: 1:1 SHEET 2 OF 4 REV B3

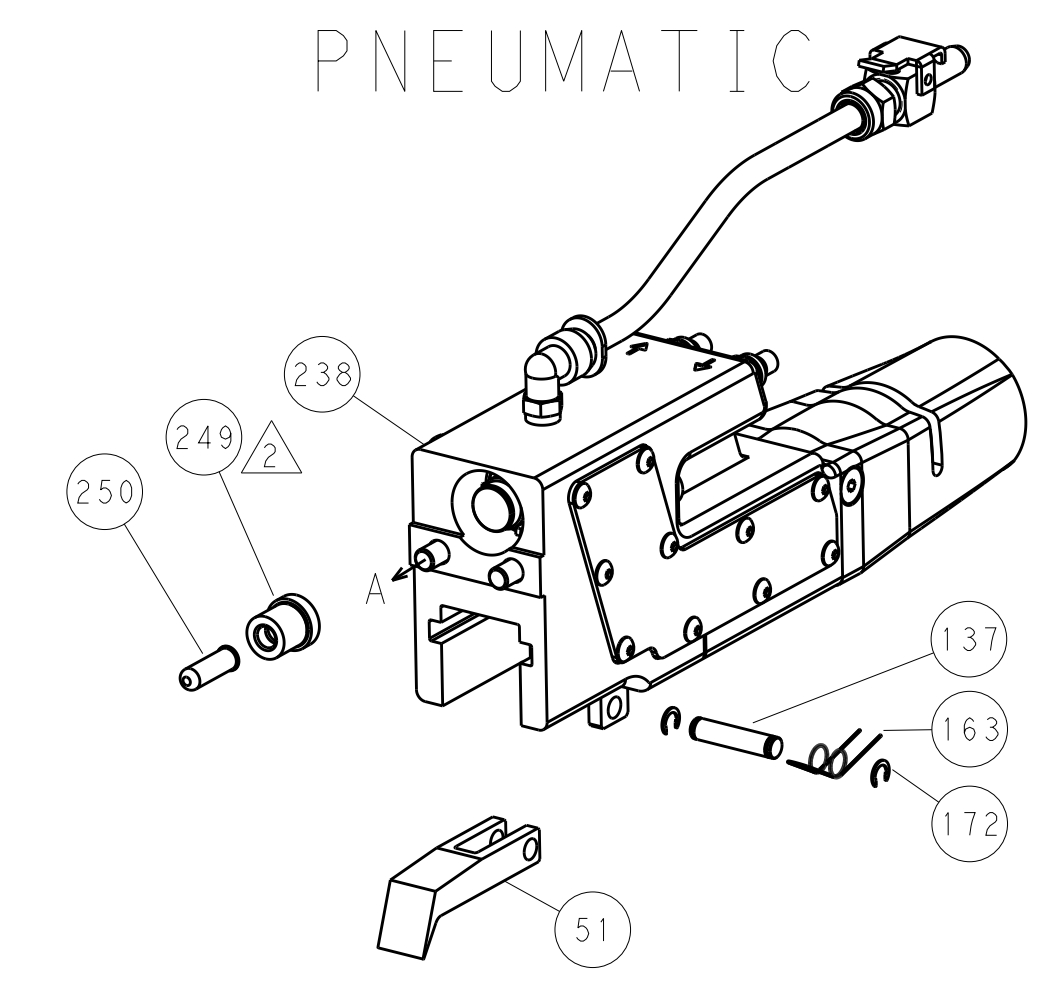
LOC		DIST		REVISIONS			
A	66	P	LTM	DESCRIPTION	DATE	OWN	APVD
				SEE SHEET 1			



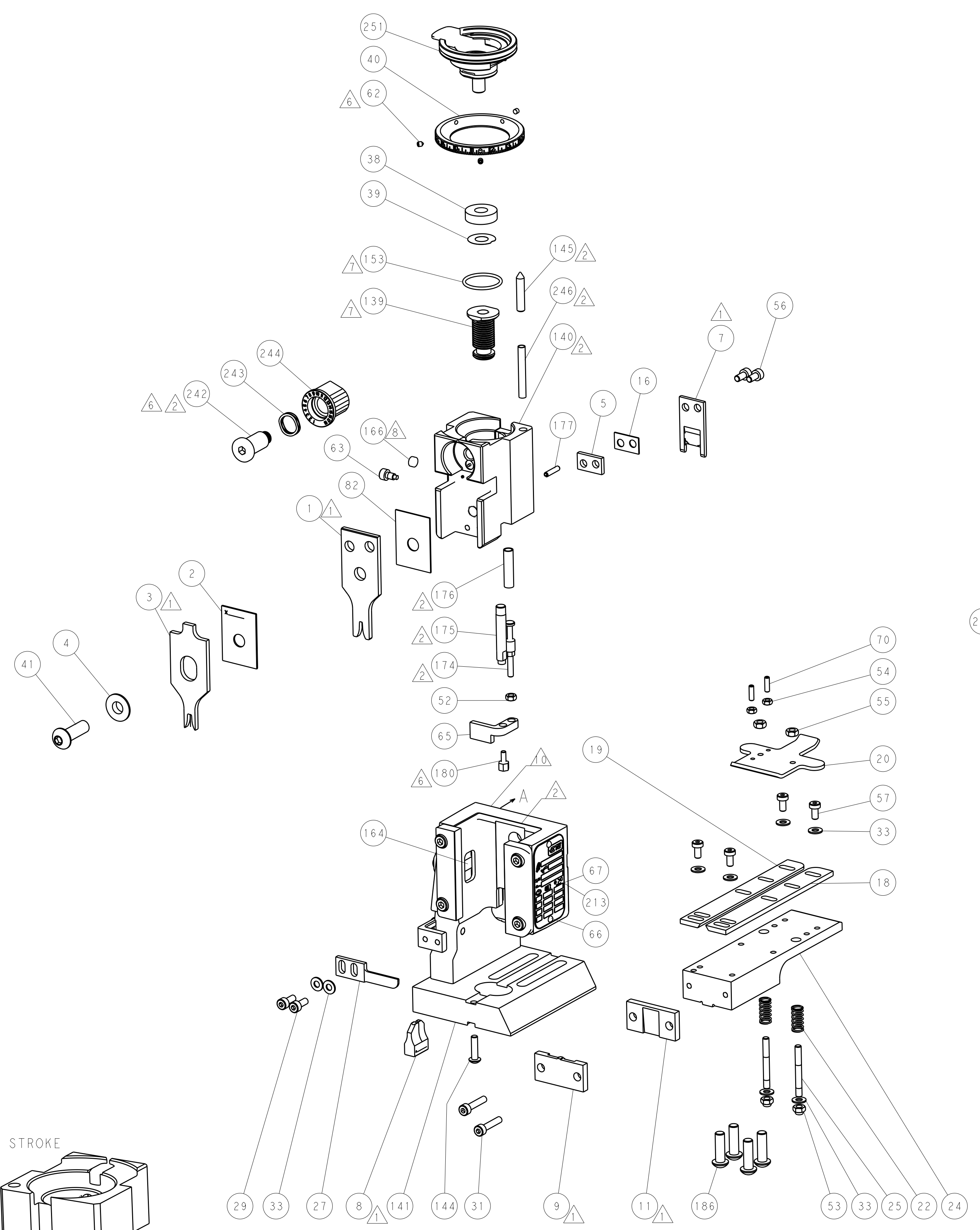
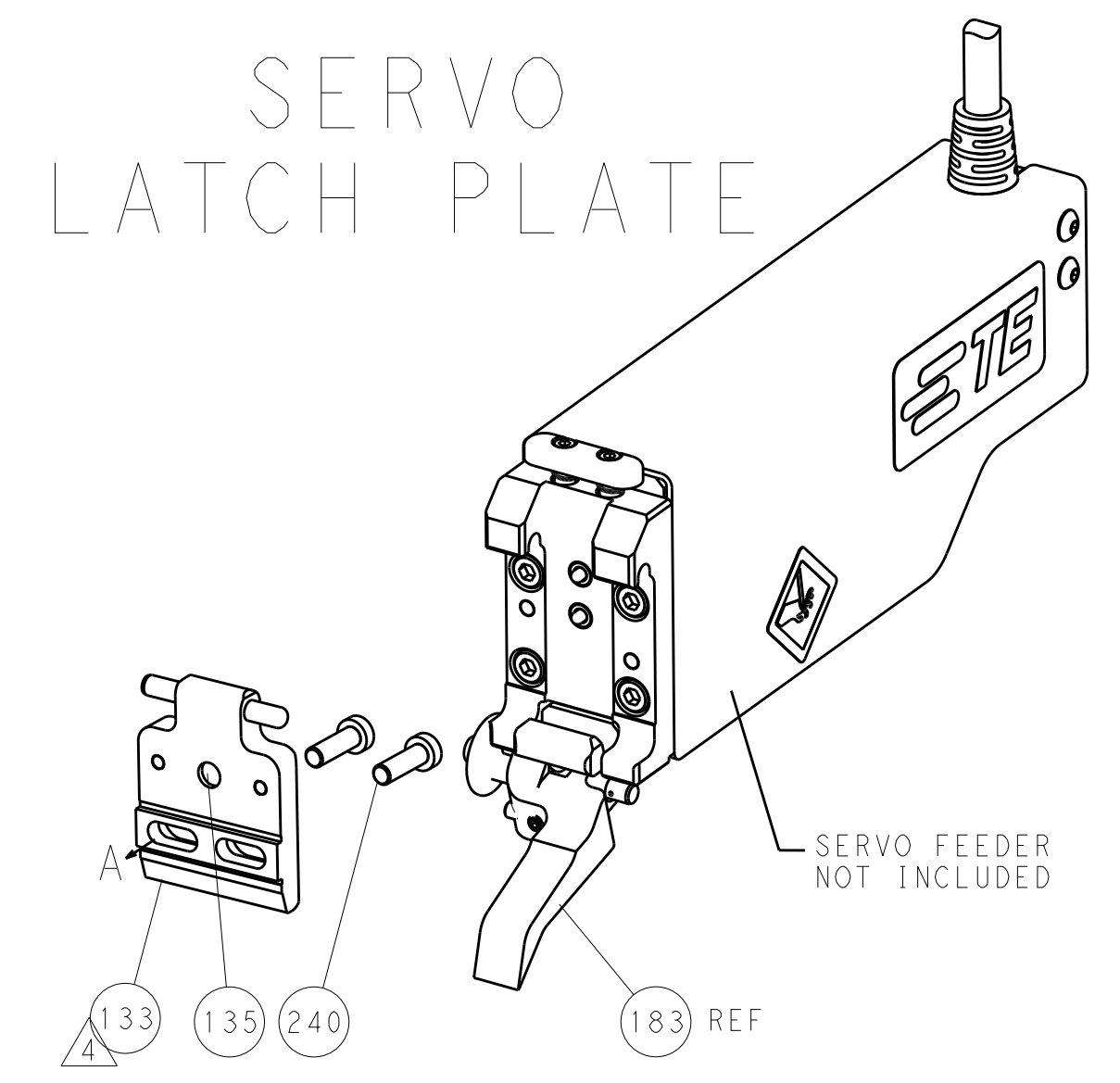
FEED TYPE
MECHANICAL



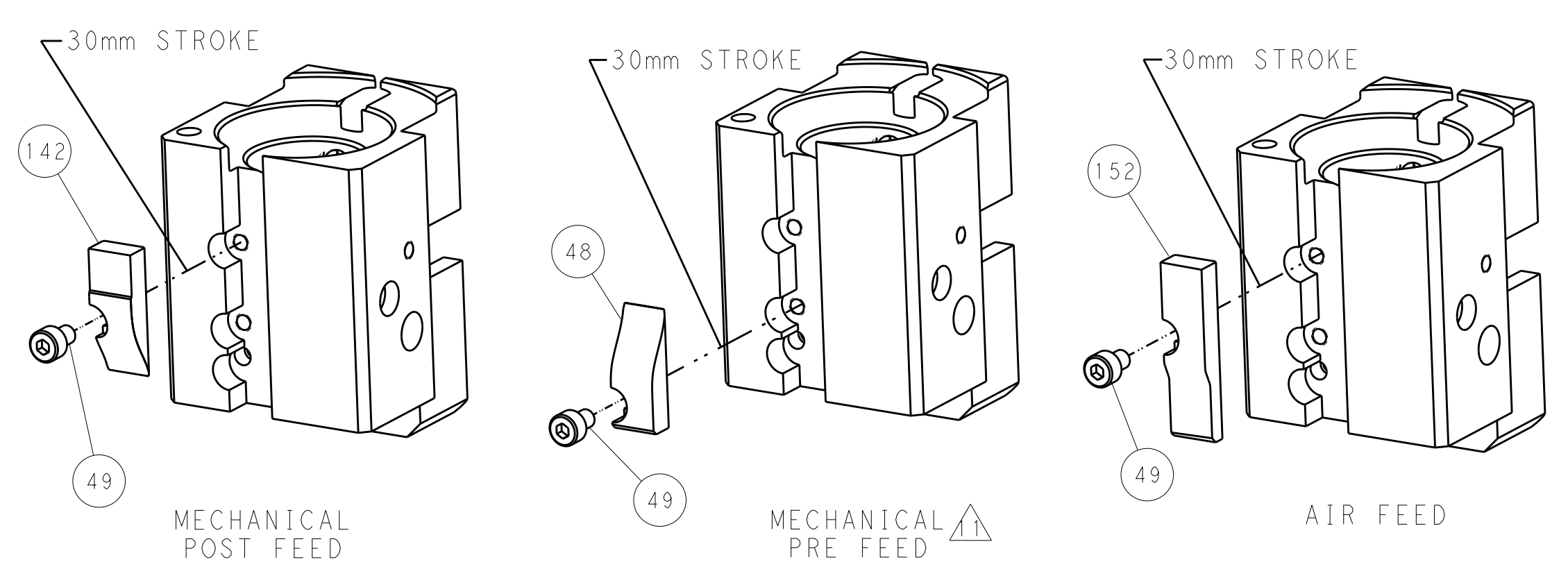
PNEUMATIC



SERVO
LATCH PLATE



CAM POSITIONS



PACIFIC VERSION
Shown on sheets 3 of 4 & 4 of 4
(Atlantic version shown on sheets 1 of 4 & 2 of 4)

DIMENSIONS:		TOLERANCES UNLESS OTHERWISE SPECIFIED:		DWG: L. ZHANG 07FEB2012		CHK: L. ZHANG 07FEB2012		NAME: Ocean End Feed Applicator	
mm	0 PLC	±		PRODUCT SPEC		SIZE	CAGE CODE	DRAWING NO	RESTRICTED TO
	1 PLC	±		APPLICATION SPEC		A1	00779	©=2150081	
	2 PLC	±		WEIGHT		CUSTOMER ACCESSIBLE PRODUCTION DRAWING		SCALE	1:1
	3 PLC	±		ANGLES		SHEET 4 OF 4		REV	B3
	4 PLC	±		FINISH					