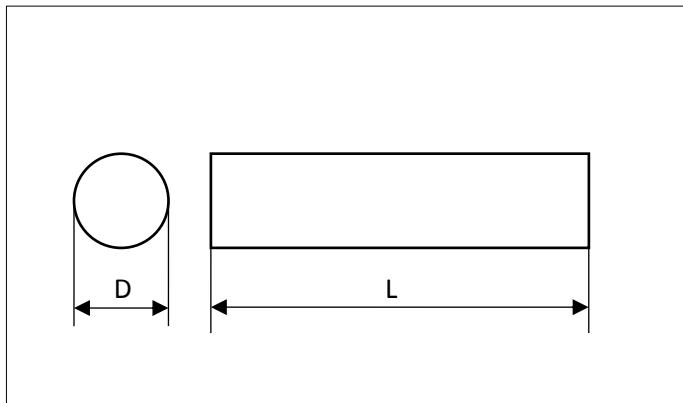


ROD cores



Dimension (mm)				Type number	
D	D tol.	L	L tol.	3C90	4B1
1.5	-0.05	10	-0.8	ROD1.5/10-3C90-D	ROD1.5/10-4B1-D
3	-0.05	15	-0.8	ROD3/15-3C90-D	ROD3/15-4B1-D
4	-0.05	15	-0.8	ROD4/15-3C90-D	ROD4/15-4B1-D
4	-0.05	25	-1.0	ROD4/25-3C90-D	ROD4/25-4B1-D
5	-0.05	20	-0.9	ROD5/20-3C90-D	ROD5/20-4B1-D
5	-0.05	25	-1.0	ROD5/25-3C90-D	ROD5/25-4B1-D
6	-0.30	25	±0.6	ROD6/25-3C90	ROD6/25-4B1
6	-0.10	40	-1.6	ROD6/40-3C90-D	ROD6/40-4B1-D
8	-0.40	25	±0.75	ROD8/25-3C90	ROD8/25-4B1
8	-0.40	50	±1	ROD8/50-3C90	ROD8/50-4B1
10	-0.5	40	±0.8	ROD10/40-3C90	ROD10/40-4B1
10	-0.5	50	±1	ROD10/50-3C90	ROD10/50-4B1
12	±0.35	40	±0.8	ROD12/40-3C90	ROD12/40-4B1
8	-0.40	100	±2	ROD8/100-3C90	ROD8/100-4B1
8	-0.40	150	±3	ROD8/150-3C90	ROD8/150-4B1
8	-0.40	100	±2	ROD10/100-3C90	ROD10/100-4B1
8	-0.40	140	±2.8	ROD10/140-3C90	ROD10/140-4B1
10	-0.50	200	±4	ROD10/200-3C90	ROD10/200-4B1
10	-0.50	245	±4.9	ROD10/245-3C90	ROD10/245-4B1