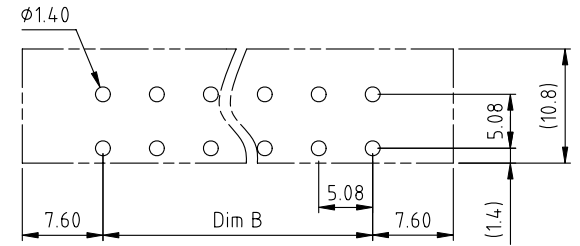
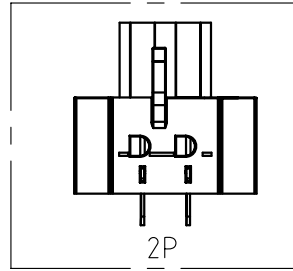
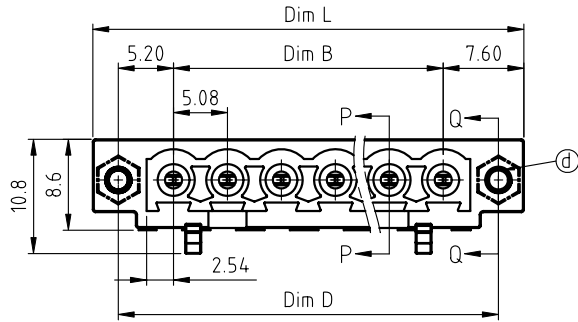
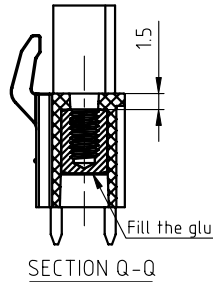
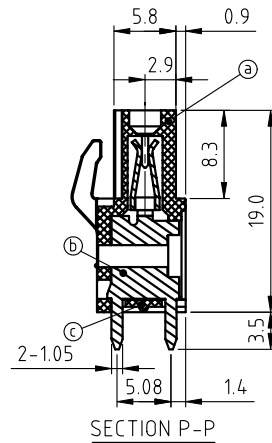
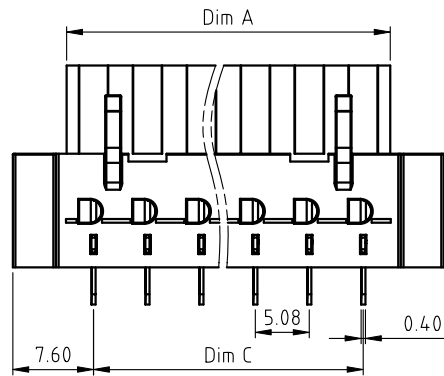


PRODUCT NUMBER	PITCH
V7xx52x000J0G	5.08 mm



RECOMMENDED P.C.B LAYOUT  
TOP VIEW



SECTION Q-Q

Material:

- Item (a) Terminal housing: Thermoplastic (UL94V-0)
- Item (d) Female contact: High conductivity copper, Tin plated
- Item (c) Terminal cover: Thermoplastic (UL94V-0)
- Item (e) Flange Nut: Brass M2.5

Electrical cULus

- Voltage rating: 300VAC
- Current rating: 20A
- Withstanding Voltage: 1.6kv
- Operating temperature: -40°C to +115°C
- Soldering temperature: 260°C±5°C/5 Sec
- Safety Approval:

N=Number of poles  
 Dim L=(N-1)×5.08+15.2  
 Dim A=N×5.08  
 Dim B=(N-1)×5.08  
 Dim C=(N-1)×5.08  
 Dim D=(N-1)×5.08+10.4

poles	Dim L	Dim A	Dim B	Dim C	Dim D
2-6p	±0.15	0	±0.15	±0.15	±0.15
7-12p	±0.20	-0.20	±0.20	±0.20	±0.20
13-18p	±0.30	0	±0.30	±0.30	±0.30
19-24p	±0.40	-0.40	±0.40	±0.40	±0.40

PART NO.: V7 xx 5 2 x 0 00J0 G

Solid block	0	Color	2	Black (RAL9005)	RoHS compliant
No. of poles	2		3	Red (RAL3001/D)	(lead<4%)
02 2poles	3		4	Orange(RAL2011/P)	In copper Alloy
03 3poles	4		5	Yellow(RAL1018/A)	
...	5		6	Green(RAL6018/T)	
24 24poles	6		8	Blue (RAL5015/A)	
	8		9	Grey(RAL7035/D)	
	9		C	White(RAL1102)	
	C			Green(RAL6018/U)	

mat'l. code		surface ASME Y14.5	tolerance ASME Y14.5	projection 	product family TERMINAL BLOCK
ltr	ecn no	dr	date	tolerances unless otherwise specified	title TERMINAL BLOCK
				angles X±0.5	PLUGGABLE PCB PLUG, WITH FLANGE, VERTICAL
				MM	scale
				X±1°	scale
		dr	EVIN ZHONG	043014	sheet 1 of 1 size
		enr	EVIN ZHONG	043014	dwg no
		chr	HANKE FENG	043014	V7xx52x000J0G
		appd	SHI JUN	043014	A4
sheet index	revision sheet	A	1		type CUSTOMER Drawing