

Technical specification:

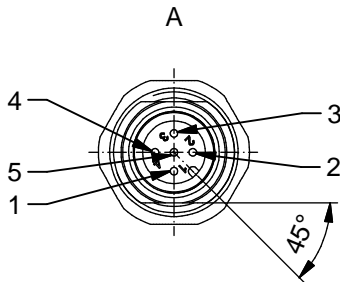
Rated voltage:	60 V
IEC 61076-2-101	
Current rating:	4 A at 40°C
IEC 61076-2-101	
Insulation resistance:	>=100 MΩ
IEC 60512	
Pollution degree:	3/2
IEC 60664-1	
Degree of protection:	IP 67, in mated condition
IEC 60529	
Temperature range:	-30°C ... +80°C
IEC 60664-1	
Mating cycles:	>=100
IEC 60512-9a	

Materials:

Contact:	CuZn
Contact plating:	Nickel, gold plated
Contact carrier:	PBT GF, UL 94
Sealing:	FPM
Counternut:	CuZn, nickel plated
Socket housing:	CuZn, nickel plated

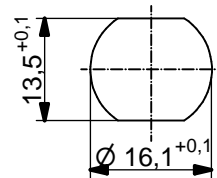
Installation specification:

Recommended torque:	1-1,2 Nm
Conec installation tool:	Torque wrench: 36-000200 Insert across flats 19: 36-000250

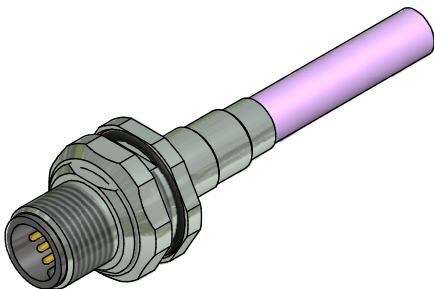


Contact assignment:

1	shielding
2	red (+)
3	black(-)
4	white (CAN H)
5	blue (CAN L)



Minimum wall thickness 1,5mm, alternativ panel cut-out d=16,1



D see data sheet cable

Part no:	Description:	Length L:	Cable:
43-01645	SAL - DN - 12 - FSH5.3 - 0,5 / GJ	0,5m	TPU, UL, violett, 2xAWG22 + 2xAWG24, flexible installation Cable: 781-GJ0400
43-01646	SAL - DN - 12 - FSH5.3 - 1 / GJ	1m	
43-01647	SAL - DN - 12 - FSH5.3 - 2 / GJ	2m	
43-xxxxx	SAL - DN - 12 - FSH5.3 - ... / GJ	x	

DO NOT ALTER CAD DRAWING BY HAND	Directive 2002/95/EC RoHS compliant	dim. in mm		title: Male socket M12x1 with cable, backmounting, device-net dwg no: <div style="text-align: center; font-size: 1.2em; font-weight: bold;">43K1A1182</div> part no:	
		tolerance of cable: L ≤ 4m: L + 40mm L > 4m: L + 1%			
		drawn	date		name
		appd.	23.09.10		W.Schmidt
THIS DRAWING MAY NOT BE COPIED OR REPRODUCED IN ANY WAY, AND MAY NOT BE PASSED ON TO A THIRD PARTY WITHOUT WRITTEN PERMISSION. OWNERSHIP AND COPYRIGHT OF CONEC GmbH					