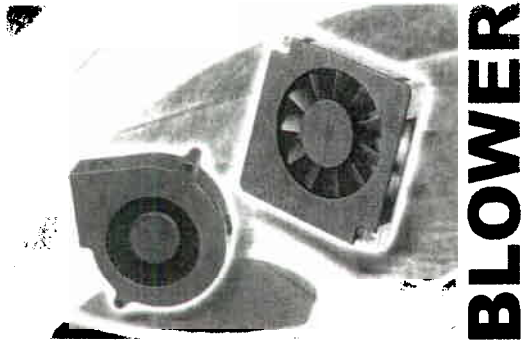
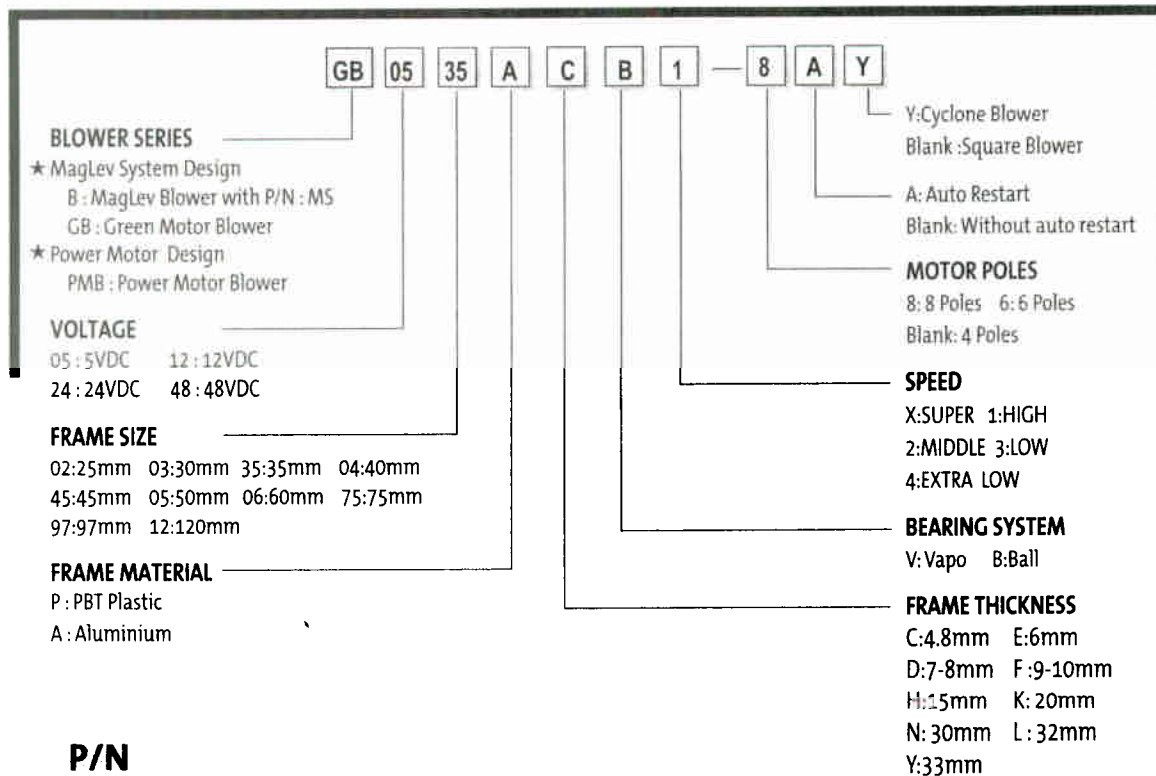


# Model Numbering System



“ Invent  
& Innovate ,,



## P/N

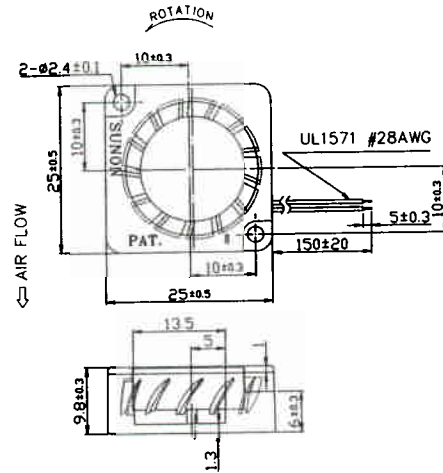
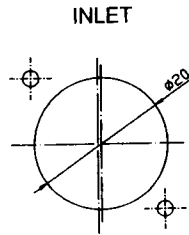
P/N suffixes have the following significance  
Example: B0503AFB1-8 P/N:MS

- MS : MagLev System Design  
(GB series MagLev Design inside)
- V1 : New Blade
- (2) : Two ball bearing
- F : 3rd wire with frequency generation waveform
- R : 3rd wire with rotation detector waveform
- P : for Projector
- BXX : Special circuit design
- CXX : Different dimensions, particular process or supplementary component parts

# 25X25X10 mm

Bearing Type : Vapo / Ball bearing

Air Flow: 0.45-1.0 CFM



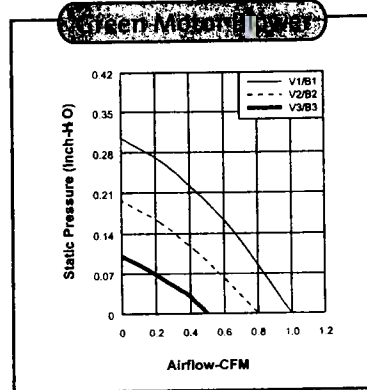
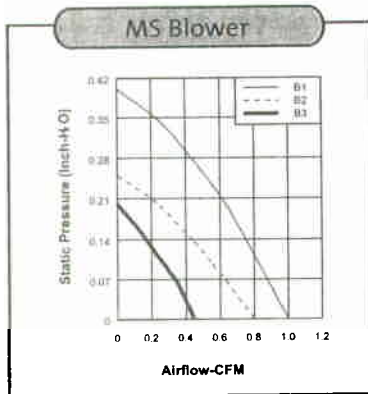
## MS Blower

Model	P/N	Bearing	Rating Voltage (VDC)	Power Current (AMP)	Power Consumption (WATTS)	Speed (RPM)	Air Flow (CFM)	Static Pressure (Inch-HzO)	Noise (dBA)	Weight (g)
B0502PFB1-8	MS	○ BALL	5	0.18	0.9	14000	1.0	0.40	37	6
B0502PFR2-8	MS	○ BALL	5	0.12	0.6	10000	0.8	0.25	30	6
B0502PFB3-8	MS	○ BALL	5	0.06	0.3	7000	0.45	0.20	19	6
B0502AFB1-8	MS	○ BALL	5	0.18	0.9	14000	1.0	0.40	37	9
B0502AFB2-8	MS	○ BALL	5	0.12	0.6	10000	0.8	0.25	30	9
B0502AFB3-8	MS	○ BALL	5	0.06	0.3	7000	0.45	0.20	19	9

## Green Motor Blower

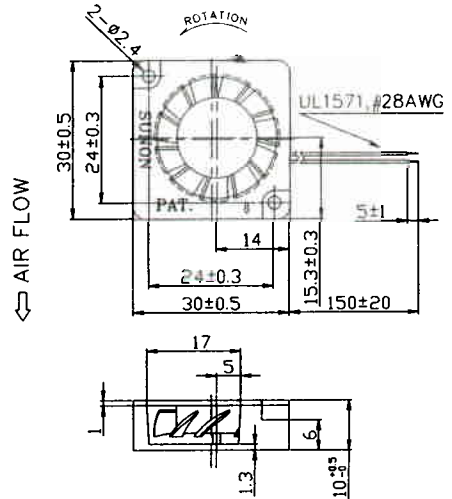
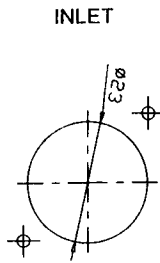
Model	P/N	Bearing	Rating Voltage (VDC)	Power Current (AMP)	Power Consumption (WATTS)	Speed (RPM)	Air Flow (CFM)	Static Pressure (Inch-HzO)	Noise (dBA)	Weight (g)
GB0502AFV1-8		● VAPO	5	0.14	0.7	12000	1.0	0.30	32	9
GB0502AFV2-8		● VAPO	5	0.08	0.4	10000	0.8	0.20	26	9
GB0502AFV3-8		● VAPO	5	0.04	0.2	7000	0.5	0.10	18	9
GB0502AFB1-8		○ BALL	5	0.14	0.7	12000	1.0	0.30	33	9
GB0502AFB2-8		○ BALL	5	0.07	0.35	10000	0.8	0.20	27	9
GB0502AFB3-8		○ BALL	5	0.04	0.2	7000	0.5	0.10	19	9

Specifications subject to change without notice



# 30X30X10 mm

Bearing Type : Vapo / Ball bearing  
 Air Flow: 0.55-1.3 CFM



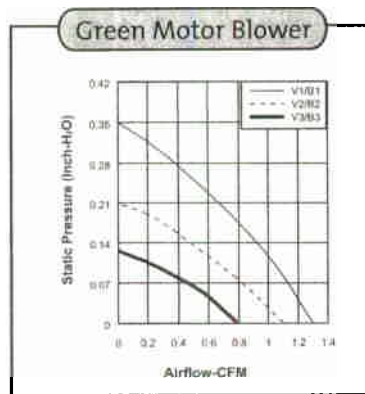
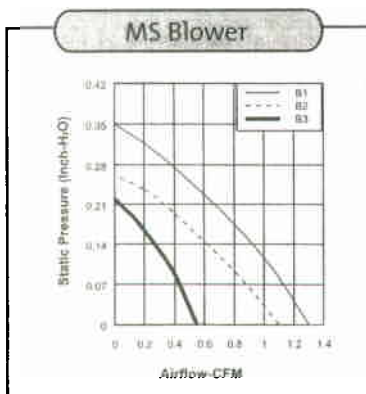
## MS Blower

Model	P/N	Bearing	Rating Voltage (VDC)	Power Current (AMP)	Power Consumption (WATTS)	Speed (RPM)	Air Flow (CFM)	Static Pressure (Inch-H <sub>2</sub> O)	Noise (dBA)	Weight (g)
B0503PFB1-8	MS	○ BALL	5	0.19	0.95	10000	1.3	0.35	36	9
B0503PFB2-8	MS	○ BALL	5	0.13	0.65	8000	1.1	0.26	30	9
B0503PFB3-8	MS	○ BALL	5	0.07	0.35	5500	0.55	0.22	17	9
B0503AFB1-8	MS	○ BALL	5	0.19	0.95	10000	1.3	0.35	36	10.5
B0503AFB2-8	MS	○ BALL	5	0.13	0.65	8000	1.1	0.26	30	10.5
B0503AFB3-8	MS	○ BALL	5	0.07	0.35	5500	0.55	0.22	17	10.5

## Green Motor Blower

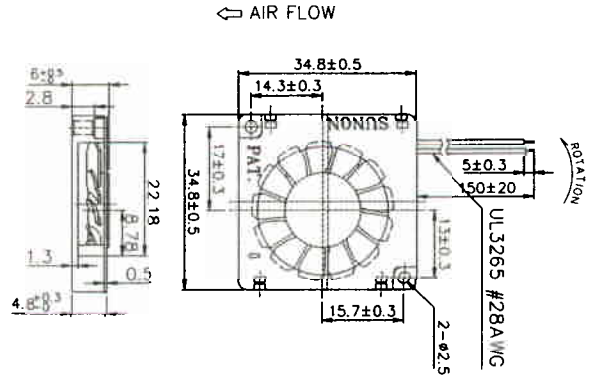
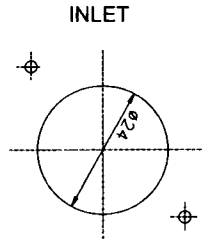
Model	P/N	Bearing	Rating Voltage (VDC)	Power Current (AMP)	Power Consumption (WATTS)	Speed (RPM)	Air Flow (CFM)	Static Pressure (Inch-H <sub>2</sub> O)	Noise (dBA)	Weight (g)
GB0503AFV1-8		○ BALL	5	0.15	0.8	10000	1.3	0.35	31	10.5
GB0503AFV2-8		○ BALL	5	0.08	0.4	8000	1.1	0.21	24	10.5
GB0503AFV3-8		○ BALL	5	0.04	0.2	6000	0.8	0.12	14	10.5
GB0503AFB1-8		○ BALL	5	0.15	0.8	10000	1.3	0.35	32	10.5
GB0503AFB2-8		○ BALL	5	0.08	0.4	8000	1.1	0.21	25	10.5
GB0503AFB3-8		○ BALL	5	0.04	0.2	6000	0.8	0.12	15	10.5

Specifications subject to change without notice



# 35x35x4.8 mm

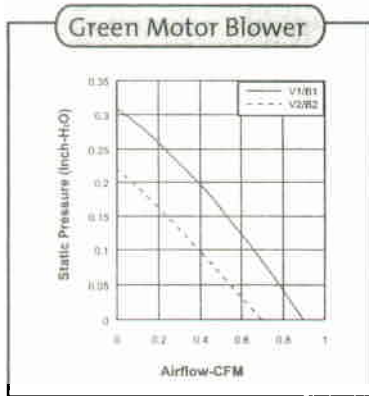
Bearing Type : Vapo / Ball bearing  
 Air Flow:0.7-0.9 CFM



## Green Motor Blower

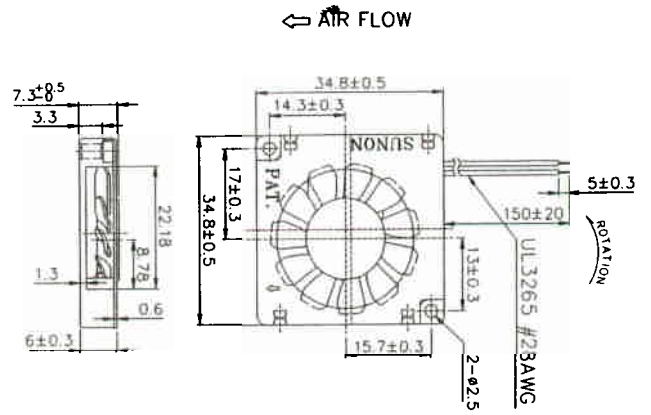
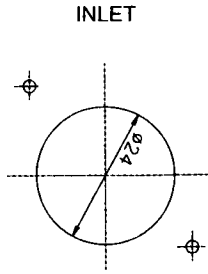
Model	P/N	Bearing	Rating Voltage (VDC)	Power Current (AMP)	Power Consumption (WATTS)	Speed (RPM)	Air Flow (CFM)	Static Pressure (Inch-H <sub>2</sub> O)	Noise (dBA)	Weight (g)
GB0535ACV1-8		● VAPO	5	0.16	0.8	9500	0.9	0.31	30	10
GB0535ACV2-8		● BALL	5	0.07	0.35	7500	0.7	0.22	25	10
GB0535ACB1-8		○ 2BALL	5	0.16	0.8	9500	0.9	0.31	31	10
GB0535ACB2-8		○	5	0.17	0.35	7500	0.7	0.22	26	10

Specifications subject to change without notice



# 35x35x6 mm

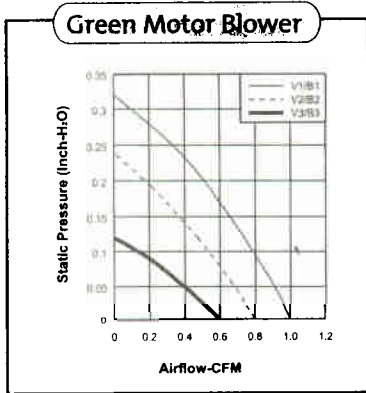
Bearing Type :Vapo / Ball bearing  
Air Flow:0.6-1.0 CFM



## Green Motor Blower

Model	P/N	Bearing	Rating Voltage (VDC)	Power Current (AMP)	Power Consumption (WATTS)	Speed (RPM)	Air Flow (CFM)	Static Pressure (Inch-HzO)	Noise (dBA)	Weight (g)
GB0535AEV1-8		● VAPD	5	0.12	0.6	8500	1.0	0.32	30	11
GB0535AEV2-8		● BALL	5	0.08	0.4	7000	0.8	0.24	25	11
GB0535AEV3-8		● 2BALL	5	0.05	0.25	5500	0.6	0.12	19.5	11
GB0535AEB1-8		○	5	0.12	0.6	8500	1.0	0.32	31	11
GB0535AEB2-8		○	5	0.08	0.4	7000	0.8	0.24	26	11
GB0535AEB3-8		○	5	0.05	0.25	5500	0.6	0.12	20	11

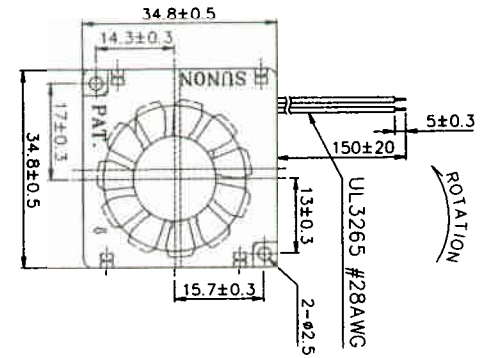
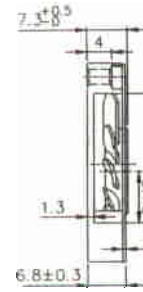
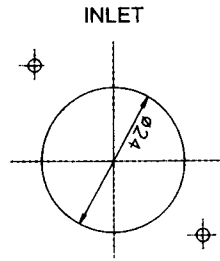
Specifications subject to change without notice



35x35x7 mm

Bearing Type :Vapo / Ball bearing  
 Air Flow:0.8-1.2 CFM

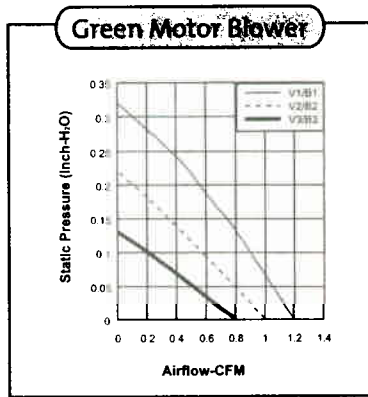
← AIR FLOW



### Green Motor Blower

Model	P/N	Bearing	Rating Voltage (VDC)	Power Current (AMP)	Power Consumption (WATTS)	Speed (RPM)	Air Flow (CFM)	Static Pressure (Inch-H <sub>2</sub> O)	Noise (dBA)	Weight (g)
GB0535ADV1-8		● VAPD	5	0.12	0.6	8000	1.2	0.32	30	12
GB0535ADV2-8		● BALL	5	0.08	0.4	6500	1.0	0.22	24.5	12
GB0535ADV3-8		● 2BALL	5	0.05	0.25	5000	0.8	0.13	19.5	12
GB0535ADB1-8		○	5	0.12	0.6	8000	1.2	0.32	31	12
GB0535ADB2-8		○	5	0.08	0.4	6500	1.0	0.22	25	12
GB0535ADB3-8		○	5	0.05	0.25	5000	0.8	0.13	20	12

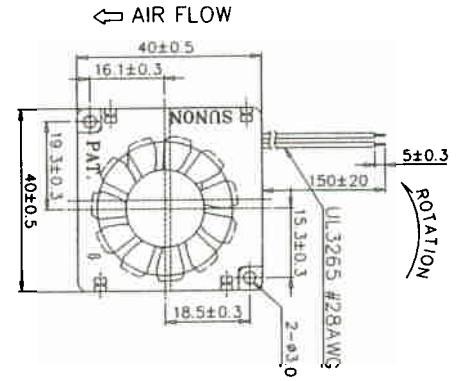
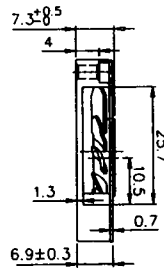
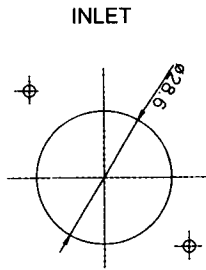
Specifications subject to change without notice



**40x40x7 mm**

Bearing Type :Vapo / Ball bearing

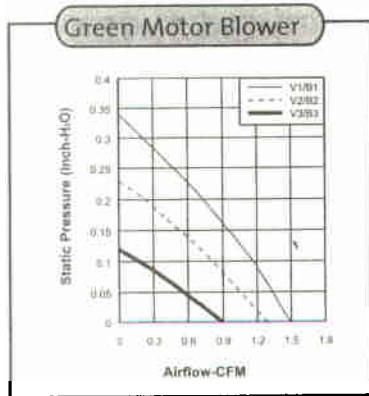
Air Flow: 0.9-1.5 CFM



**Green Motor Blower**

Model	P/N	Bearing	Rating Voltage (VDC)	Power Current (AMP)	Power Consumption (WATTS)	Speed (RPM)	Air Flow (CFM)	Static Pressure (Inch-H <sub>2</sub> O)	Noise (dBA)	Weight (g)
GB0504ADV1-8		● VAP0	5	0.09	0.45	7500	1.5	0.34	33	15
GB0504ADV2-8		● BALL	5	0.05	0.25	6000	1.3	0.23	25.5	15
GB0504ADV3-8		● 2BALL	5	0.03	0.15	4500	0.9	0.12	19.5	15
GB0504ADB1-8		○	5	0.09	0.45	7500	1.5	0.34	34	15
GB0504ADB2-8		○	5	0.05	0.25	6000	1.3	0.23	26	15
GB0504ADB3-8		○	5	0.03	0.15	4500	0.9	0.12	20	15

Specifications subject to change without notice



# Safety & Patent

“ Invent  
& Innovate ,,

## Safety



## Certification



## U.S. Patent Numbers

396,276	5,522,700	6,097,120	6,310,415	6,462,443
398,392	5,582,506	6,109,890	6,336,745	6,465,921
398,393	5,584,339	6,109,892	6,362,551	6,481,974
398,977	5,666,011	6,114,785	6,382,606	6,483,209
398,978	5,690,468	6,132,170	6,384,505	6,488,412
399,946	5,699,854	6,163,267	6,385,395	6,497,273
400,665	5,734,553	6,179,561	6,386,785	6,498,412
401,686	5,740,017	6,210,101	6,386,837	6,512,319
408,514	5,873,406	6,238,185	6,396,231	6,512,320
418,216	5,923,110	6,246,140	6,400,053	6,515,447
461,238	5,959,377	6,250,809	6,407,473	6,534,893
4,787,863	5,967,763	6,265,797	6,407,525	6,538,355
4,987,331	5,988,995	6,278,248	6,414,411	6,538,357
5,093,599	5,997,183	6,280,089	6,435,722	6,547,540
5,245,236	6,021,043	6,282,091	6,441,531	6,550,529
5,297,929	6,040,649	6,285,108	6,448,675	
5,492,458	6,050,785	6,290,471	6,462,441	